

Lebanon Fire Risk Bulletin



CIVIL DEDEFENCE

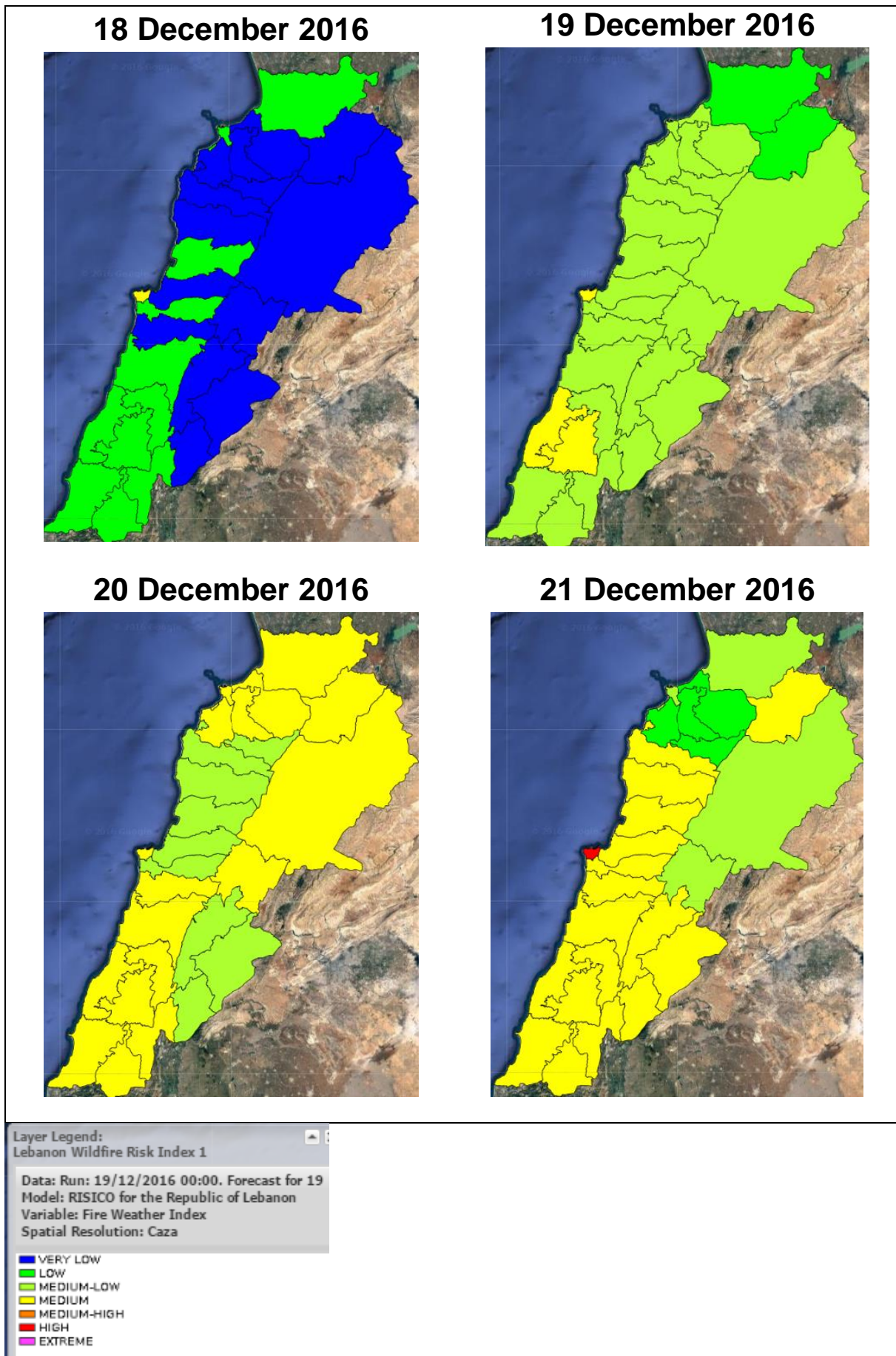
Refer to cadast condition.

General description of potential fire risk situation

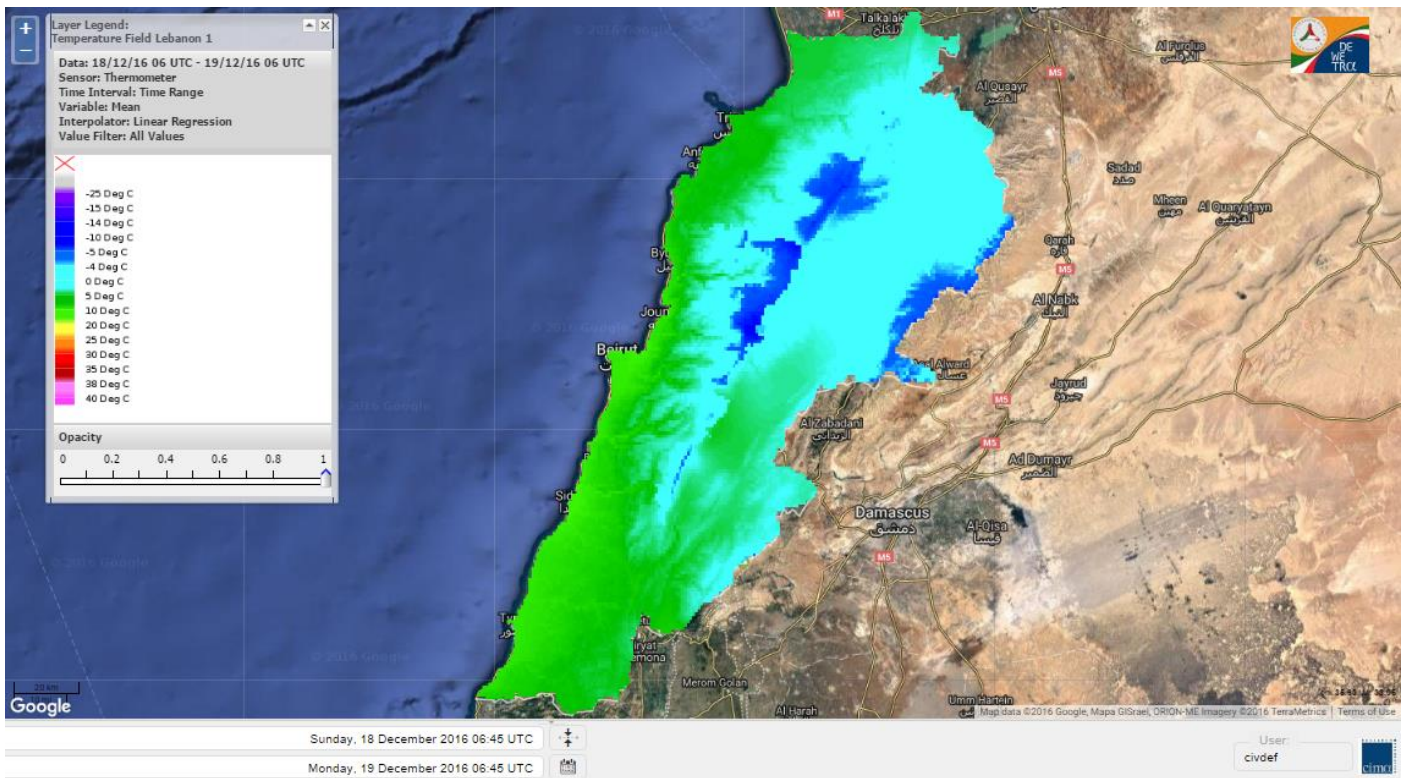
Symbol	Level of risk	Meaning and actions
VL	Very low	Very low fire risk. Controlled burning operations can be hardly executed due to high fuel moisture content. Normally wildfires self-extinguish.
L	Low	Low fire risk. Controlled burning operations can be executed with a reasonable degree of safety.
ML	Medium low	Medium-low fire risk. Controlled burning operations can be executed in safety conditions. All the fires need to be extinguished.
M	Medium	Medium fire risk. Controlled burning operations would be avoided. All the fires need to be very well extinguished.
M	Medium high	Controlled burning is not recommended. Open flame will start fires. Cured grasslands and forest litter will burn readily. Spread is moderate in forests and fast in exposed areas. Patrolling and monitoring is suggested. Fight fires with direct attack and all available resources.
H	High	Ignition can occur easily with fast spread in grass, shrubs and forests. Fires will be very hot with crowning and short to medium spotting. Direct attack on the head may not be possible requiring indirect methods on flanks. Patrolling and monitoring the territory is highly suggested.
E	Extreme	Ignition can occur also from sparks. Fires will be extremely hot with fast rate of spread. Control may not be possible during day due to long range spotting and crowning. Suppression forces should limit efforts to limiting lateral spread. Damage potential total. Patrolling and monitoring the territory is highly suggested.

Beirut, 19 December 2016

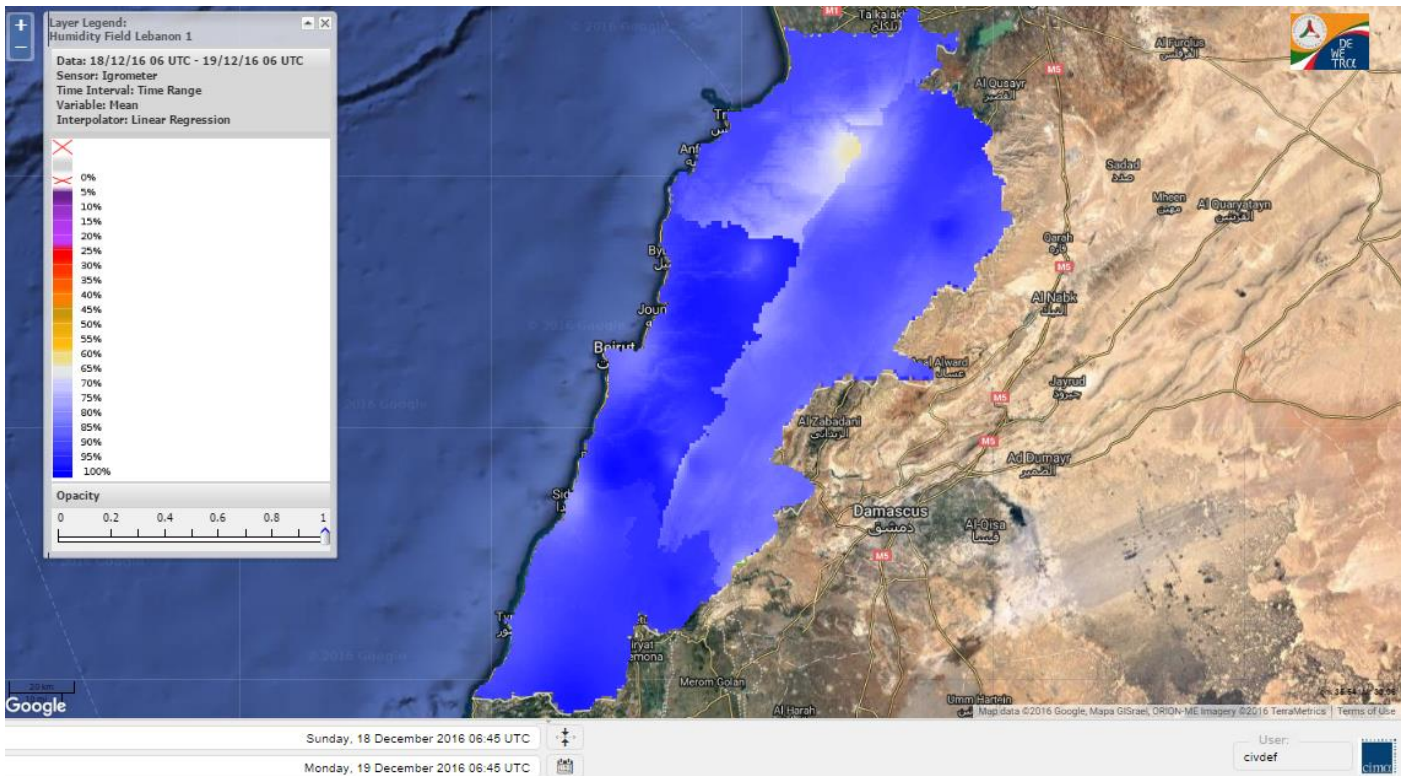
FIRE RISK INDEX



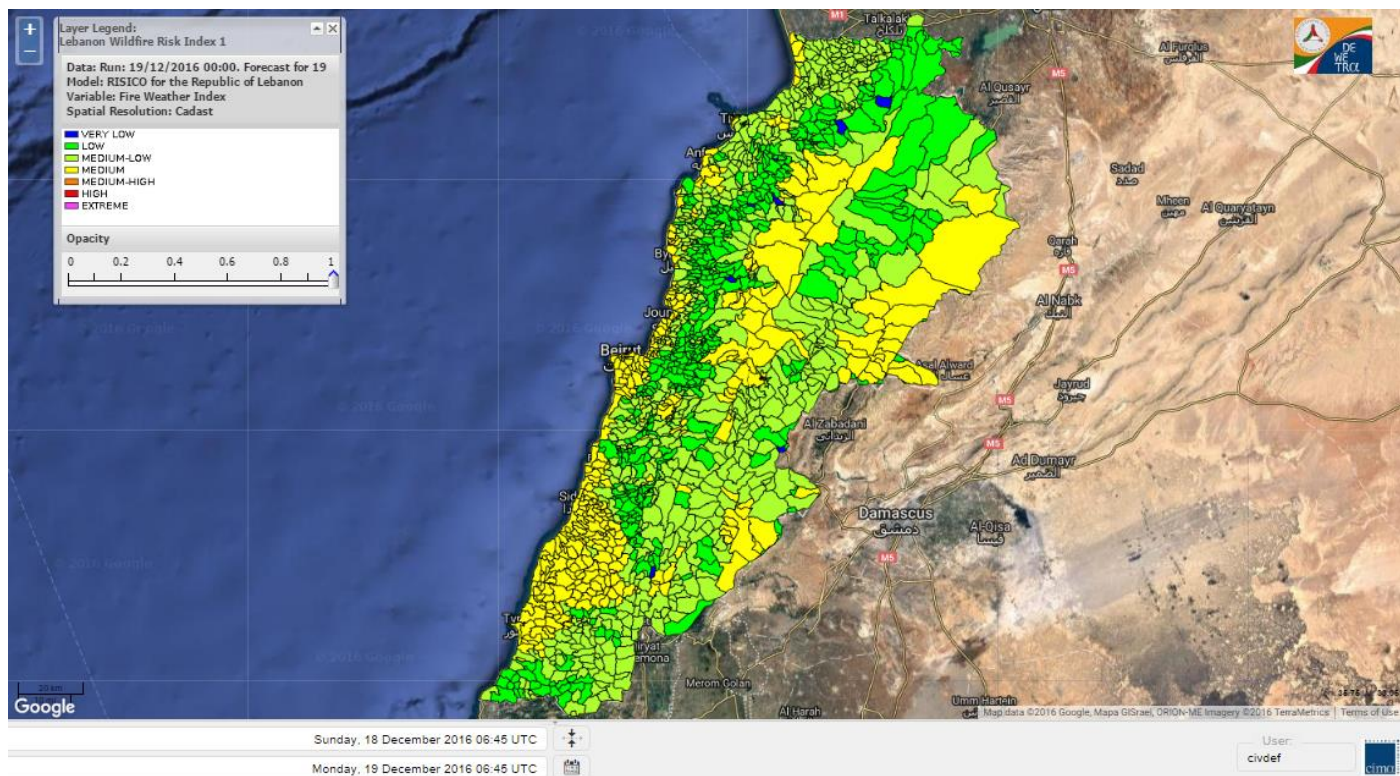
Lebanon temperature for 19 December 2016



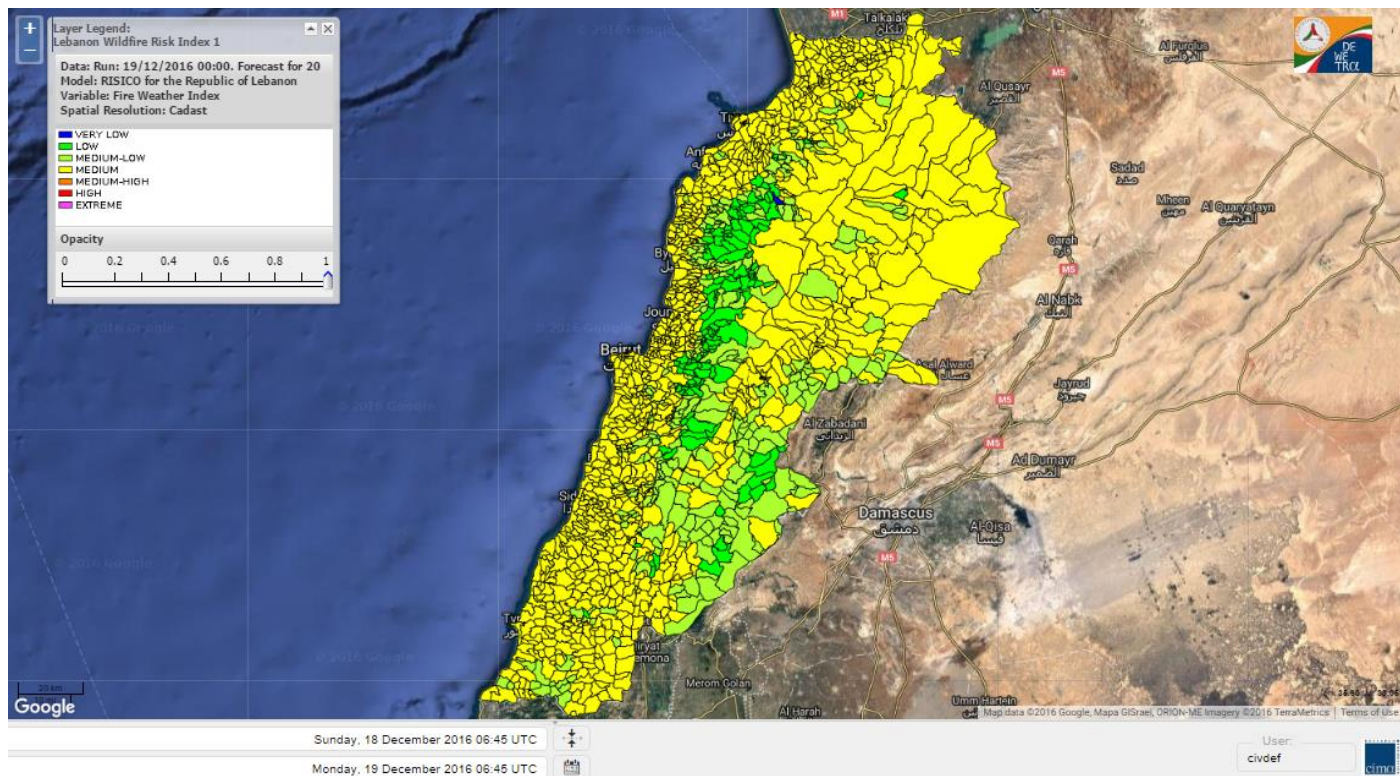
Lebanon humidity for 19 December 2016



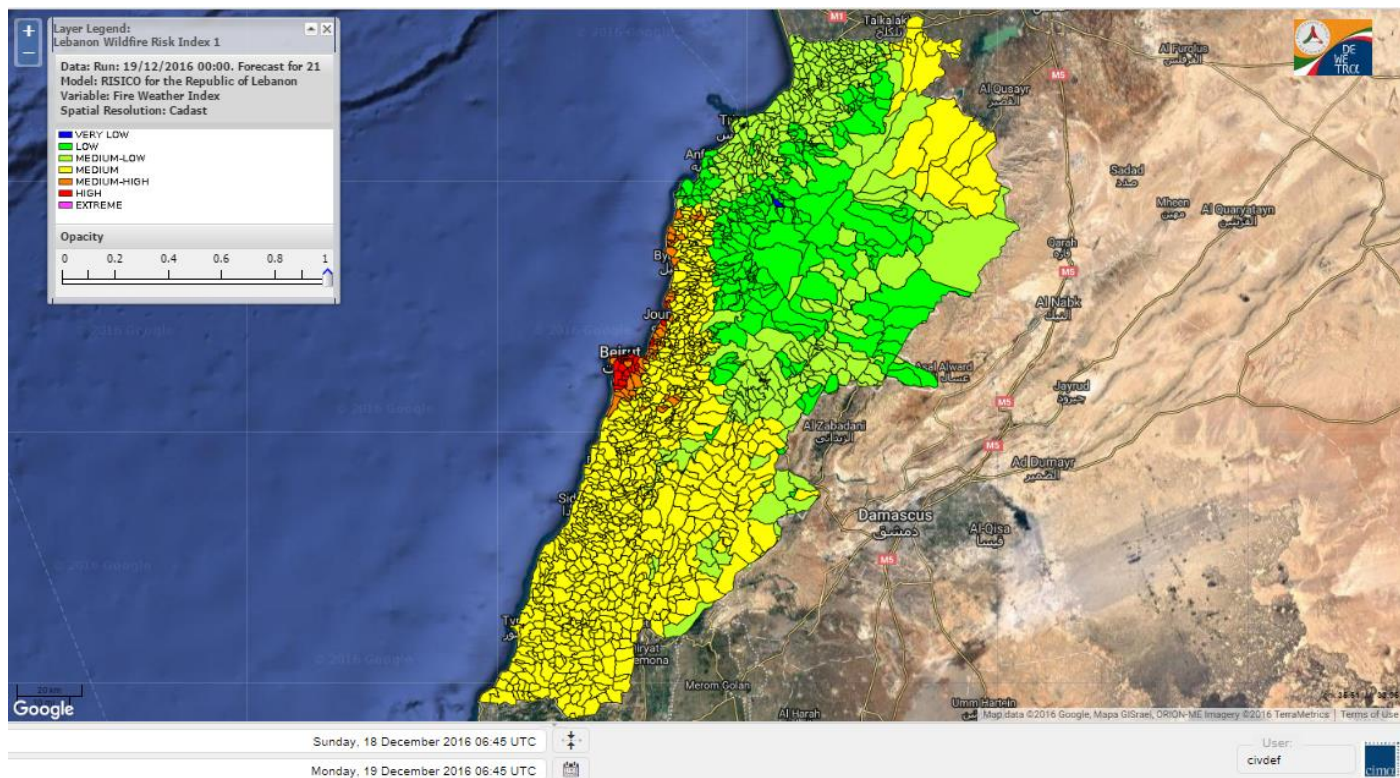
Lebanon for 19 December 2016



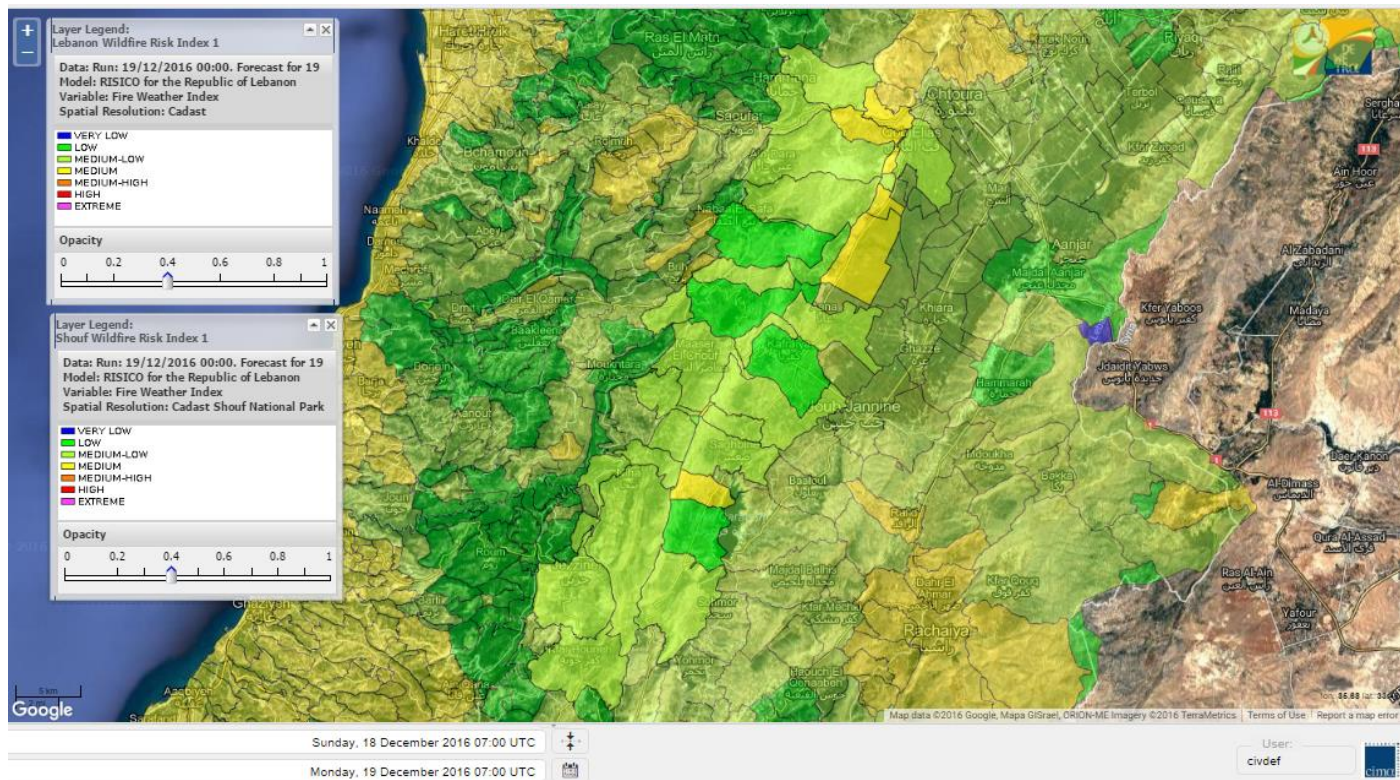
Lebanon for 20 December 2016



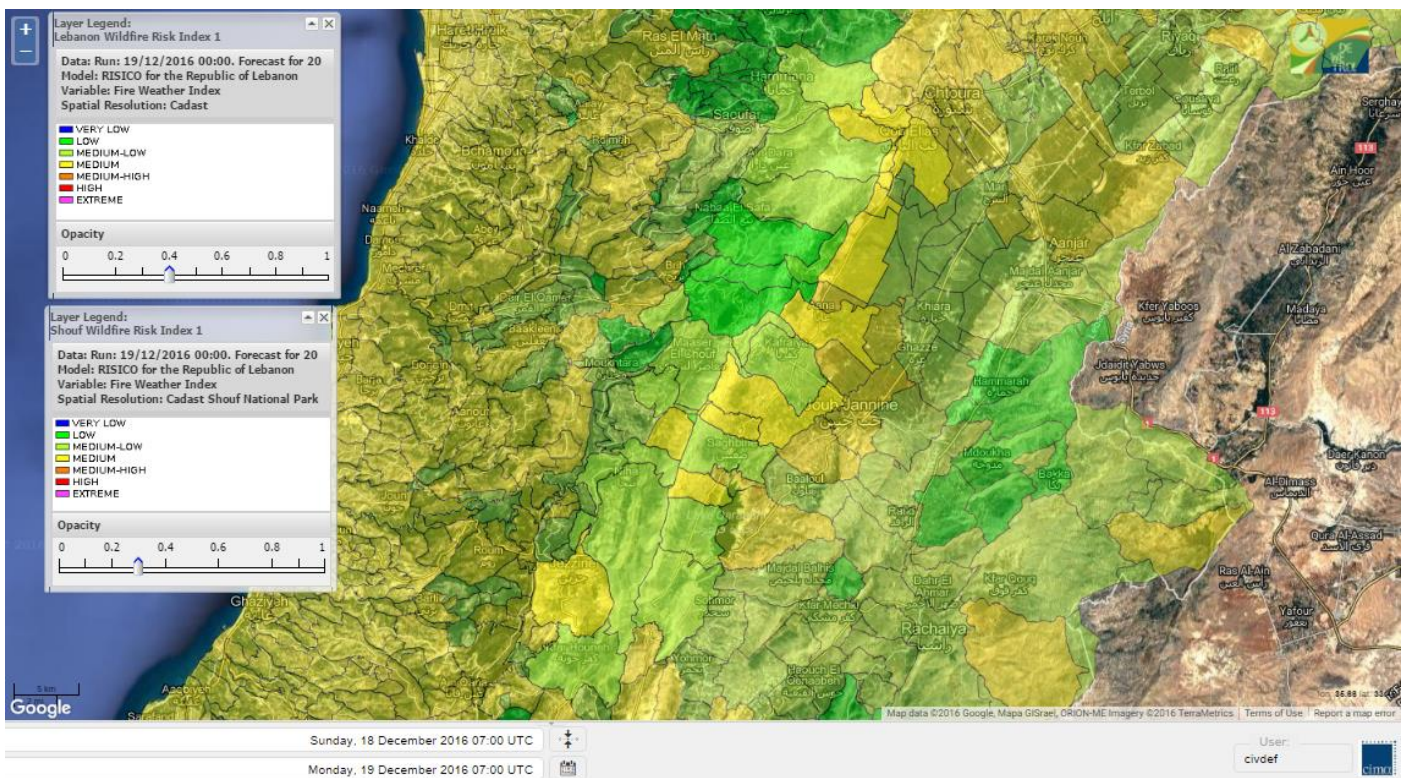
Lebanon for 21 December 2016



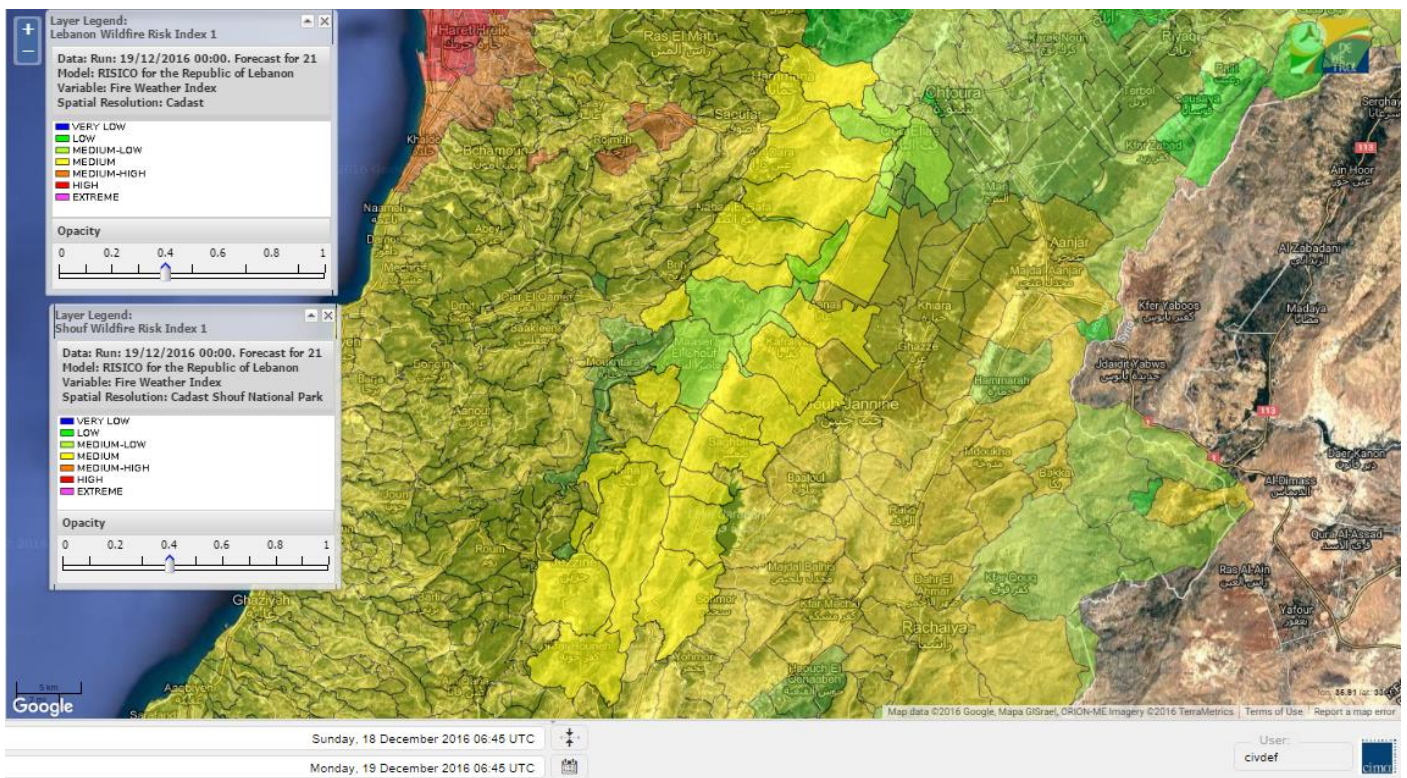
Shouf Biosphere Reserve Forecast for 19 December 2016



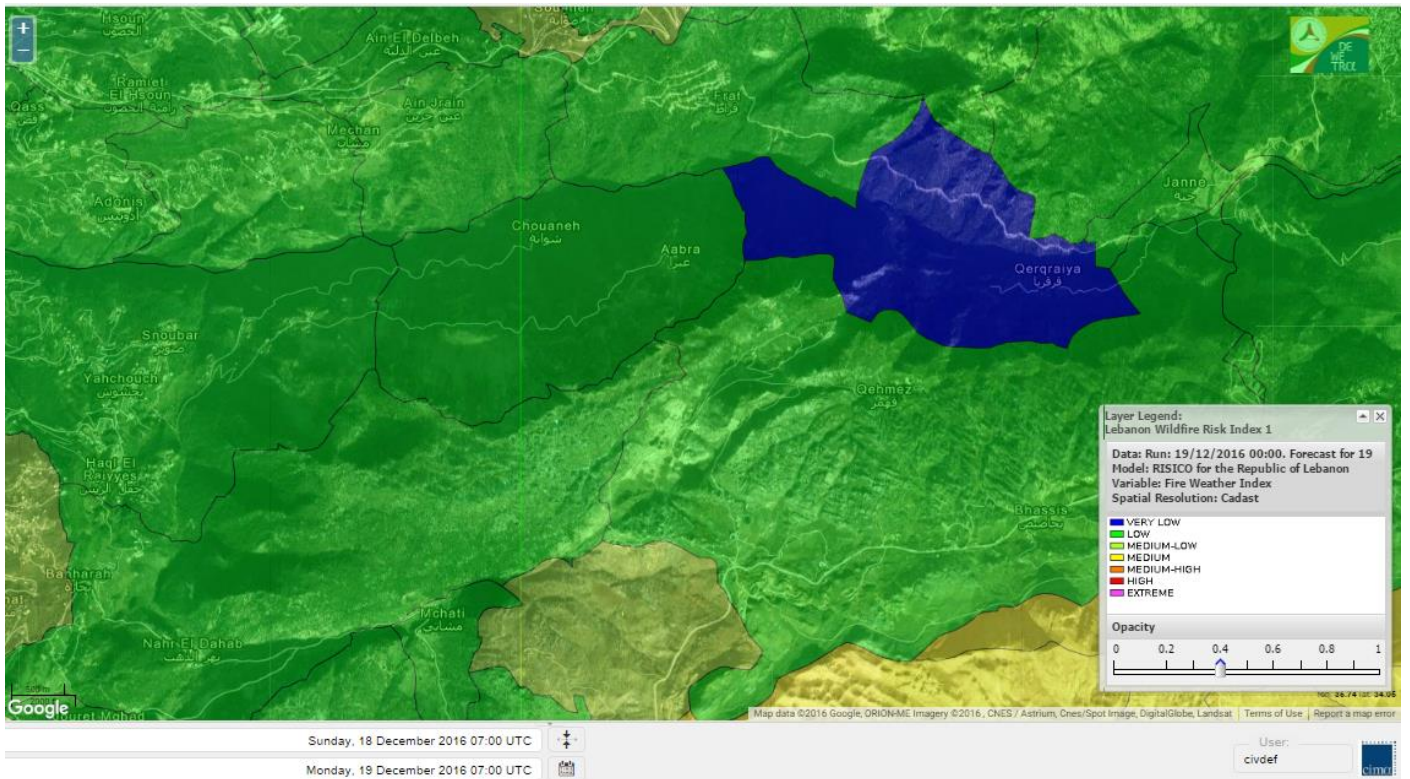
Shouf Biosphere Reserve Forecast for 20 December 2016



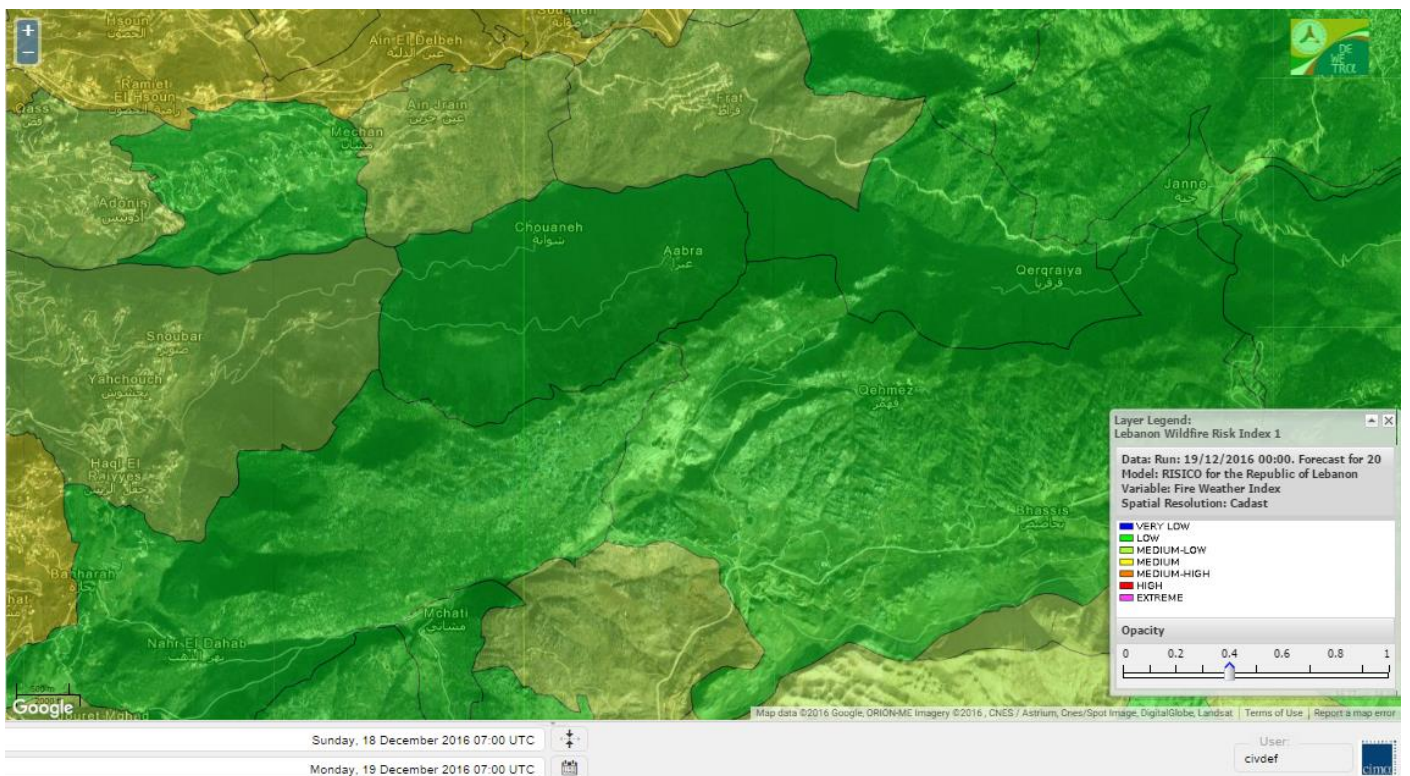
Shouf Biosphere Reserve Forecast for 21 December 2016



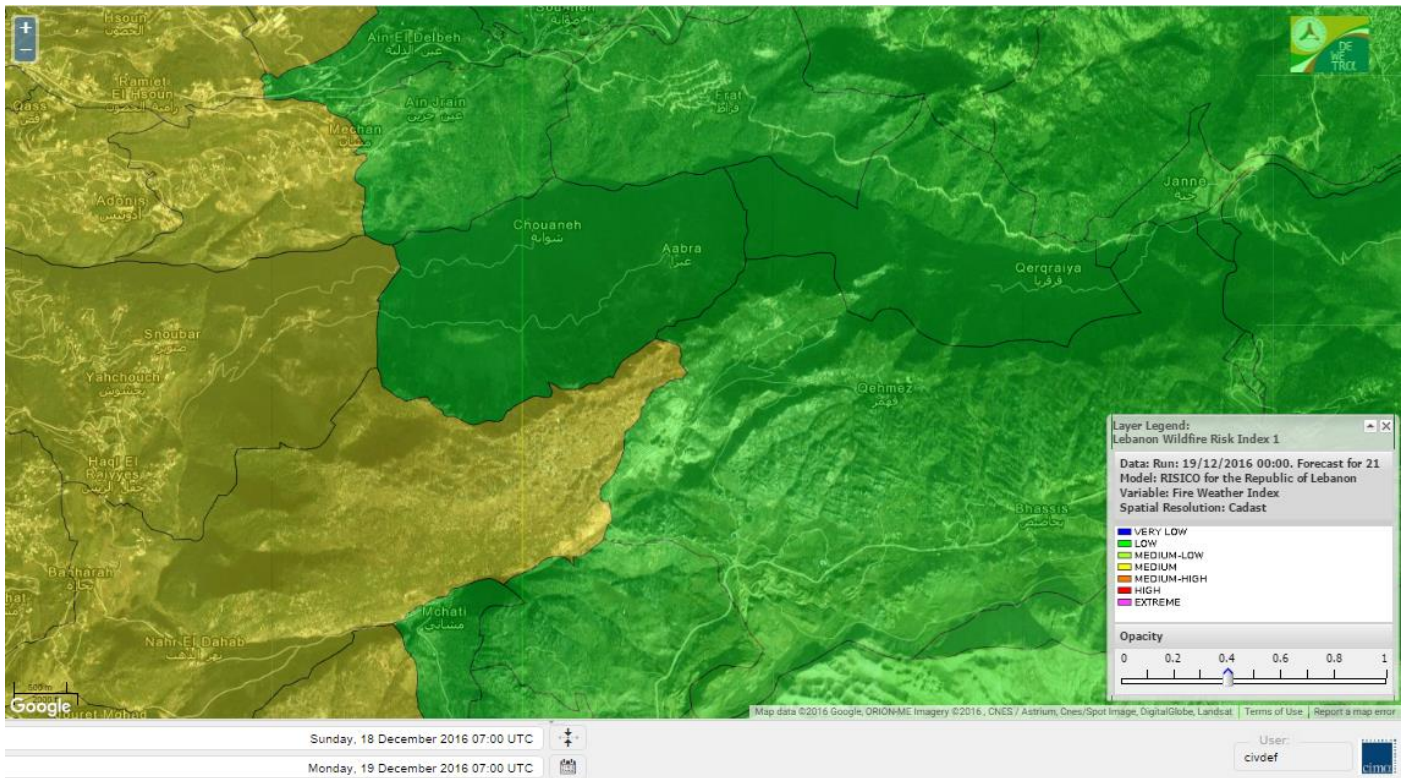
Jabal Moussa Reserve Forecast for 19 December 2016



Jabal Moussa Reserve Forecast for 20 December 2016



Jabal Moussa Reserve Forecast for 21 December 2016



Nord

Koura

Municipality	19-Dec	20-Dec	21-Dec	Municipality	19-Dec	20-Dec	21-Dec	Municipality	19-Dec	20-Dec	21-Dec
Aaba	ML	M	ML	Afsaddiq	M	M	ML	Ain Ekriane	ML	M	ML
Amioun	ML	M	ML	Anfeh	M	M	L	Badbhoun	M	M	ML
Barghoun	ML	M	L	Barsa	ML	M	ML	Batroumine	ML	M	ML
Bdebba	ML	M	ML	Bechmizine	ML	M	ML	Bednaye El-Koura	ML	M	L
Bhabbouch El-Koura	ML	M	ML	Bkeftine	ML	M	ML	Bnehran	L	ML	L
Bqaiia El-Koura	ML	M	ML	Bsarma	ML	M	ML	Btaaboura	ML	M	ML
Bterram	ML	M	ML	Btouratij	ML	M	ML	Bziza	ML	M	ML
Dar Beechtar	ML	M	ML	Dar Chmezzine	M	M	ML	Deddeh	ML	M	ML
Deir El-Balamand	L	ML	ML	Fih	ML	M	ML	Hraiche	M	M	L
Ijdaabrine	ML	M	L	Kaftoun	ML	M	ML	Kefraya El-Koura	M	M	L
Kfarakka	L	M	ML	Kfarhata	ML	M	L	Kfarhazir	M	M	L
Kfarkahel	ML	M	ML	Kfarsaroun	ML	M	ML	Kosba	ML	M	ML
Mejdel el-Koura	ML	ML	L	Nakhle	ML	M	ML	Qalhat	L	ML	ML
Ras Masqa	ML	M	ML	Rechdibbine	ML	M	ML	Zakroun	ML	M	L
Zgharta El-Mtaouile	L	L	L								

Bcharre

Municipality	19-Dec	20-Dec	21-Dec	Municipality	19-Dec	20-Dec	21-Dec	Municipality	19-Dec	20-Dec	21-Dec
Aabdine	L	ML	L	Bane	M	M	L	Barhelioun	L	L	L
Bazouone	ML	ML	L	Becharre	M	M	L	Beit Menzer	L	L	L
Billa	L	L	L	Blaouza	M	M	L	Bqaa Kafra	M	M	L
Bqerqacha	ML	ML	L	Breissat	ML	ML	L	Dimane	ML	ML	L
Hadath El Jobbeh	ML	L	L	Hadchit	ML	ML	L	Hasroun	ML	ML	L
Mazraat Aassaf	VL	L	L	Mazraat Bani Saab	L	ML	L	Mchaa El-Jobbeh	M	M	L
Metrit	L	ML	L	Moghr El-Ahoual	L	ML	ML	Ouadi Qannoubine	VL	VL	VL
Qanat	L	L	L	Qnayouer	L	L	L	Tourza	L	ML	L

Batroun

Municipality	19-Dec	20-Dec	21-Dec	Municipality	19-Dec	20-Dec	21-Dec	Municipality	19-Dec	20-Dec	21-Dec
Aabrine	L	M	L	Aalali	L	ML	L	Aartziz	L	ML	M
Abdelli	L	M	M	Ajdabra	L	M	M	Assia	L	ML	L
Basbina	ML	M	M	Batroun	M	M	ML	Bcheleh	L	L	L
Bechtoudar	L	L	L	Beit Chlala	L	L	L	Beit Kassab	L	L	L
Bijdarfil	ML	M	M	Bqesmaya	L	ML	ML	Chatine	ML	L	L
Chebtin	L	ML	M	Chekka	M	M	L	Daael	L	ML	ML
Dahr Abi Yaghi	L	ML	M	Daraya El-Batroun	ML	M	M	Deir Billa	L	L	L
Deir Kfifane	ML	M	MH	Deir Mar Youhanna EL	L	L	L	Deir Mar Youssef Jra	L	M	M
Douma	ML	L	L	Douq	L	L	M	Eddeh El-Batroun	ML	M	M
Ftihat El-Batroun	L	ML	ML	Ghouma	ML	M	M	Hadtoun	L	L	L
Hamat	L	M	L	Harbouna	L	L	M	Hardine	L	L	L
Helta	L	ML	ML	Hery	M	M	L	Jebbla	L	ML	L
Jrabta El-Batroun	ML	M	M	Jrane El-Batroun	M	M	MH	Kfar Aabida	ML	M	MH
Kfar Halda	L	L	L	Kfarb Shlaimane	L	ML	ML	Kfarhatna	L	ML	M
Kfarhay	ML	M	ML	Kfarhelos	L	ML	L	Kfifane	ML	M	MH

Kfour El Arabi	ML	ML	L	Koubba	ML	M	L	Kour	ML	M	M
Mar Mama	L	L	ML	Masrah	L	L	M	Mehmarch	ML	ML	L
Mrah Chdid	ML	M	M	Mrah El Ziyat	ML	M	M	Mrah El-Hajj	L	L	L
Nahle El-Batroun	L	ML	L	Niha El-Batroun	ML	ML	L	Ouahj El-Hajjar	ML	M	L
Ouata Houb	L	L	L	Qatnaaoun	L	M	L	Racha	ML	ML	L
Rachana	ML	M	M	Rachkida	ML	M	L	Ram El-Batroun	L	L	L
Ras Nahhach	ML	M	L	Selaata	M	M	L	Sghar	ML	M	M
Smar Jbayl	ML	M	M	Sourat El-Batroun	L	ML	ML	Tannourine El-Faouqa	M	M	L
Tannourine Et-Tahta	L	L	L	Thoum	ML	M	M	Toula El-Batroun	L	ML	M
Zan	L	ML	M								

Zgharta

Municipality	19-Dec	20-Dec	21-Dec	Municipality	19-Dec	20-Dec	21-Dec	Municipality	19-Dec	20-Dec	21-Dec
Aachach	ML	M	ML	Aalma	ML	M	ML	Aarde	L	M	L
Aintourine	ML	M	L	Arabet Qozhaya	L	L	L	Arde	ML	M	ML
Arjis	ML	M	ML	Asnoun	L	M	ML	Ayto	L	ML	L
Basloukit	M	M	ML	Bchannine	ML	M	ML	Besebeel	ML	M	ML
Bhairret Toula	L	M	L	Bnachee	L	M	ML	Boussit	M	M	ML
Danha	ML	M	ML	Daraiya Zgharta	ML	M	ML	Deir Jdeide	L	M	ML
Ehden	M	M	L	Halan	M	M	ML	Hariq Zgharta	L	M	ML
Houakir	L	ML	ML	Hraiqis	ML	M	ML	laal	L	M	ML
Ijbaa	L	M	ML	Karm Saddeh	L	L	L	Kfarchakhna	ML	M	ML
Kfardlaqous	ML	M	ML	Kfarfou	ML	M	ML	Kfarhata Zgharta	L	M	ML
Kfarhoura	L	M	L	Kfarsghab	ML	M	L	Kfaryachit	ML	M	ML
Kfarzaina	ML	M	ML	Khaldiye	L	M	ML	Mazraat Ajbeaa	ML	M	ML
Mazraat Et-Teffah	L	M	ML	Mazraat Jneid	L	M	ML	Mejdlaya Zgharta	ML	M	ML
Merh Kfarsghab	L	M	ML	Miryata	ML	M	ML	Miziara	L	ML	ML
Mzraat Kefraya	M	M	ML	Qorah Bach	L	M	ML	Rachiine	ML	M	ML
Ras Kifa	L	M	L	Sakhra	L	M	ML	Sebhel Zgharta	L	M	ML
Serhel	L	L	L	Tallet Zgharta	L	M	ML	Toula Zgharta	L	ML	L
Zgharta	ML	M	ML								

Minieh-Denniye

Municipality	19-Dec	20-Dec	21-Dec	Municipality	19-Dec	20-Dec	21-Dec	Municipality	19-Dec	20-Dec	21-Dec
Aasaymout	L	ML	ML	Aaymar	L	ML	L	Aazki	ML	M	L
Ain El-Tineh-Miniyeh	L	ML	L	Assoun	L	ML	L	Bakhaaoun	L	M	L
Bchennata	M	M	ML	Bechehhara	L	L	ML	Beddawi	ML	M	ML
Behouaita	L	ML	L	Beit El Foqss	L	ML	L	Beit Haouik	ML	M	ML
Beit Zoud	L	ML	ML	Bekaasafrine	M	M	L	Borj El Yahoudiyeh	ML	M	ML
Bqarsouna	L	ML	L	Btermaz	L	M	ML	Debaael	L	M	ML
Deir Ammar	ML	M	ML	Deir Nbouh	L	ML	ML	Haouaret-Miniyeh	L	M	ML
Haql el Azimeh	L	M	L	Harf El Siyad	L	ML	L	Hazmiye-Miniyeh	L	ML	L
Izal	ML	M	L	Jarjour	VL	L	ML	Jayroun	L	M	L
Kahf El-Malloul	L	ML	ML	Karm El-Moher	ML	ML	L	Kfar Binine	L	M	ML
Kfarchalane	ML	M	L	Kfarhabou	ML	M	ML	Kharroub-Miniyeh	ML	M	ML
Mazraat El-Kreme	L	L	L	Mazraat Ketrane	L	ML	L	Merkebtta	ML	M	ML
Minyeh	ML	M	ML	Mrah El Sfirat	L	ML	ML	Mrah Sraj	L	ML	L
Mrebbine	ML	M	ML	Nabi Youcheaa	ML	M	ML	Nemrine	ML	M	L

Qarhaiya	L	M	ML	Qarne	VL	ML	L	Qarsita	L	ML	L
Qattineh-Miniyeh	L	L	L	Qemmamine	L	M	L	Qraine	L	ML	L
Raouda-Aadoua	ML	M	ML	Rihaniyet-Miniyeh	ML	M	ML	Sfireh	L	M	ML
Sir Ed-Danniyeh	L	ML	L	Tarane	L	M	ML	Terbol-Miniyeh	M	M	ML
Zaghartaghriane	L	ML	ML	Zouq Bhannine	ML	M	ML				

Nabatiye

Nabatiye

Municipality	19-Dec	20-Dec	21-Dec	Municipality	19-Dec	20-Dec	21-Dec	Municipality	19-Dec	20-Dec	21-Dec
Aabba	M	M	M	Aazzi	M	M	M	Adchit El-Chqif	M	M	M
Ain Bou Swar	ML	M	M	Ain Kana	M	M	M	Ali El-Taher	ML	M	M
Ansar	M	M	M	Arab Salim	M	M	M	Arnoun	ML	M	M
Bfaroue	ML	M	M	Breyqaah	M	M	M	Charqiyeh	M	M	M
Choukine	M	M	M	Deir El Zahrani	M	M	M	Doueir El-Nabatiyeh	M	M	M
Habbouch El-Nabatiye	M	M	M	Hamra El-Nabatiyeh	M	M	M	Harouf El-Nabatiyeh	M	M	M
Hmaile	M	M	M	Houmin El Faouqa	M	M	M	Houmin El Tahta	M	M	M
Jarjough	ML	M	M	Jbaah El-Nabatiyeh	L	M	M	Jebchit	M	M	M
Kfar Djal El-Nabatiy	M	M	M	Kfar Remmane	ML	M	M	Kfar Sir	M	M	M
Kfar Tebnit	M	M	M	Kfarfila	M	M	M	Kfour El-Nabatieh	M	M	M
Mayfadoun	M	M	M	Mazraat Bsaffour	M	M	M	Mazraat Chalbaal	M	M	M
Mazraat Dmoul	M	M	M	Mazraat El Khreibeh	M	M	M	Mazraat El-Bayad El-	M	M	M
Mazraat Kfarjaouz	M	M	M	Mazraat Qalaat Meiss	M	M	M	Nabatiyeh El-Fawka	M	M	M
Nabatiyeh Et-Tahta	M	M	M	Namiriyeh	M	M	M	Qaaqaaiyet El Jisr	M	M	M
Qossaibeh El-Nabatiy	M	M	M	Roumine	M	M	M	Sarba El-Nabatieh	M	M	M
Sir El-Gharbiyeh	M	M	M	Toul	M	M	M	Yehmor El-Nabatiyeh	ML	M	M
Zaoutar El Charkiyeh	ML	M	M	Zaoutar El-Gharbiyeh	M	M	M	Zebdine El-Nabatiyeh	M	M	M
Zefta	M	M	M								

Hasbaiya

Municipality	19-Dec	20-Dec	21-Dec	Municipality	19-Dec	20-Dec	21-Dec	Municipality	19-Dec	20-Dec	21-Dec
Ain Jarfa	L	M	M	Abou Qamha	ML	M	M	Ain Qania	ML	M	M
Bourghos	ML	M	M	Chebaa	ML	ML	M	Chouaya Hasbaya	ML	ML	M
Dellafeh	ML	M	M	Fardiss Hasbaiya	ML	M	M	Hasbaya	ML	M	M
Hbariyeh	ML	ML	M	Kaoukaba Hasbaiya	M	M	M	Kfar Chouba	ML	ML	M
Kfar Hamam	ML	ML	M	Kfeir El-Zait	L	ML	ML	Khalwat Hasbaya	L	L	ML
Khreibet Hasbaiya	ML	M	M	Majdiyyeh Hasbaiya	ML	M	M	Marj Ez-Zhour (Haouc	L	ML	ML
Meri	ML	M	M	Mimass	ML	M	M	Rachaiya El-Fokhar	ML	ML	M
Salaiyeb	ML	M	M								

Marjayoun

Municipality	19-Dec	20-Dec	21-Dec	Municipality	19-Dec	20-Dec	21-Dec	Municipality	19-Dec	20-Dec	21-Dec
Aalmane Marjaayoun	L	ML	M	Aamra	ML	M	M	Adayseh Marjaayoun	ML	M	M
Adchit El-Koussair	ML	M	M	Ain Aarab Marjaayoun	ML	M	M	Bani Haiyann	L	M	M
Blatt Marjaayoun	M	M	M	Blida	ML	M	M	Borj El-Moulouk	ML	M	M
Boueyda Marjaayoun	ML	M	M	Deir Mimass	ML	M	M	Deir Siriane	ML	M	M
Dibbine	M	M	M	Ebel El Saqi	M	M	M	Houla	ML	M	M
Houra	ML	M	M	Kfar Kila	ML	M	M	Khiam Marjaayoun	ML	M	M

Klayaa	ML	M	M	Majdel Selem	ML	M	M	Marjaayoun	M	M	M
Markaba	ML	M	M	Mays El-Jabal	ML	M	M	Mazraat Doumiat	M	M	M
Mazraat Sarada	ML	M	M	Mhaibib	ML	M	M	Qabrikha	L	M	M
Qantara	ML	M	M	Rab El-Thalathine	ML	M	M	Saouaneh Marjayoun	ML	M	M
Talloussa	L	ML	M	Taybeh Matjaayoun	ML	M	M	Touline	L	M	M

Bent Jbail

Municipality	19-Dec	20-Dec	21-Dec	Municipality	19-Dec	20-Dec	21-Dec	Municipality	19-Dec	20-Dec	21-Dec
Ain-Ebel	L	M	M	Aitaroun	ML	M	M	Aynata Bint Jbeil	ML	M	M
Ayta El-Chaeb	L	ML	M	Ayta El-Jabal	ML	M	M	Beit Lif	L	ML	M
Beit Yahoun	ML	M	M	Bint Jbeil	ML	M	M	Borj Qalaway	ML	M	M
Braachit	ML	M	M	Chakra	ML	M	M	Debel	L	M	M
Deir Antar	ML	M	M	Froun	ML	M	M	Ghandouriyeh Bint Jb	ML	M	M
Hanine	ML	M	M	Hariss	ML	M	M	Hdatha	ML	M	M
Jmeymeh	ML	M	M	Kafra Bint Jbeil	L	ML	M	Kfar Dounine	ML	M	M
Khirbet Selm	ML	M	M	Kounine	ML	M	M	Maroun El Ras	ML	M	M
Qalaway	ML	M	M	Qaouzah	L	ML	M	Qatmoun	ML	M	M
Ramya Bint Jbeil	L	ML	M	Rchaf	L	ML	M	Rmeich	ML	M	M
Safad Al Battikh	ML	M	M	Salhaneh	L	ML	M	Serbine	ML	M	M
Sultanieh Bint Jbeil	ML	M	M	Tibnine	ML	M	M	Tiri	L	M	M
Yaroun	ML	M	M	Yater	ML	M	M				

Mont Liban

Jbail

Municipality	19-Dec	20-Dec	21-Dec	Municipality	19-Dec	20-Dec	21-Dec	Municipality	19-Dec	20-Dec	21-Dec
Aabeydat	L	ML	M	Aalita	L	M	M	Aamchit	M	M	MH
Aarab El-Lahib	M	ML	L	Aarasta	L	L	L	Adonis Jbeil	L	ML	M
Afqa Jbeil	L	L	L	Ain El Delbeh Jbeil	L	M	L	Ain El-Ghouayba	L	L	L
Ain Jrain	L	ML	L	Ain Kfah	ML	M	M	Almat El Chemaliyat	L	ML	L
Almat El-Jenoubiya	L	ML	L	Aqoura	M	M	L	Bayzoun	L	M	M
Bchille Jbeil	L	M	M	Bechtlida	L	ML	M	Behdaydat	ML	M	M
Beit Habbaq	ML	M	M	Bejjeh	ML	M	M	Bekhaaz	ML	M	M
Berbara Jbeil	M	M	MH	Bintael	L	ML	M	Birket Hjoula	L	ML	M
Blatt Jbeil	ML	M	M	Boulhos	L	L	L	Breyj Jbeil	L	ML	M
Chamat	ML	M	M	Chikhane	M	M	MH	Chmout	L	ML	M
Eddeh Jbeil	ML	M	M	Ehmej	ML	L	L	Fatre	L	M	M
Ferhet	ML	M	M	Fghal	L	M	M	Frat	L	ML	L
Ghabat	ML	L	L	Ghalboun	ML	M	M	Gharzouz	ML	M	MH
Ghofrine	ML	M	M	Habil	L	L	M	Halate	ML	M	M
Haqel	L	L	M	Hbaline	ML	M	M	Hboub	ML	M	M
Hdeine	ML	L	L	Hema Er-Rehban	M	ML	L	Hema Mar Maroun Aann	M	ML	L
Hjoula	L	L	M	Hosrayel	M	M	M	Hsarat	ML	M	M
Hsoun	L	M	M	Jaj	ML	L	L	Janne	L	L	L
Jbeil	M	M	MH	Jeddeyl Jbeil	M	M	MH	Jlisse	L	ML	M
Jouret El-Qattine	L	ML	M	Kfar Baal Annaya	L	ML	M	Kfar Kidde	ML	M	M
Kfar Kouas	L	ML	M	Kfar Mashoun	M	M	M	Kfoun	L	ML	M

Kharbe Jbeil	ML	ML	M	Laqlouq	M	L	L	Lassa	L	L	L
Lehfed	L	L	L	Maad	ML	M	M	Mar Sarkis	M	L	L
Mastita	M	M	M	Mayfouq	L	L	L	Mazraat El Siyad	M	ML	L
Mazraat El-Maaden	L	ML	L	Mechane	L	L	M	Mechmech Jbeil	L	L	L
Mehrin	ML	M	M	Mejdel El-Akoura	ML	ML	L	Mghayreh Jbeil	M	L	L
Mounsef	M	M	MH	Nahr Ibrahim	M	M	M	Qahmez	L	L	L
Qartaba	L	L	L	Qartaboun	M	M	MH	Qattara Jbeil	L	L	L
Qorqraya	VL	L	L	Ramout	ML	M	MH	Ras Osta	L	ML	M
Rihane Jbeil	M	M	MH	Sakiet El-Khayt	L	M	M	Saqi Richmaya	L	L	L
Sebrine	L	ML	M	Seraita	ML	L	L	Souane Jbeil	ML	M	L
Tadmor	M	L	L	Tartej	ML	L	L	Torzaiya	L	ML	M
Yanouh Jbeil	ML	ML	L	Zibdine Jbeil	L	M	M				

El Metn

Municipality	19-Dec	20-Dec	21-Dec	Municipality	19-Dec	20-Dec	21-Dec	Municipality	19-Dec	20-Dec	21-Dec
Aain El-Qabu	L	L	L	Aain El-Qach	L	M	M	Aain El-Teffaha	ML	ML	M
Aain el-Safsaf El-M	L	ML	M	Abou Mizane	ML	ML	M	Ain Aar	M	M	MH
Ain Alaq	L	M	M	Ain El-Kharroube	ML	M	M	Ain El-Sendianeh	L	M	M
Ain El-Zeitoune	L	L	M	Ain Saadeh	L	M	M	Aintoura El-Matn	M	ML	L
Amaret Chalhoub	M	M	H	Antelias	M	M	MH	Atchaneh	L	M	M
Ayroun	L	M	M	Baabdat	L	L	M	Baouchariyeh	M	M	MH
Baskinta	ML	L	L	Beit Chabab	L	M	M	Beit El-Chaar	M	M	MH
Beit El-Kekko	M	M	MH	Beit Mery	L	M	M	Bhersaf	L	M	M
Bikfaya	L	M	M	Biyakout	M	M	M	Bnabil	L	L	M
Bourj Hammoud	M	M	H	Bqennaya	ML	M	M	Broummana El-Matn	L	M	M
Bsalim	ML	M	M	Bsifrine	L	L	M	Bteghrine	L	L	M
Chaouiye	L	M	M	Chouaya El-Matn	ML	ML	M	Choueir	L	ML	M
Chrine	L	L	M	Dahr El Sawan El-Mat	L	M	M	Daychouniyeh	M	M	M
Dbayeh	M	M	H	Deir Chamra	L	ML	M	Deir Mar Abda el Mch	ML	M	M
Deir Mar Roukouz	M	M	MH	Deir Tamiche	ML	M	M	Dik El-Mehdi	ML	M	MH
Dikwaneh	M	M	H	Douar El-Matn	L	ML	M	Fanar	M	M	M
Fraike	L	M	M	Haret El-Ballaneh	M	M	MH	Hbous	M	M	MH
Himlaya	L	M	M	Jal El Did	M	M	MH	Jdeideh El-Metn	M	M	MH
Jouar El-Matn	L	L	M	Jouret El-Ballout	L	M	M	Kaaqour	L	L	M
Kfar Aaqab	L	L	M	Kfertay El-Matn	L	L	L	Khenchara	L	L	M
Khillet El-Mtain	L	L	M	Konnabat Broummana	L	M	M	Konnabat Salima	L	L	M
Machraah El-Matn	L	L	L	Majdel Tarchich	M	ML	L	Majzoub	M	M	MH
Mansouriyeh El-Metn	M	M	M	Mar Boutros Karm Et-	L	M	M	Mar Chaya et Mzekke	L	M	M
Mar Moussa Ed-Douar	L	ML	M	Marjaba	L	L	M	Masqa	L	M	M
Mayasse	L	M	M	Mazraat Deir Aoukar	M	M	MH	Mazraat El-Hadirat	ML	M	MH
Mazraat Yachouh	M	M	M	Mchikha	ML	L	M	Menqlet Mezher	M	M	MH
Mhaydseh Matn	L	M	M	Mkalles	M	M	MH	Mrouj	M	L	ML
Mtain	M	ML	ML	Mtayleb	ML	M	M	Nabay	L	M	M
Naccache	M	M	MH	Ouadi Chahine	L	M	M	Ouadi El-Karm El-Mat	L	L	M
Ouata El-Mrouj	L	L	M	Ouyoun El-Matn	L	L	M	Qornet Chehwan	ML	M	M
Qornet El-Hamra	ML	M	M	Roumieh	L	M	M	Sfeilet Bikfaya	L	M	M
Sinn El-Fil	M	M	H	Zabbougha	L	L	M	Zalqa	M	M	MH

Zarouon	L	ML	M	Zekrite	ML	M	M	Zighrine El-Matn	L	M	M
Zouk El-Khrab	M	M	MH								

Chouf

Municipality	19-Dec	20-Dec	21-Dec	Municipality	19-Dec	20-Dec	21-Dec	Municipality	19-Dec	20-Dec	21-Dec
Aalmane El-Chouf	M	M	M	Aammqi El-Chouf	L	ML	M	Ain Ouzein	L	L	ML
Ain Qani	L	ML	ML	Ain Zhalta	L	L	M	Ainbal	L	ML	M
Amatour	L	ML	ML	Anout	ML	M	M	Atrine	L	ML	M
Baadarane	ML	ML	M	Baaqline	L	M	M	Baasir	M	M	M
Barja	M	M	M	Barouk	L	L	ML	Bater	ML	ML	M
Batloun	ML	ML	M	Bayqoun	M	M	M	Bchetfine	L	M	M
Beiteddine	L	ML	M	Benouati Ech-Chouf	L	ML	M	Berjein	ML	M	M
Bireh et Mtalleh	ML	M	M	Biret El-Chouf	M	M	M	Bkechtine Ouel Mchei	L	ML	M
Bkifa El-Chouf	ML	M	M	Botme	L	L	ML	Bqaiaa Ech-Chouf	L	M	M
Bsaba El-Chouf	ML	M	M	Chammis El-Chouf	M	M	M	Chehim	ML	M	M
Chemaarine	L	M	M	Chourit	L	ML	M	Daher El-Chouf	L	M	M
Dalhoun	ML	M	M	Damour	M	M	M	Daraya El-Chouf	L	M	M
Deir El-Moukhalles	L	M	M	Deir Baba	L	M	M	Deir Dourit	L	ML	M
Deir El-Qamar	ML	ML	M	Deir Kouche	L	M	M	Dibbieh	L	M	M
Dmit	ML	M	M	Fouara Jaafar	L	ML	M	Fraidis El-Chouf	ML	L	M
Ghabet Jaafar	L	M	M	Gharife	L	M	M	Haret Jandal	ML	ML	M
Hasrout	ML	M	M	Jadra	M	M	M	Jahlieh	L	M	M
Jbeih El-Chouf	ML	ML	M	Jdeidet El-Chouf	ML	ML	M	Jiyeh	M	M	M
Jleilyeh	ML	M	M	Jmailiyeh	M	M	M	Joun	ML	M	M
Kahlounie El-Chouf	ML	M	M	Ketermaya	M	M	M	Kfar Faqoud	L	M	M
Kfar Hamal	M	M	M	Kfar Him	ML	M	M	Kfar Katra	ML	ML	M
Kfar Niss	ML	ML	M	Kfar hay	ML	M	M	Kfarnabrakh	ML	M	M
Khirbet Bisri	L	ML	M	Knayse El-Chouf	L	M	M	Maaniyeh	M	M	M
Maasser Beiteddine	ML	ML	M	Maasser El-Chouf	ML	ML	ML	Majdalouna	ML	M	M
Majdel El-Meouch	ML	M	M	Mazboud	ML	M	M	Mazmoura	ML	M	M
Mazraat El Chouf	ML	M	M	Mazraat El Daher	L	M	M	Mazraat El-Douair	L	L	ML
Mechref	ML	M	M	Mghairie	M	M	M	Mghayrie El-Chouf	L	M	M
Moukhtara	L	ML	ML	Mrusti	ML	M	M	Mtolle	ML	M	M
Naameh	M	M	M	Niha El-Chouf	ML	ML	M	Ouadi Abou Youssef	L	ML	M
Ouadi Ed-Deir	ML	M	M	Ouadi El-Sit	ML	M	M	Ouadi bnehlay	L	ML	M
Qraibeh	ML	ML	M	Qreiaa	L	ML	M	Rmayle El-Chouf	M	M	M
Semqaniyeh	ML	M	M	Sibline	M	M	M	Sirjbeil	ML	M	M
Warhanieh	M	L	M	Werdaniyeh	M	M	M	Zaarourieh	ML	M	M

Baabda

Municipality	19-Dec	20-Dec	21-Dec	Municipality	19-Dec	20-Dec	21-Dec	Municipality	19-Dec	20-Dec	21-Dec
Abadiyeh	ML	M	M	Ain Mouaffaq	ML	M	M	Araiya	L	M	M
Arbaniyeh	L	L	M	Arsoun	L	L	M	Baabda	M	M	MH
Baalchmey	ML	M	M	Bmaryam	L	L	M	Bourj El-Brajneh	M	M	H
Boutchay	ML	M	M	Bsaba Baabda	ML	M	M	Btekhney	L	L	M
Btibyat	L	L	M	Bzebdine	L	L	M	Chbeniyeh	L	L	M
Chiyah	M	M	H	Chmeisset Baabda	L	L	M	Chouit	L	M	M
Deir El-harf	L	ML	M	Deir Khouna	L	L	M	Dlaybeh	L	ML	M

Falougha	ML	ML	M	Furn El-Chebbak	M	M	H	Hadath Beyrouth	M	M	MH
Halaliyeh Baabda	L	M	M	Hammana	ML	ML	M	Haret El Sett	L	ML	M
Haret Hamze	L	L	M	Haret Hreik	M	M	H	Hasbaiya El-Metn	L	L	M
Jouar El-Hoz	L	L	L	Jouret Arsoun	L	L	M	Kfar Chima	M	M	MH
Kfar Selouane	ML	L	L	Khalouat Baabda	ML	L	M	Kneisset Baabda	L	L	M
Laylakeh	M	M	H	Louayzeh Baabda	ML	M	M	Merdache	M	M	M
Mzairaa Baabda	L	ML	M	Ouadi Chahrour El OI	ML	M	M	Ouadi Chahrour El So	L	M	M
Qalaa Baabda	L	L	M	Qhraybe Baabda	L	L	M	Qobbayaa	ML	L	M
Qornayel	L	L	M	Qortada	L	ML	M	Qrayeh Baabda	L	L	M
Qsaibeh Baabda	L	M	M	Qtale Baabda	L	L	M	Ras El Metn	L	M	M
Ras El-Haref	ML	L	M	Rouayset El-Ballout	L	ML	M	Salima Baabda	L	L	M
Tahouitat El Ghadir	M	M	H	Tarchich	ML	ML	L	Zandouqa	L	ML	M

Aley

Municipality	19-Dec	20-Dec	21-Dec	Municipality	19-Dec	20-Dec	21-Dec	Municipality	19-Dec	20-Dec	21-Dec
Abey	ML	M	M	Aghmid	L	L	M	Ain Dara	ML	ML	M
Ain Drafil	L	M	M	Ain El Halazoun	ML	M	M	Ain El-Rmmaneh	L	L	M
Ain Jedideh	ML	M	MH	Ain Ksour	L	M	M	Ain Onoub	ML	M	M
Ain Traz	L	M	M	Ainab	L	M	M	Aley	ML	M	M
Aramoun	ML	M	M	Aytat	ML	M	M	Azouniyeh	ML	ML	M
Baawerta	ML	M	M	Badghan Oua Wadi Bad	ML	ML	M	Bassatine	ML	M	M
Bayssour	ML	M	M	Bchamoun	ML	M	M	Bdadoun	L	M	M
Behouara	ML	ML	M	Bennay	ML	M	M	Bhamdoun El-Dayaa	M	M	MH
Bhamdoun El-Mhatta	M	M	MH	Bkhechthey	ML	M	M	Bleibel	L	M	M
Bmakine	M	M	M	Bmehray	ML	ML	M	Bouzrid	L	M	M
Bserrine	M	M	M	Bsous	L	ML	M	Btalloun	M	M	M
Btater	M	M	M	Chanay	M	M	M	Charoun	ML	ML	M
Chartoun	L	ML	M	Chemlane	ML	M	M	Choueifat El-Aamrous	M	M	MH
Choueifat El-Oumara	M	M	MH	Choueifat El-Quoubbe	M	M	MH	Dakkoun	ML	M	M
Deir Qoubel	L	M	M	Dfoun	M	M	M	Douair El Remmaneh	L	ML	M
Ghaboun	ML	M	M	Habramoun	L	L	M	Homs Oua Hama	ML	M	M
Houmal	L	M	M	Jisr El Qadi	ML	M	M	Kehaleh	L	ML	M
Keyfoun	M	M	MH	Kfar Aamey	ML	M	M	Kommatyeh	ML	M	M
Maasrati	ML	M	M	Majdel Baana	ML	ML	M	Mansourieh et Ain El	M	M	MH
Mazraat El-Nahr	L	ML	M	Mchakhte	L	L	M	Mecherfeh	ML	ML	M
Mejdlaya	ML	M	M	Mrayjat	M	L	M	Ramliyah	ML	ML	M
Rechmaya	ML	M	M	Rejmeh	ML	ML	M	Remhala	ML	M	M
Rouaysset El Neemane	ML	M	M	Saoufar	ML	ML	M	Selfaya	L	M	M
Sirhmoul	L	M	M	Souq El Ghareb	ML	M	M	Taazanieh	M	M	MH

Kesrouane

Municipality	19-Dec	20-Dec	21-Dec	Municipality	19-Dec	20-Dec	21-Dec	Municipality	19-Dec	20-Dec	21-Dec
Achkout	L	M	M	Adma Oua Dafneh	M	M	M	Ain Ed-Delbe Kesroua	L	L	L
Ain El-Rihane	ML	M	M	Aintoura Kesrouane	M	M	M	Ajaltoun	L	M	M
Akaybeh Kesrouane	M	M	MH	Aramoun Kesrouane	ML	M	M	Azra ouel Ozor	ML	M	M
Ballouneh	L	M	M	Batha	ML	M	M	Bekaatat Achkout	ML	ML	M
Bekaatat Kanaan	L	L	L	Bizhel	L	M	M	Bouar	M	M	MH
Bqaatouta	ML	L	L	Bqaq Ed-Dine	M	M	M	Bzommar	ML	M	M

Chahtoul	ML	M	M	Chnaniir	M	M	M	Chouan	L	L	L
Daraya Kesrouane	L	M	M	Darououn	ML	M	M	Deir Baqlouch	ML	M	M
Dlebta	ML	M	M	Eghbeh	L	M	M	Faraya	M	ML	L
Fatka	M	M	M	Feytroun	L	L	M	Ghazir	M	M	M
Ghbaleh Kesrouane	ML	M	M	Ghedrass	ML	M	M	Ghosta	ML	M	M
Ghynéh	ML	M	M	Harharaya w Kattine	ML	M	M	Harissa Kesrouane	M	M	M
Hayata	L	M	M	Hosein	L	M	M	Hrajel	M	ML	L
Jdeideh Ghazir	M	M	M	Jeita	ML	M	M	Jounieh Ghadir	M	M	M
Jounieh Haret Sakhr	M	M	MH	Jounieh Salel Alma	M	M	M	Jounieh Sarba	M	M	H
Jouret Bedrane	ML	M	M	Jouret Mhad	L	ML	M	Jouret Termos	ML	M	M
Kfar Debiane	ML	L	ML	Kfar Tay Kesrouane	L	L	M	Kfar Yassine	M	M	MH
Kfour Kesrouane	M	M	M	Kharayeb Nahr Ibrahi	ML	M	M	Klayaat Kesrouane	L	M	M
Maarab	ML	M	M	Maaysra Kesrouane	ML	M	M	Mayrouba	ML	ML	L
Mazraat Er-Ras	M	M	M	Mazraat Mrah El-Mir	L	M	M	Mchaa El Ftouh	M	ML	L
Mchaa Faraya	M	L	L	Mchaa Kfar Dibiane	M	M	L	Mghaer	L	L	L
Mradiyah	L	M	M	Nahr Ed-Dahab	L	L	M	Nammoura Kesrouane	ML	M	M
Ouata El Jaouz	L	L	M	Ouata Sillam	M	M	H	Raachine	L	ML	M
Rayfoun	ML	M	M	Safra Kesrouane	M	M	MH	Shayle Kesrouane	ML	M	M
Tabarja	M	M	MH	Yahchouch	L	ML	M	Zaaytreh	ML	M	M
Zeytoun	ML	M	M	Zouk Mikael	M	M	MH	Zouk Mosbeh	M	M	MH

Baalbek_Hermel

Baalbek

Municipality	19-Dec	20-Dec	21-Dec	Municipality	19-Dec	20-Dec	21-Dec	Municipality	19-Dec	20-Dec	21-Dec
Aadous	ML	M	ML	Aamchki	M	M	L	Aarsal	M	M	ML
Ain Baalbek	L	M	ML	Ain Bourday	M	ML	L	Ain El-Benye	M	ML	L
Ain El-Jaouz Baalbek	M	M	L	Ain El-Siya Chadoura	M	M	L	Al Khodr Baalbek	ML	M	ML
Al Nabi Chit	ML	M	ML	Aynata Baalbek	M	M	L	Baalbek	M	M	L
Bachwat	L	ML	L	Barqa	L	ML	ML	Bednayel Baalbak	M	M	ML
Beit Chama	ML	M	ML	Bijjaje	L	M	ML	Bouday	L	ML	L
Brital	M	M	L	Btadi	L	M	ML	Chaat	L	M	L
Chaibe	M	M	L	Chlifa	ML	M	ML	Chmestar	ML	M	L
Dar El-Oussa	L	M	ML	Deir El-Ahmar	L	M	L	Deir Mar Maroun Baal	L	M	M
Douris	ML	M	ML	Fakiha	ML	M	ML	Hadath Baalbek	ML	M	L
Ham	M	ML	ML	Haour Taala	M	M	ML	Hizzine	ML	M	ML
Hlebta	L	M	ML	Hosh Barada	ML	M	ML	Hosh El Dahab	ML	M	ML
Hosh El Snid	ML	M	ML	Hosh El-Nabi	ML	M	ML	Hosh El-Rafiq	ML	M	ML
Hosh Tal Safiya	ML	M	ML	Hrebta	L	M	L	laat	ML	M	ML
Jebaa	ML	M	ML	Jenta	ML	ML	L	Kfar Dabach	ML	M	ML
Kfar Dane	ML	M	ML	Khraibeh El-Hermel	L	ML	L	Khreibet Baalbek	M	ML	ML
Kneisset Baalbek	ML	M	ML	Labueh	L	M	L	Maarboun	M	M	ML
Majdaloun	ML	M	ML	Maqneh	ML	M	ML	Mazraat Beit Mcheik	M	M	ML
Misraya	ML	M	ML	Moqraq	L	M	L	Nabha El-Damdoum	ML	M	L
Nabi Chbay	M	ML	L	Nabi Osman	L	M	ML	Nahleh baalbek	M	M	L
Ouadi El-Oss	L	ML	L	Qaa Baayoun	ML	M	M	Qaa Jouar Maqiye	L	M	M
Qaa Ouadi El-Khanzir	ML	M	M	Qah Baalbek	ML	M	M	Qarha Baalbek	L	ML	L

Qsarnaba	ML	M	ML	Ram Baalbek	L	ML	L	Ras Baalbek El Sahl	ML	M	M
Ras Baalbek El-Charq	M	M	M	Riha	L	M	L	Saaide	ML	M	ML
Sbouba	L	ML	L	Seriine El-Tahta	ML	M	ML	Slouqi	M	M	L
Taiba Baalbek	ML	M	ML	Talia	ML	M	ML	Taraiya	ML	M	L
Temnin El Fawqa	ML	M	ML	Temnin El-Tahta	L	ML	L	Tfail	M	M	L
Yahfoufa	M	ML	ML	Yammouneh	ML	M	L	Younine	ML	M	ML
Zboud	L	M	L								

Hermel

Municipality	19-Dec	20-Dec	21-Dec	Municipality	19-Dec	20-Dec	21-Dec	Municipality	19-Dec	20-Dec	21-Dec
Charbine El-Hermel	L	M	ML	Hermel Jbab	M	M	ML	Hermel	L	M	M
Maaysra El-Hermel	L	L	ML	Michaa Mrajhine	ML	M	ML	Ouadi Faara	L	M	ML
Ras Baalbek - Ouadi	ML	M	M	Ras Baalbek El Gharb	L	M	ML	Zighrine	L	M	M

Akkar

Akkar

Municipality	19-Dec	20-Dec	21-Dec	Municipality	19-Dec	20-Dec	21-Dec	Municipality	19-Dec	20-Dec	21-Dec
Aain Tinta	ML	M	ML	Aaiyat	ML	M	ML	Aakkar El-Aatiqa	L	M	L
Aamar Akkar	ML	M	ML	Aamar El Baykat	ML	M	ML	Aamayer	L	M	M
Aamriyet Akkar	ML	M	ML	Aandqet	L	M	M	Aarmeh	L	M	ML
Aarqa	ML	M	ML	Aawaynat	L	M	M	Aayoun Akkar	ML	M	ML
Abboudiye	ML	M	ML	Ain El-Zeit	ML	M	ML	Ain Yaaqoub	L	M	ML
Akroum	L	M	M	Aridet Cheikh Zennad	M	M	ML	Baldeh w Mazraat Bal	ML	M	ML
Barcha	ML	M	ML	Bardeh	ML	M	M	Bebnine	ML	M	ML
Beino	ML	M	ML	Beit Ayoub	M	M	ML	Beit El-Haouch	ML	M	ML
Beit Mellat	ML	M	ML	Beit Younes	L	ML	L	Berbara Akkar	ML	M	ML
Berqayel	ML	M	ML	Bezbina	L	M	L	Bireh Akkar	ML	M	ML
Borj	ML	M	ML	Bqerezla	ML	M	ML	Bzal	L	M	ML
Chane	L	ML	ML	Chaqdouf	ML	M	ML	Charbila	ML	M	ML
Cheikh Mohammad	ML	M	ML	Cheikh Taba Es-Sahl	ML	M	ML	Cheikh Taba	ML	M	ML
Cheikh Zennad	M	M	ML	Cheikhlar	L	M	M	Chir Hmairine	ML	M	ML
Daghle	ML	M	ML	Dahr Laissine	ML	M	ML	Darine	ML	M	ML
Dawra	L	M	L	Dawsa w Baghdadi	ML	M	ML	Dayret Nahr El-Kabir	ML	M	M
Deir Dalloum	ML	M	ML	Deir Jennine	ML	M	ML	Denbou	L	M	ML
Dibbbiyeh	ML	M	ML	Douair Aadwiyeh	ML	M	ML	Fassikine	ML	M	ML
Fnaydek	L	M	L	Fraydes Akkar	ML	M	L	Ghazayle	ML	M	ML
Habchit	L	ML	ML	Hakour	ML	M	ML	Halba	ML	M	ML
Haouchab	ML	M	ML	Hayssat	ML	M	ML	Haytla	ML	M	ML
Hayzouq	ML	M	ML	Hedd	ML	M	ML	Hmaira Akkar	ML	M	ML
Hmaiss Akkar	ML	M	ML	Hnaider	L	M	M	Hokr Ed-Dahri	ML	M	ML
Hokr Etti	ML	M	ML	Hokr Jouret Srar	ML	M	ML	Houaich	ML	M	ML
Hrar	ML	M	ML	Idbil	ML	M	ML	Ilal	ML	M	ML
Janine	ML	M	ML	Jdeidet El-Joumeh	ML	M	ML	Jdeidet El-Kaiteh	ML	M	ML
Jebayel	ML	M	ML	Kafr	ML	M	M	Kafr	ML	M	ML
Karm Asfour	ML	M	ML	Kfar Melki Akkar	ML	M	ML	Kfar Noun	L	M	ML
Kfarharra	ML	M	ML	Khalsa	L	M	M	Kharnoubet Akkar	ML	M	ML

Khirbet Daoud Aakkar	ML	M	ML	Khirbet El Remmane	L	M	M	Khirbet Shar	ML	M	ML
Khoreybet El-Jindi	ML	M	ML	Khreibet Aakkar	ML	M	ML	Kneisset Aakkar	ML	M	ML
Kneisset Hnaider	L	M	M	Knisse	ML	M	ML	Kroum El-Aarab	ML	M	ML
Kwachra	ML	M	ML	Kweykhath	ML	M	ML	Machta Hammoud	L	M	M
Majdala	ML	M	ML	Majdel Akkar	ML	M	ML	Mar Touma	ML	M	ML
Marlaya Melhem	ML	M	ML	Mashha	ML	M	ML	Massoudiye	ML	M	ML
Mazraat Beit Ghattas	ML	M	ML	Mazraat En-Nahriye	L	M	ML	Mechmech	L	M	L
Memneh	L	L	L	Mhammara	ML	M	ML	Mighraq Aakkar	M	M	ML
Minyara	ML	M	ML	Moqayteh	M	M	ML	Mounjez	ML	M	ML
Msalla	ML	M	ML	Mzeihmeh	ML	M	ML	Nfaisch	ML	M	ML
Noura Et-Tahta	ML	M	ML	Ouadi El-Haour	ML	M	ML	Ouadi El-Jamous	ML	M	ML
Ouyoun El-Ghizlane	ML	M	ML	Qaabarine	ML	M	ML	Qabaait	L	M	ML
Qachlaq	ML	M	ML	Qantara Aakkar	ML	M	ML	Qarha Aakkar	L	M	M
Qarqaf	ML	M	ML	Qboula	ML	M	ML	Qleiaat Aakkar	M	M	ML
Qloud El-Baqie	ML	M	ML	Qobaiyat Aakkar	L	M	ML	Qobbat Chamrat	M	M	ML
Qorayat	ML	M	L	Qornet Aakkar	ML	M	L	Qsair Aakkar	ML	M	ML
Rahbe	ML	M	L	Rihaniyet Aakkar	ML	M	ML	Rmah	L	M	M
Rmoul	ML	M	ML	Saadine	ML	M	ML	Sadaqa	ML	M	ML
Saidnaya	ML	M	ML	Sammouniye	ML	M	ML	Sayssoq	ML	M	ML
Semmaqiye	ML	M	ML	Semmaqli	ML	M	ML	Sfinet El-Dreib	ML	M	ML
Sfinet El-Qaitaa	L	M	ML	Sindyanet Zeidane	L	M	L	Souaisset Aakkar	ML	M	ML
Srar	ML	M	ML	Tal Abbas El Gharby	ML	M	ML	Tal Abbas El-Chargy	ML	M	ML
Tal Biret	ML	M	ML	Tal Hmayra	ML	M	ML	Tal Maayan Tal Kiri	ML	M	ML
Tal Sibel	ML	M	ML	Tallet Chattaha	ML	M	ML	Tikrit	ML	M	L
Tleil	ML	M	ML	Tshea	L	M	L	Zawarib	ML	M	ML
Zouq El Hosniyeh	ML	M	ML	Zouq El-Haddara	ML	M	ML	Zouq El-Hbalsa	ML	M	ML
Zouq El-Moqachrine	ML	M	ML								

Sud

Sour

Municipality	19-Dec	20-Dec	21-Dec	Municipality	19-Dec	20-Dec	21-Dec	Municipality	19-Dec	20-Dec	21-Dec
Aaiyeh	ML	M	M	Aalma El-Chaab	L	M	M	Aaytit	ML	M	M
Abbassiyeh Sour	M	M	M	Abou Chech	L	M	M	Ain Abou Abdallah	M	M	M
Ain Baal	M	M	M	Arzoun	ML	M	M	Aziyeh	L	ML	M
Baflaya	ML	M	M	Barich	M	M	M	Batouliyeh	M	M	M
Bayad	ML	M	M	Bazouriyeh	M	M	M	Bediass	M	M	M
Bestiyat	M	M	M	Borj El Chemali	M	M	M	Borj En-Naqoura	ML	M	M
Borj Rahhal	M	M	M	Boustane	ML	M	M	Btaychiyeh	L	M	M
Chaaitiye	ML	M	M	Chameh	L	M	M	Chehabiye	ML	M	M
Chehour	L	ML	M	Chihine	L	ML	M	Debaal Sour	ML	M	M
Deir Amess	L	ML	M	Deir Kifa	ML	M	M	Deir Qanoun El-Ain	M	M	M
Deir Qanoun El-Naher	M	M	M	Derdghaiya	ML	M	M	Dhayra	L	M	M
Halloussiyeh	M	M	M	Hamoul	L	ML	M	Hanaouey	M	M	M
Henniye	M	M	M	Hmairi Sour	ML	M	M	Iskandarouna Sour	L	M	M
Jbal El Botom	ML	M	M	Jebbin	ML	M	M	Jennata	M	M	M
Jijim	L	ML	M	Jouaiya	ML	M	M	Kneisset Sour	ML	M	M

Maarake	M	M	M	Maaroub	M	M	M	Majadel	ML	M	M
Majdalzoun	L	M	M	Mansouri Sour	ML	M	M	Marnba	L	ML	M
Marouahine	L	ML	M	Mazraat El-Zalloutiy	ML	M	M	Mazraat Mechref	ML	M	M
Mazraat Tayr Semhat	L	L	M	Mheilib	M	M	M	Neffakhiyeh	ML	M	M
Niha Sour	ML	M	M	Ouadi Jilo	M	M	M	Qana	ML	M	M
Qolaileh Sour	ML	M	M	Rechknany	ML	M	M	Rmadiyeh	M	M	M
Selha Sour	ML	M	M	Siddiqine	ML	M	M	Sour	M	M	M
Srifa	ML	M	M	Tayr Debbe	M	M	M	Tayr Felsay	ML	M	M
Tayr Harfa	ML	M	M	Touayri	L	ML	M	Toura	M	M	M
Yanouh Sour	M	M	M	Yarine	ML	M	M	Zebqine	L	ML	M

Saida

Municipality	19-Dec	20-Dec	21-Dec	Municipality	19-Dec	20-Dec	21-Dec	Municipality	19-Dec	20-Dec	21-Dec
Aanqoun	M	M	M	Aaqtanit	M	M	M	Aarab Ej-Jall	M	M	M
Aarab Tabbaya	M	M	M	Abra Saida	M	M	M	Adloun	M	M	M
Adousiyeh	M	M	M	Ain-El-Deleb	M	M	M	Arzai	M	M	M
Babliyah	M	M	M	Barty	ML	M	M	Bissariyeh	M	M	M
Bnaafoul	M	M	M	Bqosta	M	M	M	Bramiy --	M	M	M
Daoudiyeh	M	M	M	Dareb El-Sim	M	M	M	Erkay	M	M	M
Ghassanieh	M	M	M	Ghazieh	M	M	M	Hajjeh	M	M	M
Haret Saida	M	M	M	Hartiyeh	M	M	M	Hlaliye Saida	M	M	M
Insariyat	M	M	M	Jazira Saida	M	M	M	Kafar Bit	M	M	M
Kaoutariyet El-Siyad	M	M	M	Kfar Chellal	M	M	M	Kfar Hatta Saida	M	M	M
Kfar Milke Saida	M	M	M	Khartoum	M	M	M	Khaziz	M	M	M
Khirbet Ed-Douair Sa	M	M	M	Khirbet El-Bassal	M	M	M	Khrayeb Saida	M	M	M
Loubieh	M	M	M	Maghdouche	M	M	M	Majdelyoun	M	M	M
Matariyet El-Choumar	M	M	M	Matayriyeh	M	M	M	Mazraat 'Mseileh	M	M	M
Mazraat 'Snaiber	M	M	M	Mazraat Aarab Soukka	M	M	M	Mazraat Deir Taqla	M	M	M
Mazraat El Yahoudiye	M	M	M	Mazraat El-Housseini	M	M	M	Mazraat El-Mhaydaleh	M	M	M
Mazraat El-Ouasta	M	M	M	Mazraat Jamjim	M	M	M	Mazraat Kaoutariyet	M	M	M
Mazraat Kfar Badda	M	M	M	Mazraat Oussamiyat	M	M	M	Mazraat Sari	M	M	M
Mazraat Sinai	M	M	M	Meemariyeh	M	M	M	Merouaniyeh	M	M	M
Miyeh ou Miyeh	M	M	M	Najjariyeh	M	M	M	Qaaqaiyat El-Snaouba	M	M	M
Qnarit	M	M	M	Qraiye Saida	M	M	M	Saida Ed-Dekermane	M	M	M
Saida El-Oustani	M	M	M	Saida El-Qadimeh	M	M	M	Saida Kefraya	M	M	M
Saksakiyeh	M	M	M	Salhie Saida	M	M	M	Sarafand	M	M	M
Sfenta	ML	M	M	Tafahta	M	M	M	Tanbourit	M	M	M
Tebna	M	M	M	Zaghdraiya	M	M	M	Zeita	M	M	M
Zrariyeh	M	M	M								

Jezzine

Municipality	19-Dec	20-Dec	21-Dec	Municipality	19-Dec	20-Dec	21-Dec	Municipality	19-Dec	20-Dec	21-Dec
Ain El-Mir (El Estab	M	M	M	Anane	L	M	M	Aramta	ML	M	M
Ariya	ML	ML	M	Aychiyeh	L	ML	M	Azour	L	M	M
Baba	L	ML	M	Baysour Jezzine	M	M	M	Benoueteh Jezzine	ML	M	M
Bhannine	ML	ML	M	Bisri	L	ML	M	Bkassine	L	ML	M
Bouslaya	L	ML	M	Btedine El-Leqech	L	M	M	Chbail	L	L	ML
Choualiq Jezzine	M	M	M	Dahr Ed-Deir	L	M	M	Deir El Qattine	L	ML	M

Demachqiyeh	ML	M	M	Ghabbatiyeh	L	M	M	Harf Jezzine	L	M	M
Hassaniyeh	M	M	M	Haytouleh	ML	M	M	Haytura	L	M	M
Hidab	ML	ML	M	Homsiyeh	L	M	M	Jabal Toura	ML	M	M
Jarmaq	ML	M	M	Jensnaya	M	M	M	Jernaya	M	M	M
Jezzine	ML	M	M	Karkha	ML	M	M	Kfar Falous	ML	M	M
Kfar Houna	ML	ML	M	Kfar Jarrah	M	M	M	Lebaa	M	M	M
Louayzet Jezzine	L	M	M	Machmouche	L	ML	M	Mahmoudiyeh Jezzine	ML	M	M
Maknounye Jezzine	L	ML	M	Maraat Ouazaiyeh	ML	M	M	Mazraat Daraya	L	ML	M
Mazraat El-Aarqoub	L	ML	M	Mazraat El-Mathane	L	ML	M	Mazraat El-Rahbane	L	ML	M
Mazraat Khallet Khaz	L	M	M	Mazraat Louzid (Loua	L	L	ML	Mazraat Qrouh	ML	M	M
Mazraat Tamra	M	M	M	Mazraat Zighrine Jez	L	ML	M	Mazraat	L	L	M
Mharbiyeh	M	M	M	Midane Jezzine	L	M	M	Mjeydel Jezzine	M	M	M
Mlikh	L	M	M	Mrach El-Hbasse	M	M	M	Ouadi Baanqoudaine	M	M	M
Ouadi El-Laymoun	M	M	M	Ouardiyeh	VL	L	ML	Qabaa Jezzine	L	M	M
Qatrani	L	ML	M	Qaytouleh	L	M	M	Qtaleh Jezzine	L	M	M
Rihane Jezzine	ML	M	M	Rimat	L	ML	M	Roum	L	M	M
Roummanet	ML	M	M	Sabbah	L	ML	M	Saydoun	L	ML	M
Sfaray	L	M	M	Snaya	L	M	M	Sojoud	L	ML	M
Srayri	ML	M	M	Taaid	L	ML	M	Wadi Jezzine	L	ML	ML
Zhalta	L	M	M								

Bekaa

West Bekaa

Municipality	19-Dec	20-Dec	21-Dec	Municipality	19-Dec	20-Dec	21-Dec	Municipality	19-Dec	20-Dec	21-Dec
Aammq BG	M	M	M	Ain El Tineh BG	ML	M	M	Ain Zebdeh	ML	M	M
Ana	ML	M	M	Aytanit	L	ML	M	Baaloul BG	ML	ML	M
Bab Mareh	M	M	M	Chouberqiye Aammq	ML	ML	M	Dakoue	ML	ML	M
Deir Ain El-Jaouze	ML	M	M	Deir Tahniche	ML	M	M	Ghaza	ML	ML	M
Harime El-Soughra	ML	ML	M	Hoch Harimeh	ML	ML	M	Jazira BG	ML	ML	M
Jib Jennine	ML	M	M	Kamed-El-Laouz	ML	ML	M	Kefraya BG	L	ML	M
Khiara El Atika	ML	ML	M	Khiara	ML	ML	M	Khirbet Qanafar	ML	M	M
Lala	ML	M	M	Lebbaya BG	ML	ML	M	Loussa	ML	M	M
Machghara	ML	ML	M	Manara (Hammar) BG	L	L	ML	Mansoura BG	ML	M	M
Marej BG	ML	ML	ML	Maydoun	ML	M	M	Ouaqf BG	ML	ML	M
Qaraaoun	ML	M	M	Qelya	M	M	M	Raouda (Istabel)	ML	M	M
Saghbine	ML	ML	M	Sohmor	ML	ML	M	Soltan Yacoub el Ara	ML	ML	M
Souairy	ML	ML	M	Sultan Yaacoub	ML	ML	M	Tal Znoun	ML	M	M
Yehmor BG	ML	ML	M	Zilaya	ML	ML	M				

Zahle

Municipality	19-Dec	20-Dec	21-Dec	Municipality	19-Dec	20-Dec	21-Dec	Municipality	19-Dec	20-Dec	21-Dec
Aanjar (Haouch Mouss	ML	M	M	Ablah	L	ML	L	Ain Kfarzabad	ML	ML	L
Ali-El-Nahri	ML	ML	ML	Bar Elias	ML	M	ML	Bouarej	M	M	ML
Cheberqiyet Tabet	ML	M	ML	Chtaura	ML	M	ML	Deir El Ghazal	ML	ML	L
Delhamiyet Zahle	ML	ML	ML	Ferzol	ML	M	ML	Haouch El-Ghanam	ML	ML	ML
Haouch Es-Siyadeh	ML	ML	ML	Haouch Hala	L	ML	ML	Haouch Mandara	ML	M	ML

Haouch Qayssar	ML	ML	ML	Hezerta	M	M	ML	Hosh Moussa	ML	ML	ML
Jdita	ML	M	ML	Kfarzabad	ML	M	ML	Ksara	ML	ML	ML
Majdel Aanjar	L	ML	M	Makssi	ML	M	ML	Massa	ML	M	ML
Mazraat Er-Remtaniye	M	M	ML	Mrayjat Zahle	M	M	ML	Mzaraa Zahle	ML	M	ML
Nabi Ayla	L	M	L	Nasriyet Rizk	ML	ML	ML	Nasriyet Zahle	ML	ML	ML
Niha Zahle	ML	M	L	Ouadi Ed-Deloum	M	M	ML	Ouadi El-Arayech	ML	M	ML
Qaa El Rim	M	M	ML	Qab Elias	ML	M	ML	Qousaya	ML	ML	L
Rhit	ML	ML	ML	Riyak	ML	ML	ML	Saadnayel	ML	ML	ML
Taal El-Akhdar	ML	ML	M	Taalbeya	ML	M	ML	Taanayel	ML	M	ML
Talamara	ML	ML	ML	Tcheflik Edde Haouch	M	M	ML	Tcheflik Qiqano	ML	ML	ML
Terbol Zahle	ML	ML	ML	Touaite Zahle	M	M	ML	Zahle Aradi	M	M	ML
Zahle El-Berbara	ML	M	ML	Zahle El-Maallaqa	ML	M	ML	Zahle El-Midane	ML	M	ML
Zahle Er-Rassiye	ML	M	ML	Zahle Haouch El-Ouma	ML	ML	ML	Zahle Haouch El-Ouma	ML	ML	ML
Zahle Haouch Ez-Zara	ML	M	ML	Zahle Maalaqa Aradi	ML	M	ML	Zahle Mar Antonios	ML	M	ML
Zahle Mar Elias	ML	M	ML	Zahle Mar Gerios	ML	M	ML	Zahle Saydet En-Naja	ML	M	ML
Zebdoul	ML	M	L								

Rachaiya

Municipality	19-Dec	20-Dec	21-Dec	Municipality	19-Dec	20-Dec	21-Dec	Municipality	19-Dec	20-Dec	21-Dec
Ain Arab Rachaiya	ML	L	M	Ain Ata	ML	L	ML	Ain Harche	ML	L	M
Aqabe Rachaya	M	ML	M	Ayha	M	M	M	Ayta El Fokhar	ML	L	M
Bakifa Rachaya	M	ML	M	Bakka	ML	L	M	Beit Lahya	M	ML	M
Bireh Rachaiya	ML	ML	M	Daher El Ahmar	M	ML	M	Deir El-Achayer	ML	M	ML
Heloua Rachaiya	ML	ML	ML	Hoch El Qannabeh Rac	ML	ML	ML	Kaoukaba Bou Arab	ML	L	M
Kfar Danis	M	ML	M	Kfar Mechki	ML	ML	M	Kfar Qouq	ML	ML	ML
Kherbet Rouha	ML	L	M	Majdel Balhiss	ML	ML	M	Mdoukha	ML	L	M
Mhaydseh Rachaiya	ML	ML	M	Nabi Safa	ML	ML	M	Rachaiya	M	ML	M
Rafid Rachaiya	M	ML	M	Selsata (Mazraat Dei	L	ML	L	Tannoura	M	ML	M
Yanta	ML	ML	ML								

Beyrouth

Beyrouth

Municipality	19-Dec	20-Dec	21-Dec	Municipality	19-Dec	20-Dec	21-Dec	Municipality	19-Dec	20-Dec	21-Dec
Achrafieh	M	M	MH	Ain el-Mreisse	M	M	H	Bachoura	M	M	H
Beirut Central Distr	M	M	H	Marfai	M	M	H	Mazraa	M	M	H
Medaouar	M	M	H	Minet el-Hosn	M	M	H	Mwssaitbeh	M	M	H
Ras Beirut	M	M	MH	Rmeil	M	M	H	Saifi	M	M	H
Zqaq el-Blat	M	M	H								



نشرة الطقس الصادرة عن دائرة التقديرات في مصلحة الأرصاد الجوية

الأحد: ١٨ كانون الأول ٢٠١٦

النشرة: المسائية

الحالة العامة: كتل هوائية شمالية باردة تسيطر على الحوض الشرقي للمتوسط حتى يوم الاربعاء حيث سيتأثر لبنان بمنخفض جوي يؤدي الى طقس متقلب

الطقس المتوقع في لبنان:

الأحد: قليل الغيوم صباحاً يتحول بعد الظهر الى غائم بسحب متوسطة مع احتمال تساقط الرذاذ خاصة في المناطق الجنوبية وانخفاض بدرجات الحرارة، نحر من تكوّن الجليد على الطرقات الجبلية والداخلية خلال الليل وساعات الصباح الاولى.

الاثنين: قليل الغيوم مع بداية ارتفاع طفيف بدرجات الحرارة، ويبقى خطر تكوّن الجليد على الطرقات الجبلية والداخلية خلال الليل وساعات الصباح الاولى.

الثلاثاء: غائم جزئياً الى غائم بسحب مرتفعة ومتوسطة مع ارتفاع محدود بدرجات الحرارة. يتحول مساء الى غائم مع ضباب على المرتفعات واحتمال تساقط أمطار محلية وبعض الثلوج على ارتفاع 1200م وما فوق خاصة في المناطق الشمالية.

درجات الحرارة المتوقعة		الأحد		الاثنين		الثلاثاء	
الساحل	صور	٨/١٦	٧/١٥	٨/١٦	٨/١٦	٤/١٦	٤/١٦
	بيروت	١١/١٦	١٠/١٥	١١/١٦	١١/١٦	١١/١٦	١١/١٦
	طرابلس	٥/١٠	٥/١١	٥/١٠	٥/١٠	٤/١٣	٤/١٣
الجبال	بيصور	١/٧	٠/٦	١/٧	٠/٦	١/٨	٠/٨
	قرطبا	١/٥	٠/٤	١/٥	٠/٤	٠/٦	٠/٦
الأرز		١٠-/٠	١٣-/٢-	١٠-/٠	١٣-/٢-	٩-/٠	٩-/٠
الداخل	مرجعيون	٢/٨	١/٦	٢/٨	١/٦	١/٦	١-/٦
	زحلة	٠/٤	١-/٣	٠/٤	١-/٣	١-/٥	١-/٥

الرياح السطحية: شمالية شرقية الى شمالية، سرعتها بين ١٠ و ٣٠ كلم/س.

الانقشاع: جيد

الرطوبة النسبية على الساحل: بين ٤٥ و ٧٥ %.

حال البحر: متوسط ارتفاع الموج

الضغط الجوي: ١٠٢٥ HPA

ساعة شروق الشمس: ٠٦:٣٨

حرارة سطح الماء: ١٩°م.

أي ما يعادل: ٧٦٩ ملم زئبق

ساعة غروب الشمس: ١٦:٣٢