

# Lebanon Fire Risk Bulletin



CIVIL DEDEFENCE

*Refer to cadast condition.*

*General description of potential fire risk situation*

Symbol	Level of risk	Meaning and actions
VL	<b>Very low</b>	Very low fire risk. Controlled burning operations can be hardly executed due to high fuel moisture content. Normally wildfires self-extinguish.
L	<b>Low</b>	Low fire risk. Controlled burning operations can be executed with a reasonable degree of safety.
ML	<b>Medium low</b>	Medium-low fire risk. Controlled burning operations can be executed in safety conditions. All the fires need to be extinguished.
M	<b>Medium</b>	Medium fire risk. Controlled burning operations would be avoided. All the fires need to be very well extinguished.
M	<b>Medium high</b>	Controlled burning is not recommended. Open flame will start fires. Cured grasslands and forest litter will burn readily. Spread is moderate in forests and fast in exposed areas. Patrolling and monitoring is suggested. Fight fires with direct attack and all available resources.
H	<b>High</b>	Ignition can occur easily with fast spread in grass, shrubs and forests. Fires will be very hot with crowning and short to medium spotting. Direct attack on the head may not be possible requiring indirect methods on flanks. Patrolling and monitoring the territory is highly suggested.
E	<b>Extreme</b>	Ignition can occur also from sparks. Fires will be extremely hot with fast rate of spread. Control may not be possible during day due to long range spotting and crowning. Suppression forces should limit efforts to limiting lateral spread. Damage potential total. Patrolling and monitoring the territory is highly suggested.

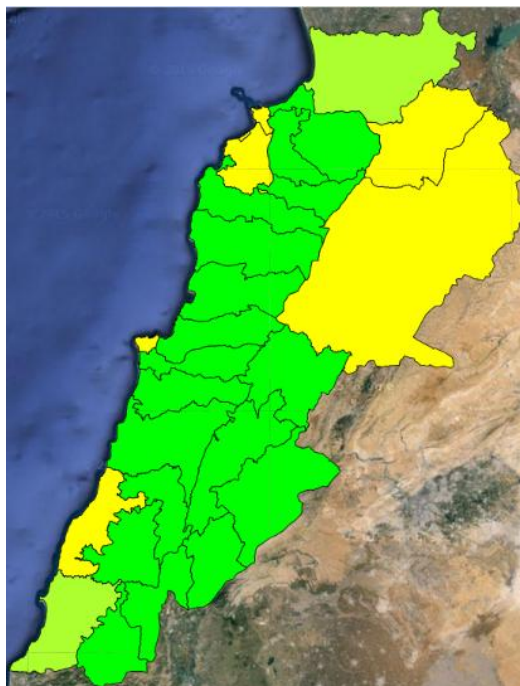
**Beirut, 19 January 2016**

# FIRE RISK INDEX

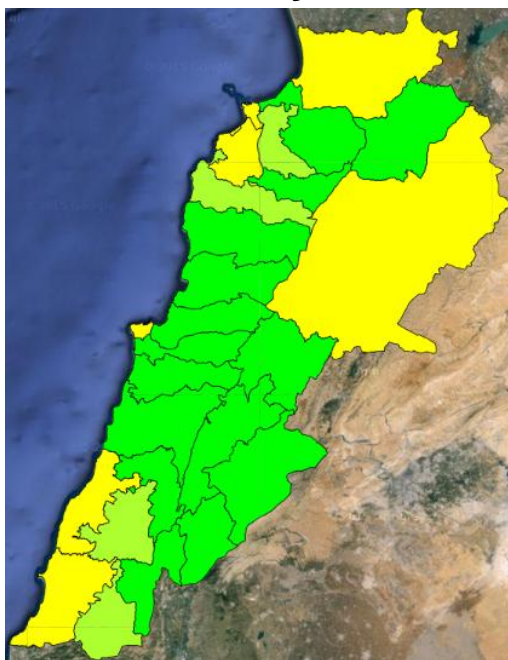
18 January 2016



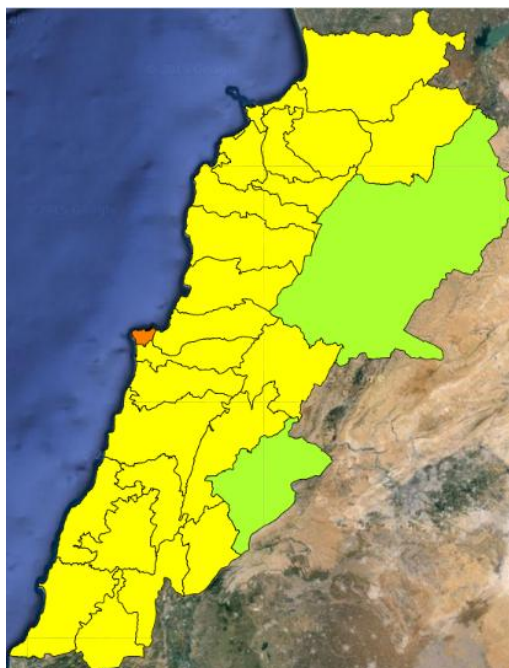
19 January 2016



20 January 2016



21 January 2016



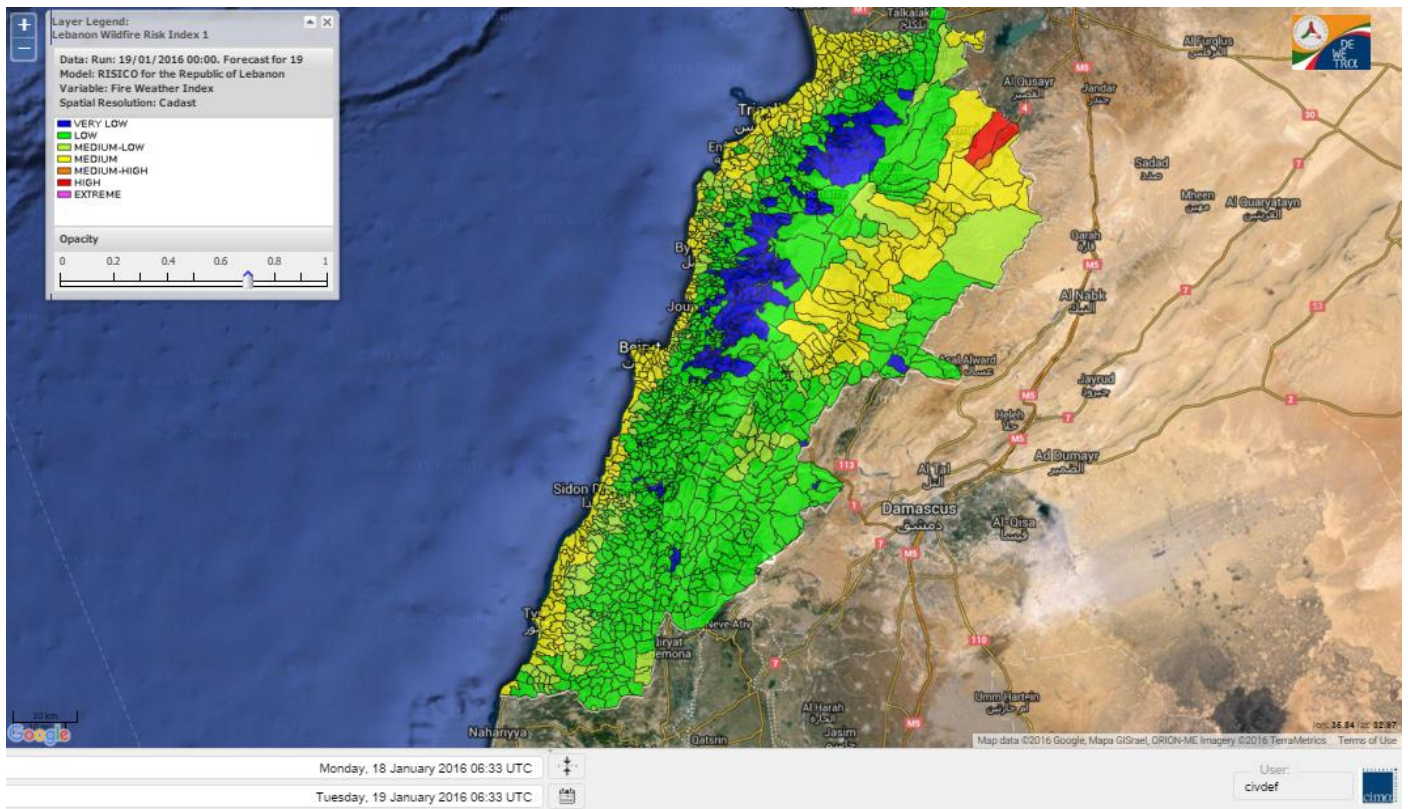
Layer Legend:  
Lebanon Wildfire Risk Index 1

Data: Run: 19/01/2016 00:00. Forecast for 19  
Model: RISICO for the Republic of Lebanon  
Variable: Fire Weather Index  
Spatial Resolution: Caza

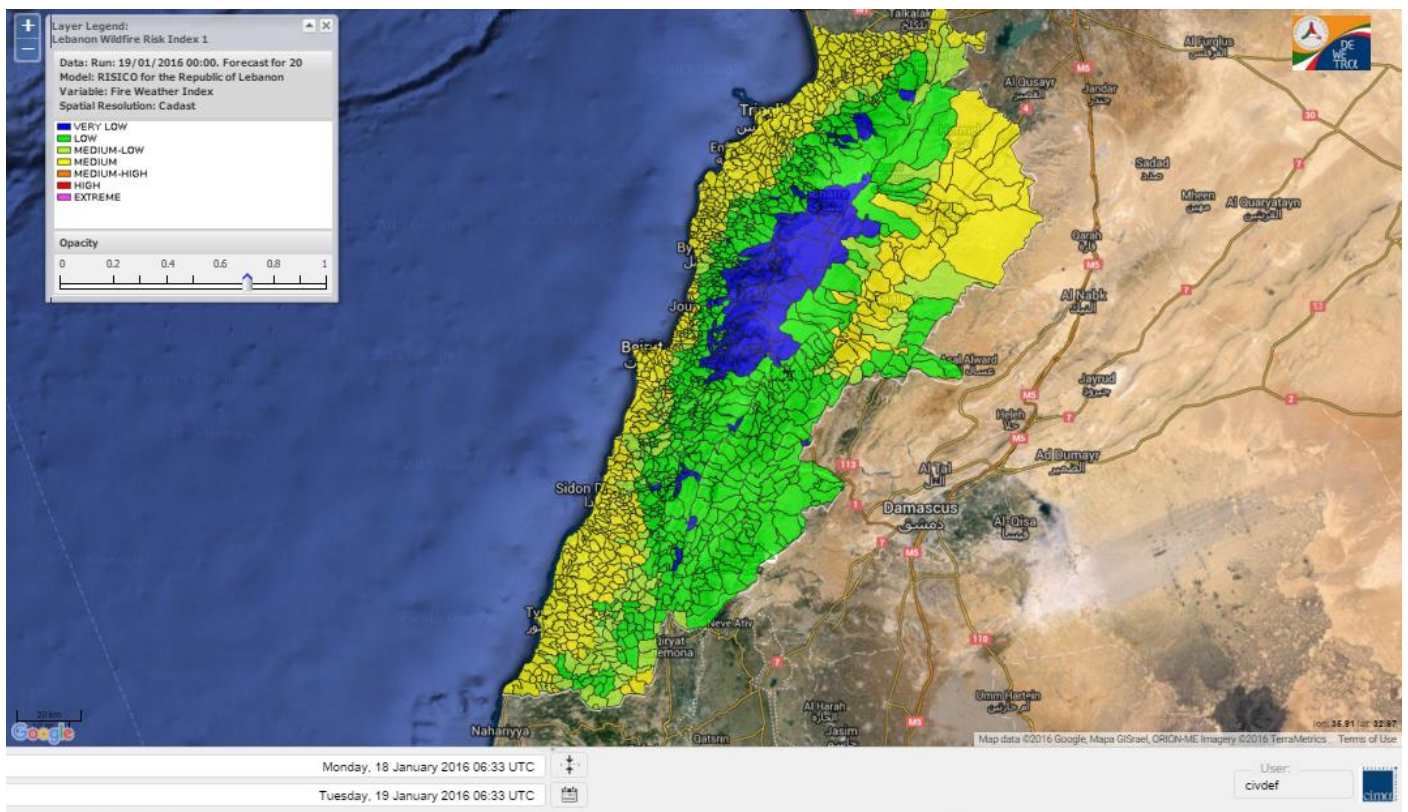
- VERY LOW
- LOW
- MEDIUM-LOW
- MEDIUM
- MEDIUM-HIGH
- HIGH
- EXTREME



# Lebanon for 19 January 2016

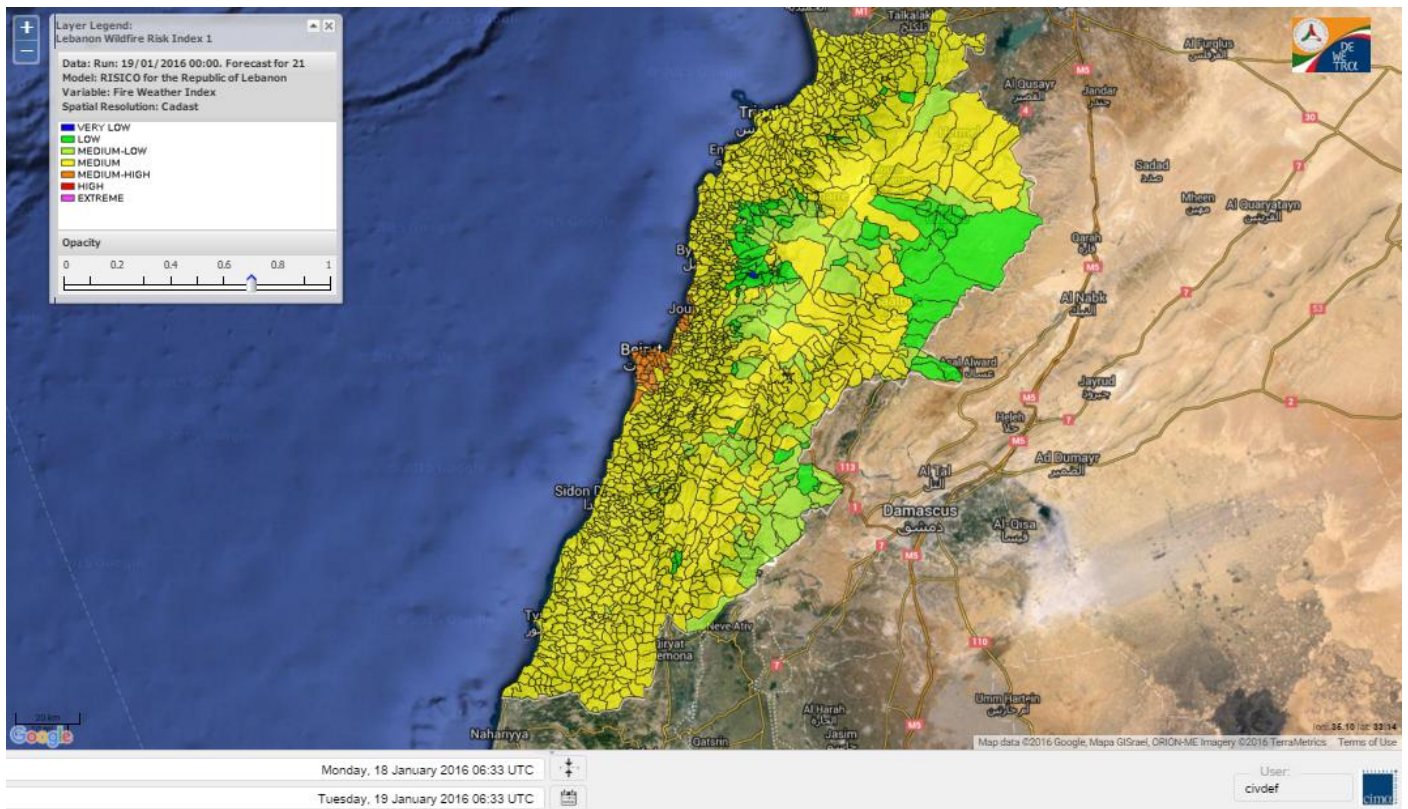


# Lebanon for 20 January 2016

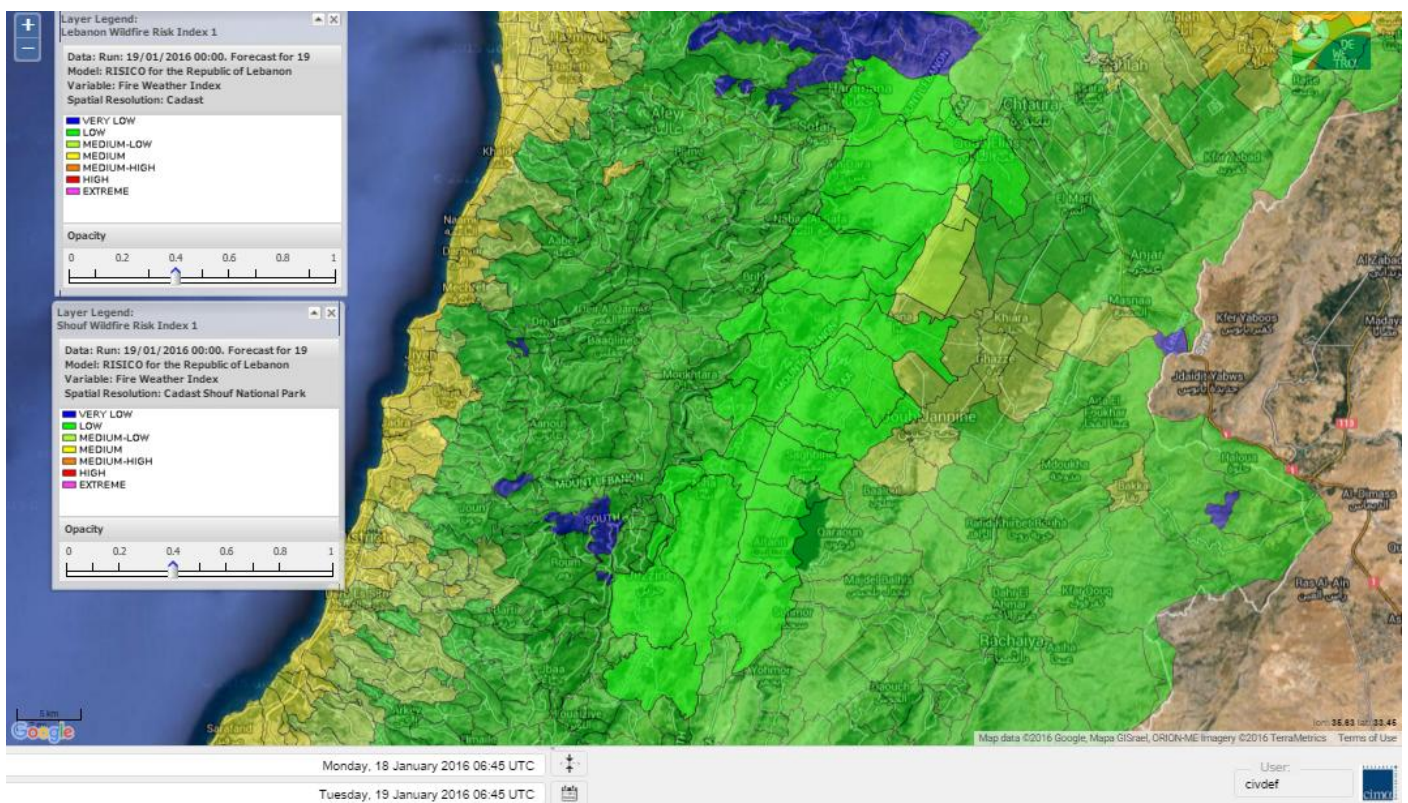




# Lebanon for 21 January 2016

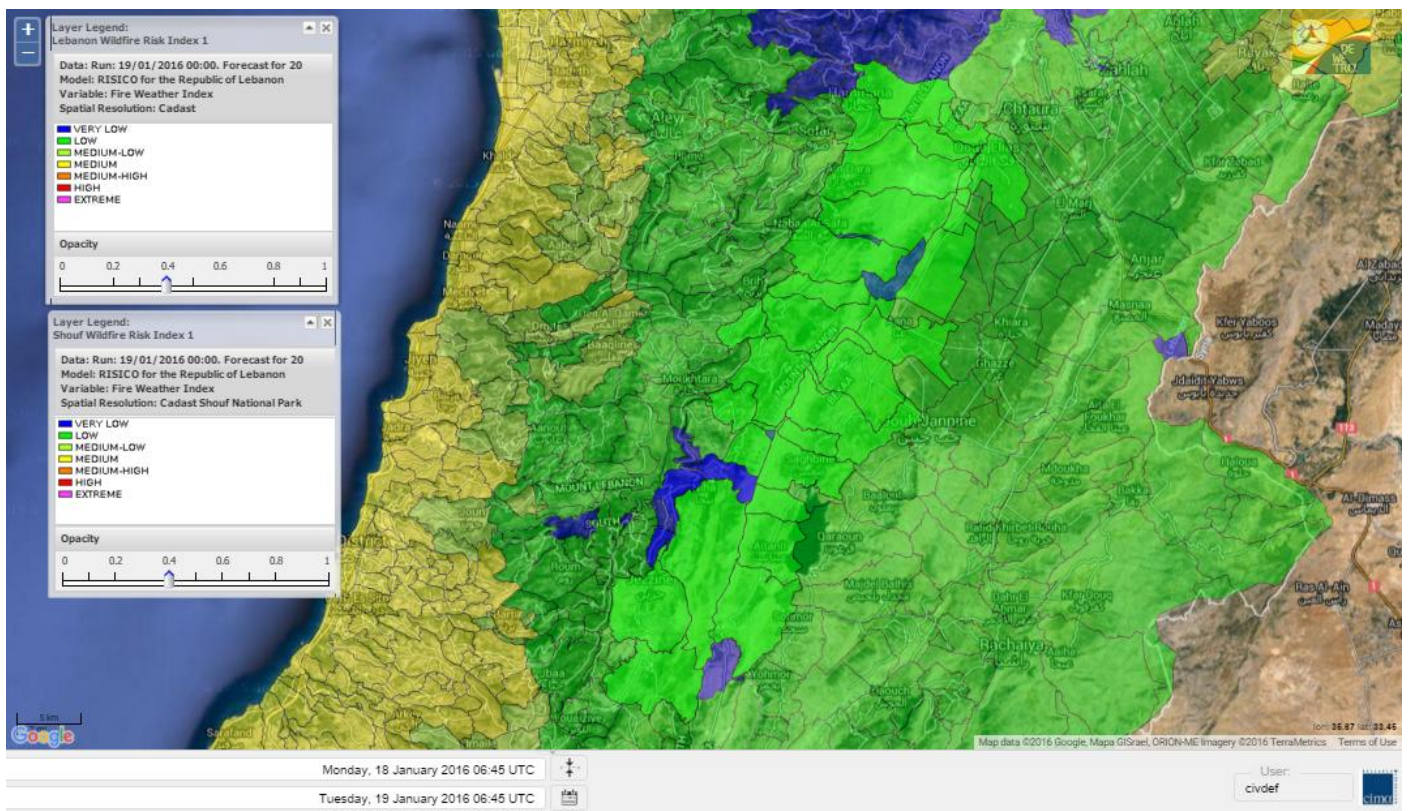


# Shouf Biosphere Reserve Forecast for 19 January 2016

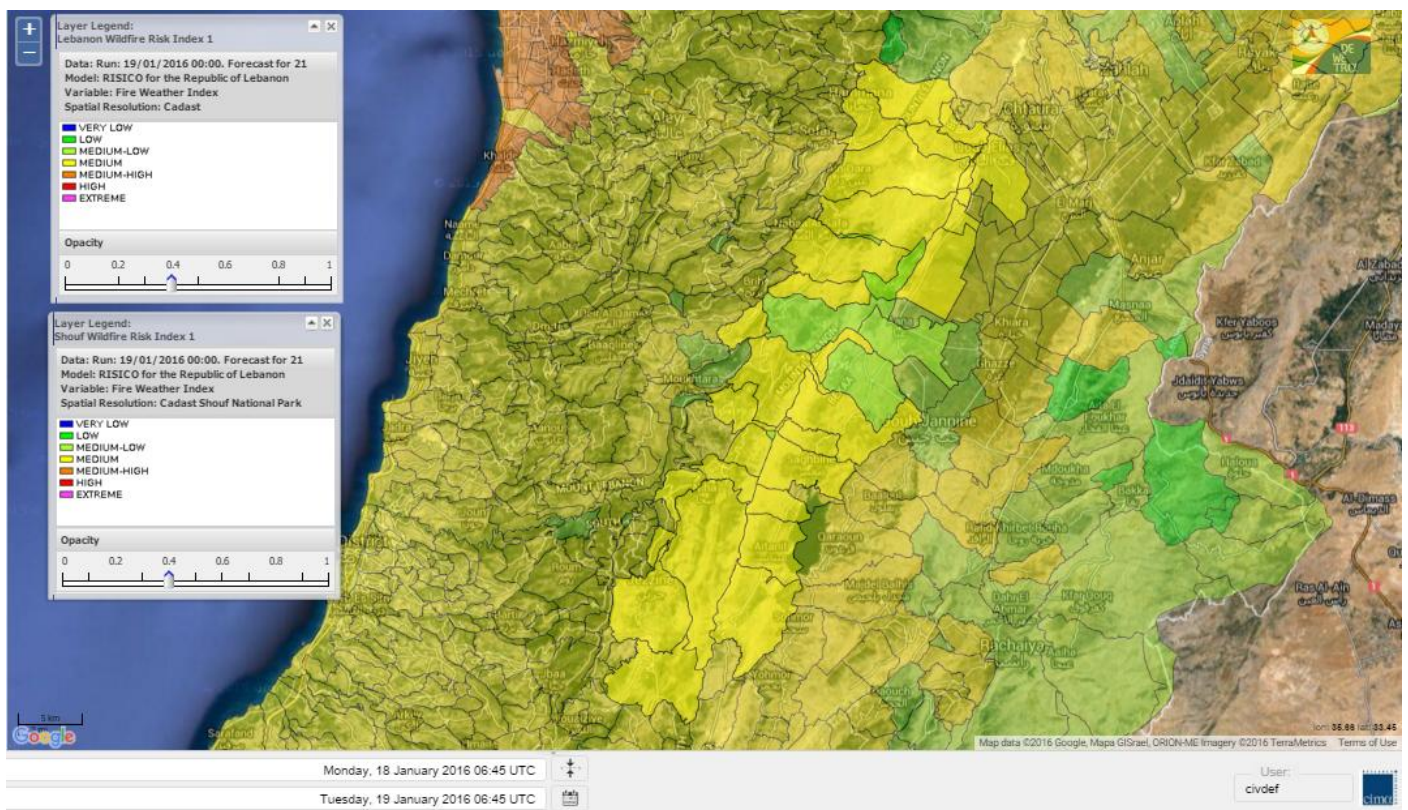




# Shouf Biosphere Reserve Forecast for 20 January 2016

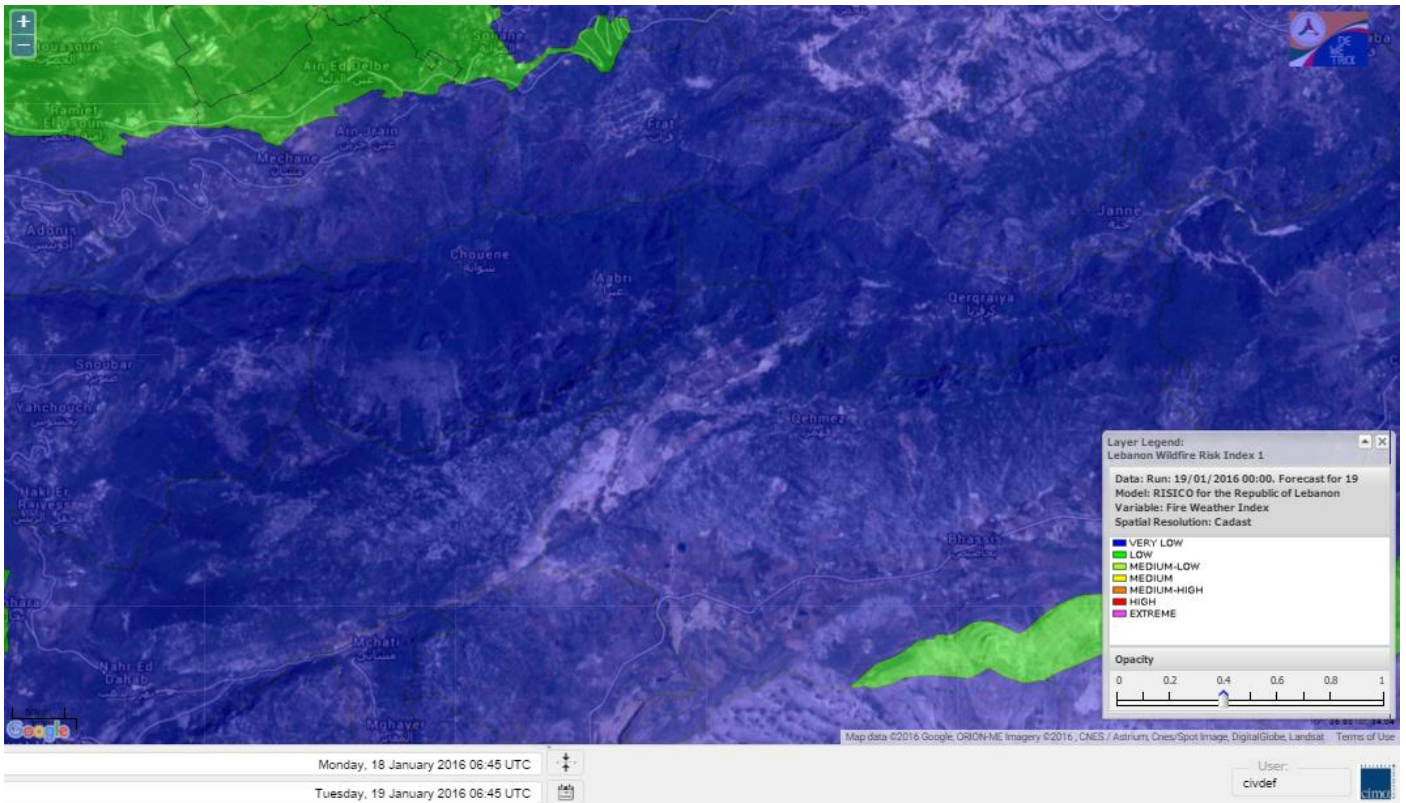


# Shouf Biosphere Reserve Forecast for 21 January 2016

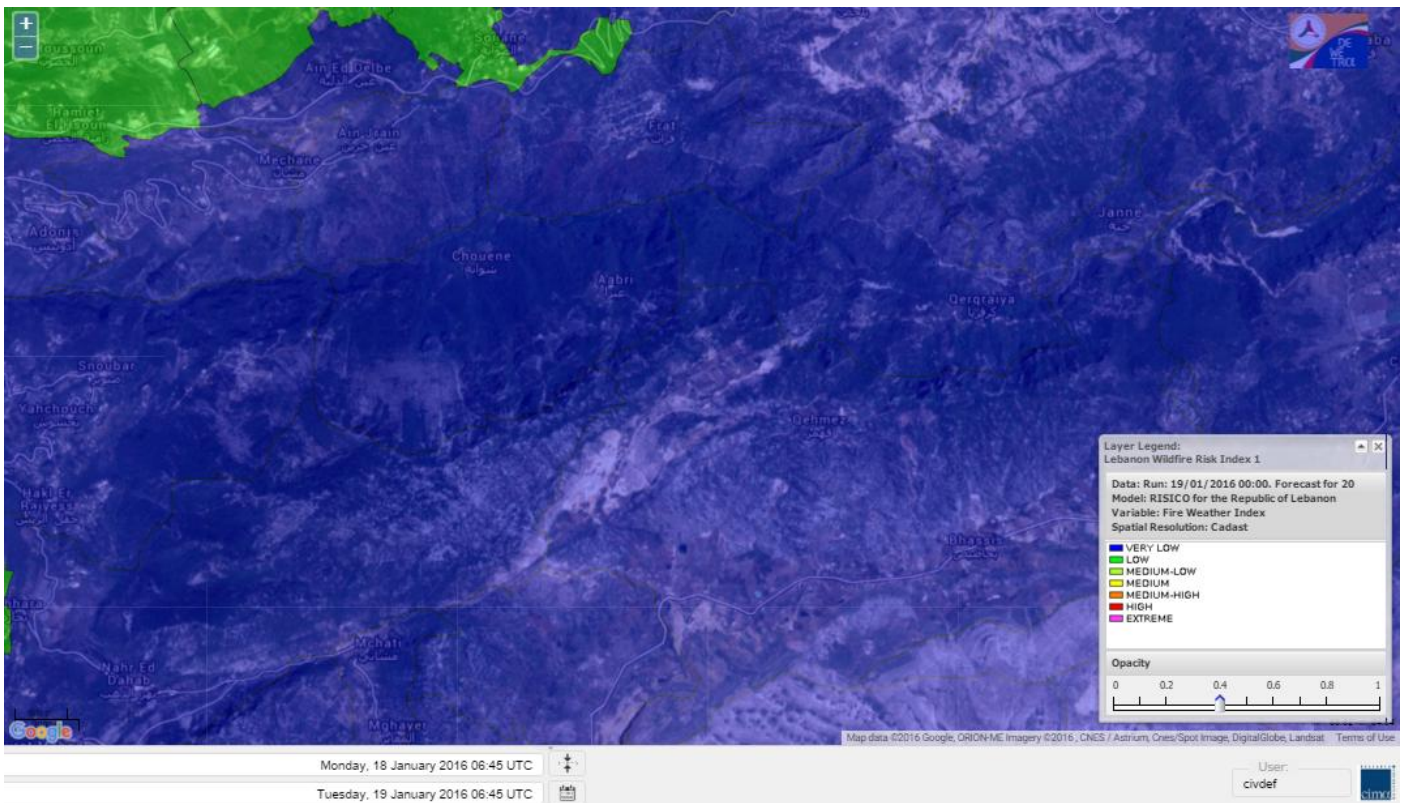




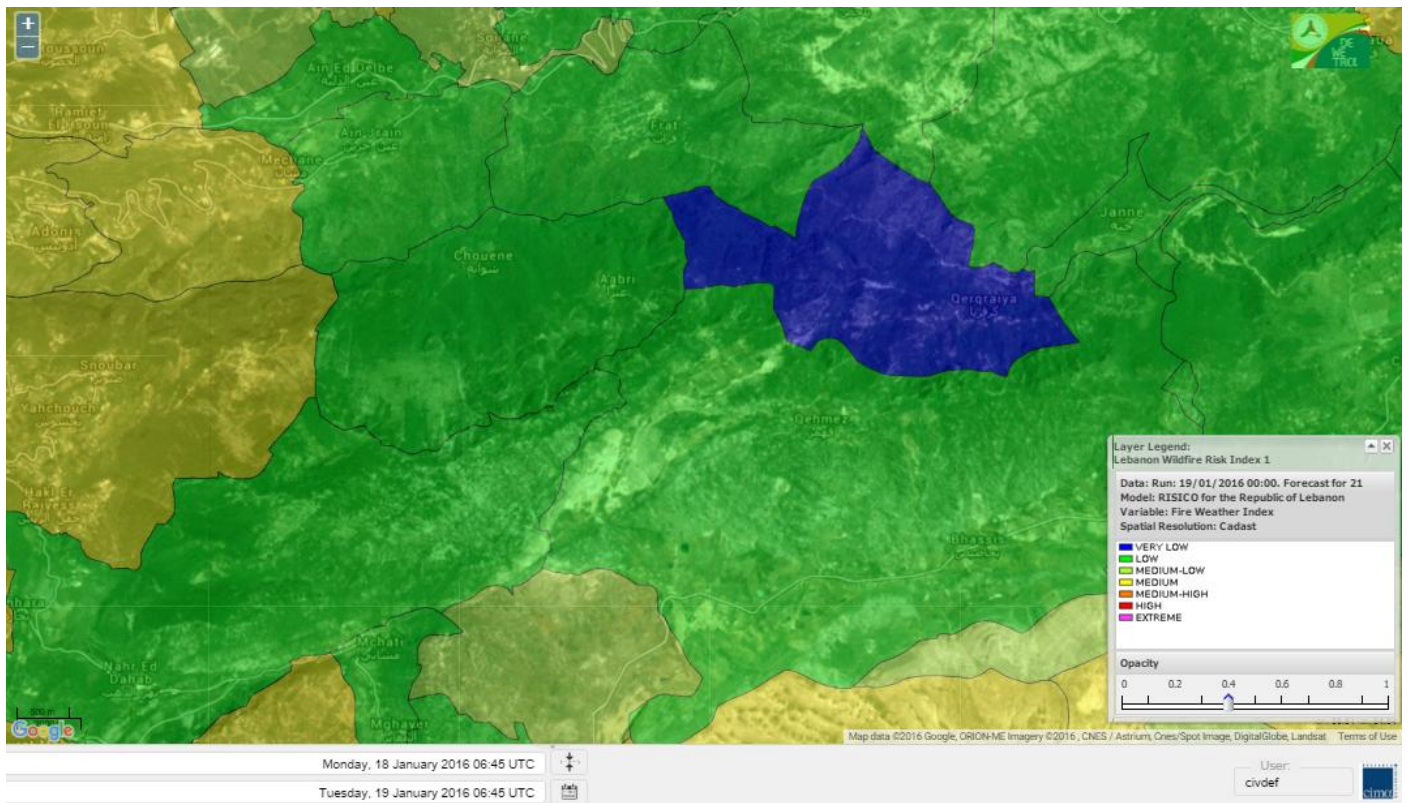
# Jabal Moussa Reserve Forecast for 19 January 2016



# Jabal Moussa Reserve Forecast for 20 January 2016



# Jabal Moussa Reserve Forecast for 21 January 2016





## Nord

### Koura

Municipality	19-Jan	20-Jan	21-Jan	Municipality	19-Jan	20-Jan	21-Jan	Municipality	19-Jan	20-Jan	21-Jan
Aaba	ML	M	M	Afsaddiq	M	M	M	Ain Ekrine	ML	M	M
Amioun	ML	M	M	Anfeh	M	M	M	Badbhoun	M	M	M
Barghoun	M	M	M	Barsa	ML	M	M	Batroumine	M	M	M
Bdebba	ML	M	M	Bechmizine	M	M	M	Bednayel El-Koura	ML	M	M
Bhabbouch El-Koura	L	M	M	Bkeftine	ML	M	M	Bnehran	L	ML	M
Bqaiia El-Koura	ML	M	M	Bsarma	ML	M	M	Btaaboura	M	M	M
Bttram	M	M	M	Btouratij	M	M	M	Bziza	L	M	M
Dar Beehtar	M	M	M	Dar Chmezzine	M	M	M	Deddeh	M	M	M
Deir El-Balamand	L	M	M	Fih	M	M	M	Hraiche	M	M	M
Ijdaabrine	ML	M	M	Kaftoun	ML	M	M	Kefraya El-Koura	M	M	M
Kfarakka	L	M	M	Kfarhata	ML	M	M	Kfarhazir	M	M	M
Kfarkahel	ML	M	M	Kfarsaroun	L	M	M	Kosba	L	M	M
Mejdel el-Koura	ML	ML	M	Nakhle	ML	M	M	Qalhat	L	M	M
Ras Masqa	M	M	M	Rechdibbine	ML	M	M	Zakroun	M	M	M
Zgharta El-Mtaouile	L	L	M								

### Bcharre

Municipality	19-Jan	20-Jan	21-Jan	Municipality	19-Jan	20-Jan	21-Jan	Municipality	19-Jan	20-Jan	21-Jan
Aabdine	L	L	M	Bane	L	L	M	Barhelioun	L	L	M
Bazouone	VL	VL	ML	Becharre	L	VL	M	Beit Menzer	L	L	M
Billa	L	L	M	Blaouza	L	L	M	Bqaa Kafra	VL	VL	M
Bqerqacha	VL	VL	ML	Breissat	L	L	ML	Dimane	L	L	ML
Hadath El Jobbeh	L	L	ML	Hadchit	VL	VL	M	Hasroun	VL	VL	ML
Mazraat Aassaf	VL	VL	L	Mazraat Bani Saab	L	L	L	Mchaa El-Jobbeh	L	VL	M
Metrit	L	L	M	Moghr El-Ahoual	L	ML	M	Ouadi Qannoubine	VL	VL	L
Qanat	L	L	ML	Qnayouer	VL	VL	ML	Tourza	L	L	M

### Batroun

Municipality	19-Jan	20-Jan	21-Jan	Municipality	19-Jan	20-Jan	21-Jan	Municipality	19-Jan	20-Jan	21-Jan
Aabrine	L	M	M	Aalali	L	L	ML	Aartiz	L	L	M
Abdelli	L	M	M	Ajdabra	L	M	M	Assia	L	L	L
Basbina	M	M	M	Batroun	M	M	M	Bcheleh	VL	L	L
Bechtoudar	L	L	L	Beit Chlala	L	L	L	Beit Kassab	VL	L	L
Bijdarfil	M	M	M	Bqesmaya	L	ML	M	Chatine	VL	VL	ML
Chebtein	L	L	M	Chekka	M	M	M	Daael	L	L	L
Dahr Abi Yaghi	L	ML	M	Daraya El-Batroun	ML	M	M	Deir Billa	L	L	M
Deir Kfifane	M	M	M	Deir Mar Youhanna EL	L	L	L	Deir Mar Youssef Jra	L	M	M
Douma	VL	L	ML	Douq	L	L	M	Eddeh El-Batroun	ML	M	M
Ftihat El-Batroun	L	L	L	Ghouma	ML	M	M	Hadtoun	L	L	L
Hamat	ML	M	M	Harbouna	L	L	M	Hardine	VL	L	L
Helta	L	L	L	Hery	M	M	M	Jebba	L	L	ML
Jrabta El-Batroun	ML	M	M	Jrane El-Batroun	M	M	M	Kfar Aabida	ML	M	M
Kfar Halda	L	L	L	Kfarb Shlaimane	L	L	L	Kfarhatna	L	L	M
Kfarhay	ML	M	M	Kfarhelos	L	M	M	Kfifane	M	M	M



Kfour El Arabi	L	L	ML	Koubba	M	M	M	Kour	L	M	M
Mar Mama	VL	L	L	Masrah	VL	L	M	Mehmarch	L	L	ML
Mrah Chdid	ML	M	M	Mrah El Ziyat	ML	M	M	Mrah El-Hajj	L	L	L
Nahle El-Batroun	L	L	ML	Niha El-Batroun	L	L	ML	Ouahj El-Hajjar	ML	M	M
Ouata Houb	VL	VL	L	Qatnaaoun	ML	M	M	Racha	L	L	ML
Rachana	ML	M	M	Rachkida	ML	M	M	Ram El-Batroun	L	L	L
Ras Nahnach	ML	M	M	Selaata	M	M	M	Sghar	ML	M	M
Smar Jbayl	ML	M	M	Sourat El-Batroun	L	L	ML	Tannourine El-Faouqa	L	VL	ML
Tannourine Et-Tahta	VL	VL	L	Thoum	ML	M	M	Toula El-Batroun	L	ML	M
Zan	L	ML	M								

## Zgharta

Municipality	19-Jan	20-Jan	21-Jan	Municipality	19-Jan	20-Jan	21-Jan	Municipality	19-Jan	20-Jan	21-Jan
Aachach	M	M	M	Aalma	M	M	M	Aarde	ML	M	M
Aintourine	L	L	M	Arabet Qozhaya	L	L	M	Arde	ML	M	M
Arjis	L	M	M	Asnoun	L	ML	M	Ayto	L	L	M
Basloukit	VL	L	M	Bchannine	ML	M	M	Besebeel	ML	M	M
Bhairret Toula	VL	VL	M	Bnachee	L	L	M	Boussit	M	M	M
Danha	ML	M	M	Daraiya Zgharta	L	M	M	Deir Jdeide	L	M	M
Ehden	L	L	M	Halan	M	M	M	Hariq Zgharta	L	ML	M
Houakir	L	L	M	Hraiqis	M	M	M	Iaal	L	ML	M
Ijbaa	L	L	M	Karm Saddeh	L	L	M	Kfarchakhna	ML	M	M
Kfardlaqous	ML	M	M	Kfarfou	L	ML	M	Kfarhata Zgharta	L	ML	M
Kfarhoura	L	M	M	Kfarsghab	L	L	M	Kfaryachit	L	ML	M
Kfarzaina	L	M	M	Khaldiye	L	ML	M	Mazraat Ajbeaa	L	M	M
Mazraat Et-Teffah	VL	L	M	Mazraat Jneid	L	ML	M	Mejdlaiya Zgharta	M	M	M
Merh Kfarsghab	L	ML	M	Miryata	M	M	M	Miziara	L	L	M
Mzraat Kefraya	M	M	M	Qorah Bach	L	ML	M	Rachiine	ML	M	M
Ras Kifa	L	ML	M	Sakhra	L	ML	M	Sebhel Zgharta	L	L	M
Serhel	VL	L	ML	Tallet Zgharta	ML	M	M	Toula Zgharta	VL	L	M
Zgharta	ML	M	M								

## Minieh-Denniye

Municipality	19-Jan	20-Jan	21-Jan	Municipality	19-Jan	20-Jan	21-Jan	Municipality	19-Jan	20-Jan	21-Jan
Aasaymout	VL	VL	ML	Aaymar	VL	L	M	Aazki	L	ML	M
Ain El-Tineh-Miniyeh	VL	VL	M	Assoun	L	L	M	Bakhaaoun	L	L	M
Bchennata	VL	L	M	Bechehhara	L	L	M	Beddawi	M	M	M
Behouaita	VL	L	M	Beit El Foqss	VL	L	M	Beit Haouik	L	ML	M
Beit Zoud	L	L	M	Bekaasafrine	VL	L	M	Borj El Yahoudiyeh	M	M	M
Bqarsouna	VL	VL	M	Btermaz	VL	L	M	Debaael	VL	L	M
Deir Ammar	M	M	M	Deir Nbouh	L	L	M	Haouaret-Miniyeh	L	L	M
Haql el Azimeh	L	L	M	Harf El Siyad	L	L	ML	Hazmiye-Miniyeh	VL	VL	ML
Izal	L	L	M	Jarjour	VL	L	ML	Jayroun	VL	VL	M
Kahf El-Malloul	L	L	M	Karm El-Moher	VL	L	M	Kfar Binine	VL	L	M
Kfarchalane	L	ML	M	Kfarhabou	L	M	M	Kharroub-Miniyeh	L	ML	M
Mazraat El-Kreme	VL	L	ML	Mazraat Ketrane	VL	L	M	Merkebta	M	M	M
Minyeh	M	M	M	Mrah El Sfirat	VL	VL	M	Mrah Sraj	L	L	M
Mrebbine	VL	L	M	Nabi Youcheaa	M	M	M	Nemrine	VL	L	M

Qarhaiya	L	L	M	Qarne	VL	VL	ML	Qarsita	VL	VL	ML
Qattineh-Miniyeh	VL	VL	L	Qemmamine	VL	VL	ML	Qraine	VL	L	M
Raouda-Aadoua	ML	M	M	Rihaniyet-Miniyeh	M	M	M	Sfireh	VL	L	M
Sir Ed-Danniyeh	VL	L	M	Tarane	L	L	M	Terbol-Miniyeh	M	M	M
Zaghartaghriine	L	L	M	Zouq Bhannine	M	M	M				

## Nabatiye

### Nabatiye

Municipality	19-Jan	20-Jan	21-Jan	Municipality	19-Jan	20-Jan	21-Jan	Municipality	19-Jan	20-Jan	21-Jan
Aabba	L	M	M	Aazzi	L	ML	M	Adchit El-Chqif	L	M	M
Ain Bou Swar	L	L	M	Ain Kana	L	ML	M	Ali El-Tahter	L	L	M
Ansar	ML	M	M	Arab Salim	L	ML	M	Arnoun	L	L	M
Bfaroue	L	M	M	Breyqaah	L	M	M	Charqiyeh	L	M	M
Choukine	L	ML	M	Deir El Zahrani	L	M	M	Doueir El-Nabatiyeh	L	M	M
Habbouch El-Nabatiye	L	M	M	Hamra El-Nabatiyeh	L	ML	M	Harouf El-Nabatiyeh	L	M	M
Hmaïle	L	ML	M	Houmin El Faouqa	L	ML	M	Houmin El Tahta	ML	M	M
Jarjough	L	L	M	Jbaah El-Nabatiyeh	L	L	M	Jebchit	L	M	M
Kfar Djal El-Nabatiy	L	M	M	Kfar Remmane	L	L	M	Kfar Sir	L	M	M
Kfar Tebnit	L	ML	M	Kfarfila	L	M	M	Kfour El-Nabatieh	L	M	M
Mayfadoun	L	ML	M	Mazraat Bsaffour	L	M	M	Mazraat Chalbaal	L	M	M
Mazraat Dmoul	L	M	M	Mazraat El Khreibeh	L	M	M	Mazraat El-Bayad El-	L	M	M
Mazraat Kfarjaouz	L	ML	M	Mazraat Qalaat Meiss	L	M	M	Nabatiyeh El-Fawka	L	ML	M
Nabatiyeh Et-Tahta	L	ML	M	Namiriyeh	L	M	M	Qaaqaaiyet El Jisr	L	ML	M
Qossaibeh El-Nabatiy	L	M	M	Roumine	L	M	M	Sarba El-Nabatieh	L	M	M
Sir El-Gharbiyeh	L	M	M	Toul	L	ML	M	Yehmor El-Nabatiyeh	L	ML	M
Zaoutar El Charqiyeh	L	ML	M	Zaoutar El-Gharbiyeh	L	ML	M	Zebdine El-Nabatiyeh	L	ML	M
Zefta	L	M	M								

### Hasbaiya

Municipality	19-Jan	20-Jan	21-Jan	Municipality	19-Jan	20-Jan	21-Jan	Municipality	19-Jan	20-Jan	21-Jan
Aain Jarfa	L	L	M	Abou Qamha	L	L	M	Ain Qania	L	L	M
Bourghos	L	L	M	Chebaa	L	L	M	Chouaya Hasbaya	L	L	M
Dellafeh	L	L	M	Fardiss Hasbaiya	L	L	M	Hasbaya	L	L	M
Hbariyeh	L	L	M	Kaoukaba Hasbaiya	L	L	M	Kfar Chouba	L	L	M
Kfar Hamam	L	L	M	Kfeir El-Zait	L	L	M	Khalwat Hasbaya	L	L	ML
Khreibet Hasbaiya	L	L	M	Majidiyeh Hasbaiya	L	L	M	Marj Ez-Zhour (Haouc	L	L	M
Meri	L	L	M	Mimass	L	L	M	Rachaiya El-Fokhar	L	L	M
Salaiyeb	L	L	M								

### Marjayoun

Municipality	19-Jan	20-Jan	21-Jan	Municipality	19-Jan	20-Jan	21-Jan	Municipality	19-Jan	20-Jan	21-Jan
Aalmane Marjaayoun	L	L	M	Aamra	L	ML	M	Adayseh Marjaayoun	L	ML	M
Adchit El-Koussair	L	L	M	Ain Aarab Marjaayoun	VL	L	M	Bani Haiyann	L	L	M
Blatt Marjaayoun	L	L	M	Blida	ML	M	M	Borj El-Moulouk	L	L	M
Boueyda Marjaayoun	L	L	M	Deir Mimass	L	L	M	Deir Siriane	L	ML	M
Dibbine	L	L	M	Ebel El Saqi	L	L	M	Houla	L	ML	M
Houra	L	L	M	Kfar Kila	L	L	M	Khiam Marjaayoun	L	L	M



Klayaa	L	L	M	Majdel Selem	L	L	M	Marjaayoun	L	L	M
Markaba	L	L	M	Mays El-Jabal	ML	ML	M	Mazraat Doumiat	L	ML	M
Mazraat Sarada	VL	L	M	Mhaibib	ML	ML	M	Qabrikha	L	L	M
Qantara	L	L	M	Rab El-Thalathine	L	L	M	Saouaneh Marjayoun	L	L	M
Talloussa	L	L	M	Taybeh Matjaayoun	L	L	M	Touline	L	L	M

## Bent Jbail

Municipality	19-Jan	20-Jan	21-Jan	Municipality	19-Jan	20-Jan	21-Jan	Municipality	19-Jan	20-Jan	21-Jan
Ain-Ebel	L	L	M	Aitaroun	L	M	M	Aynata Bint Jbeil	L	ML	M
Ayta El-Chaeb	L	ML	M	Ayta El-Jabal	L	ML	M	Beit Lif	L	L	M
Beit Yahoun	L	ML	M	Bint Jbeil	L	ML	M	Borj Qalaway	L	ML	M
Braachit	L	L	M	Chakra	L	L	M	Debel	L	L	M
Deir Antar	L	ML	M	Froun	L	ML	M	Ghandouriyeh Bint Jb	L	ML	M
Hanine	L	L	M	Hariss	L	ML	M	Hdatha	L	ML	M
Jmeyjme	L	L	M	Kafra Bint Jbeil	L	ML	M	Kfar Dounine	L	ML	M
Khirbet Selm	L	L	M	Kounine	L	ML	M	Maroun El Ras	L	M	M
Qalaway	L	ML	M	Qaouzah	L	L	M	Qatmoun	ML	ML	M
Ramya Bint Jbeil	L	L	M	Rchaf	L	ML	M	Rmeich	L	ML	M
Safad Al Battikh	L	ML	M	Salhaneh	L	L	M	Serbine	ML	M	M
Sultanieh Bint Jbeil	L	ML	M	Tibnine	L	ML	M	Tiri	L	L	M
Yaroun	L	ML	M	Yater	ML	ML	M				

## Mont Liban

### Jbail

Municipality	19-Jan	20-Jan	21-Jan	Municipality	19-Jan	20-Jan	21-Jan	Municipality	19-Jan	20-Jan	21-Jan
Aabeydat	L	ML	M	Aalita	L	L	M	Aamchit	M	M	M
Aarab El-Lahib	VL	VL	M	Aarasta	VL	VL	L	Adonis Jbeil	VL	VL	M
Afqa Jbeil	VL	VL	L	Ain El Delbeh Jbeil	L	VL	L	Ain El-Ghouayba	VL	VL	L
Ain Jrain	VL	VL	L	Ain Kfah	ML	M	M	Almat El Chemaliyat	L	L	L
Almat El-Jenoubiya	VL	VL	L	Aqoura	L	VL	M	Bayzoun	L	L	ML
Bchille Jbeil	L	L	M	Bechtlida	L	L	M	Behdaydat	ML	M	M
Beit Habbaq	ML	M	M	Bejjeh	ML	M	M	Bekhaaz	M	M	M
Berbara Jbeil	M	M	M	Bintael	L	L	M	Birket Hjoula	L	L	M
Blatt Jbeil	ML	ML	M	Boulhos	VL	VL	L	Breyj Jbeil	L	L	M
Chamat	M	M	M	Chikhane	M	M	M	Chmout	L	ML	M
Eddeh Jbeil	M	M	M	Ehmej	VL	VL	L	Fatre	L	L	M
Ferhet	L	L	M	Fghal	L	M	M	Frat	VL	VL	L
Ghabat	VL	VL	ML	Ghalboun	ML	M	M	Gharzouz	M	M	M
Ghofrine	M	M	M	Habil	VL	VL	ML	Halate	ML	ML	M
Haqel	L	L	M	Hbaline	ML	M	M	Hboub	ML	ML	M
Hdeine	VL	VL	ML	Hema Er-Rehban	VL	VL	M	Hema Mar Maroun Aann	VL	VL	M
Hjoula	L	L	M	Hosrayel	M	M	M	Hsarat	ML	M	M
Hsoun	L	L	M	Jaj	VL	L	ML	Janne	VL	VL	L
Jbeil	M	M	M	Jeddeyl Jbeil	M	M	M	Jlisse	L	L	M
Jouret El-Qattine	L	L	M	Kfar Baal Annaya	L	L	M	Kfar Kidde	M	M	M
Kfar Kouas	L	L	M	Kfar Mashoun	M	M	M	Kfoun	L	ML	M

Kharbe Jbeil	L	L	M	Laqlouq	VL	VL	M	Lassa	VL	VL	L
Lehfed	L	L	L	Maad	M	M	M	Mar Sarkis	VL	VL	M
Mastita	M	M	M	Mayfouq	L	L	L	Mazraat El Siyad	VL	VL	M
Mazraat El-Maaden	VL	VL	L	Mechane	VL	VL	M	Mechmech Jbeil	L	L	L
Mehrin	M	ML	M	Mejdel El-Akoura	VL	VL	L	Mghayreh Jbeil	VL	VL	ML
Mounsef	M	M	M	Nahr Ibrahim	M	M	M	Qahmez	VL	VL	L
Qartaba	VL	VL	L	Qartaboun	M	M	MH	Qattara Jbeil	VL	L	L
Qorqraya	VL	VL	VL	Ramout	ML	M	M	Ras Osta	L	L	M
Rihane Jbeil	M	M	M	Sakiet El-Khayt	L	ML	M	Saqi Richmaya	L	L	L
Sebrine	L	L	M	Seraita	VL	VL	L	Souane Jbeil	L	L	ML
Tadmor	VL	VL	ML	Tartej	VL	L	ML	Torzaiya	L	L	M
Yanouh Jbeil	VL	VL	L	Zibidine Jbeil	L	L	M				

## El Metn

Municipality	19-Jan	20-Jan	21-Jan	Municipality	19-Jan	20-Jan	21-Jan	Municipality	19-Jan	20-Jan	21-Jan
Aain El-Qabu	VL	VL	L	Aain El-Qach	L	L	M	Aain El-Teffaha	L	L	M
Aain el-Safssaf El-M	VL	VL	M	Abou Mizane	L	L	M	Ain Aar	ML	M	M
Ain Alaq	L	L	M	Ain El-Kharroube	L	L	M	Ain El-Sendianeh	L	L	M
Ain El-Zeitoune	VL	VL	M	Ain Saadeh	L	ML	M	Aintoura El-Matn	L	VL	M
Amaret Chalhoub	M	M	MH	Antelias	ML	M	MH	Atchaneh	L	ML	M
Ayroun	L	L	M	Baabdat	VL	L	M	Baouchariyeh	M	M	MH
Baskinta	VL	VL	ML	Beit Chabab	L	L	M	Beit El-Chaar	ML	M	M
Beit El-Kekko	ML	M	MH	Beit Mery	L	L	M	Bhersaf	L	L	M
Bikfaya	L	VL	M	Biyakout	ML	M	MH	Bnabil	VL	VL	M
Bourj Hammoud	M	M	MH	Bqennaya	L	M	M	Broummana El-Matn	L	L	M
Bsalim	L	ML	M	Bsifrine	VL	VL	M	Bteghrine	VL	VL	ML
Chaouiye	L	L	M	Chouaya El-Matn	L	L	M	Choueir	L	VL	M
Chrine	VL	VL	M	Dahr El Sawan El-Mat	L	L	M	Daychouniyeh	ML	M	M
Dbayeh	M	M	MH	Deir Chamra	VL	VL	M	Deir Mar Abda el Mch	L	ML	M
Deir Mar Roukouz	M	M	MH	Deir Tamiche	L	ML	M	Dik El-Mehdi	L	M	M
Dikwaneh	M	M	MH	Douar El-Matn	L	L	M	Fanar	ML	M	M
Fraike	L	L	M	Haret El-Ballaneh	ML	M	M	Hbous	ML	M	M
Himlaya	L	VL	M	Jal El Did	M	M	MH	Jdeideh El-Metn	M	M	MH
Jouar El-Matn	L	VL	M	Jouret El-Ballout	L	L	M	Kaaqour	VL	VL	M
Kfar Aaqab	VL	VL	M	Kfertay El-Matn	VL	VL	L	Khenchara	VL	VL	M
Khillat El-Mtain	VL	VL	M	Konnabat Broummana	L	L	M	Konnabat Salima	VL	VL	M
Machraah El-Matn	VL	VL	ML	Majdel Tarchich	L	VL	M	Majzoub	ML	M	M
Mansouriyeh El-Metn	ML	M	MH	Mar Boutros Karm Et-	VL	VL	M	Mar Chaya et Mzekke	L	L	M
Mar Moussa Ed-Douar	VL	VL	M	Marjaba	VL	VL	ML	Masqa	L	L	M
Mayasse	L	VL	M	Mazraat Deir Aoukar	ML	M	M	Mazraat El-Hadirat	ML	M	M
Mazraat Yachouh	ML	M	M	Mchikha	VL	VL	M	Menqlet Mezher	ML	M	M
Mhaydseh Matn	L	VL	M	Mkalles	M	M	MH	Mrouj	VL	VL	M
Mtain	L	VL	M	Mtayleb	L	M	M	Nabay	L	ML	M
Naccache	ML	M	M	Ouadi Chahine	VL	VL	M	Ouadi El-Karm El-Mat	VL	VL	ML
Ouata El-Mrouj	VL	VL	M	Ouyoun El-Matn	VL	L	M	Qornet Chehwan	L	M	M
Qornet El-Hamra	L	ML	M	Roumieh	L	L	M	Sfeilet Bikfaya	VL	VL	M
Sinn El-Fil	M	M	MH	Zabbougha	VL	VL	M	Zalqa	M	M	MH



Zarououn	VL	VL	M	Zekrite	L	ML	M	Zighrine El-Matn	L	L	M
Zouk El-Khrab	M	M	M								

## Chouf

Municipality	19-Jan	20-Jan	21-Jan	Municipality	19-Jan	20-Jan	21-Jan	Municipality	19-Jan	20-Jan	21-Jan
Aalmane El-Chouf	M	M	M	Aammiq El-Chouf	L	L	M	Ain Ouzein	L	L	ML
Ain Qani	L	L	ML	Ain Zhalta	L	L	M	Ainbal	L	L	M
Amatour	L	L	M	Anout	L	L	M	Atrine	L	L	M
Baadarane	L	L	M	Baaqline	L	ML	M	Baasir	M	M	M
Barja	M	M	M	Barouk	L	L	ML	Bater	L	VL	M
Batloun	L	L	M	Bayqoun	L	L	M	Bchetfine	L	L	M
Beiteddine	L	L	M	Benouati Ech-Chouf	L	L	M	Berjein	L	ML	M
Bireh et Mtalleh	L	L	M	Biret El-Chouf	L	L	M	Bkechtine Ouel Mchei	L	L	M
Bkifa El-Chouf	L	ML	M	Botme	L	L	ML	Bqaiaa Ech-Chouf	L	ML	M
Bsaba El-Chouf	L	L	M	Chammis El-Chouf	L	M	M	Chehim	L	ML	M
Chemaarine	L	L	M	Chourit	L	L	ML	Daher El-Chouf	ML	ML	M
Dalhoun	L	ML	M	Damour	M	M	M	Daraya El-Chouf	L	L	M
Deir El-Moukhalles	L	L	M	Deir Baba	L	L	M	Deir Dourit	L	L	M
Deir El-Qamar	L	ML	M	Deir Kouche	L	ML	M	Dibbieh	L	ML	M
Dmit	L	ML	M	Fouara Jaafar	L	L	M	Fraidis El-Chouf	L	L	M
Ghabet Jaafar	L	L	M	Gharife	L	L	M	Haret Jandal	L	VL	M
Hasrout	L	L	M	Jadra	M	M	M	Jahlieh	L	ML	M
Jbeih El-Chouf	L	VL	M	Jdeidet El-Chouf	L	L	M	Jiyeh	M	M	M
Jleilyeh	L	L	M	Jmailiyeh	ML	M	M	Joun	L	ML	M
Kahlounie El-Chouf	L	L	M	Ketermaya	L	M	M	Kfar Faqoud	L	L	M
Kfar Hamal	L	M	M	Kfar Him	L	ML	M	Kfar Katra	L	L	M
Kfar Niss	L	L	M	Kfar hay	L	L	M	Kfarnabrakh	L	L	M
Khirbet Bisri	L	L	M	Knayse El-Chouf	L	L	M	Maaniyeh	L	M	M
Maasser Beiteddine	L	L	M	Maasser El-Chouf	L	L	M	Majdalouna	L	M	M
Majdel El-Meouch	L	L	M	Mazboud	L	M	M	Mazmoura	L	L	M
Mazraat El Chouf	L	L	M	Mazraat El Daher	L	L	M	Mazraat El-Douair	L	L	ML
Mechref	ML	M	M	Mghairie	L	M	M	Mghayrie El-Chouf	L	ML	M
Moukhtara	L	L	M	Mrusti	L	L	M	Mtolle	L	L	M
Naameh	M	M	M	Niha El-Chouf	L	L	M	Ouadi Abou Youssef	VL	L	M
Ouadi Ed-Deir	L	ML	M	Ouadi El-Sit	L	L	M	Ouadi bnehlay	L	L	M
Qraibeh	L	L	M	Qreiaa	VL	L	M	Rmayle El-Chouf	M	M	M
Semqaniyeh	L	L	M	Sibline	M	M	M	Sirjbeil	L	ML	M
Warhanieh	L	L	M	Werdaniyeh	M	M	M	Zaarourieh	L	L	M

## Baabda

Municipality	19-Jan	20-Jan	21-Jan	Municipality	19-Jan	20-Jan	21-Jan	Municipality	19-Jan	20-Jan	21-Jan
Abadiyeh	L	L	M	Ain Mouaffaq	L	L	M	Araiya	L	L	M
Arbaniyeh	VL	VL	M	Arsoun	VL	VL	M	Baabda	M	M	M
Baalchmey	L	L	M	Bmaryam	L	VL	M	Bourj El-Brajneh	M	M	MH
Boutchay	L	M	M	Bsaba Baabda	ML	M	M	Btekhney	VL	VL	M
Btibyat	VL	VL	M	Bzbeddine	VL	VL	M	Chbeniyeh	L	L	M
Chiyah	M	M	MH	Chmeisset Baabda	VL	VL	M	Chouit	L	L	M
Deir El-harf	L	L	M	Deir Khouna	L	L	M	Dlaybeh	VL	VL	M

Falougha	L	L	M	Furn El-Chebbak	M	M	MH	Hadath Beyrouth	M	M	MH
Halaliyeh Baabda	VL	L	M	Hammana	L	L	M	Haret El Sett	L	ML	M
Haret Hamze	L	L	M	Haret Hreik	M	M	MH	Hasbaiya El-Metn	VL	VL	M
Jouar El-Hoz	VL	VL	L	Jouret Arsoun	VL	VL	M	Kfar Chima	M	M	MH
Kfar Selouane	VL	VL	ML	Khalouat Baabda	VL	VL	M	Kneisset Baabda	VL	VL	M
Laylakeh	M	M	MH	Louayzeh Baabda	ML	M	M	Merdache	ML	M	M
Mzairaa Baabda	VL	L	M	Ouadi Chahrour El Ol	L	M	M	Ouadi Chahrour El So	L	ML	M
Qalaa Baabda	L	VL	M	Qhraybe Baabda	L	L	M	Qobbayaa	L	L	M
Qornayel	VL	VL	M	Qortada	VL	L	M	Qrayeh Baabda	L	L	M
Qsaibeh Baabda	VL	L	M	Qtale Baabda	VL	VL	M	Ras El Metn	L	L	M
Ras El-Haref	L	L	M	Rouayset El-Ballout	L	L	M	Salima Baabda	VL	VL	M
Tahouitat El Ghadir	M	M	MH	Tarchich	L	VL	ML	Zandouqa	VL	L	M

## Aley

Municipality	19-Jan	20-Jan	21-Jan	Municipality	19-Jan	20-Jan	21-Jan	Municipality	19-Jan	20-Jan	21-Jan
Abey	L	ML	M	Aghmid	L	L	M	Ain Dara	L	L	M
Ain Drafil	L	M	M	Ain El Halazoun	L	L	M	Ain El-Rmmaneh	L	L	M
Ain Jedideh	L	L	M	Ain Ksour	L	ML	M	Ain Onoub	L	ML	M
Ain Traz	L	L	M	Ainab	L	ML	M	Aley	L	L	M
Aramoun	ML	M	M	Aytat	L	M	M	Azouniyeh	L	L	M
Baawerta	ML	M	M	Badghan Oua Wadi Bad	L	L	M	Bassatine	L	ML	M
Bayssour	L	ML	M	Bchamoun	L	M	M	Bdadoun	L	ML	M
Behouara	L	L	M	Bennay	L	ML	M	Bhamdoun El-Dayaa	L	L	M
Bhamdoun El-Mhatta	L	L	M	Bkhechtey	L	L	M	Bleibel	L	ML	M
Bmakine	L	M	M	Bmehray	L	L	M	Bouzrid	L	L	M
Bserrine	L	L	M	Bsous	L	L	M	Btalloun	L	L	M
Btater	L	L	M	Chanay	L	L	M	Charoun	L	L	M
Chartoun	L	L	M	Chemlane	L	ML	M	Choueifat El-Aamrous	M	M	MH
Choueifat El-Oumara	M	M	M	Choueifat El-Quoubbe	M	M	MH	Dakkoun	L	M	M
Deir Qoubel	L	M	M	Dfoun	L	M	M	Douair El Remmaneh	L	L	M
Ghaboun	L	L	M	Habramoun	L	L	M	Homs Oua Hama	L	L	M
Houmal	L	ML	M	Jisr El Qadi	L	ML	M	Kehaleh	L	L	M
Keyfoun	M	M	M	Kfar Aamey	L	L	M	Kommatyeh	L	ML	M
Maasrati	L	L	M	Majdel Baana	L	L	M	Mansourieh et Ain El	L	L	M
Mazraat El-Nahr	L	L	M	Mchakhte	L	L	M	Mecherfeh	L	L	M
Mejdlaya	L	ML	M	Mrayjat	L	L	M	Ramliyah	L	L	M
Rechmaya	L	L	M	Rejmeh	L	L	M	Remhala	L	ML	M
Rouaysset El Neemane	L	L	M	Saoufar	L	L	M	Selfaya	L	L	M
Sirhmoul	L	ML	M	Souq El Ghareb	L	M	M	Taazanieh	L	L	M

## Kesrouane

Municipality	19-Jan	20-Jan	21-Jan	Municipality	19-Jan	20-Jan	21-Jan	Municipality	19-Jan	20-Jan	21-Jan
Achkout	L	L	M	Adma Oua Dafneh	M	M	M	Ain Ed-Delbe Kesroua	VL	VL	L
Ain El-Rihane	L	M	M	Aintoura Kesrouane	ML	M	M	Ajaltoun	L	L	M
Akaybeh Kesrouane	M	M	MH	Aramoun Kesrouane	L	L	M	Azra ouel Ozor	L	L	M
Ballouneh	L	L	M	Batha	VL	L	M	Bekaatat Achkout	L	L	M
Bekaatat Kanaan	VL	VL	L	Bizhel	VL	L	M	Bouar	M	M	M
Bqaatouta	VL	VL	ML	Bqaq Ed-Dine	M	M	M	Bzommar	L	L	M



Chahtoul	L	L	M	Chnaniir	L	L	M	Chouan	VL	VL	L
Daraya Kesrouane	L	VL	M	Darououn	L	L	M	Deir Baqlouch	L	L	M
Dlebta	VL	VL	M	Eghbeh	VL	VL	ML	Faraya	VL	VL	ML
Fatka	L	L	M	Feytroun	VL	VL	M	Ghazir	L	L	M
Ghbaleh Kesrouane	L	L	M	Ghedrass	L	L	M	Ghosta	VL	L	M
Ghynéh	L	L	M	Harharaya w Kattine	L	L	M	Harissa Kesrouane	L	M	M
Hayata	VL	L	M	Hosein	L	L	M	Hrajel	VL	VL	M
Jdeideh Ghazir	L	L	M	Jeita	L	ML	M	Jounieh Ghadir	ML	M	M
Jounieh Haret Sakhr	M	M	MH	Jounieh Salel Alma	ML	M	M	Jounieh Sarba	M	M	MH
Jouret Bedrane	L	L	M	Jouret Mhad	VL	VL	M	Jouret Termos	L	L	M
Kfar Debiane	VL	VL	ML	Kfar Tay Kesrouane	VL	VL	L	Kfar Yassine	M	M	MH
Kfour Kesrouane	L	L	M	Kharayeb Nahr Ibrahi	L	ML	M	Klayaat Kesrouane	VL	L	M
Maarab	VL	VL	M	Maaysra Kesrouane	L	L	M	Mayrouba	VL	VL	ML
Mazraat Er-Ras	ML	M	M	Mazraat Mrah El-Mir	VL	VL	M	Mchaa El Ftouh	L	VL	ML
Mchaa Faraya	VL	VL	M	Mchaa Kfar Dibiane	L	VL	ML	Mghaer	VL	VL	L
Mradiyah	VL	L	M	Nahr Ed-Dahab	VL	VL	L	Nammoura Kesrouane	L	L	M
Ouata El Jaouz	VL	VL	M	Ouata Sillam	M	M	MH	Raachine	VL	VL	M
Rayfoun	L	L	M	Safra Kesrouane	M	M	M	Shayle Kesrouane	L	L	M
Tabarja	M	M	M	Yahchouch	VL	VL	M	Zaaytreh	L	L	M
Zeytoun	L	L	M	Zouk Mikael	M	M	MH	Zouk Mosbeh	M	M	MH

## Baalbek\_Hermel

### Baalbek

Municipality	19-Jan	20-Jan	21-Jan	Municipality	19-Jan	20-Jan	21-Jan	Municipality	19-Jan	20-Jan	21-Jan
Aadous	M	M	M	Aamchki	L	L	L	Aarsal	ML	M	L
Ain Baalbek	M	M	L	Ain Bourday	ML	ML	M	Ain El-Benye	L	L	ML
Ain El-Jaouz Baalbek	L	L	L	Ain El-Siya Chadoura	L	L	L	Al Khodr Baalbek	M	M	M
Al Nabi Chit	M	M	M	Aynata Baalbek	L	VL	ML	Baalbek	M	M	M
Bachwat	ML	L	L	Barqa	L	VL	L	Bednayel Baalbak	M	L	M
Beit Chama	M	L	M	Bijjaje	M	M	L	Bouday	M	L	ML
Brital	L	ML	M	Btadi	ML	L	ML	Chaat	M	M	L
Chaibe	L	L	L	Chlifa	M	ML	M	Chmestar	M	L	M
Dar El-Oussa	L	VL	L	Deir El-Ahmar	M	ML	ML	Deir Mar Maroun Baal	M	M	M
Douris	M	M	M	Fakiha	M	M	ML	Hadath Baalbek	M	L	M
Ham	VL	L	M	Haour Taala	L	M	M	Hizzine	M	M	M
Hlebta	L	L	M	Hosh Barada	M	M	M	Hosh El Dahab	M	M	M
Hosh El Snid	M	M	M	Hosh El-Nabi	M	M	M	Hosh El-Rafiq	M	M	M
Hosh Tal Safiya	M	M	M	Hrebta	M	M	L	laat	M	M	M
Jebaa	M	L	M	Jenta	L	ML	M	Kfar Dabach	M	M	M
Kfar Dane	M	M	M	Khraibeh El-Hermel	M	M	L	Khreibet Baalbek	L	L	M
Kneisset Baalbek	M	M	M	Labueh	M	M	L	Maarboun	L	L	M
Majdaloun	M	M	M	Maqneh	M	M	M	Mazraat Beit Mcheik	L	VL	M
Misraya	M	M	M	Mograq	M	M	L	Nabha El-Damdoum	ML	L	M
Nabi Chbay	L	L	M	Nabi Osman	M	M	L	Nahleh baalbek	L	ML	L
Ouadi El-Oss	L	L	L	Qaa Baayoun	M	M	M	Qaa Jouar Maqiye	H	M	M
Qaa Ouadi El-Khanzir	H	M	M	Qah Baalbek	MH	M	M	Qarha Baalbek	M	M	M

Qsarnaba	M	L	M	Ram Baalbek	ML	L	L	Ras Baalbek El Sahl	M	M	M
Ras Baalbek El-Charq	M	M	M	Riha	M	M	ML	Saaide	M	ML	M
Sboubba	M	M	L	Seriine El-Tahta	M	M	M	Slouqi	L	L	ML
Taiba Baalbek	M	M	M	Talia	M	M	M	Taraiya	M	L	M
Temnin El Fawqa	M	L	M	Temnin El-Tahta	M	L	M	Tfail	L	L	VL
Yahfoufa	L	L	M	Yammouneh	L	VL	ML	Younine	M	M	L
Zboud	M	M	L								

## Hermel

Municipality	19-Jan	20-Jan	21-Jan	Municipality	19-Jan	20-Jan	21-Jan	Municipality	19-Jan	20-Jan	21-Jan
Charbine El-Hermel	L	L	ML	Hermel Jbab	L	L	M	Hermel	M	M	M
Maaysra El-Hermel	L	ML	M	Michaa Mrajhine	L	L	M	Ouadi Faara	L	L	M
Ras Baalbek - Ouadi	M	M	M	Ras Baalbek El Gharb	L	ML	M	Zighrine	L	L	M

## Akkar

### Akkar

Municipality	19-Jan	20-Jan	21-Jan	Municipality	19-Jan	20-Jan	21-Jan	Municipality	19-Jan	20-Jan	21-Jan
Aain Tinta	ML	M	M	Aaiyat	L	ML	M	Aakkar El-Aatiqa	L	L	M
Aamar Akkar	M	M	M	Aamar El Baykat	M	M	M	Aamayer	M	M	M
Aamriyet Akkar	ML	M	M	Aandqet	L	ML	ML	Aarmeh	ML	ML	M
Aarqa	M	M	M	Aawaynat	L	M	M	Aayoun Akkar	L	M	M
Abboudiye	M	M	M	Ain El-Zeit	ML	M	M	Ain Yaaqoub	L	L	M
Akroum	ML	ML	M	Aridet Cheikh Zennad	M	M	M	Baldeh w Mazraat Bal	L	M	M
Barcha	M	M	M	Bardeh	ML	M	M	Bebnine	M	M	M
Beino	L	M	M	Beit Ayoub	L	M	M	Beit El-Haouch	M	M	M
Beit Mellat	L	M	M	Beit Younes	L	L	M	Berbara Akkar	L	M	M
Berqayel	ML	M	M	Bezbina	L	L	M	Bireh Akkar	ML	M	M
Borj	L	M	M	Bqerezla	ML	M	M	Bzal	L	ML	M
Chane	L	L	M	Chaqdouf	L	ML	M	Charbila	ML	M	M
Cheikh Mohammad	M	M	M	Cheikh Taba Es-Sahl	M	M	M	Cheikh Taba	ML	M	M
Cheikh Zennad	M	M	M	Cheikhlar	L	M	M	Chir Hmairine	M	M	M
Daghle	L	M	M	Dahr Laissine	L	M	M	Darine	M	M	M
Dawra	L	L	M	Dawsa w Baghdadi	M	M	M	Dayret Nahr El-Kabir	L	M	M
Deir Dalloum	M	M	M	Deir Jennine	L	M	M	Denbou	L	ML	M
Dibbabiyyeh	ML	M	M	Douair Aadwiyeh	L	M	M	Fassikine	L	M	M
Fnaydek	L	L	M	Fraydes Akkar	ML	M	M	Ghazayle	M	M	M
Habchit	L	L	M	Hakour	M	M	M	Halba	M	M	M
Haouchab	M	M	M	Hayssat	M	M	M	Haytla	M	M	M
Hayzouq	L	M	M	Hedd	L	M	M	Hmaira Akkar	ML	M	M
Hmaiss Akkar	L	M	M	Hnaider	M	M	M	Hokr Ed-Dahri	M	M	M
Hokr Etti	M	M	M	Hokr Jouret Srar	M	M	M	Houaich	L	ML	M
Hrar	L	L	M	Idbil	M	M	M	Ilal	ML	M	M
Janine	M	M	M	Jdeidet El-JoumeH	M	M	M	Jdeidet El-Kaiteh	ML	M	M
Jebayel	L	M	M	Kafr	ML	M	M	Kafr	M	M	M
Karm Asfour	ML	M	M	Kfar Melki Akkar	M	M	M	Kfar Noun	L	M	M
Kfarharra	L	M	M	Khalsa	L	M	M	Kharnoubet Akkar	M	M	M

Khirbet Daoud Aakkar	ML	M	M	Khirbet El Remmane	L	M	M	Khirbet Shar	L	ML	M
Khoreybet El-Jindi	M	M	M	Khreibet Aakkar	L	ML	M	Kneisset Aakkar	M	M	M
Kneisset Hnaider	M	M	M	Knisse	L	M	M	Kroum El-Aarab	M	M	M
Kwachra	M	M	M	Kweykhat	M	M	M	Machta Hammoud	L	M	M
Majdala	ML	M	M	Majdel Akkar	L	ML	M	Mar Touma	M	M	M
Marlaya Melhem	M	M	M	Mashha	ML	M	M	Massoudiye	M	M	M
Mazraat Beit Ghattas	M	M	M	Mazraat En-Nahriye	L	M	M	Mechmech	VL	L	M
Memneh	L	L	L	Mhammara	M	M	M	Mighraq Aakkar	M	M	M
Minyara	M	M	M	Moqayteh	M	M	M	Mounjez	ML	M	M
Msalla	M	M	M	Mzeihmeh	M	M	M	Nfaiseh	M	M	M
Noura Et-Tahta	ML	M	M	Ouadi El-Haour	M	M	M	Ouadi El-Jamous	M	M	M
Ouyoun El-Ghizlane	ML	M	M	Qaabarine	M	M	M	Qabaait	L	L	M
Qachlaq	M	M	M	Qantara Aakkar	M	M	M	Qarha Aakkar	M	M	M
Qarqaf	M	M	M	Qboula	L	M	M	Qleiaat Aakkar	M	M	M
Qloud El-Baqie	ML	M	M	Qobaiyat Aakkar	L	L	M	Qobbat Chamrat	M	M	M
Qorayat	L	L	M	Qornet Aakkar	L	ML	M	Qsair Aakkar	ML	M	M
Rahbe	L	ML	M	Rihaniyet Aakkar	ML	M	M	Rmah	L	M	M
Rmoul	M	M	M	Saadine	M	M	M	Sadaqa	L	M	M
Saidnaya	M	M	M	Sammouniye	M	M	M	Sayssouq	M	M	M
Semmaqiye	M	M	M	Semmaqli	M	M	M	Sfinet El-Dreib	ML	M	M
Sfinet El-Qaitaa	L	ML	M	Sindyanet Zeidane	L	ML	M	Souaisset Aakkar	L	M	M
Srar	M	M	M	Tal Abbas El Gharby	M	M	M	Tal Abbas El-Charqy	M	M	M
Tal Biret	M	M	M	Tal Hmayra	M	M	M	Tal Maayan Tal Kiri	M	M	M
Tal Sibel	M	M	M	Tallet Chattaha	L	M	M	Tikrit	L	M	M
Tleil	M	M	M	Tshea	L	L	M	Zawarib	M	M	M
Zouq El Hosniyeh	ML	M	M	Zouq El-Haddara	M	M	M	Zouq El-Hbalsa	ML	M	M
Zouq El-Mogachrine	ML	M	M								

## Sud

### Sour

Municipality	19-Jan	20-Jan	21-Jan	Municipality	19-Jan	20-Jan	21-Jan	Municipality	19-Jan	20-Jan	21-Jan
Aaiyeh	M	M	M	Aalma El-Chaab	L	M	M	Aaytit	ML	M	M
Abbassiyeh Sour	M	M	M	Abou Chech	ML	M	M	Ain Abou Abdallah	M	M	M
Ain Baal	M	M	M	Arzoun	L	ML	M	Aziyeh	L	ML	M
Baflaya	ML	ML	M	Barich	ML	M	M	Batouliyah	M	M	M
Bayad	ML	M	M	Bazouriyeh	M	M	M	Bediass	L	M	M
Bestiyat	L	M	M	Borj El Chemali	M	M	M	Borj En-Naqoura	M	M	M
Borj Rahhal	M	M	M	Boustane	L	M	M	Btaychiyah	ML	M	M
Chaaitiye	M	M	M	Chameh	ML	M	M	Chehabiye	L	ML	M
Chehour	L	L	M	Chihine	ML	ML	M	Debaal Sour	ML	M	M
Deir Amess	L	ML	M	Deir Kifa	L	ML	M	Deir Qanoun El-Ain	M	M	M
Deir Qanoun El-Naher	L	M	M	Derdghaiya	L	M	M	Dhayra	L	ML	M
Halloussiyeh	L	M	M	Hamoul	L	M	M	Hanaouey	M	M	M
Henniye	M	M	M	Hmairi Sour	L	M	M	Iskandarouna Sour	ML	M	M
Jbal El Botom	ML	ML	M	Jebbin	ML	M	M	Jennata	ML	M	M
Jijim	L	M	M	Jouaiya	ML	M	M	Kneisset Sour	M	M	M



Maarake	ML	M	M	Maaroub	ML	M	M	Majadel	L	M	M
Majdalzoun	ML	M	M	Mansouri Sour	M	M	M	Marnba	L	L	M
Marouahine	L	ML	M	Mazraat El-Zalloutiy	ML	M	M	Mazraat Mechref	ML	M	M
Mazraat Tayr Semhat	L	L	ML	Mheilib	M	M	M	Neffakhiyeh	L	ML	M
Niha Sour	L	ML	M	Ouadi Jilo	ML	M	M	Qana	ML	M	M
Qolaileh Sour	M	M	M	Rechknayan	ML	M	M	Rmadiyah	M	M	M
Selha Sour	L	L	M	Siddiqine	M	M	M	Sour	M	M	M
Srifa	L	ML	M	Tayr Debbe	M	M	M	Tayr Felsay	L	M	M
Tayr Harfa	ML	M	M	Touayri	L	L	M	Toura	L	M	M
Yanouh Sour	ML	M	M	Yarine	ML	M	M	Zebqine	L	L	M

## Saida

Municipality	19-Jan	20-Jan	21-Jan	Municipality	19-Jan	20-Jan	21-Jan	Municipality	19-Jan	20-Jan	21-Jan
Aanqoun	ML	M	M	Aaqtanit	ML	M	M	Aarab Ej-Jall	L	M	M
Aarab Tabbaya	L	M	M	Abra Saida	M	M	M	Adloun	M	M	M
Adousiyeh	M	M	M	Ain-El-Deleb	M	M	M	Arzai	ML	M	M
Babliyah	M	M	M	Barty	L	M	M	Bissariyeh	M	M	M
Bnaafoul	ML	M	M	Bqosta	ML	M	M	Bramiy	ML	M	M
Daoudiyeh	M	M	M	Dareb El-Sim	ML	M	M	Erkay	L	M	M
Ghassanieh	M	M	M	Ghazieh	M	M	M	Hajjeh	ML	M	M
Haret Saida	M	M	M	Hartiyeh	M	M	M	Hlaliye Saida	ML	M	M
Insariyat	M	M	M	Jazira Saida	M	M	M	Kafar Bit	L	M	M
Kaoutariyet El-Siyad	L	M	M	Kfar Chellal	L	M	M	Kfar Hatta Saida	L	M	M
Kfar Milke Saida	L	M	M	Khartoum	ML	M	M	Khaziz	L	M	M
Khirbet Ed-Douair Sa	M	M	M	Khirbet El-Bassal	ML	M	M	Khrayeb Saida	ML	M	M
Loubieh	M	M	M	Maghdouche	ML	M	M	Majdelyoun	M	M	M
Matariyet El-Choumar	M	M	M	Matayriyeh	ML	M	M	Mazraat 'Mseileh	M	M	M
Mazraat 'Snaiber	M	M	M	Mazraat Aarab Soukka	L	M	M	Mazraat Deir Taqla	ML	M	M
Mazraat El Yahoudiye	M	M	M	Mazraat El-Housseini	M	M	M	Mazraat El-Mhaydaleh	ML	M	M
Mazraat El-Ouasta	M	M	M	Mazraat Jamjim	M	M	M	Mazraat Kaoutariyet	ML	M	M
Mazraat Kfar Badda	M	M	M	Mazraat Oussamiyat	ML	M	M	Mazraat Sari	M	M	M
Mazraat Sinai	ML	M	M	Meemariyeh	ML	M	M	Merouaniyeh	ML	M	M
Miyeh ou Miyeh	M	M	M	Najjariyeh	M	M	M	Qaaqaiyat El-Snaouba	M	M	M
Qnarit	ML	M	M	Qraiye Saida	ML	M	M	Saida Ed-Dekermane	M	M	M
Saida El-Oustani	M	M	M	Saida El-Qadimeh	M	M	M	Saida Kefraya	L	M	M
Saksakiyeh	M	M	M	Salhigh Saida	M	M	M	Sarafand	M	M	M
Sfenta	L	ML	M	Tafahta	ML	M	M	Tanbourit	L	M	M
Tebna	M	M	M	Zaghdraiya	ML	M	M	Zeita	L	M	M
Zrariyeh	ML	M	M								

## Jezzine

Municipality	19-Jan	20-Jan	21-Jan	Municipality	19-Jan	20-Jan	21-Jan	Municipality	19-Jan	20-Jan	21-Jan
Ain El-Mir (El Estab	ML	M	M	Anane	L	L	M	Aramta	L	L	M
Ariya	L	VL	M	Aychiyeh	L	L	M	Azour	L	L	M
Baba	L	L	M	Bayssour Jezzine	M	M	M	Benoueteh Jezzine	L	L	M
Bhannine	L	VL	M	Bisri	VL	VL	ML	Bkassine	L	L	M
Bouslaya	L	L	M	Btedine El-Leqech	VL	L	M	Chbail	VL	VL	L
Choualiq Jezzine	ML	M	M	Dahr Ed-Deir	L	ML	M	Deir El Qattine	L	L	M

Demachqiyeh	L	ML	M	Ghabbatiyeh	L	L	M	Harf Jezzine	VL	L	M
Hassaniyeh	L	M	M	Haytouleh	L	ML	M	Haytura	L	L	M
Hidab	L	L	M	Homsiyeh	L	L	M	Jabal Toura	L	L	M
Jarmaq	L	L	M	Jensnaya	ML	M	M	Jernaya	L	M	M
Jezzine	L	L	M	Karkha	L	ML	M	Kfar Falous	ML	M	M
Kfar Houna	L	L	M	Kfar Jarrah	M	M	M	Lebaa	ML	M	M
Louayzet Jezzine	L	L	M	Machmouche	L	VL	ML	Mahmoudiyeh Jezzine	L	L	M
Maknounye Jezzine	L	L	M	Maraat Ouazaiyeh	L	L	M	Mazraat Daraya	L	L	M
Mazraat El-Aarqoub	L	L	M	Mazraat El-Mathane	VL	VL	ML	Mazraat El-Rahbane	L	L	M
Mazraat Khallet Khaz	L	L	M	Mazraat Louzid (Loua	VL	L	L	Mazraat Qrouh	L	L	M
Mazraat Tamra	L	ML	M	Mazraat Zighrine Jez	L	L	M	Mazraat	L	L	M
Mharbiyeh	ML	M	M	Midane Jezzine	L	L	M	Mjeydel Jezzine	ML	M	M
Mlikh	L	L	M	Mrah El-Hbasse	ML	M	M	Ouadi Baanqoudaine	ML	M	M
Ouadi El-Laymoun	L	M	M	Ouardiyeh	VL	VL	L	Qabaa Jezzine	VL	L	M
Qatrani	L	L	M	Qaytouleh	L	L	M	Qtaleh Jezzine	L	L	M
Rihane Jezzine	L	L	M	Rimat	L	L	M	Roum	L	L	M
Roummanet	L	L	M	Sabbah	L	L	M	Saydoun	L	L	M
Sfaray	L	L	M	Snaya	L	L	M	Sojoud	L	L	M
Srayri	L	L	M	Taaid	L	VL	ML	Wadi Jezzine	L	L	M
Zhalta	L	L	M								

## Bekaa

### West Bekaa

Municipality	19-Jan	20-Jan	21-Jan	Municipality	19-Jan	20-Jan	21-Jan	Municipality	19-Jan	20-Jan	21-Jan
Aammiq BG	ML	L	M	Ain El Tineh BG	L	VL	M	Ain Zebdeh	L	L	M
Ana	L	L	ML	Aytanit	L	L	M	Baaloul BG	L	L	M
Bab Mareh	L	L	M	Chouberqiye Aammiq	ML	L	M	Dakoue	ML	L	M
Deir Ain El-Jaouze	L	L	M	Deir Tahniche	ML	L	ML	Ghaza	ML	L	M
Harime El-Soughra	L	L	M	Hoch Harimeh	L	L	M	Jazira BG	L	L	M
Jib Jennine	ML	L	ML	Kamed-El-Laouz	L	L	M	Kefraya BG	L	L	ML
Khiara El Atika	ML	L	M	Khiara	ML	L	M	Khirbet Qanafar	L	L	M
Lala	ML	L	M	Lebbaya BG	L	L	M	Loussa	L	L	M
Machghara	L	L	M	Manara (Hammara) BG	L	L	L	Mansoura BG	ML	L	ML
Marej BG	L	L	M	Maydoun	L	L	M	Ouaqf BG	L	L	M
Qaraaoun	L	L	M	Qelya	L	L	M	Raouda (Istabel)	L	L	M
Saghbine	L	L	M	Sohmor	L	L	M	Soltan Yacoub el Ara	ML	L	M
Souairy	ML	L	M	Sultan Yaacoub	ML	L	M	Tal Znoub	ML	L	ML
Yehmor BG	L	L	M	Zilaya	L	L	M				

### Zahle

Municipality	19-Jan	20-Jan	21-Jan	Municipality	19-Jan	20-Jan	21-Jan	Municipality	19-Jan	20-Jan	21-Jan
Aanjar (Haouch Mouss	L	L	M	Ablah	M	L	M	Ain Kfarzabad	L	L	ML
Ali-El-Nahri	M	ML	M	Bar Elias	L	L	M	Bouarej	L	L	M
Cheberqiyet Tabet	L	L	M	Chtaura	L	L	M	Deir El Ghazal	L	L	M
Delhamiyet Zahle	L	L	M	Ferzol	ML	L	ML	Haouch El-Ghanam	ML	ML	M
Haouch Es-Siyadeh	L	L	M	Haouch Hala	M	ML	M	Haouch Mandara	L	L	M

Haouch Qayssar	L	L	M	Hezerta	L	VL	M	Hosh Moussa	ML	L	M
Jdita	L	L	M	Kfarzabad	L	L	M	Ksara	L	L	M
Majdel Aanjar	L	L	ML	Makssi	L	L	M	Massa	L	M	M
Mazraat Er-Remtaniye	L	L	M	Mrayjat Zahle	L	L	M	Mzaraa Zahle	ML	L	M
Nabi Ayla	M	L	ML	Nasriyet Rizk	L	M	M	Nasriyet Zahle	L	L	M
Niha Zahle	M	L	M	Ouadi Ed-Deloum	L	L	M	Ouadi El-Arayech	ML	L	ML
Qaa El Rim	L	VL	M	Qab Elias	L	L	M	Qousaya	L	L	M
Rhit	L	ML	M	Riyak	M	ML	M	Saadnayel	L	L	M
Taal El-Akhdar	L	L	M	Taalbeya	L	L	M	Taanayel	L	L	M
Talamara	M	ML	M	Tcheflik Edde Haouch	ML	L	M	Tcheflik Qiqano	L	L	M
Terbol Zahle	L	L	M	Touaite Zahle	L	L	M	Zahle Aradi	L	L	M
Zahle El-Berbara	ML	VL	M	Zahle El-Maallaqa	ML	VL	M	Zahle El-Midane	ML	VL	M
Zahle Er-Rassiye	ML	VL	M	Zahle Haouch El-Ouma	L	L	M	Zahle Haouch El-Ouma	ML	L	M
Zahle Haouch Ez-Zara	ML	VL	M	Zahle Maalaqa Aradi	ML	L	M	Zahle Mar Antonios	ML	VL	M
Zahle Mar Elias	ML	VL	M	Zahle Mar Gerios	ML	VL	M	Zahle Saydet En-Naja	ML	VL	M
Zebdoul	L	L	M								

## Rachaiya

Municipality	19-Jan	20-Jan	21-Jan	Municipality	19-Jan	20-Jan	21-Jan	Municipality	19-Jan	20-Jan	21-Jan
Ain Arab Rachaiya	L	L	ML	Ain Ata	L	L	ML	Ain Harche	L	L	ML
Aqabe Rachaya	L	L	M	Ayha	L	L	ML	Ayta El Fokhar	L	L	ML
Bakifa Rachaya	L	L	M	Bakka	ML	L	ML	Beit Lahya	L	L	M
Bireh Rachaiya	L	L	M	Daher El Ahmar	L	L	ML	Deir El-Achayer	L	L	ML
Heloua Rachaiya	L	L	ML	Hoch El Qannabeh Rac	L	L	ML	Kaoukaba Bou Arab	L	L	ML
Kfar Danis	L	L	M	Kfar Mechki	L	L	M	Kfar Qouq	L	L	ML
Kherbet Rouha	L	L	ML	Majdel Balhiss	L	L	M	Mdoukha	L	L	ML
Mhaydseh Rachaiya	L	L	ML	Nabi Safa	L	L	M	Rachaiya	L	L	ML
Rafid Rachaiya	L	L	M	Selsata (Mazraat Dei	VL	L	L	Tannoura	L	L	M
Yanta	L	L	L								

## Beyrouth

### Beyrouth

Municipality	19-Jan	20-Jan	21-Jan	Municipality	19-Jan	20-Jan	21-Jan	Municipality	19-Jan	20-Jan	21-Jan
Achrafieh	M	M	MH	Ain el-Mreisse	M	M	MH	Bachoura	M	M	MH
Beirut Central Distr	M	M	MH	Marfai	M	M	MH	Mazraa	M	M	MH
Medaouar	M	M	MH	Minet el-Hosn	M	M	MH	Mwssaitbeh	M	M	MH
Ras Beirut	M	M	MH	Rmeil	M	M	MH	Saifi	M	M	MH
Zqaq el-Blat	M	M	MH								





## نشرة الطقس الصادرة عن مصلحة الأرصاد الجوية بالمديرية العامة للطيران المدني

### النشرة: المسائية

**الإثنين: 18 كانون الثاني 2016**

**الحالة العامة:** (URSULA) منخفض جوي مصحوب بكتل هوائية باردة متمركز فوق أوكرانيا يؤثر على الحوض الشرقي للمتوسط حتى يوم الأربعاء، تليه إنفراجات ومرتقب أن يتجدد تأثيره نهاية الأسبوع.

**الثلاثاء:** غائم وممطر بغزارة من حين لآخر مع رياح شديدة وارتفاع موج البحر وانخفاض درجات الحرارة. تتساقط الثلوج اعتباراً من ارتفاع 1000م وتتدنى تدريجياً لتلامس 900 متر ليلاً.

**الأربعاء:** غائم جزئياً مع أمطار متفرقة وثلوج على 1000م تتخللها إنفراجات واسعة، كما يتكوّن الجليد ليلاً وصباح اليوم التالي على الطرقات الجبلية والداخلية.

**الخميس:** غائم جزئياً مع ارتفاع محدود بدرجات الحرارة.

الأربعاء		الثلاثاء		الإثنين		درجات الحرارة المتوقعة	
16/9	17/8	15/9	16/8	17/12	18/10	صور	على الساحل
17/10		16/10		18/13		بيروت	
15/8		14/8		16/10		طرابلس	
11/3	11/2	10/3	10/2	13/8	13/7	بيصور	فوق الجبال
10/2		9/2		12/7		قرطبا	
-/-		-/-		-/-		فقرا	
2/3-		1/3-		1/3-		الأرز	
11/3	12/2	10/3	11/2	13/7	14/6	القرعون	في الداخل
12/4		11/4		14/8		مرجعيون	
10/2		9/2		12/6		زحلة	

**الرياح السطحية:** جنوبية إلى جنوبية غربية، سرعتها بين 30 و 50 كلم/س، تشتد لتقارب 100 كلم/ساعة.

**الإنقشاع:** متوسط، يسوء خلال فترة الأمطار.

**الرطوبة النسبية على الساحل:** بين 60 و 90%.

**حالة البحر:** مانج الى هائج.

**حالة البحر:** مانج الى هائج.

**الضغط الجوي:** 1010 hPa.

**ساعة غروب الشمس:** 16:54

**ساعة شروق الشمس:** 06:42

كمية الأمطار المسجلة حتى الساعة السادسة صباحاً (ت.ع)				
المحطات	خلال 24 ساعة	المجموع حتى اليوم	المعدل العام	السنة الماضية
بيروت - المطار	0.4 ملم	281.4 ملم	428ملم	544,4 ملم
طرابلس	0 ملم	559.2 ملم	442ملم	599,9 ملم
زحلة	0 ملم	211.8ملم	290ملم	433,5 ملم