

# Lebanon Fire Risk Bulletin



CIVIL DEDEFENCE

*Refer to cadast condition.*

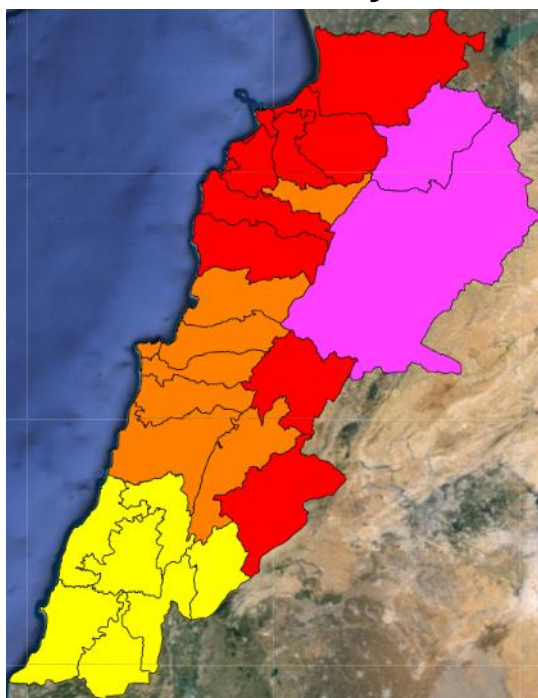
*General description of potential fire risk situation*

Symbol	Level of risk	Meaning and actions
VL	<b>Very low</b>	Very low fire risk. Controlled burning operations can be hardly executed due to high fuel moisture content. Normally wildfires self-extinguish.
L	<b>Low</b>	Low fire risk. Controlled burning operations can be executed with a reasonable degree of safety.
ML	<b>Medium low</b>	Medium-low fire risk. Controlled burning operations can be executed in safety conditions. All the fires need to be extinguished.
M	<b>Medium</b>	Medium fire risk. Controlled burning operations would be avoided. All the fires need to be very well extinguished.
M	<b>Medium high</b>	Controlled burning is not recommended. Open flame will start fires. Cured grasslands and forest litter will burn readily. Spread is moderate in forests and fast in exposed areas. Patrolling and monitoring is suggested. Fight fires with direct attack and all available resources.
H	<b>High</b>	Ignition can occur easily with fast spread in grass, shrubs and forests. Fires will be very hot with crowning and short to medium spotting. Direct attack on the head may not be possible requiring indirect methods on flanks. Patrolling and monitoring the territory is highly suggested.
E	<b>Extreme</b>	Ignition can occur also from sparks. Fires will be extremely hot with fast rate of spread. Control may not be possible during day due to long range spotting and crowning. Suppression forces should limit efforts to limiting lateral spread. Damage potential total. Patrolling and monitoring the territory is highly suggested.

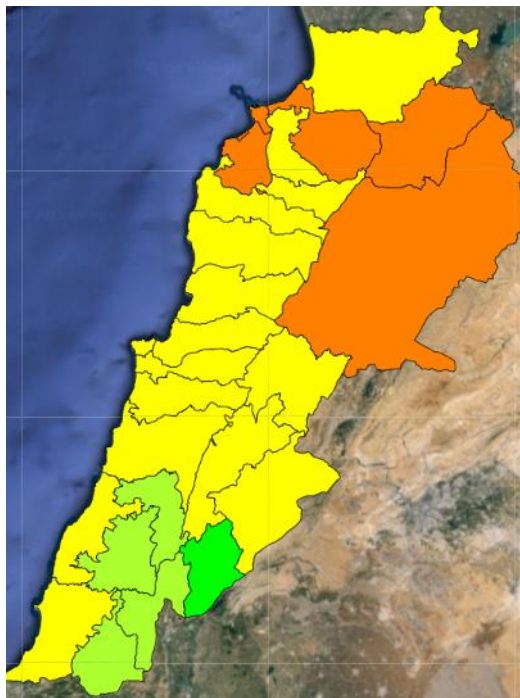
**Beirut, 20 February 2016**

# FIRE RISK INDEX

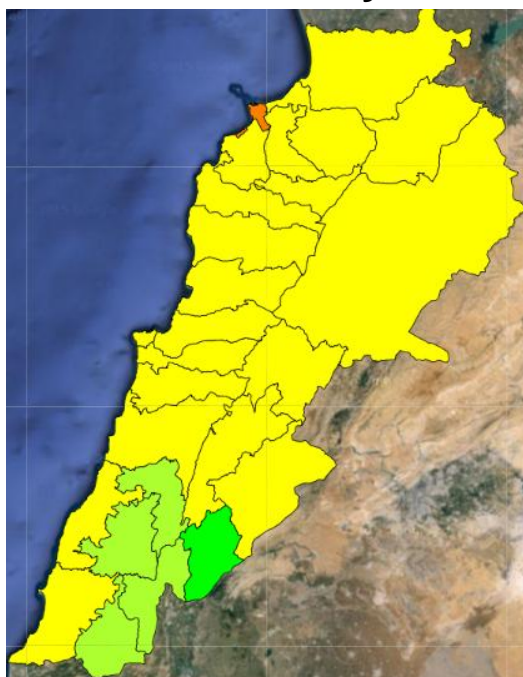
19 February



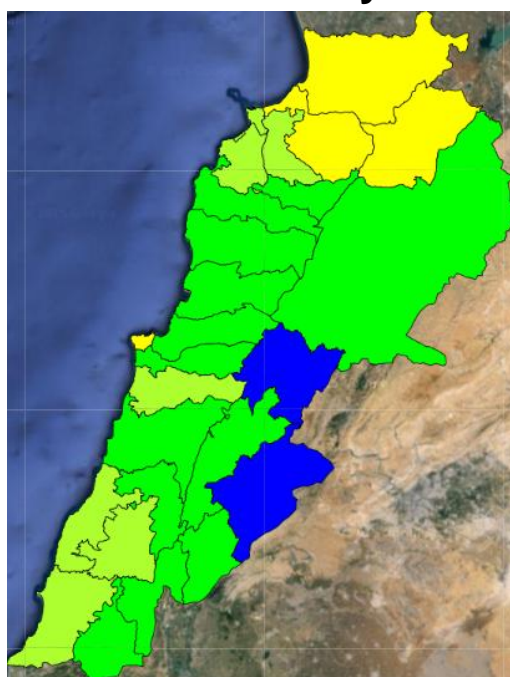
20 February



21 February



22 February

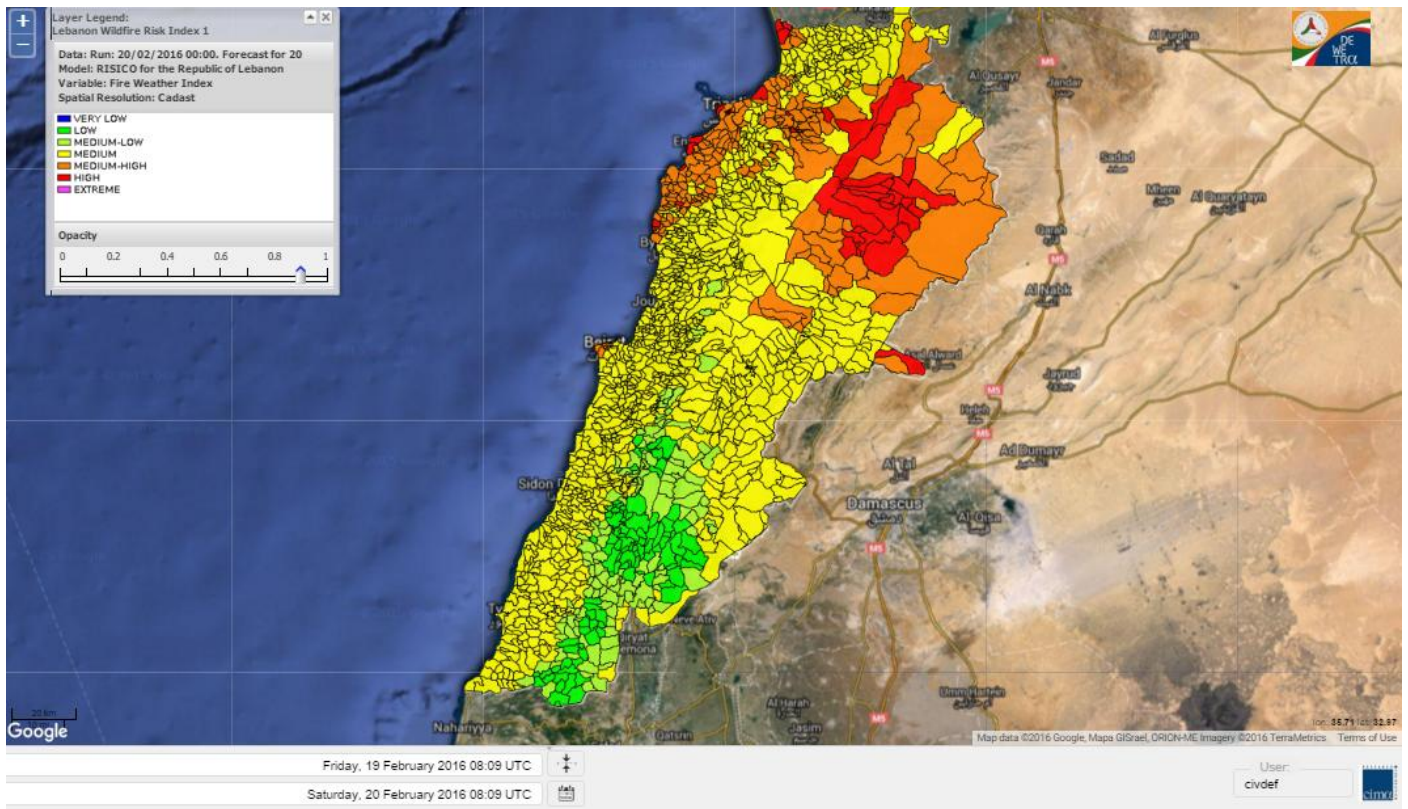


Layer Legend:  
Lebanon Wildfire Risk Index 1

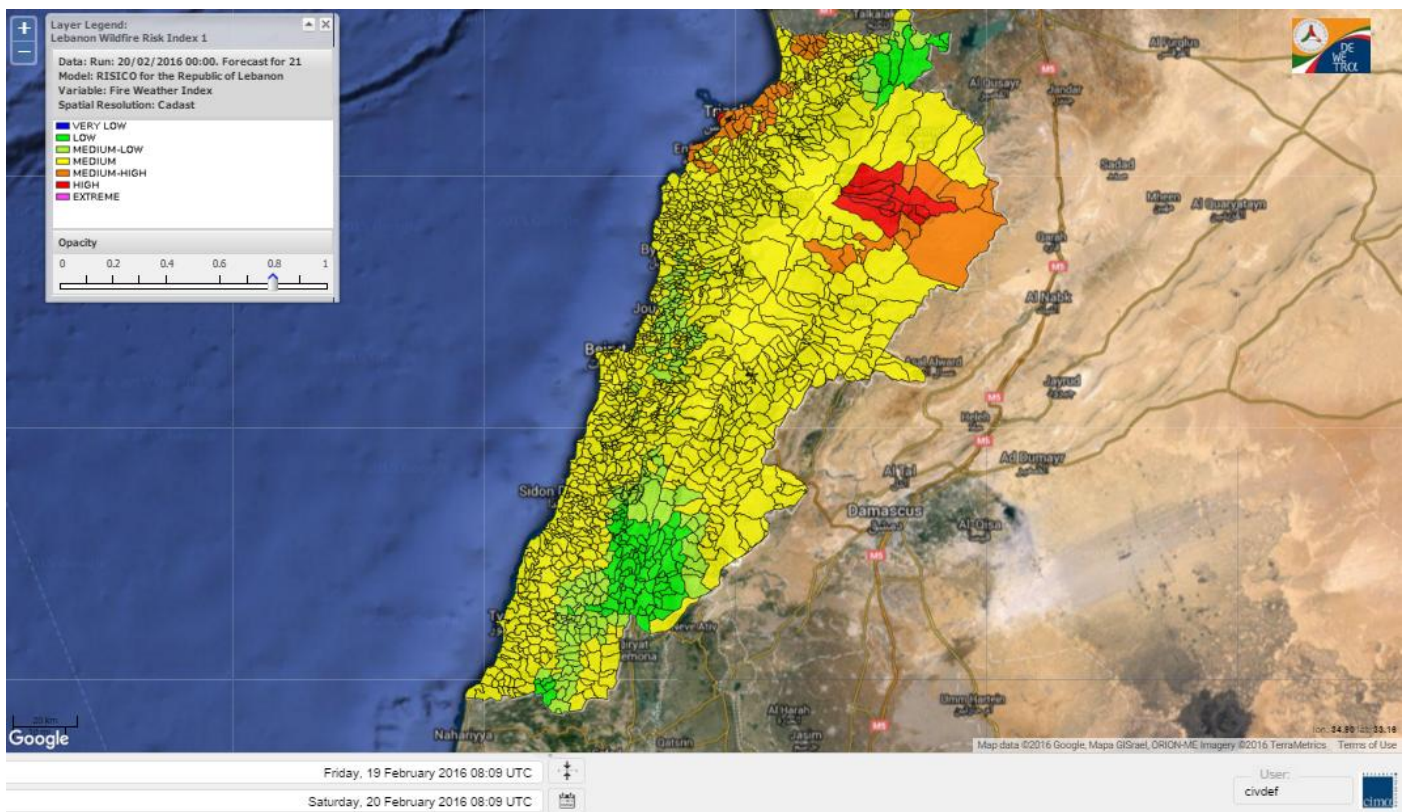
Data: Run: 20/02/2016 00:00. Forecast for 20  
Model: RISICO for the Republic of Lebanon  
Variable: Fire Weather Index  
Spatial Resolution: Caza

- VERY LOW
- LOW
- MEDIUM-LOW
- MEDIUM
- MEDIUM-HIGH
- HIGH
- EXTREME

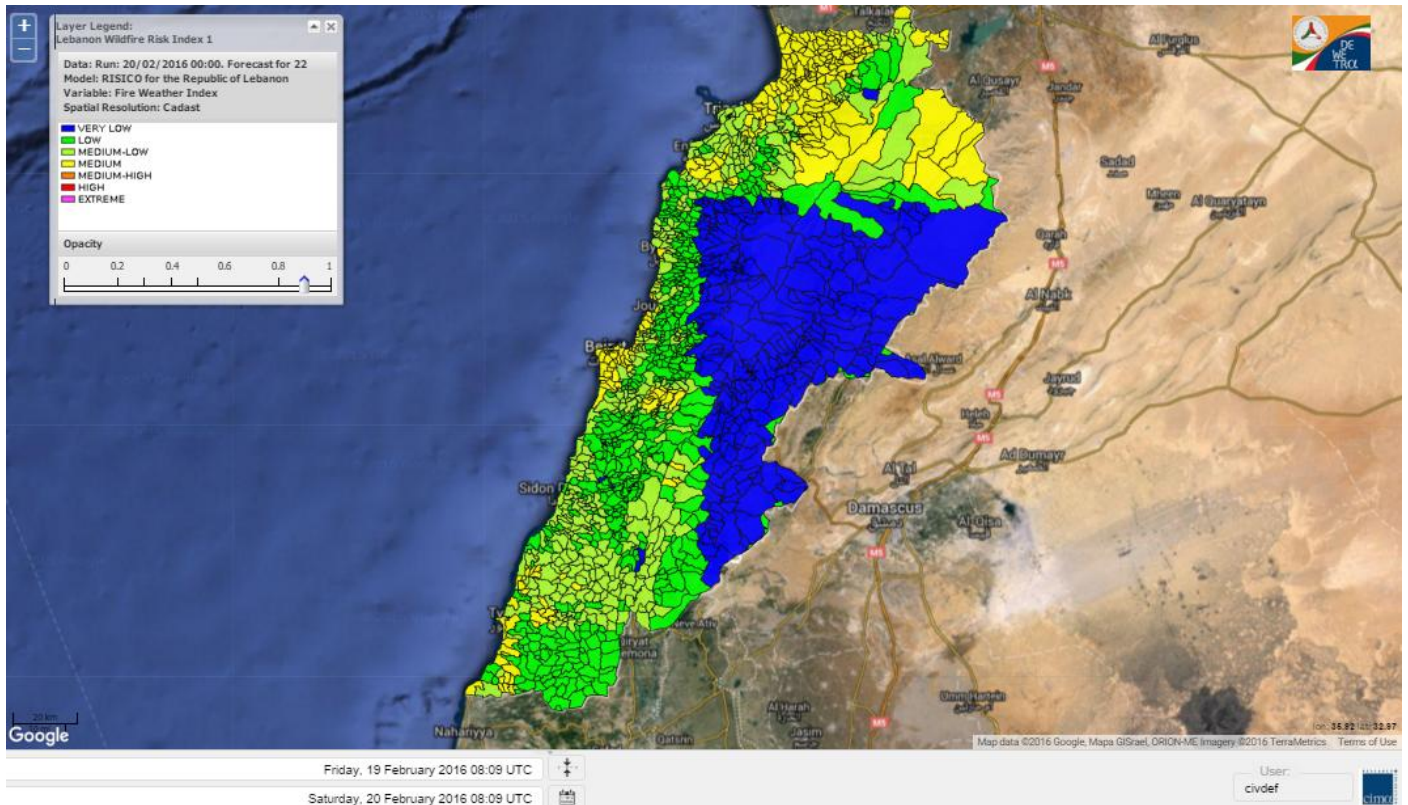
# Lebanon for 20 February 2016



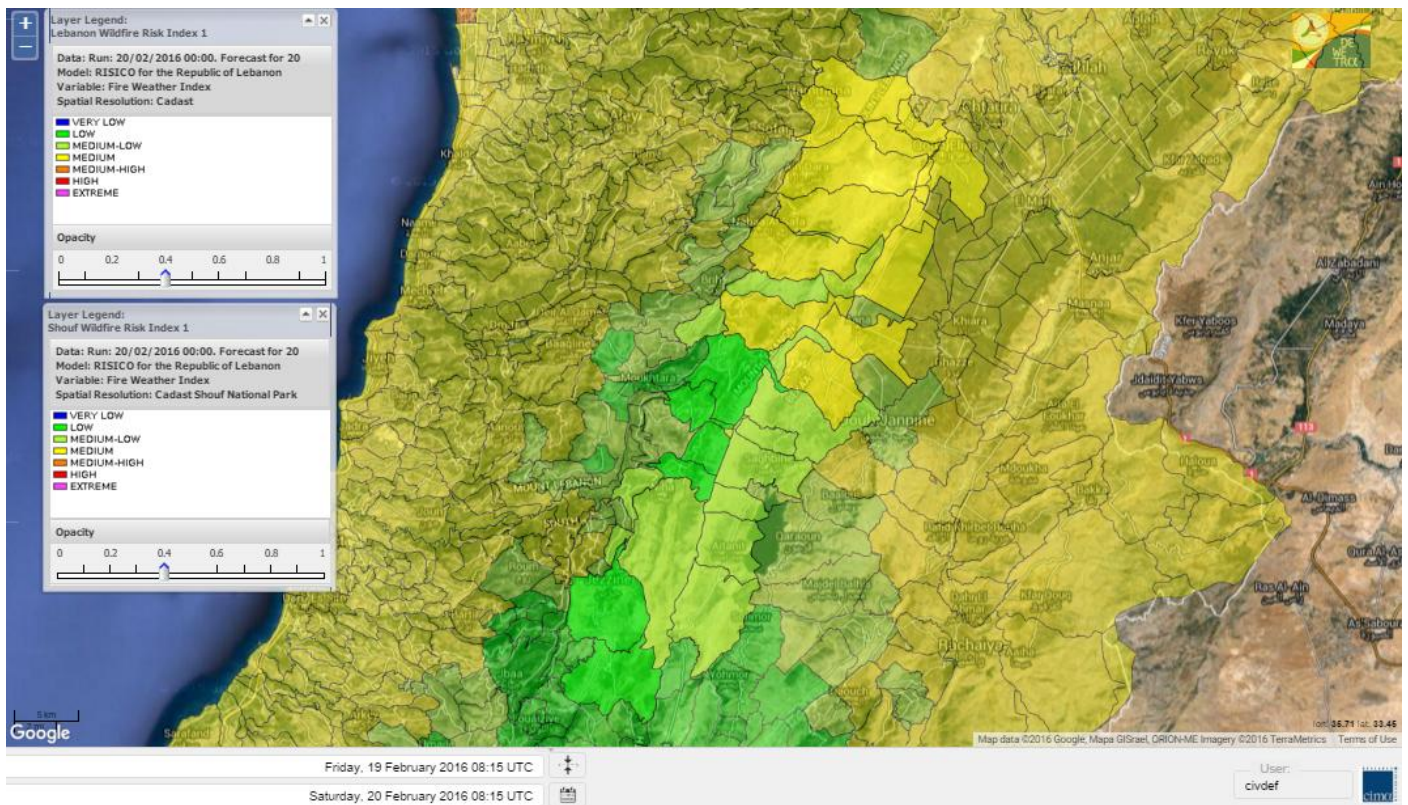
# Lebanon for 21 February 2016



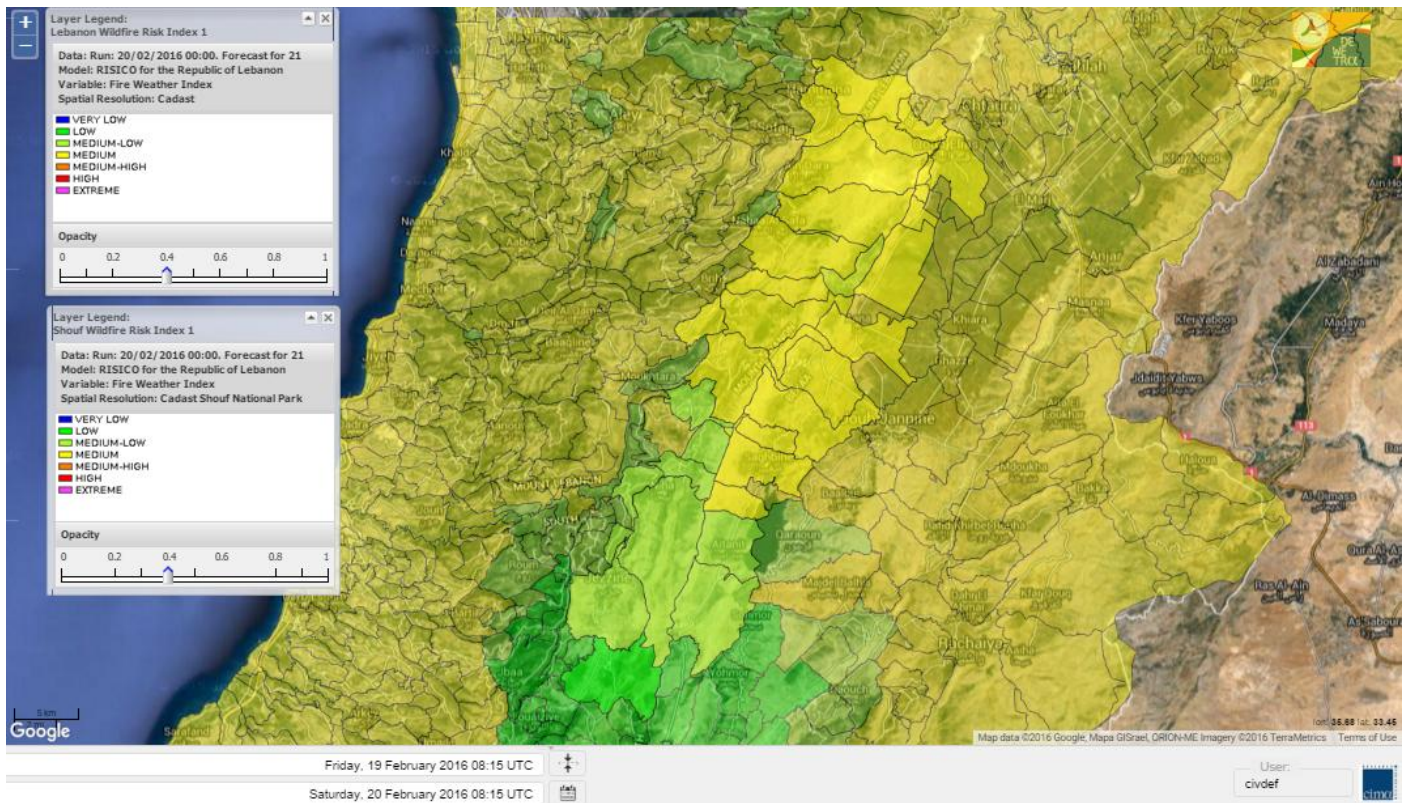
# Lebanon for 22 February 2016



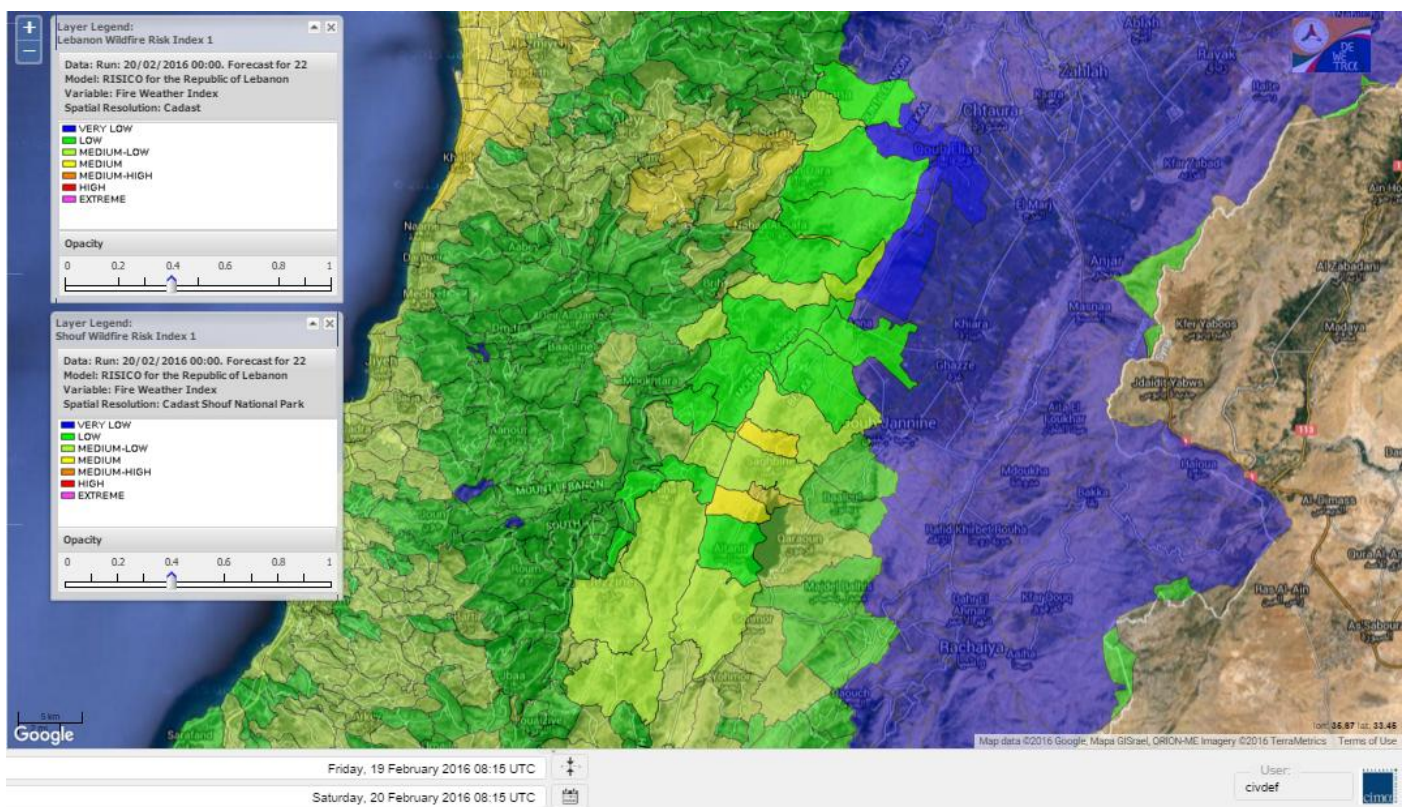
# Shouf Biosphere Reserve Forecast for 20 February 2016



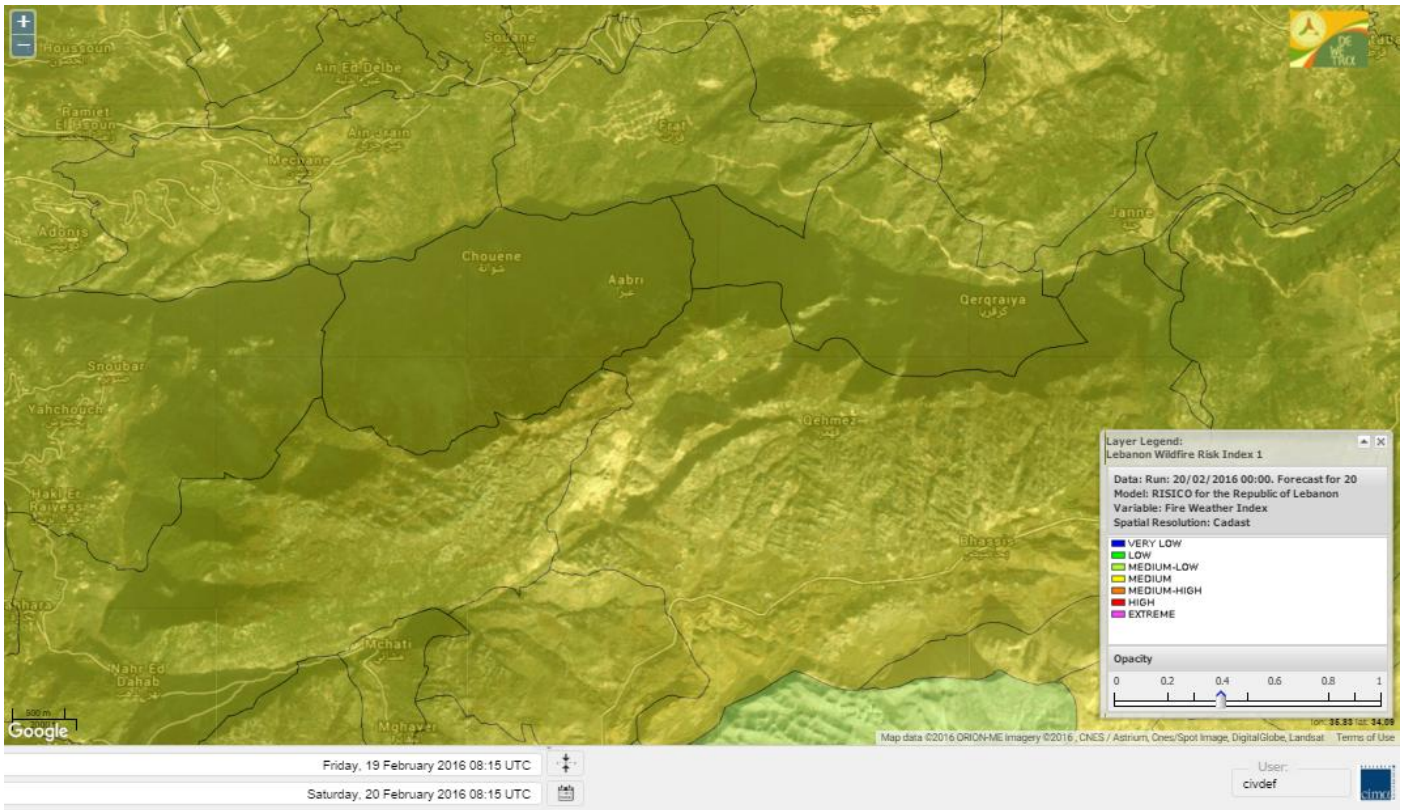
# Shouf Biosphere Reserve Forecast for 21 February 2016



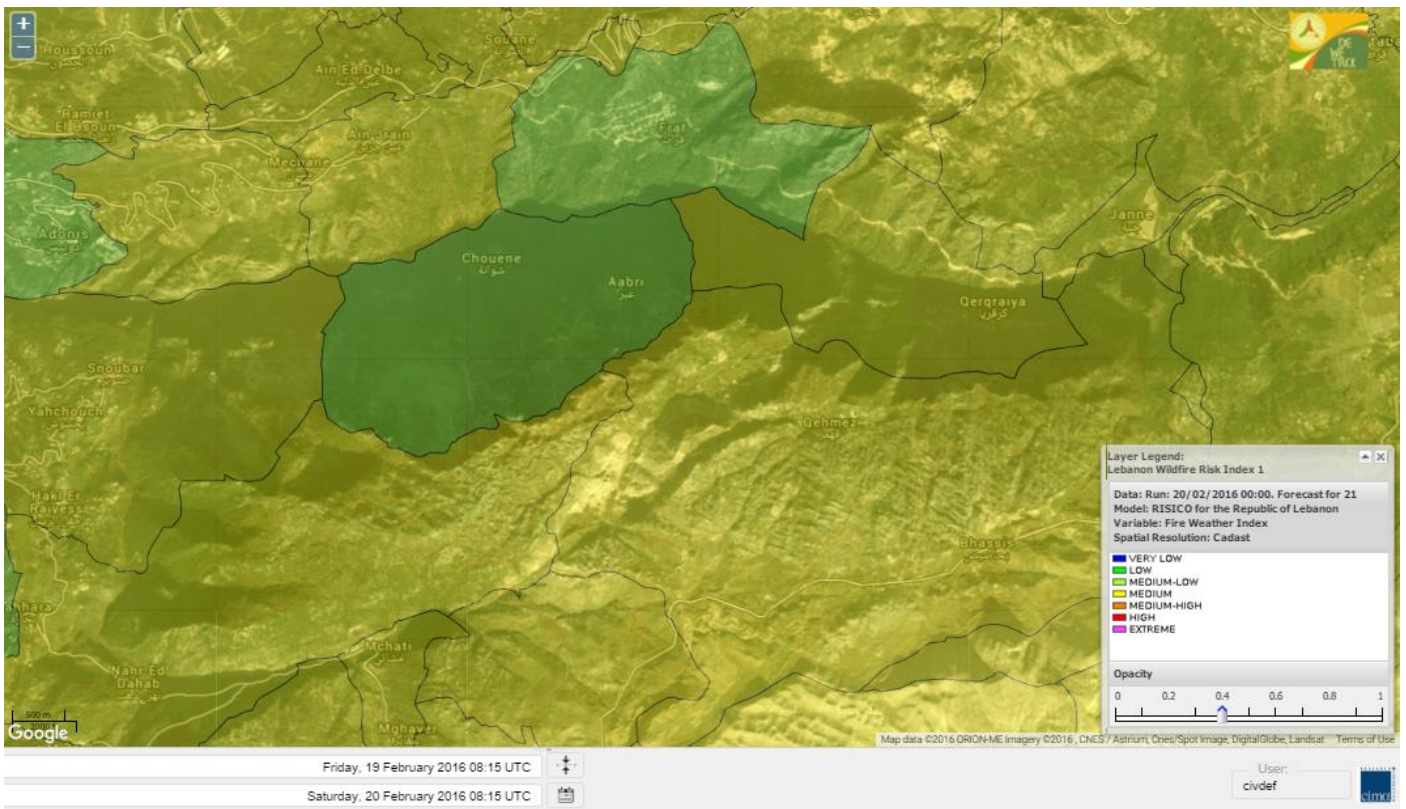
# Shouf Biosphere Reserve Forecast for 22 February 2016



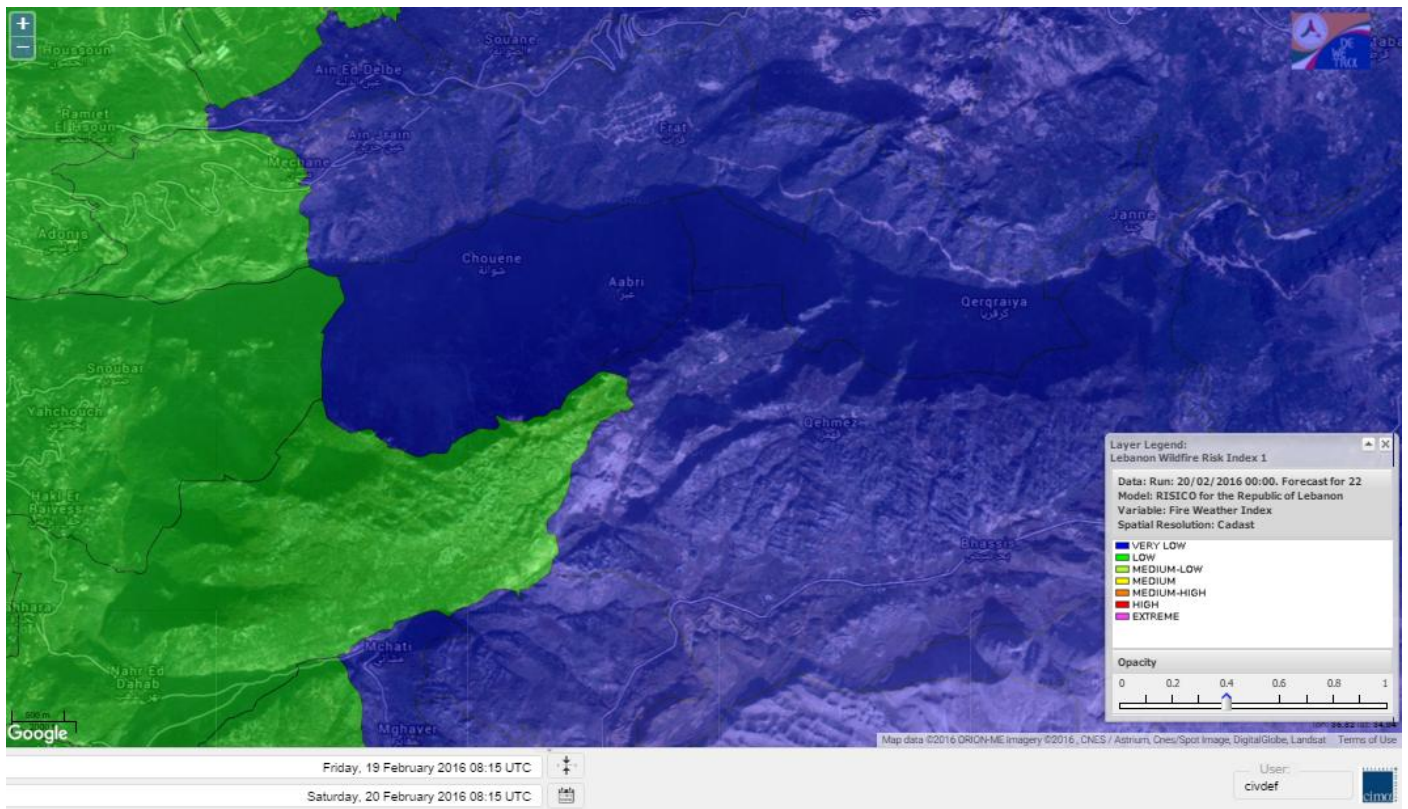
# Jabal Moussa Reserve Forecast for 20 February 2016



# Jabal Moussa Reserve Forecast for 21 February 2016



# Jabal Moussa Reserve Forecast for 22 February 2016



## Nord

### Koura

Municipality	20-Feb	21-Feb	22-Feb	Municipality	20-Feb	21-Feb	22-Feb	Municipality	20-Feb	21-Feb	22-Feb
Aaba	MH	M	M	Afsaddiq	MH	MH	M	Ain Ekrine	M	M	M
Amioun	MH	M	M	Anfeh	MH	MH	ML	Badbhoun	MH	MH	M
Barghoun	MH	MH	ML	Barsa	MH	M	ML	Batroumine	MH	MH	ML
Bdebba	MH	M	ML	Bechmizine	MH	MH	M	Bednayel El-Koura	MH	M	ML
Bhabbouch El-Koura	M	M	ML	Bkeftine	MH	M	ML	Bnehran	M	M	ML
Bqaiia El-Koura	MH	M	ML	Bsarma	M	M	ML	Btaaboura	MH	M	ML
Bterram	MH	M	M	Btouratij	MH	M	M	Bziza	M	M	ML
Dar Beehtar	MH	M	ML	Dar Chmezzine	MH	M	M	Deddeh	MH	M	ML
Deir El-Balamand	MH	M	L	Fih	MH	M	ML	Hraiche	MH	MH	ML
Ijdaabrine	M	M	L	Kaftoun	M	M	ML	Kefraya El-Koura	MH	M	ML
Kfarakka	M	M	ML	Kfarhata	MH	M	ML	Kfarhazir	MH	M	M
Kfarkahel	MH	M	ML	Kfarsaroun	M	M	ML	Kosba	M	M	ML
Mejdel el-Koura	MH	M	L	Nakhle	MH	M	ML	Qalhat	MH	M	L
Ras Masqa	MH	MH	ML	Rechdibbine	M	M	M	Zakroun	MH	M	ML
Zgharta El-Mtaouile	M	M	L								

### Bcharre

Municipality	20-Feb	21-Feb	22-Feb	Municipality	20-Feb	21-Feb	22-Feb	Municipality	20-Feb	21-Feb	22-Feb
Aabdine	M	M	L	Bane	M	M	M	Barhelioun	M	M	L
Bazouone	M	M	VL	Becharre	M	M	L	Beit Menzer	M	M	L
Billa	M	M	L	Blaouza	M	M	ML	Bqaa Kafra	M	M	VL
Bqerqacha	M	M	VL	Breissat	M	M	VL	Dimane	M	M	VL
Hadath El Jobbeh	M	M	VL	Hadchit	M	M	ML	Hasroun	M	M	VL
Mazraat Aassaf	M	M	VL	Mazraat Bani Saab	M	M	VL	Mchaa El-Jobbeh	M	M	VL
Metrit	M	M	L	Moghr El-Ahoual	M	M	ML	Ouadi Qannoubine	M	M	L
Qanat	M	M	L	Qnayouer	M	M	L	Tourza	M	M	L

### Batroun

Municipality	20-Feb	21-Feb	22-Feb	Municipality	20-Feb	21-Feb	22-Feb	Municipality	20-Feb	21-Feb	22-Feb
Aabrine	MH	M	L	Aalali	M	M	VL	Aartiz	MH	M	VL
Abdelli	MH	M	L	Ajdabra	MH	M	L	Assia	M	M	VL
Basbina	MH	M	ML	Batroun	MH	M	ML	Bcheleh	M	M	VL
Bechtoudar	M	M	VL	Beit Chlala	M	M	VL	Beit Kassab	M	M	VL
Bijdarfil	MH	M	ML	Bqesmaya	MH	M	L	Chatine	M	M	VL
Chebtin	M	M	L	Chekka	MH	M	M	Daael	MH	M	VL
Dahr Abi Yaghi	M	M	L	Daraya El-Batroun	MH	M	ML	Deir Billa	M	M	L
Deir Kfifane	MH	M	ML	Deir Mar Youhanna EL	M	M	VL	Deir Mar Youssef Jra	M	M	L
Douma	M	M	VL	Douq	M	M	L	Eddeh El-Batroun	MH	M	L
Ftihat El-Batroun	MH	M	VL	Ghouma	M	M	L	Hadtoun	M	M	VL
Hamat	MH	M	L	Harbouna	M	M	L	Hardine	M	M	VL
Helta	MH	M	VL	Hery	MH	M	M	Jebila	MH	M	VL
Jrabta El-Batroun	M	M	L	Jrane El-Batroun	MH	M	ML	Kfar Aabida	MH	M	L
Kfar Halda	M	M	VL	Kfarb Shlaimane	M	M	VL	Kfarhatna	MH	M	L
Kfarhay	M	M	ML	Kfarhelos	MH	M	L	Kfifane	MH	M	ML



Kfour El Arabi	M	M	VL	Koubba	MH	M	ML	Kour	MH	M	L
Mar Mama	M	M	VL	Masrah	M	M	L	Mehmarch	M	M	VL
Mrah Chdid	MH	M	L	Mrah El Ziyat	MH	M	L	Mrah El-Hajj	M	M	VL
Nahle El-Batroun	M	M	VL	Niha El-Batroun	M	M	VL	Oujah El-Hajjar	MH	M	L
Ouata Houb	M	M	VL	Qatnaaoun	MH	M	L	Racha	M	M	VL
Rachana	MH	M	L	Rachkida	MH	M	L	Ram El-Batroun	M	M	VL
Ras Nabhach	MH	M	L	Selaata	MH	M	ML	Sghar	M	M	L
Smar Jbayl	MH	M	L	Sourat El-Batroun	MH	M	VL	Tannourine El-Faouqa	M	M	VL
Tannourine Et-Tahta	M	M	VL	Thoum	MH	M	L	Toula El-Batroun	M	M	L
Zan	MH	M	L								

## Zgharta

Municipality	20-Feb	21-Feb	22-Feb	Municipality	20-Feb	21-Feb	22-Feb	Municipality	20-Feb	21-Feb	22-Feb
Aachach	MH	MH	M	Aalma	M	MH	M	Aarde	MH	MH	ML
Aintourine	M	M	ML	Arabet Qozhaya	M	M	L	Arde	M	M	ML
Arjis	M	M	ML	Asnoun	M	M	ML	Ayto	MH	M	L
Basloukit	M	M	M	Bchannine	M	M	ML	Besebeel	MH	M	ML
Bhairret Toula	M	M	ML	Bnachee	M	M	ML	Boussit	M	M	M
Danha	M	M	ML	Daraiya Zgharta	M	M	ML	Deir Jdeide	M	M	ML
Ehden	M	M	ML	Halan	MH	MH	M	Hariq Zgharta	M	M	ML
Houakir	M	M	L	Hraiqis	M	M	M	laal	M	M	ML
Ijbaa	M	M	ML	Karm Saddeh	MH	M	L	Kfarchakhna	MH	M	ML
Kfardlaqous	M	M	M	Kfarfou	M	M	ML	Kfarhata Zgharta	M	M	ML
Kfarhoura	MH	M	ML	Kfarsghab	M	M	ML	Kfaryachit	M	M	ML
Kfarzaina	M	M	ML	Khaldiye	M	M	ML	Mazraat Ajbeaa	M	M	ML
Mazraat Et-Teffah	MH	M	L	Mazraat Jneid	M	M	ML	Mejdlaia Zgharta	MH	MH	ML
Merh Kfarsghab	M	M	ML	Miryata	M	MH	M	Miziara	M	M	L
Mzraat Kefraya	MH	MH	M	Qorah Bach	M	M	ML	Rachiine	M	MH	M
Ras Kifa	M	M	ML	Sakhra	M	M	ML	Sebhel Zgharta	M	M	ML
Serhel	MH	M	L	Tallet Zgharta	MH	MH	ML	Toula Zgharta	M	M	ML
Zgharta	M	M	M								

## Minieh-Denniye

Municipality	20-Feb	21-Feb	22-Feb	Municipality	20-Feb	21-Feb	22-Feb	Municipality	20-Feb	21-Feb	22-Feb
Aasaymout	MH	M	M	Aaymar	MH	M	L	Aazki	MH	M	ML
Ain El-Tineh-Miniyeh	MH	M	M	Assoun	MH	M	ML	Bakhaaoun	MH	M	ML
Bchennata	M	M	ML	Bechehhara	MH	M	L	Beddawi	MH	MH	ML
Behouaita	MH	M	L	Beit El Foqss	MH	M	M	Beit Haouik	MH	M	M
Beit Zoud	MH	M	ML	Bekaasafrine	MH	M	M	Borj El Yahoudiyeh	M	MH	M
Bqarsouna	MH	M	M	Btermaz	MH	M	M	Debaael	MH	M	M
Deir Ammar	MH	MH	M	Deir Nbouh	M	M	L	Haouaret-Miniyeh	MH	M	M
Haql el Azimeh	H	M	L	Harf El Siyad	H	M	L	Hazmiye-Miniyeh	MH	M	M
Izal	M	M	ML	Jarjour	MH	M	L	Jayroun	MH	M	M
Kahf El-Malloul	M	M	L	Karm El-Moher	MH	M	ML	Kfar Binine	MH	M	M
Kfarchalane	MH	M	ML	Kfarhabou	MH	M	ML	Kharroub-Miniyeh	MH	M	M
Mazraat El-Kreme	MH	M	L	Mazraat Ketrane	MH	M	L	Merkebta	MH	MH	M
Minyeh	MH	MH	M	Mrah El Sfirat	MH	M	M	Mrah Sraj	MH	M	ML
Mrebbine	M	M	M	Nabi Youcheaa	MH	MH	M	Nemrine	MH	M	M

Qarhaiya	MH	M	M	Qarne	H	M	M	Qarsita	MH	M	M
Qattineh-Miniyeh	H	M	L	Qemmamine	MH	M	M	Qraine	MH	M	ML
Raouda-Aadoua	MH	M	ML	Rihaniyet-Miniyeh	MH	MH	M	Sfireh	MH	M	M
Sir Ed-Danniyeh	MH	M	ML	Tarane	MH	M	ML	Terbol-Miniyeh	M	MH	M
Zaghartaghriine	M	M	L	Zouq Bhannine	MH	MH	M				

## Nabatiye

### Nabatiye

Municipality	20-Feb	21-Feb	22-Feb	Municipality	20-Feb	21-Feb	22-Feb	Municipality	20-Feb	21-Feb	22-Feb
Aabba	M	ML	ML	Aazzi	ML	M	ML	Adchit El-Chqif	M	ML	M
Ain Bou Swar	L	L	ML	Ain Kana	ML	M	L	Ali El-TaHER	L	L	ML
Ansar	M	M	ML	Arab Salim	L	ML	ML	Arnoun	ML	L	ML
Bfaroue	M	M	L	Breyqaah	M	ML	ML	Charqiyeh	M	M	ML
Choukine	ML	ML	ML	Deir El Zahrani	ML	M	ML	Doueur El-Nabatiyeh	M	M	ML
Habbouch El-Nabatiye	ML	M	ML	Hamra El-Nabatiyeh	ML	ML	ML	Harouf El-Nabatiyeh	M	ML	ML
Hmaile	L	M	L	Houmin El Faouqa	ML	M	ML	Houmin El Tahta	M	M	ML
Jarjouch	L	L	L	Jbaah El-Nabatiyeh	L	L	L	Jebchit	M	ML	ML
Kfar Djal El-Nabatiy	M	ML	ML	Kfar Remmane	L	L	ML	Kfar Sir	M	ML	ML
Kfar Tebnit	ML	L	ML	Kfarfila	ML	M	ML	Kfour El-Nabatieh	ML	M	ML
Mayfadoun	ML	ML	ML	Mazraat Bsaffour	M	M	ML	Mazraat Chalbaal	M	ML	ML
Mazraat Dmoul	M	M	M	Mazraat El Khreibeh	M	M	ML	Mazraat El-Bayad El-	ML	M	ML
Mazraat Kfarjaouz	ML	ML	ML	Mazraat Qalaat Meiss	M	M	ML	Nabatiyeh El-Fawka	ML	ML	ML
Nabatiyeh Et-Tahta	ML	ML	ML	Namiriyeh	M	M	ML	Qaaqaaiyet El Jisr	M	ML	ML
Qossaibeh El-Nabatiy	M	ML	ML	Roumine	M	M	L	Sarba El-Nabatieh	ML	M	L
Sir El-Gharbiyeh	M	M	ML	Toul	ML	ML	ML	Yehmor El-Nabatiyeh	ML	L	ML
Zaoutar El Charqiyeh	ML	ML	ML	Zaoutar El-Gharbiyeh	ML	ML	ML	Zebdine El-Nabatiyeh	ML	ML	ML
Zefta	M	M	ML								

### Hasbaiya

Municipality	20-Feb	21-Feb	22-Feb	Municipality	20-Feb	21-Feb	22-Feb	Municipality	20-Feb	21-Feb	22-Feb
Aain Jarfa	L	L	L	Abou Qamha	ML	L	L	Ain Qania	L	L	L
Bourghos	L	L	ML	Chebaa	ML	ML	L	Chouaya Hasbaya	L	ML	L
Dellafeh	L	L	ML	Fardiss Hasbaiya	ML	L	L	Hasbaya	L	L	L
Hbariyeh	L	L	L	Kaoukaba Hasbaiya	ML	L	ML	Kfar Chouba	L	L	L
Kfar Hamam	L	L	L	Kfeir El-Zait	L	ML	L	Khalwat Hasbaya	L	ML	L
Khreibet Hasbaiya	ML	L	L	Majidiyeh Hasbaiya	ML	L	ML	Marj Ez-Zhour (Haouc	ML	ML	L
Meri	M	L	L	Mimass	L	L	L	Rachaiya El-Fokhar	ML	L	L
Salaiyeb	ML	L	ML								

### Marjayoun

Municipality	20-Feb	21-Feb	22-Feb	Municipality	20-Feb	21-Feb	22-Feb	Municipality	20-Feb	21-Feb	22-Feb
Aalmane Marjaayoun	L	L	L	Aamra	M	L	ML	Adayseh Marjaayoun	M	M	L
Adchit El-Koussair	L	ML	ML	Ain Aarab Marjaayoun	ML	L	ML	Bani Haiyann	L	ML	L
Blatt Marjaayoun	ML	L	ML	Blida	M	M	L	Borj El-Moulouk	ML	L	ML
Boueyda Marjaayoun	L	L	ML	Deir Mimass	ML	L	L	Deir Siriane	ML	L	ML
Dibbine	L	L	ML	Ebel El Saqi	L	L	ML	Houla	ML	M	L
Houra	M	L	L	Kfar Kila	M	ML	ML	Khiam Marjaayoun	ML	L	ML

Klayaa	ML	L	ML	Majdel Selem	L	M	L	Marjaayoun	ML	L	ML
Markaba	ML	M	L	Mays El-Jabal	ML	M	L	Mazraat Doumiat	ML	L	ML
Mazraat Sarada	ML	L	ML	Mhaibib	ML	M	L	Qabrikha	L	ML	L
Qantara	L	ML	ML	Rab El-Thalathine	ML	M	ML	Saouaneh Marjayoun	L	ML	L
Talloussa	L	ML	L	Taybeh Matjaayoun	ML	ML	ML	Touline	L	ML	L

## Bent Jbail

Municipality	20-Feb	21-Feb	22-Feb	Municipality	20-Feb	21-Feb	22-Feb	Municipality	20-Feb	21-Feb	22-Feb
Ain-Ebel	L	ML	L	Aitaroun	ML	M	L	Aynata Bint Jbeil	ML	M	L
Ayta El-Chaeb	ML	L	L	Ayta El-Jabal	ML	ML	L	Beit Lif	L	L	L
Beit Yahoun	L	ML	L	Bint Jbeil	L	M	L	Borj Qalaway	ML	ML	ML
Braachit	L	M	L	Chakra	ML	M	L	Debel	L	ML	L
Deir Antar	ML	ML	L	Froun	M	ML	ML	Ghandouriyeh Bint Jb	ML	ML	ML
Hanine	L	ML	L	Hariss	ML	ML	L	Hdatha	L	ML	L
Jmeyjme	ML	M	L	Kafra Bint Jbeil	M	M	L	Kfar Dounine	ML	ML	L
Khirbet Selm	ML	ML	L	Kounine	ML	M	L	Maroun El Ras	ML	M	L
Qalaway	ML	ML	L	Qaouzah	L	L	L	Qatmoun	L	ML	L
Ramya Bint Jbeil	L	L	L	Rchaf	L	ML	L	Rmeich	L	ML	L
Safad Al Battikh	L	M	L	Salhaneh	L	L	L	Serbine	ML	M	L
Sultanieh Bint Jbeil	L	ML	L	Tibnine	L	ML	L	Tiri	L	ML	L
Yaroun	L	M	L	Yater	ML	ML	L				

## Mont Liban

### Jbail

Municipality	20-Feb	21-Feb	22-Feb	Municipality	20-Feb	21-Feb	22-Feb	Municipality	20-Feb	21-Feb	22-Feb
Aabeydat	M	M	L	Aalita	M	M	L	Aamchit	MH	M	ML
Aarab El-Lahib	M	M	VL	Aarasta	M	M	VL	Adonis Jbeil	M	ML	L
Afqa Jbeil	M	M	VL	Ain El Delbeh Jbeil	M	M	VL	Ain El-Ghouayba	M	M	VL
Ain Jrain	M	M	VL	Ain Kfah	MH	M	ML	Almat El Chemaliyat	M	M	VL
Almat El-Jenoubiya	M	M	VL	Aqoura	M	M	VL	Bayzoun	M	M	L
Bchille Jbeil	M	ML	L	Bechtlida	M	ML	L	Behdaydat	M	M	L
Beit Habbaq	M	M	ML	Bejjeh	M	M	L	Bekhaaz	MH	M	L
Berbara Jbeil	MH	M	ML	Bintael	M	M	L	Birket Hjoula	M	M	L
Blatt Jbeil	M	M	ML	Boulhos	M	M	VL	Breyj Jbeil	M	ML	L
Chamat	MH	M	ML	Chikhane	MH	M	ML	Chmout	M	M	L
Eddeh Jbeil	M	M	ML	Ehmej	M	M	VL	Fatre	M	ML	L
Ferhet	M	M	L	Fghal	M	M	L	Frat	M	ML	VL
Ghabat	M	M	VL	Ghalboun	M	M	L	Gharzouz	MH	M	ML
Ghofrine	MH	M	ML	Habil	M	M	L	Halate	M	M	ML
Haqel	M	M	L	Hbaline	M	M	ML	Hboub	M	M	ML
Hdeine	M	M	VL	Hema Er-Rehban	M	M	VL	Hema Mar Maroun Aann	ML	M	VL
Hjoula	M	M	L	Hosrayel	MH	M	ML	Hsarat	M	M	ML
Hsoun	M	M	L	Jaj	M	M	VL	Janne	M	M	VL
Jbeil	M	M	M	Jeddeyl Jbeil	MH	M	ML	Jlisse	M	ML	L
Jouret El-Qattine	M	ML	L	Kfar Baal Annaya	M	M	L	Kfar Kidde	MH	M	L
Kfar Kouas	M	M	L	Kfar Mashoun	M	M	ML	Kfoun	M	M	L

Kharbe Jbeil	M	M	L	Laqlouq	M	M	VL	Lassa	M	M	VL
Lehfed	M	M	VL	Maad	MH	M	ML	Mar Sarkis	M	M	VL
Mastita	M	M	ML	Mayfouq	M	M	VL	Mazraat El Siyad	M	M	VL
Mazraat El-Maaden	M	M	VL	Mechane	M	M	L	Mechmech Jbeil	M	M	VL
Mehrin	M	M	ML	Mejdel El-Akoura	M	M	VL	Mghayreh Jbeil	M	M	VL
Mounsef	MH	M	ML	Nahr Ibrahim	M	M	ML	Qahmez	M	M	VL
Qartaba	M	M	VL	Qartaboun	M	M	M	Qattara Jbeil	M	M	VL
Qorqraya	M	M	VL	Ramout	MH	M	ML	Ras Osta	M	M	L
Rihane Jbeil	MH	M	ML	Sakiet El-Khayt	M	M	L	Saqi Richmaya	M	M	VL
Sebrine	M	ML	L	Seraita	M	M	VL	Souane Jbeil	M	M	VL
Tadmor	M	M	VL	Tartej	M	M	VL	Torzaiya	M	M	L
Yanouh Jbeil	M	M	VL	Zibidine Jbeil	M	M	L				

## El Metn

Municipality	20-Feb	21-Feb	22-Feb	Municipality	20-Feb	21-Feb	22-Feb	Municipality	20-Feb	21-Feb	22-Feb
Aain El-Qabu	M	ML	VL	Aain El-Qach	M	M	ML	Aain El-Teffaha	M	ML	ML
Aain el-Safssaf El-M	M	ML	L	Abou Mizane	M	M	L	Ain Aar	M	M	ML
Ain Alaq	M	M	L	Ain El-Kharroube	M	M	ML	Ain El-Sendianeh	M	ML	ML
Ain El-Zeitoune	ML	M	L	Ain Saadeh	M	M	ML	Aintoura El-Matn	M	M	VL
Amaret Chalhoub	M	M	M	Antelias	M	M	M	Atchaneh	M	ML	L
Ayroun	M	M	ML	Baabdat	M	M	L	Baouchariyeh	M	M	M
Baskinta	M	M	VL	Beit Chabab	M	ML	L	Beit El-Chaar	M	M	M
Beit El-Kekko	M	M	M	Beit Mery	M	M	L	Bhersaf	M	ML	L
Bikfaya	M	M	ML	Biyakout	M	M	M	Bnabil	M	M	L
Bourj Hammoud	M	M	M	Bqennaya	M	M	ML	Broummana El-Matn	M	M	L
Bsalim	M	M	ML	Bsifrine	M	ML	L	Bteghrine	ML	ML	L
Chaouiye	M	M	ML	Chouaya El-Matn	M	M	ML	Choueir	M	M	L
Chrine	M	ML	L	Dahr El Sawan El-Mat	M	ML	L	Daychouniyeh	M	ML	ML
Dbayeh	M	M	M	Deir Chamra	M	ML	L	Deir Mar Abda el Mch	M	ML	L
Deir Mar Roukouz	M	M	M	Deir Tamiche	M	M	ML	Dik El-Mehdi	M	M	ML
Dikwaneh	M	M	M	Douar El-Matn	M	ML	L	Fanar	M	M	ML
Fraike	M	ML	L	Haret El-Ballaneh	M	M	ML	Hbous	M	M	ML
Himlaya	M	M	ML	Jal El Did	M	M	M	Jdeideh El-Metn	M	M	M
Jouar El-Matn	M	M	L	Jouret El-Ballout	M	ML	L	Kaaqour	M	ML	L
Kfar Aaqab	M	ML	L	Kfertay El-Matn	M	M	VL	Khenchara	M	ML	L
Khillet El-Mtain	M	M	L	Konnabat Broummana	M	M	L	Konnabat Salima	M	ML	L
Machraah El-Matn	M	ML	VL	Majdel Tarchich	M	M	VL	Majzoub	M	M	ML
Mansouriyeh El-Metn	M	M	M	Mar Boutros Karm Et-	M	ML	L	Mar Chaya et Mzekke	M	M	L
Mar Moussa Ed-Douar	M	ML	L	Marjaba	M	ML	L	Masqa	M	ML	L
Mayasse	M	ML	L	Mazraat Deir Aoukar	M	M	ML	Mazraat El-Hadirat	M	M	ML
Mazraat Yachouh	M	M	ML	Mchikha	M	M	ML	Menqlet Mezher	M	M	ML
Mhaydseh Matn	M	M	ML	Mkalles	M	M	M	Mrouj	ML	M	VL
Mtain	M	M	VL	Mtayleb	M	M	ML	Nabay	M	ML	L
Naccache	M	M	ML	Ouadi Chahine	M	M	L	Ouadi El-Karm El-Mat	M	ML	L
Ouata El-Mrouj	ML	M	ML	Ouyoun El-Matn	M	ML	L	Qornet Chehwan	M	M	ML
Qornet El-Hamra	M	M	L	Roumieh	M	M	ML	Sfeilet Bikfaya	M	ML	L
Sinn El-Fil	M	M	M	Zabbougha	M	ML	L	Zalqa	M	M	M

Zarououn	M	ML	L	Zekrite	M	M	L	Zighrine El-Matn	M	M	ML
Zouk El-Khrab	M	M	M								

## Chouf

Municipality	20-Feb	21-Feb	22-Feb	Municipality	20-Feb	21-Feb	22-Feb	Municipality	20-Feb	21-Feb	22-Feb
Aalmane El-Chouf	M	M	L	Aammiq El-Chouf	M	M	L	Ain Ouzein	ML	M	L
Ain Qani	ML	M	L	Ain Zhalta	M	M	L	Ainbal	M	M	L
Amatour	ML	ML	L	Anout	M	M	L	Atrine	M	M	L
Baadarane	ML	M	ML	Baaqline	M	M	L	Baasir	M	M	ML
Barja	M	M	ML	Barouk	M	M	L	Bater	ML	ML	L
Batloun	ML	M	ML	Bayqoun	L	M	ML	Bchetfine	M	M	L
Beiteddine	M	M	L	Benouati Ech-Chouf	M	M	L	Berjein	M	M	L
Bireh et Mtalleh	ML	M	L	Biret El-Chouf	ML	M	ML	Bkechtine Ouel Mchei	M	M	L
Bkifa El-Chouf	M	M	L	Botme	L	ML	L	Bqaiaa Ech-Chouf	M	ML	L
Bsaba El-Chouf	ML	M	L	Chammis El-Chouf	M	M	ML	Chehim	M	M	L
Chemaarine	M	M	L	Chourit	M	M	L	Daher El-Chouf	M	M	L
Dalhoun	M	M	L	Damour	M	M	ML	Daraya El-Chouf	M	M	L
Deir El-Moukhalles	M	M	L	Deir Baba	M	M	L	Deir Dourit	M	M	L
Deir El-Qamar	M	M	L	Deir Kouche	M	M	L	Dibbieh	M	M	L
Dmit	M	M	L	Fouara Jaafar	M	M	L	Fraidis El-Chouf	ML	M	ML
Ghabet Jaafar	M	M	L	Gharife	M	M	L	Haret Jandal	ML	ML	L
Hasrout	ML	M	L	Jadra	M	M	ML	Jahlieh	M	M	L
Jbeih El-Chouf	L	ML	L	Jdeidet El-Chouf	ML	M	L	Jiyeh	M	M	ML
Jleilyeh	ML	M	L	Jmailiyeh	M	M	ML	Joun	M	M	L
Kahlounie El-Chouf	L	M	ML	Ketermaya	M	M	ML	Kfar Faqoud	M	M	L
Kfar Hamal	M	M	ML	Kfar Him	M	M	L	Kfar Katra	M	M	L
Kfar Niss	ML	M	ML	Kfar hay	M	M	L	Kfarnabrakh	ML	M	L
Khirbet Bisri	M	ML	L	Knayse El-Chouf	M	M	L	Maaniyeh	M	M	ML
Maasser Beiteddine	ML	M	L	Maasser El-Chouf	L	M	L	Majdalouna	M	M	L
Majdel El-Meouch	M	M	L	Mazboud	M	M	L	Mazmoura	M	M	L
Mazraat El Chouf	ML	M	L	Mazraat El Daher	M	M	L	Mazraat El-Douair	M	M	L
Mechref	M	M	L	Mghairie	M	M	ML	Mghayrie El-Chouf	M	M	L
Moukhtara	L	ML	L	Mrusti	L	ML	ML	Mtolle	ML	M	L
Naameh	M	M	ML	Niha El-Chouf	ML	ML	ML	Ouadi Abou Youssef	M	M	VL
Ouadi Ed-Deir	ML	M	L	Ouadi El-Sit	M	M	L	Ouadi bnehlay	M	M	L
Qraibeh	L	ML	L	Qreiaa	M	M	VL	Rmayle El-Chouf	M	M	ML
Semqaniyeh	L	M	ML	Sibline	M	M	ML	Sirjbeil	M	M	L
Warhanieh	ML	M	ML	Werdaniyeh	M	M	ML	Zaarourieh	M	M	L

## Baabda

Municipality	20-Feb	21-Feb	22-Feb	Municipality	20-Feb	21-Feb	22-Feb	Municipality	20-Feb	21-Feb	22-Feb
Abadiyeh	M	M	ML	Ain Mouaffaq	M	M	ML	Araiya	M	M	L
Arbaniyeh	M	ML	L	Arsoun	M	ML	L	Baabda	M	M	ML
Baalchmey	M	M	ML	Bmaryam	M	M	L	Bourj El-Brajneh	M	M	M
Boutchay	M	M	ML	Bsaba Baabda	M	M	ML	Btekhney	M	ML	L
Btibyat	M	M	L	Bzbeddine	M	M	L	Chbeniyeh	M	M	ML
Chiyah	M	M	M	Chmeisset Baabda	M	M	L	Chouit	M	M	L
Deir El-harf	M	M	L	Deir Khouna	M	M	ML	Dlaybeh	M	M	L

Falougha	M	M	L	Furn El-Chebbak	M	M	M	Hadath Beyrouth	M	M	M
Halaliyeh Baabda	M	M	L	Hammana	M	M	ML	Haret El Sett	M	ML	L
Haret Hamze	M	M	ML	Haret Hreik	M	M	M	Hasbaiya El-Metn	M	ML	L
Jouar El-Hoz	M	M	VL	Jouret Arsoun	M	M	L	Kfar Chima	M	M	M
Kfar Selouane	ML	M	VL	Khalouat Baabda	ML	M	ML	Kneisset Baabda	M	M	L
Laylakeh	M	M	M	Louayzeh Baabda	M	M	ML	Merdache	M	M	ML
Mzairaa Baabda	M	M	L	Ouadi Chahrour El Ol	M	M	ML	Ouadi Chahrour El So	M	M	L
Qalaa Baabda	M	M	L	Qhraybe Baabda	M	M	ML	Qobbayaa	M	M	ML
Qornayel	M	M	L	Qortada	M	ML	L	Qrayeh Baabda	M	M	ML
Qsaibeh Baabda	M	M	L	Qtale Baabda	M	M	L	Ras El Metn	M	ML	L
Ras El-Haref	M	M	ML	Rouayset El-Ballout	M	M	L	Salima Baabda	M	ML	L
Tahouitat El Ghadir	M	M	M	Tarchich	M	M	VL	Zandouqa	M	ML	L

## Aley

Municipality	20-Feb	21-Feb	22-Feb	Municipality	20-Feb	21-Feb	22-Feb	Municipality	20-Feb	21-Feb	22-Feb
Abey	M	M	L	Aghmid	M	ML	ML	Ain Dara	M	M	L
Ain Drafil	M	M	L	Ain El Halazoun	M	M	M	Ain El-Rmmaneh	M	ML	L
Ain Jedideh	M	M	M	Ain Ksour	M	M	L	Ain Onoub	M	M	ML
Ain Traz	M	M	L	Ainab	M	M	ML	Aley	M	M	ML
Aramoun	M	M	ML	Aytat	M	M	ML	Azouniyeh	M	M	ML
Baawerta	M	M	L	Badghan Oua Wadi Bad	ML	M	ML	Bassatine	M	M	ML
Bayssour	M	M	ML	Bchamoun	M	M	ML	Bdadoun	M	M	L
Behouara	M	M	ML	Bennay	M	M	L	Bhamdoun El-Dayaa	M	M	M
Bhamdoun El-Mhatta	M	M	M	Bkhechtey	M	M	M	Bleibel	M	M	L
Bmakine	M	M	ML	Bmehray	M	M	L	Bouzrid	M	ML	L
Bserrine	ML	M	M	Bsous	M	ML	L	Btalloun	M	M	M
Btater	M	M	M	Chanay	ML	M	M	Charoun	ML	M	M
Chartoun	M	ML	L	Chemlane	M	M	ML	Choueifat El-Aamrous	M	M	M
Choueifat El-Oumara	M	M	M	Choueifat El-Quoubbe	M	M	M	Dakkoun	M	M	L
Deir Qoubel	M	M	L	Dfoun	M	M	ML	Douair El Remmaneh	M	ML	L
Ghaboun	M	M	ML	Habramoun	M	M	L	Homs Oua Hama	M	M	ML
Houmal	M	M	ML	Jisr El Qadi	M	M	L	Kehaleh	M	ML	L
Keyfoun	M	M	ML	Kfar Aamey	M	M	ML	Kommatyeh	M	M	ML
Maasrati	M	M	ML	Majdel Baana	ML	M	M	Mansourieh et Ain El	M	M	M
Mazraat El-Nahr	M	M	ML	Mchakhte	M	M	ML	Mecherfeh	ML	M	ML
Mejdlaya	M	M	ML	Mrayjat	ML	M	ML	Ramliyah	M	M	L
Rechmaya	M	M	L	Rejmeh	M	M	ML	Remhala	M	M	L
Rouaysset El Neemane	M	M	ML	Saoufar	M	M	M	Selfaya	M	M	L
Sirhmoul	M	M	ML	Souq El Ghareb	M	M	ML	Taazanieh	M	M	M

## Kesrouane

Municipality	20-Feb	21-Feb	22-Feb	Municipality	20-Feb	21-Feb	22-Feb	Municipality	20-Feb	21-Feb	22-Feb
Achkout	M	ML	L	Adma Oua Dafneh	M	M	ML	Ain Ed-Delbe Kesroua	M	M	VL
Ain El-Rihane	M	ML	L	Aintoura Kesrouane	M	M	ML	Ajaltoun	M	ML	L
Akaybeh Kesrouane	M	M	M	Aramoun Kesrouane	M	ML	L	Azra ouel Ozor	M	ML	L
Ballouneh	M	ML	L	Batha	M	ML	L	Bekaatat Achkout	M	M	ML
Bekaatat Kanaan	M	M	VL	Bizhel	M	ML	L	Bouar	M	M	ML
Bqaatouta	ML	M	VL	Bqaq Ed-Dine	M	M	ML	Bzommar	M	M	ML

Chahtoul	M	M	L	Chnaniir	M	ML	L	Chouan	M	ML	VL
Daraya Kesrouane	M	ML	L	Darououn	M	ML	L	Deir Baqlouch	M	ML	L
Dlebta	M	ML	L	Eghbeh	M	ML	L	Faraya	M	M	VL
Fatka	M	M	L	Feytroun	M	M	L	Ghazir	M	ML	ML
Ghbaleh Kesrouane	M	ML	L	Ghedrass	M	ML	L	Ghosta	M	ML	L
Ghynéh	M	M	ML	Harharaya w Kattine	M	ML	L	Harissa Kesrouane	M	ML	L
Hayata	M	ML	L	Hosein	M	M	L	Hrajel	ML	M	VL
Jdeideh Ghazir	M	ML	L	Jeita	M	ML	L	Jounieh Ghadir	M	M	ML
Jounieh Haret Sakhr	M	M	M	Jounieh Salel Alma	M	M	ML	Jounieh Sarba	M	M	M
Jouret Bedrane	M	M	L	Jouret Mhad	M	M	L	Jouret Termos	M	M	ML
Kfar Debiane	M	M	VL	Kfar Tay Kesrouane	M	ML	L	Kfar Yassine	M	M	M
Kfour Kesrouane	M	ML	ML	Kharayeb Nahr Ibrahi	M	M	L	Klayaat Kesrouane	M	ML	L
Maarab	M	ML	L	Maaysra Kesrouane	M	ML	L	Mayrouba	M	M	VL
Mazraat Er-Ras	M	ML	ML	Mazraat Mrah El-Mir	M	ML	L	Mchaa El Ftouh	M	M	VL
Mchaa Faraya	M	M	VL	Mchaa Kfar Dibiane	M	M	VL	Mghaer	M	M	VL
Mradiyah	M	ML	L	Nahr Ed-Dahab	M	M	L	Nammoura Kesrouane	M	ML	L
Ouata El Jaouz	M	M	L	Ouata Sillam	M	M	M	Raachine	M	M	L
Rayfoun	M	M	L	Safra Kesrouane	M	M	ML	Shayle Kesrouane	M	ML	L
Tabarja	M	M	ML	Yahchouch	M	M	L	Zaaytreh	M	M	L
Zeytoun	M	M	L	Zouk Mikael	M	M	M	Zouk Mosbeh	M	M	M

## Baalbek\_Hermel

### Baalbek

Municipality	20-Feb	21-Feb	22-Feb	Municipality	20-Feb	21-Feb	22-Feb	Municipality	20-Feb	21-Feb	22-Feb
Aadous	MH	M	VL	Aamchki	MH	M	VL	Aarsal	MH	MH	VL
Ain Baalbek	MH	H	VL	Ain Bourday	M	M	VL	Ain El-Benye	M	M	VL
Ain El-Jaouz Baalbek	MH	M	VL	Ain El-Siya Chadoura	M	M	VL	Al Khodr Baalbek	M	M	VL
Al Nabi Chit	M	M	VL	Aynata Baalbek	MH	M	VL	Baalbek	M	M	VL
Bachwat	MH	M	VL	Barqa	MH	M	VL	Bednayel Baalbak	M	M	VL
Beit Chama	M	M	VL	Bijjaje	H	H	VL	Bouday	M	M	VL
Brital	M	M	VL	Btadi	MH	M	VL	Chaat	H	MH	VL
Chaibe	M	M	VL	Chlifa	MH	M	VL	Chmestar	MH	M	VL
Dar El-Oussa	MH	M	VL	Deir El-Ahmar	MH	MH	VL	Deir Mar Maroun Baal	M	M	M
Douris	M	M	VL	Fakiha	H	H	L	Hadath Baalbek	M	M	VL
Ham	M	M	VL	Haour Taala	M	M	VL	Hizzine	M	M	VL
Hlebta	H	H	L	Hosh Barada	M	M	VL	Hosh El Dahab	MH	M	VL
Hosh El Snid	M	M	VL	Hosh El-Nabi	M	M	VL	Hosh El-Rafiq	M	M	VL
Hosh Tal Safiya	MH	M	VL	Hrebta	H	H	VL	laat	MH	M	VL
Jebaa	M	M	VL	Jenta	M	M	VL	Kfar Dabach	MH	M	VL
Kfar Dane	M	M	VL	Khraibeh El-Hermel	H	H	VL	Khreibet Baalbek	M	M	VL
Kneisset Baalbek	H	MH	VL	Labueh	H	MH	VL	Maarboun	M	M	VL
Majdaloun	M	M	VL	Maqneh	MH	M	VL	Mazraat Beit Mcheik	M	M	VL
Misraya	M	M	VL	Mograq	H	MH	VL	Nabha El-Damdoum	H	M	L
Nabi Chbay	M	M	VL	Nabi Osman	H	H	VL	Nahleh baalbek	MH	M	VL
Ouadi El-Oss	H	H	L	Qaa Baayoun	MH	M	M	Qaa Jouar Maqiye	M	M	M
Qaa Ouadi El-Khanzir	M	M	M	Qah Baalbek	MH	M	M	Qarha Baalbek	H	MH	VL

Qsarnaba	M	M	VL	Ram Baalbek	MH	M	VL	Ras Baalbek El Sahl	MH	MH	M
Ras Baalbek El-Charq	MH	MH	ML	Riha	H	M	VL	Saaide	M	M	VL
Sboubba	H	H	VL	Seriine El-Tahta	M	M	VL	Slouqi	MH	M	VL
Taiba Baalbek	M	M	VL	Talia	M	M	VL	Taraiya	MH	M	VL
Temnin El Fawqa	M	M	VL	Temnin El-Tahta	M	M	VL	Tfail	H	M	VL
Yahfoufa	M	M	VL	Yammouneh	MH	M	VL	Younine	H	M	VL
Zboud	H	H	L								

## Hermel

Municipality	20-Feb	21-Feb	22-Feb	Municipality	20-Feb	21-Feb	22-Feb	Municipality	20-Feb	21-Feb	22-Feb
Charbine El-Hermel	H	M	L	Hermel Jbab	H	M	M	Hermel	MH	M	M
Maaysra El-Hermel	H	H	L	Michaa Mrajhine	H	M	M	Ouadi Faara	H	H	ML
Ras Baalbek - Ouadi	H	MH	M	Ras Baalbek El Gharb	MH	H	ML	Zighrine	MH	M	ML

## Akkar

### Akkar

Municipality	20-Feb	21-Feb	22-Feb	Municipality	20-Feb	21-Feb	22-Feb	Municipality	20-Feb	21-Feb	22-Feb
Aain Tinta	M	M	M	Aaiyat	M	ML	ML	Aakkar El-Aatiqa	M	ML	L
Aamar Akkar	M	M	M	Aamar El Baykat	M	M	M	Aamayer	M	ML	M
Aamriyet Akkar	M	M	M	Aandqet	M	L	L	Aarmeh	M	M	M
Aarqa	M	M	M	Aawaynat	M	ML	ML	Aayoun Akkar	M	M	M
Abboudiye	M	M	M	Ain El-Zeit	M	M	M	Ain Yaaqoub	M	ML	ML
Akroum	MH	L	ML	Aridet Cheikh Zennad	H	M	M	Baldeh w Mazraat Bal	M	M	M
Barcha	M	M	M	Bardeh	M	M	M	Bebnine	MH	MH	M
Beino	M	M	M	Beit Ayoub	M	M	M	Beit El-Haouch	M	M	M
Beit Mellat	M	M	M	Beit Younes	M	M	ML	Berbara Akkar	M	M	M
Berqayel	M	M	M	Bezbina	M	M	L	Bireh Akkar	M	M	M
Borj	M	M	M	Bqerezla	M	M	M	Bzal	MH	M	M
Chane	M	M	M	Chaqdouf	M	ML	M	Charbila	M	M	M
Cheikh Mohammad	M	M	M	Cheikh Taba Es-Sahl	M	M	M	Cheikh Taba	M	M	M
Cheikh Zennad	MH	M	M	Cheikhlar	M	ML	ML	Chir Hmairine	M	MH	M
Daghle	M	M	M	Dahr Laissine	M	M	M	Darine	M	MH	M
Dawra	M	ML	L	Dawsa w Baghdadi	M	M	M	Dayret Nahr El-Kabir	M	M	M
Deir Dalloum	M	M	M	Deir Jennine	M	M	M	Denbou	M	M	M
Dibbabiyyeh	M	M	M	Douair Aadwiyeh	M	M	M	Fassikine	M	M	M
Fnaydek	M	M	ML	Fraydes Akkar	M	M	ML	Ghazayle	M	M	M
Habchit	M	M	M	Hakour	M	M	M	Halba	M	M	M
Haouchab	M	MH	M	Hayssat	M	MH	M	Haytla	M	M	M
Hayzouq	M	M	M	Hedd	M	M	M	Hmaira Akkar	M	M	M
Hmaiss Akkar	M	M	M	Hnaider	M	L	M	Hokr Ed-Dahri	MH	M	M
Hokr Etti	M	M	M	Hokr Jouret Srar	M	MH	M	Houaich	M	M	M
Hrar	M	M	M	Idbil	M	M	M	Ilal	M	M	M
Janine	M	M	M	Jdeidet El-JoumeH	M	M	M	Jdeidet El-Kaiteh	M	M	M
Jebayel	M	M	M	Kafr	M	M	L	Kafr	M	M	M
Karm Asfour	M	M	M	Kfar Melki Akkar	M	M	M	Kfar Noun	M	M	ML
Kfarharra	M	M	M	Khalsa	M	ML	M	Kharnoubet Akkar	M	M	M



Khirbet Daoud Aakkar	M	M	M	Khirbet El Remmane	M	ML	ML	Khirbet Shar	M	M	M
Khoreybet El-Jindi	M	M	M	Khreibet Aakkar	M	M	M	Kneisset Aakkar	MH	M	M
Kneisset Hnaider	M	L	M	Knisse	M	M	M	Kroum El-Aarab	M	M	M
Kwachra	M	M	M	Kweykhat	M	MH	M	Machta Hammoud	M	ML	ML
Majdala	M	M	M	Majdel Akkar	M	ML	M	Mar Touma	MH	MH	M
Marlaya Melhem	M	M	M	Mashha	M	M	M	Massoudiye	MH	MH	M
Mazraat Beit Ghattas	M	M	M	Mazraat En-Nahriye	M	ML	ML	Mechmech	MH	M	M
Memneh	MH	M	L	Mhammara	MH	MH	M	Mighraq Aakkar	MH	M	M
Minyara	M	M	M	Moqayteh	M	M	M	Mounjez	M	M	ML
Msalla	M	M	M	Mzeihmeh	M	M	M	Nfaiseh	M	M	M
Noura Et-Tahta	M	M	M	Ouadi El-Haour	M	M	M	Ouadi El-Jamous	MH	MH	M
Ouyoun El-Ghizlane	M	M	M	Qaabarine	M	M	M	Qabaait	MH	M	M
Qachlaq	M	M	M	Qantara Aakkar	M	M	M	Qarha Aakkar	M	L	M
Qarqaf	MH	MH	M	Qboula	M	M	M	Qleiaat Aakkar	MH	M	M
Qloud El-Baqie	M	M	M	Qobaiyat Aakkar	M	L	L	Qobbat Chamrat	M	M	M
Qorayat	M	M	ML	Qornet Aakkar	M	M	ML	Qsair Aakkar	M	M	M
Rahbe	M	M	ML	Rihaniyet Aakkar	M	M	M	Rmah	M	M	ML
Rmoul	M	M	M	Saadine	M	MH	M	Sadaqa	M	M	M
Saidnaya	M	M	M	Sammouniye	M	M	M	Sayssouq	M	M	M
Semmaqiye	MH	M	M	Semmaqli	M	M	M	Sfinet El-Dreib	M	M	M
Sfinet El-Qaitaa	MH	M	ML	Sindyanet Zeidane	M	ML	ML	Souaisset Aakkar	M	M	M
Srar	M	M	M	Tal Abbas El Gharby	M	MH	M	Tal Abbas El-Charqy	M	MH	M
Tal Biret	M	MH	M	Tal Hmayra	M	MH	M	Tal Maayan Tal Kiri	MH	MH	M
Tal Sibel	M	M	M	Tallet Chattaha	M	M	M	Tikrit	M	M	M
Tleil	M	M	M	Tshea	M	M	L	Zawarib	M	M	M
Zouq El Hosniyeh	M	M	M	Zouq El-Haddara	M	M	M	Zouq El-Hbalsa	M	M	M
Zouq El-Moqachrine	MH	M	M								

## Sud

### Sour

Municipality	20-Feb	21-Feb	22-Feb	Municipality	20-Feb	21-Feb	22-Feb	Municipality	20-Feb	21-Feb	22-Feb
Aaiyeh	M	M	L	Aalma El-Chaab	M	M	ML	Aaytit	M	M	L
Abbassiyeh Sour	M	M	ML	Abou Chech	M	M	M	Ain Abou Abdallah	M	M	L
Ain Baal	M	M	L	Arzoun	M	ML	ML	Aziyeh	M	M	L
Baflaya	M	ML	ML	Barich	M	M	M	Batouliyah	M	M	ML
Bayad	M	M	L	Bazouriyeh	M	M	L	Bediass	M	M	ML
Bestiyat	M	M	M	Borj El Chemali	M	M	M	Borj En-Naqoura	M	M	M
Borj Rahhal	M	M	ML	Boustane	M	M	L	Btaychiyah	M	M	M
Chaaitiye	M	M	L	Chameh	M	M	ML	Chehabiye	ML	ML	L
Chehour	M	ML	L	Chihine	M	M	L	Debaal Sour	M	M	ML
Deir Amess	M	M	L	Deir Kifa	ML	ML	ML	Deir Qanoun El-Ain	M	M	M
Deir Qanoun El-Naher	M	M	ML	Derdghaiya	M	ML	ML	Dhayra	M	M	M
Halloussiyeh	M	M	M	Hamoul	M	M	L	Hanaouey	M	M	L
Henniye	M	M	M	Hmairi Sour	M	M	ML	Iskandarouna Sour	M	M	L
Jbal El Botom	M	M	L	Jebbin	M	M	M	Jennata	M	M	M
Jijim	M	M	L	Jouaiya	M	M	L	Kneisset Sour	M	M	L

Maarake	M	M	M	Maaroub	M	M	M	Majadel	M	M	L
Majdalzoun	M	M	M	Mansouri Sour	M	M	M	Marnba	M	ML	L
Marouahine	ML	M	L	Mazraat El-Zalloutiy	M	M	ML	Mazraat Mechref	M	M	L
Mazraat Tayr Semhat	ML	L	L	Mheilib	M	M	M	Neffakhiyeh	ML	ML	ML
Niha Sour	M	ML	ML	Ouadi Jilo	M	M	L	Qana	M	M	L
Qolaileh Sour	M	M	M	Rechknayan	M	M	L	Rmadiyah	M	M	L
Selha Sour	ML	ML	ML	Siddiqine	M	M	L	Sour	M	M	M
Srifa	M	ML	ML	Tayr Debbe	M	M	L	Tayr Felsay	M	M	ML
Tayr Harfa	M	M	M	Touayri	ML	ML	L	Toura	M	M	M
Yanouh Sour	M	M	M	Yarine	M	M	M	Zebqine	M	M	L

## Saida

Municipality	20-Feb	21-Feb	22-Feb	Municipality	20-Feb	21-Feb	22-Feb	Municipality	20-Feb	21-Feb	22-Feb
Aanqoun	M	M	ML	Aaqtanit	M	M	ML	Aarab Ej-Jall	ML	M	ML
Aarab Tabbaya	M	M	ML	Abra Saida	M	M	ML	Adloun	M	M	ML
Adousiyeh	M	M	L	Ain-El-Deleb	M	M	L	Arzai	M	M	ML
Babliyah	M	M	ML	Barty	M	M	ML	Bissariyeh	M	M	ML
Bnaafoul	M	M	ML	Bqosta	M	M	ML	Bramiy	M	M	L
Daoudiyeh	M	M	ML	Dareb El-Sim	M	M	ML	Erkay	M	M	ML
Ghassanieh	M	M	ML	Ghazieh	M	M	ML	Hajjeh	M	M	ML
Haret Saida	M	M	ML	Hartiyeh	M	M	M	Hlaliye Saida	M	M	ML
Insariyat	M	M	ML	Jazira Saida	M	M	ML	Kafar Bit	M	M	ML
Kaoutariyet El-Siyad	M	M	ML	Kfar Chellal	M	M	L	Kfar Hatta Saida	M	M	ML
Kfar Milke Saida	M	M	ML	Khartoum	M	M	ML	Khaziz	M	M	ML
Khirbet Ed-Douair Sa	M	M	L	Khirbet El-Bassal	M	M	ML	Khrayeb Saida	M	M	ML
Loubieh	M	M	ML	Maghdouche	M	M	ML	Majdelyoun	M	M	ML
Matariyet El-Choumar	M	M	M	Matayriyeh	M	M	L	Mazraat 'Mseileh	M	M	L
Mazraat 'Snaiber	M	M	L	Mazraat Aarab Soukka	ML	M	ML	Mazraat Deir Taqla	M	M	L
Mazraat El Yahoudiye	M	M	M	Mazraat El-Housseini	M	M	ML	Mazraat El-Mhaydaleh	M	M	M
Mazraat El-Ouasta	M	M	M	Mazraat Jamjim	M	M	ML	Mazraat Kaoutariyet	M	M	M
Mazraat Kfar Badda	M	M	M	Mazraat Oussamiyat	M	M	M	Mazraat Sari	M	M	M
Mazraat Sinai	M	M	ML	Meemariyeh	M	M	L	Merouaniyeh	M	M	ML
Miyeh ou Miyeh	M	M	ML	Najjariyeh	M	M	L	Qaaqaiyat El-Snaouba	M	M	L
Qnarit	M	M	ML	Qraiye Saida	M	M	ML	Saida Ed-Dekermane	M	M	ML
Saida El-Oustani	M	M	L	Saida El-Qadimeh	M	M	ML	Saida Kefraya	M	M	L
Saksakiyeh	M	M	L	Salhigh Saida	M	M	L	Sarafand	M	M	L
Sfenta	M	M	L	Tafahta	M	M	ML	Tanbourit	M	M	L
Tebna	M	M	L	Zaghdraiya	M	M	L	Zeita	M	M	ML
Zrariyeh	M	M	ML								

## Jezzine

Municipality	20-Feb	21-Feb	22-Feb	Municipality	20-Feb	21-Feb	22-Feb	Municipality	20-Feb	21-Feb	22-Feb
Ain El-Mir (El Estab	M	M	ML	Anane	M	M	L	Aramta	L	L	ML
Ariya	ML	ML	L	Aychiyeh	L	L	L	Azour	M	ML	L
Baba	M	ML	L	Bayssour Jezzine	M	M	ML	Benoueteh Jezzine	ML	ML	L
Bhannine	ML	ML	L	Bisri	M	ML	L	Bkassine	M	ML	L
Bouslaya	L	ML	L	Btedine El-Leqech	M	ML	L	Chbail	L	L	VL
Choualiq Jezzine	M	M	L	Dahr Ed-Deir	M	M	L	Deir El Qattine	L	ML	L

Demachqiyeh	ML	L	ML	Ghabbatiyeh	ML	ML	L	Harf Jezzine	M	ML	L
Hassaniyeh	M	M	L	Haytouleh	M	M	L	Haytura	L	L	L
Hidab	L	ML	L	Homsiyeh	M	L	L	Jabal Toura	L	L	ML
Jarmaq	L	L	ML	Jensnaya	M	M	ML	Jernaya	ML	M	ML
Jezzine	L	ML	ML	Karkha	M	M	L	Kfar Falous	M	M	ML
Kfar Houna	L	L	ML	Kfar Jarrah	M	M	ML	Lebaa	M	M	ML
Louayzet Jezzine	L	L	L	Machmouche	M	ML	L	Mahmoudiyeh Jezzine	L	L	ML
Maknounye Jezzine	L	L	L	Maraat Ouazaiyeh	L	L	L	Mazraat Daraya	L	L	L
Mazraat El-Aarqoub	L	L	L	Mazraat El-Mathane	M	ML	VL	Mazraat El-Rahbane	L	L	L
Mazraat Khallet Khaz	L	L	L	Mazraat Louzid (Loua	L	L	L	Mazraat Qrouh	L	L	L
Mazraat Tamra	ML	L	ML	Mazraat Zighrine Jez	L	L	L	Mazraat	L	L	L
Mharbiyeh	M	M	ML	Midane Jezzine	M	M	L	Mjeydel Jezzine	M	M	ML
Mliikh	L	L	L	Mrah El-Hbasse	M	M	ML	Ouadi Baanqoudaine	M	M	ML
Ouadi El-Laymoun	M	M	ML	Ouardiyeh	L	L	VL	Qabaa Jezzine	M	L	L
Qatrani	L	L	L	Qaytouleh	ML	L	L	Qtaleh Jezzine	M	M	L
Rihane Jezzine	L	L	ML	Rimat	M	M	L	Roum	ML	ML	L
Roummanet	L	L	ML	Sabbah	M	ML	L	Saydoun	L	ML	L
Sfaray	M	M	L	Snaya	L	L	L	Sojoud	L	L	L
Srayri	L	L	ML	Taaid	M	ML	L	Wadi Jezzine	ML	ML	L
Zhalta	L	L	L								

## Bekaa

### West Bekaa

Municipality	20-Feb	21-Feb	22-Feb	Municipality	20-Feb	21-Feb	22-Feb	Municipality	20-Feb	21-Feb	22-Feb
Aammiq BG	M	M	VL	Ain El Tineh BG	L	L	ML	Ain Zebdeh	ML	M	M
Ana	M	M	L	Aytanit	ML	ML	L	Baaloul BG	ML	M	L
Bab Mareh	ML	M	M	Chouberqiye Aammiq	M	M	VL	Dakoue	M	M	VL
Deir Ain El-Jaouze	ML	M	M	Deir Tahniche	ML	M	VL	Ghaza	M	M	VL
Harime El-Soughra	M	M	VL	Hoch Harimeh	M	M	VL	Jazira BG	M	M	VL
Jib Jennine	ML	M	VL	Kamed-El-Laouz	M	M	VL	Kefraya BG	M	M	L
Khiara El Atika	M	M	VL	Khiara	M	M	VL	Khirbet Qanafar	ML	M	ML
Lala	M	M	L	Lebbaya BG	L	L	ML	Loussa	L	L	ML
Machghara	ML	ML	ML	Manara (Hammara) BG	M	M	VL	Mansoura BG	M	M	VL
Marej BG	M	M	VL	Maydoun	L	L	ML	Ouaqf BG	M	M	VL
Qaraaoun	ML	ML	ML	Qelya	L	L	ML	Raouda (Istabel)	M	M	VL
Saghbine	ML	M	ML	Sohmor	L	L	ML	Soltan Yacoub el Ara	M	M	VL
Souairy	M	M	VL	Sultan Yaacoub	M	M	VL	Tal Znouh	ML	M	VL
Yehmor BG	L	L	ML	Zilaya	L	L	L				

### Zahle

Municipality	20-Feb	21-Feb	22-Feb	Municipality	20-Feb	21-Feb	22-Feb	Municipality	20-Feb	21-Feb	22-Feb
Aanjar (Haouch Mouss	M	M	VL	Ablah	M	M	VL	Ain Kfarzabad	M	M	VL
Ali-El-Nahri	M	M	VL	Bar Elias	M	M	VL	Bouarej	M	M	VL
Cheberqiyet Tabet	M	M	VL	Chtaura	M	M	VL	Deir El Ghazal	M	M	VL
Delhamiyet Zahle	M	M	VL	Ferzol	M	M	VL	Haouch El-Ghanam	M	M	VL
Haouch Es-Siyadeh	M	M	VL	Haouch Hala	M	M	VL	Haouch Mandara	M	M	VL

Haouch Qayssar	M	M	VL	Hezerta	M	M	VL	Hosh Moussa	M	M	VL
Jdita	M	M	VL	Kfarzabad	M	M	VL	Ksara	M	M	VL
Majdel Aanjar	M	M	VL	Makssi	M	M	VL	Massa	M	M	VL
Mazraat Er-Remtaniye	M	M	VL	Mrayjat Zahle	M	M	VL	Mzaraa Zahle	M	M	VL
Nabi Ayla	M	M	VL	Nasriyet Rizk	M	M	VL	Nasriyet Zahle	M	M	VL
Niha Zahle	M	M	VL	Ouadi Ed-Deloum	M	M	VL	Ouadi El-Arayech	M	M	VL
Qaa El Rim	M	M	VL	Qab Elias	M	M	VL	Qousaya	M	M	VL
Rhit	M	M	VL	Riyak	M	M	VL	Saadnayel	M	M	VL
Taal El-Akhdar	M	M	VL	Taalbeya	M	M	VL	Taanayel	M	M	VL
Talamara	M	M	VL	Tcheflik Edde Haouch	M	M	VL	Tcheflik Qiqano	M	M	VL
Terbol Zahle	M	M	VL	Touaite Zahle	M	M	VL	Zahle Aradi	M	M	VL
Zahle El-Berbara	M	M	VL	Zahle El-Maallaqa	M	M	VL	Zahle El-Midane	M	M	VL
Zahle Er-Rassiye	M	M	VL	Zahle Haouch El-Ouma	M	M	VL	Zahle Haouch El-Ouma	M	M	VL
Zahle Haouch Ez-Zara	M	M	VL	Zahle Maalaqa Aradi	M	M	VL	Zahle Mar Antonios	M	M	VL
Zahle Mar Elias	M	M	VL	Zahle Mar Gerios	M	M	VL	Zahle Saydet En-Naja	M	M	VL
Zebdoul	M	M	VL								

## Rachaiya

Municipality	20-Feb	21-Feb	22-Feb	Municipality	20-Feb	21-Feb	22-Feb	Municipality	20-Feb	21-Feb	22-Feb
Ain Arab Rachaiya	M	M	VL	Ain Ata	M	M	VL	Ain Harche	M	M	VL
Aqabe Rachaya	M	M	VL	Ayha	M	M	VL	Ayta El Fokhar	M	M	VL
Bakifa Rachaya	M	M	VL	Bakka	M	M	VL	Beit Lahya	ML	M	VL
Bireh Rachaiya	M	M	VL	Daher El Ahmar	M	M	VL	Deir El-Achayer	M	M	VL
Heloua Rachaiya	M	M	VL	Hoch El Qannabeh Rac	M	ML	VL	Kaoukaba Bou Arab	ML	M	VL
Kfar Danis	M	M	VL	Kfar Mechki	ML	ML	L	Kfar Qouq	M	M	VL
Kherbet Rouha	M	M	VL	Majdel Balhiss	ML	M	L	Mdoukha	M	M	VL
Mhaydseh Rachaiya	M	M	VL	Nabi Safa	ML	ML	L	Rachaiya	M	M	VL
Rafid Rachaiya	M	M	VL	Selsata (Mazraat Dei	M	M	VL	Tannoura	ML	M	VL
Yanta	M	M	VL								

## Beyrouth

### Beyrouth

Municipality	20-Feb	21-Feb	22-Feb	Municipality	20-Feb	21-Feb	22-Feb	Municipality	20-Feb	21-Feb	22-Feb
Achrafieh	M	M	M	Ain el-Mreisse	MH	M	M	Bachoura	MH	M	M
Beirut Central Distr	MH	M	M	Marfai	MH	M	M	Mazraa	M	M	M
Medaouar	M	M	M	Minet el-Hosn	MH	M	M	Mwssaitbeh	MH	M	M
Ras Beirut	MH	M	M	Rmeil	M	M	M	Saifi	M	M	M
Zqaq el-Blat	MH	M	M								



## نشرة الطقس الصادرة عن مصلحة الأرصاد الجوية بالمديرية العامة للطيران المدني

النشرة: المسائية

الجمعة : 19 شباط 2016

الحالة العامة : طقس متقلب يسيطر على الحوض الشرقي للمتوسط حيث يتأثر بالمنخفض الجوي "TIMA".

السبت: غائم جزئياً مع ضباب على المرتفعات واحتمال تساقط أمطار خفيفة ومتفرقة صباحاً وانخفاض ملحوظ بدرجات الحرارة .

الأحد: غائم جزئياً صباحاً مع رياح ناشطة تقارب الـ 70 كلم/س وانخفاض اضافي بدرجات الحرارة يتحول تدريجياً الى غائم مع أمطار متفرقة، تشتت مساءً وتكون مترافقة بعواصف رعدية ، تتساقط الثلوج اعتباراً من 1900 متر وما فوق. نحدّر من ارتفاع موج البحر حيث يقارب الـ 5 أمتار ليلاً.

الاثنين: غائم وممطر مع استمرار الانخفاض بدرجات الحرارة تتساقط الثلوج على ارتفاع 1600 متر وما فوق. يتحسن الطقس اعتباراً من المساء.

<u>الأحد</u>		<u>السبت</u>		<u>الجمعة</u>		درجات الحرارة المتوقعة	
20/10	22/9	21/12	23/10	25/9	27/9	صور	على الساحل
22/13		23/13		27/15		بيروت	
21/9		22/10		26/12		طرابلس	
15/8	15/6	17/10	17/8	22/15	22/14	بيصور	فوق الجبال
13/6		15/8		20/14		قرطبا	
-/-		-/-		-/-		فقرا	
6 / صفر		12 / 2		15 / 5		الأرز	
16/7	16/6	18/8	18/6	24/11	24/9	القرعون	في الداخل
15/8		17/10		22/14		مرجعيون	
16/6		18/6		24/9		زحلة	

الرياح السطحية: جنوبية غربية يتحول ليلاً الى جنوبية شرقية، سرعتها بين 10 و 35 كلم/س

الإنقشاع: متوسط، يسوء في الفترة المسائية.

الرطوبة النسبية على الساحل: بين 50 و 80 %.

حرارة سطح الماء: 19°م.

حال البحر: متوسط ارتفاع الموج

أي ما يعادل: 764 ملم زئبق

الضغط الجوي: 1016 hPa.

ساعة غروب الشمس: 17:25

ساعة شروق الشمس: 06:19

كمية الأمطار المسجلة حتى الساعة السادسة صباحاً (ت.ع)				
السنة الماضية حتى اليوم	المعدل العام	المجموع حتى اليوم	خلال 24 ساعة	المحطات
677.4 ملم	609ملم	376.4ملم	0 ملم	بيروت - المطار
768 ملم	620ملم	773.6ملم	0ملم	طرابلس
599.9 ملم	433ملم	298.1 ملم	0ملم	زحلة