

Lebanon Fire Risk Bulletin



CIVIL DEDEFENCE

Refer to cadast condition.

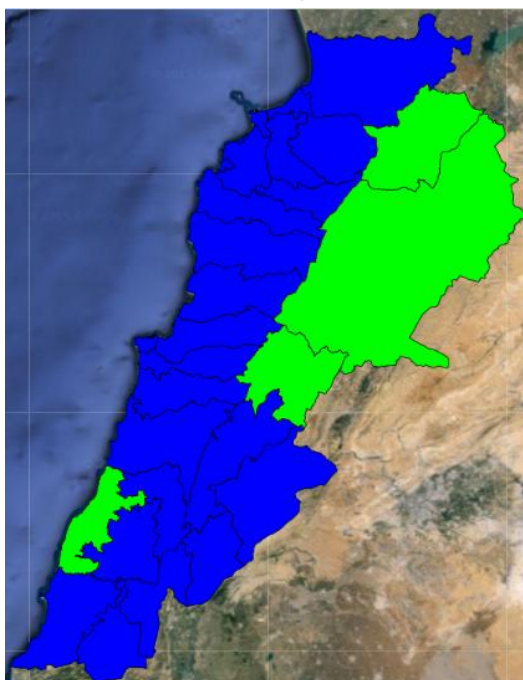
General description of potential fire risk situation

Symbol	Level of risk	Meaning and actions
VL	Very low	Very low fire risk. Controlled burning operations can be hardly executed due to high fuel moisture content. Normally wildfires self-extinguish.
L	Low	Low fire risk. Controlled burning operations can be executed with a reasonable degree of safety.
ML	Medium low	Medium-low fire risk. Controlled burning operations can be executed in safety conditions. All the fires need to be extinguished.
M	Medium	Medium fire risk. Controlled burning operations would be avoided. All the fires need to be very well extinguished.
M	Medium high	Controlled burning is not recommended. Open flame will start fires. Cured grasslands and forest litter will burn readily. Spread is moderate in forests and fast in exposed areas. Patrolling and monitoring is suggested. Fight fires with direct attack and all available resources.
H	High	Ignition can occur easily with fast spread in grass, shrubs and forests. Fires will be very hot with crowning and short to medium spotting. Direct attack on the head may not be possible requiring indirect methods on flanks. Patrolling and monitoring the territory is highly suggested.
E	Extreme	Ignition can occur also from sparks. Fires will be extremely hot with fast rate of spread. Control may not be possible during day due to long range spotting and crowning. Suppression forces should limit efforts to limiting lateral spread. Damage potential total. Patrolling and monitoring the territory is highly suggested.

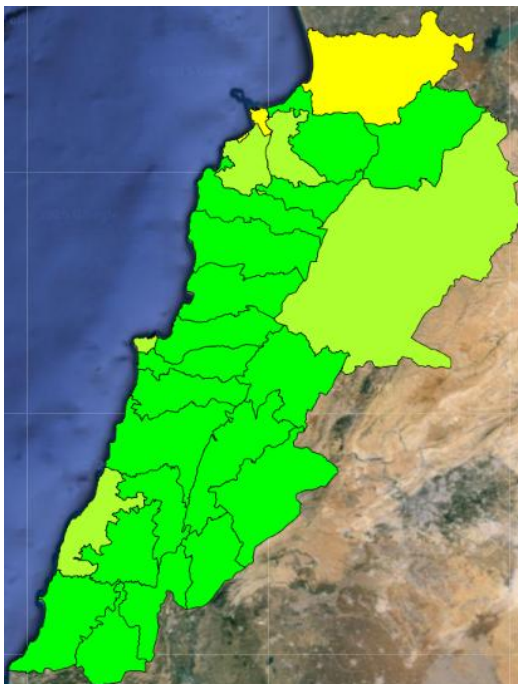
Beirut, 20 January 2016

FIRE RISK INDEX

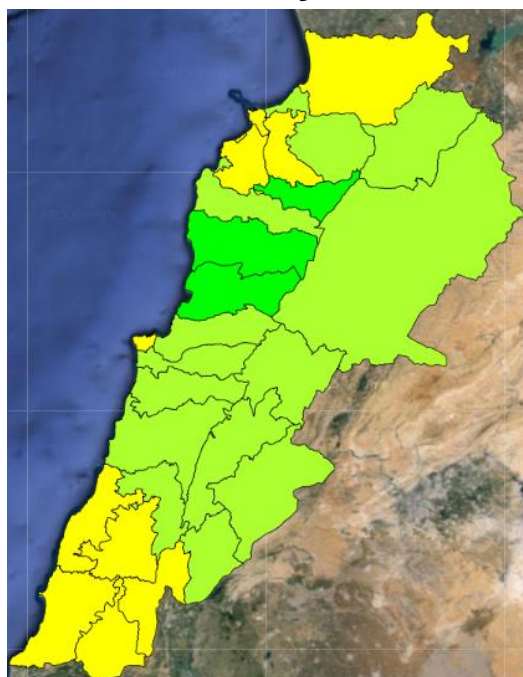
19 January 2016



20 January 2016



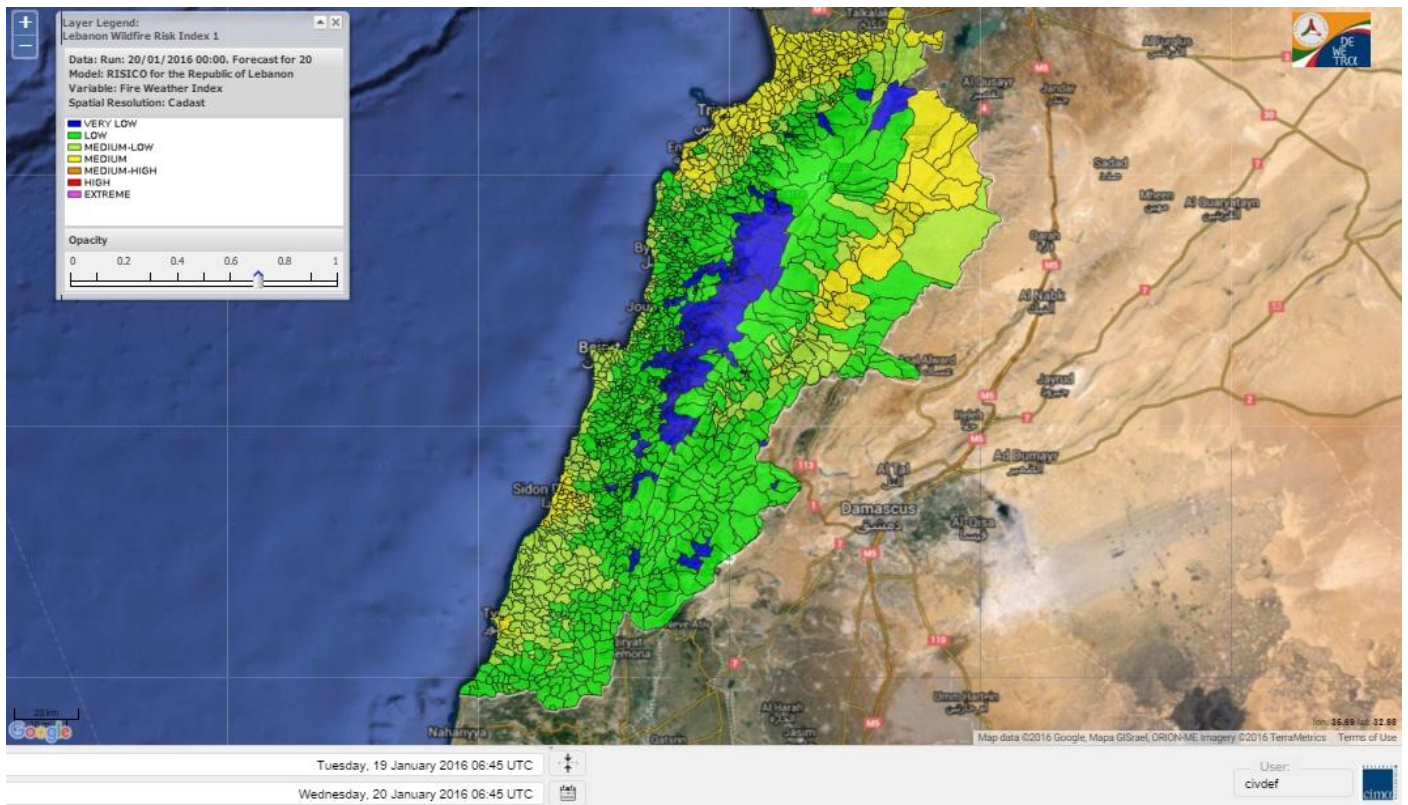
21 January 2016



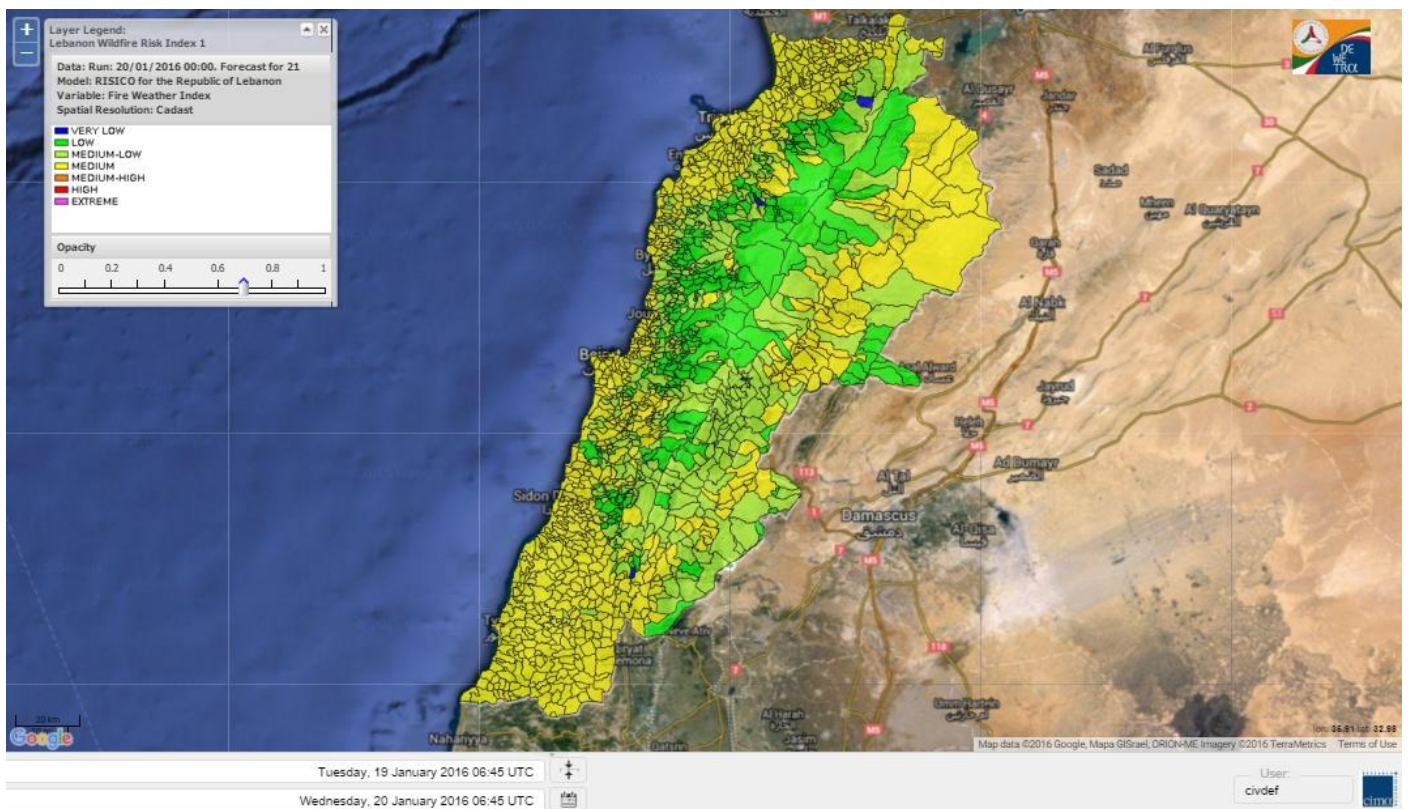
22 January 2016



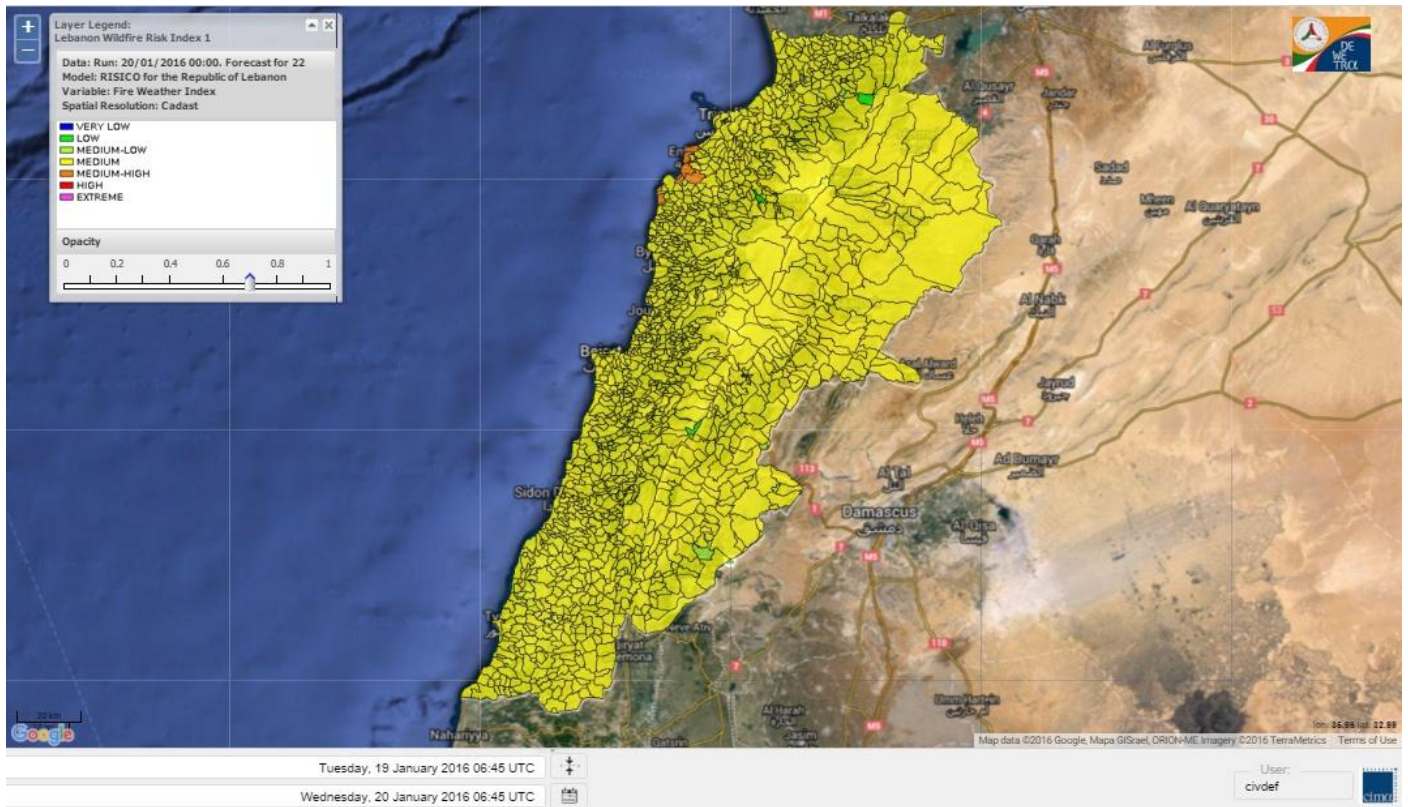
Lebanon for 20 January 2016



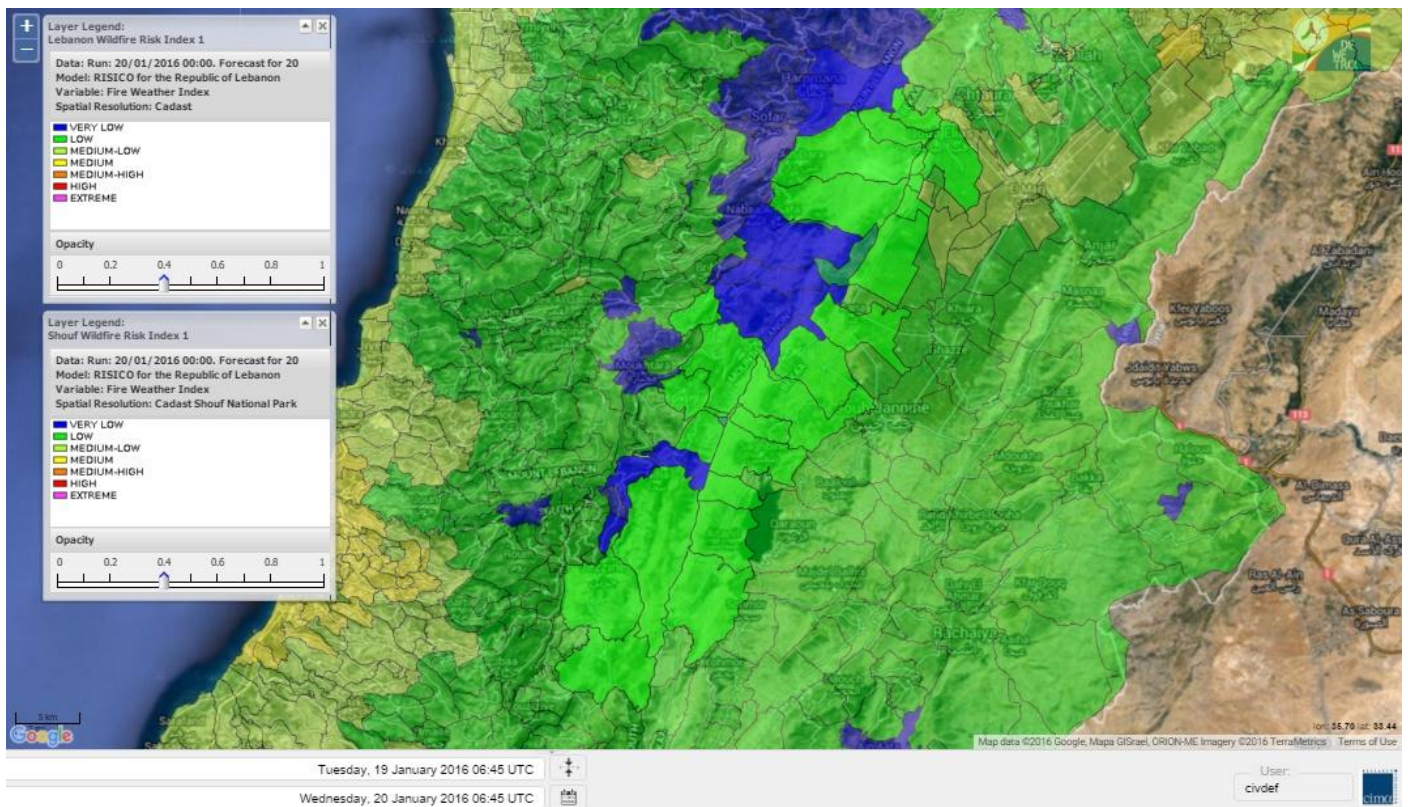
Lebanon for 21 January 2016



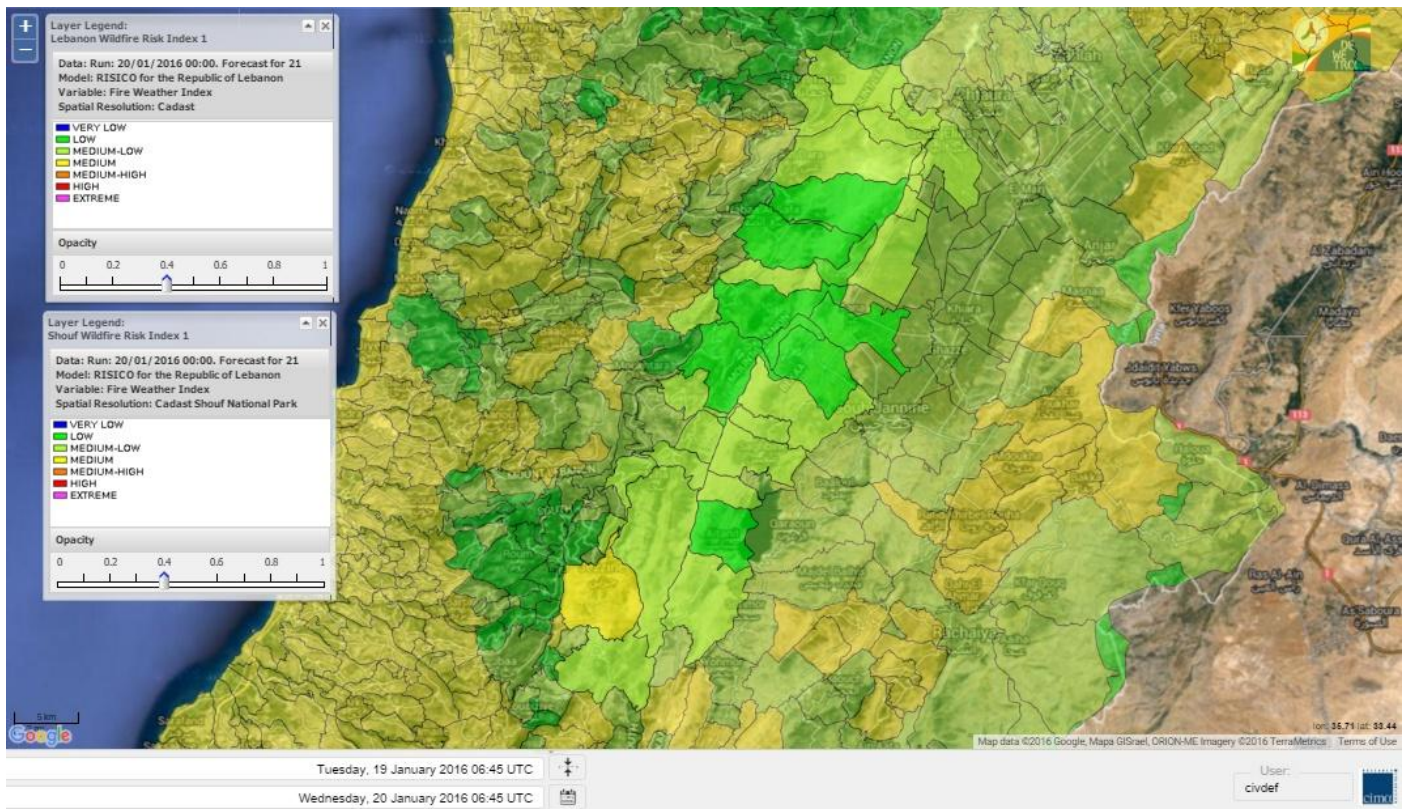
Lebanon for 22 January 2016



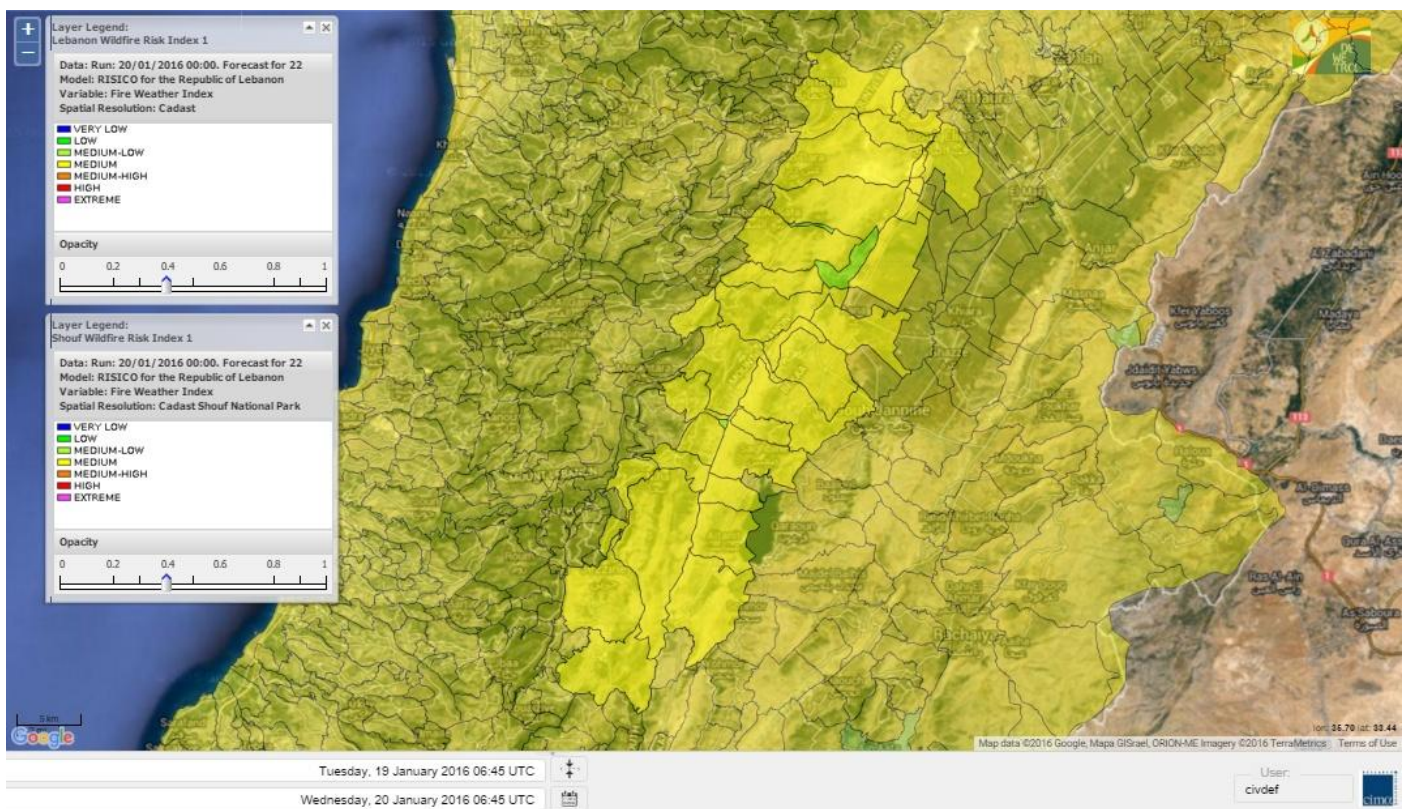
Shouf Biosphere Reserve Forecast for 20 January 2016



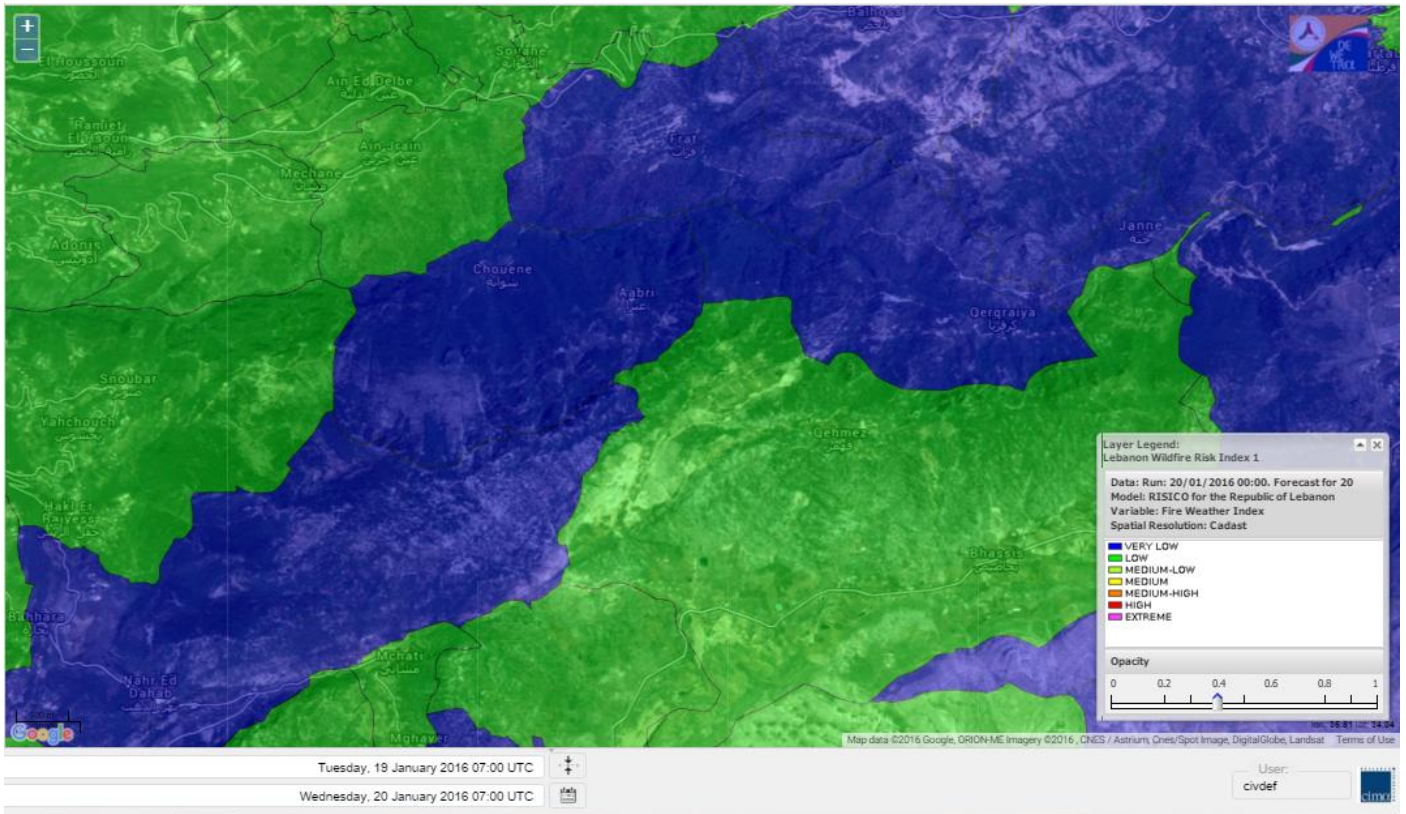
Shouf Biosphere Reserve Forecast for 21 January 2016



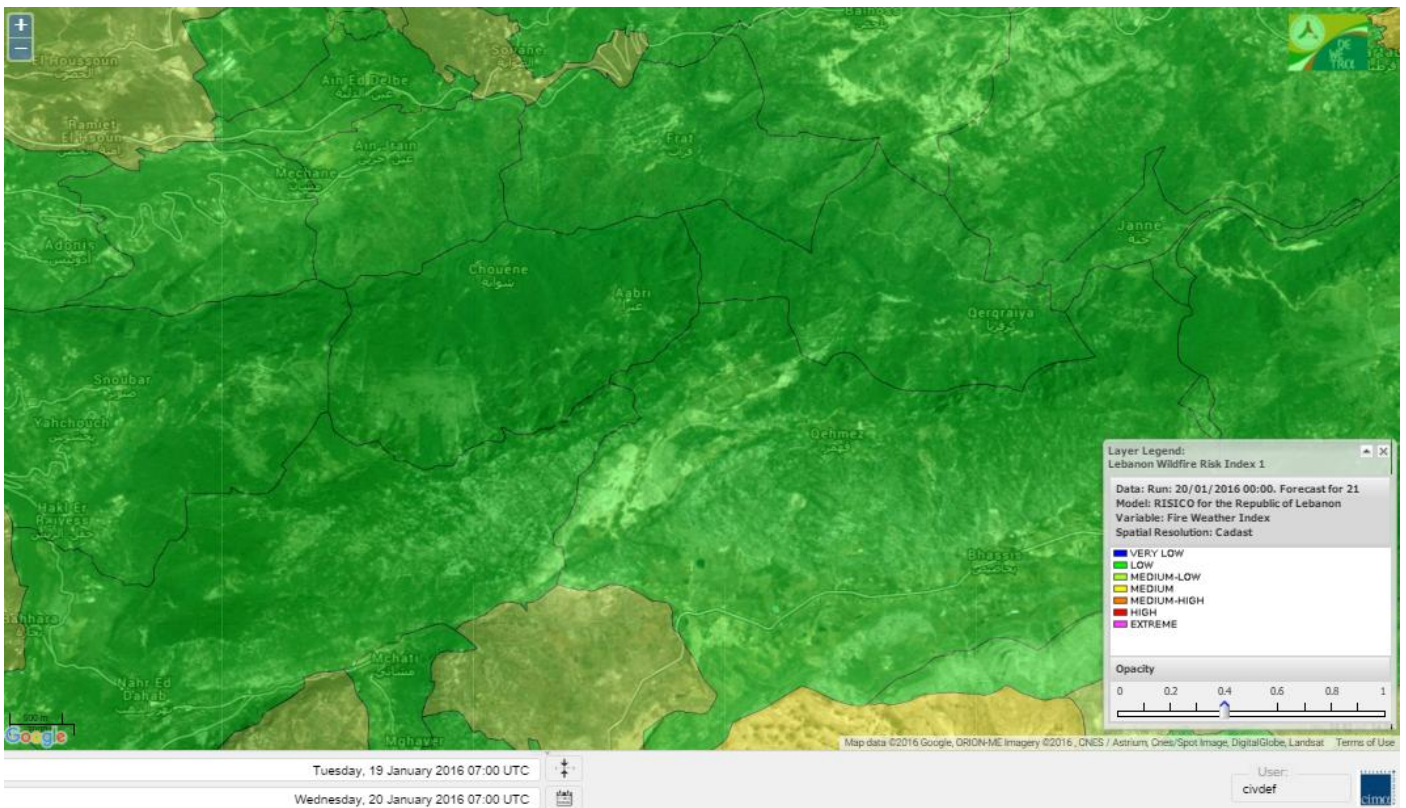
Shouf Biosphere Reserve Forecast for 22 January 2016



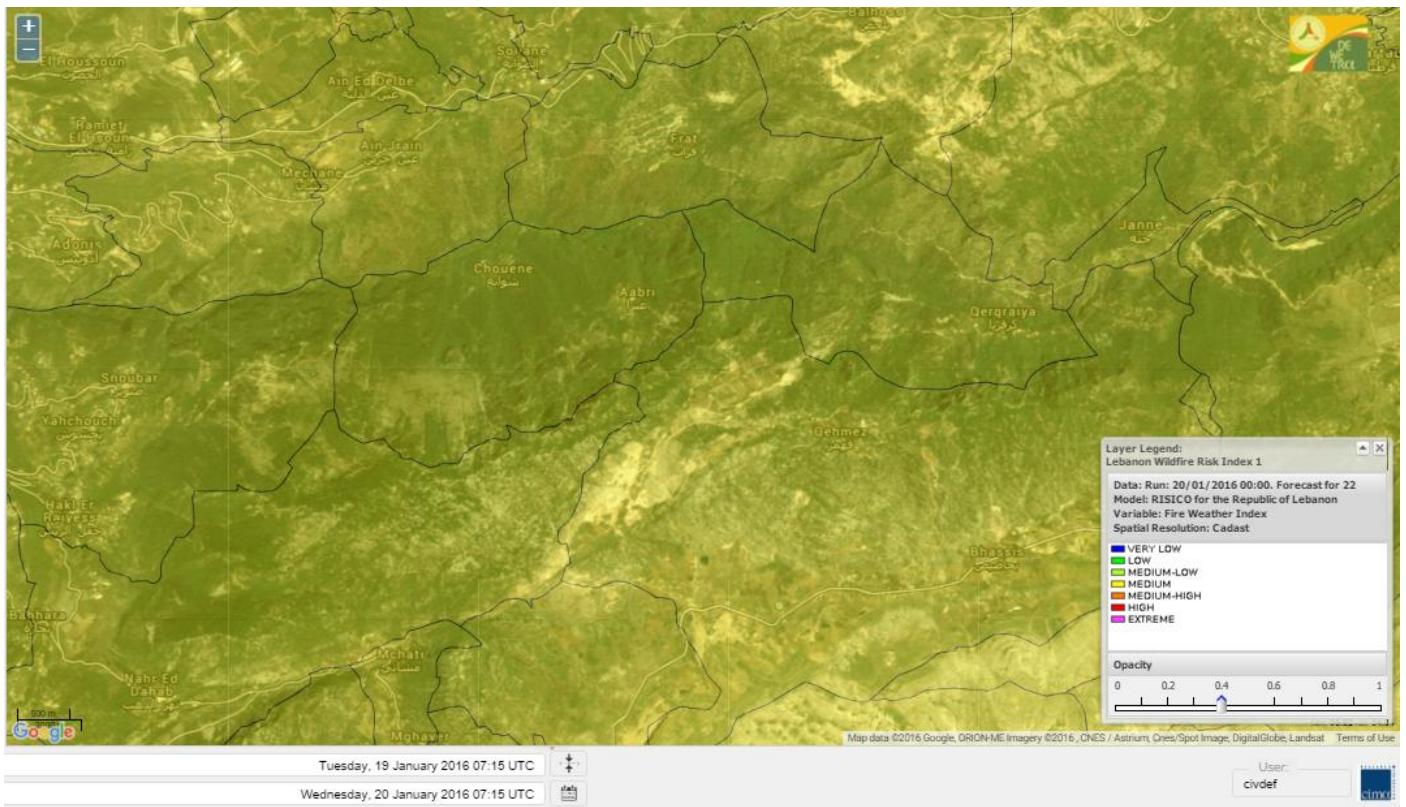
Jabal Moussa Reserve Forecast for 20 January 2016



Jabal Moussa Reserve Forecast for 21 January 2016



Jabal Moussa Reserve Forecast for 22 January 2016



Nord

Koura

Municipality	20-Jan	21-Jan	22-Jan	Municipality	20-Jan	21-Jan	22-Jan	Municipality	20-Jan	21-Jan	22-Jan
Aaba	M	M	M	Afsaddiq	M	M	M	Ain Ekrine	ML	M	M
Amioun	M	M	M	Anfeh	M	M	MH	Badbhoun	M	M	M
Barghoun	M	M	MH	Barsa	ML	M	M	Batroumine	M	M	M
Bdebba	ML	M	M	Bechmizine	M	M	M	Bednayel El-Koura	ML	M	M
Bhabbouch El-Koura	ML	M	M	Bkeftine	ML	M	M	Bnehran	L	ML	M
Bqaiia El-Koura	ML	M	M	Bsarma	ML	M	M	Btaaboura	M	M	M
Bterram	M	M	M	Btouratij	M	M	M	Bziza	ML	M	M
Dar Beehtar	M	M	M	Dar Chmezzine	M	M	M	Deddeh	ML	M	M
Deir El-Balamand	L	M	M	Fih	ML	M	M	Hraiche	M	M	MH
Ijdaabrine	ML	M	M	Kaftoun	ML	M	M	Kefraya El-Koura	M	M	MH
Kfarakka	ML	M	M	Kfarhata	ML	M	M	Kfarhazir	M	M	MH
Kfarkahel	ML	M	M	Kfarsaroun	ML	M	M	Kosba	ML	M	M
Mejdel el-Koura	ML	ML	M	Nakhle	ML	M	M	Qalhat	L	M	M
Ras Masqa	M	M	M	Rechdibbine	ML	M	M	Zakroun	ML	M	M
Zgharta El-Mtaouile	L	L	M								

Bcharre

Municipality	20-Jan	21-Jan	22-Jan	Municipality	20-Jan	21-Jan	22-Jan	Municipality	20-Jan	21-Jan	22-Jan
Aabdine	L	ML	M	Bane	L	ML	M	Barhelioun	L	L	M
Bazouone	VL	L	M	Becharre	L	L	M	Beit Menzer	L	ML	M
Billa	L	ML	M	Blaouza	L	M	M	Bqaa Kafra	VL	L	M
Bqerqacha	VL	L	M	Breissat	L	ML	M	Dimane	L	ML	M
Hadath El Jobbeh	L	ML	M	Hadchit	VL	L	M	Hasroun	VL	L	M
Mazraat Aassaf	VL	L	M	Mazraat Bani Saab	L	ML	M	Mchaa El-Jobbeh	VL	L	M
Metrit	L	ML	M	Moghr El-Ahoual	L	ML	M	Ouadi Qannoubine	VL	VL	L
Qanat	L	L	M	Qnayouer	VL	L	M	Tourza	L	ML	M

Batroun

Municipality	20-Jan	21-Jan	22-Jan	Municipality	20-Jan	21-Jan	22-Jan	Municipality	20-Jan	21-Jan	22-Jan
Aabrine	L	ML	M	Aalali	L	ML	M	Aartiz	L	L	M
Abdelli	L	ML	M	Ajdabra	L	ML	M	Assia	L	ML	M
Basbina	ML	M	M	Batroun	ML	M	MH	Bcheleh	L	ML	M
Bechtoudar	L	L	M	Beit Chlala	L	L	M	Beit Kassab	L	L	M
Bijdarfil	ML	M	M	Bqesmaya	L	ML	M	Chatine	L	ML	M
Chebtein	L	ML	M	Chekka	M	M	MH	Daael	L	ML	M
Dahr Abi Yaghi	L	ML	M	Daraya El-Batroun	ML	M	M	Deir Billa	L	L	M
Deir Kfifane	ML	M	M	Deir Mar Youhanna EL	L	L	M	Deir Mar Youssef Jra	L	ML	M
Douma	L	ML	M	Douq	L	L	M	Eddeh El-Batroun	L	M	M
Ftatah El-Batroun	L	L	M	Ghouma	L	ML	M	Hadtoun	L	ML	M
Hamat	L	M	M	Harbouna	L	L	M	Hardine	L	L	M
Helta	L	ML	M	Hery	M	M	MH	Jebba	L	L	M
Jrabta El-Batroun	L	ML	M	Jrane El-Batroun	ML	M	M	Kfar Aabida	L	M	M
Kfar Halda	L	L	M	Kfarb Shlaimane	L	L	M	Kfarhatna	L	ML	M
Kfarhay	ML	M	M	Kfarhelos	L	ML	M	Kfifane	ML	M	MH

Kfour El Arabi	L	ML	M	Koubba	ML	M	M	Kour	L	ML	M
Mar Mama	L	L	M	Masrah	L	L	M	Mehmarch	L	ML	M
Mrah Chdid	L	ML	M	Mrah El Ziyat	L	M	M	Mrah El-Hajj	L	L	M
Nahle El-Batroun	L	ML	M	Niha El-Batroun	L	ML	M	Oujah El-Hajjar	ML	M	M
Ouata Houb	VL	L	M	Qatnaaoun	L	M	M	Racha	L	ML	M
Rachana	L	ML	M	Rachkida	L	M	M	Ram El-Batroun	L	L	M
Ras Nahnach	L	M	M	Selaata	ML	M	MH	Sghar	L	ML	M
Smar Jbayl	L	M	M	Sourat El-Batroun	L	ML	M	Tannourine El-Faouqa	VL	L	M
Tannourine Et-Tahta	VL	L	M	Thoum	L	M	M	Toula El-Batroun	L	ML	M
Zan	L	ML	M								

Zgharta

Municipality	20-Jan	21-Jan	22-Jan	Municipality	20-Jan	21-Jan	22-Jan	Municipality	20-Jan	21-Jan	22-Jan
Aachach	M	M	M	Aalma	M	M	M	Aarde	M	M	M
Aintourine	L	M	M	Arabet Qozhaya	L	L	M	Arde	M	M	M
Arjis	ML	M	M	Asnoun	M	M	M	Ayto	L	ML	M
Basloukit	L	M	M	Bchannine	ML	M	M	Besebeel	M	M	M
Bhairret Toula	L	ML	M	Bnachee	ML	M	M	Boussit	M	M	M
Danha	M	M	M	Daraiya Zgharta	ML	M	M	Deir Jdeide	M	M	M
Ehden	L	M	M	Halan	M	M	M	Hariq Zgharta	M	M	M
Houakir	L	ML	M	Hraiqis	M	M	M	laal	ML	M	M
Ijbaa	L	M	M	Karm Saddeh	L	L	M	Kfarchakhna	ML	M	M
Kfardlaqous	M	M	M	Kfarfou	ML	M	M	Kfarhata Zgharta	M	M	M
Kfarhoura	ML	M	M	Kfarsghab	L	ML	M	Kfaryachit	M	M	M
Kfarzaina	M	M	M	Khaldiye	M	M	M	Mazraat Ajbeaa	M	M	M
Mazraat Et-Teffah	L	ML	M	Mazraat Jneid	M	M	M	Mejdlaiya Zgharta	M	M	M
Merh Kfarsghab	ML	M	M	Miryata	M	M	M	Miziara	L	ML	M
Mzraat Kefraya	M	M	M	Qorah Bach	M	M	M	Rachiine	M	M	M
Ras Kifa	ML	M	M	Sakhra	ML	M	M	Sebhel Zgharta	L	M	M
Serhel	L	L	M	Tallet Zgharta	ML	M	M	Toula Zgharta	L	ML	M
Zgharta	M	M	M								

Minieh-Denniye

Municipality	20-Jan	21-Jan	22-Jan	Municipality	20-Jan	21-Jan	22-Jan	Municipality	20-Jan	21-Jan	22-Jan
Aasaymout	L	L	M	Aaymar	L	ML	M	Aazki	ML	M	M
Ain El-Tineh-Miniyeh	L	L	M	Assoun	L	ML	M	Bakhaaoun	ML	M	M
Bchennata	L	M	M	Bechehhara	L	L	M	Beddawi	M	M	M
Behouaita	L	L	M	Beit El Foqss	L	L	M	Beit Haouik	M	ML	M
Beit Zoud	L	ML	M	Bekaasafrine	L	L	M	Borj El Yahoudiyeh	M	M	M
Bqarsouna	L	L	M	Btermaz	L	L	M	Debaael	L	L	M
Deir Ammar	M	M	M	Deir Nbouh	L	ML	M	Haouaret-Miniyeh	L	ML	M
Haql el Azimeh	L	L	M	Harf El Siyad	L	L	M	Hazmiye-Miniyeh	L	L	M
Izal	ML	M	M	Jarjour	VL	L	M	Jayroun	L	L	M
Kahf El-Malloul	L	ML	M	Karm El-Moher	L	ML	M	Kfar Binine	L	ML	M
Kfarchalane	ML	M	M	Kfarhabou	M	M	M	Kharroub-Miniyeh	ML	M	M
Mazraat El-Kreme	L	L	M	Mazraat Ketrane	L	L	M	Merkebta	M	M	M
Minyeh	M	M	M	Mrah El Sfirat	L	L	M	Mrah Sraj	L	ML	M
Mrebbine	L	L	M	Nabi Youcheaa	M	M	M	Nemrine	L	ML	M

Qarhaiya	ML	ML	M	Qarne	VL	L	M	Qarsita	L	L	M
Qattineh-Miniyeh	VL	L	M	Qemmamine	VL	L	M	Qraine	L	L	M
Raouda-Aadoua	M	M	M	Rihaniyet-Miniyeh	M	M	M	Sfireh	L	L	M
Sir Ed-Danniyeh	L	L	M	Tarane	L	ML	M	Terbol-Miniyeh	M	M	M
Zaghartaghriine	L	ML	M	Zouq Bhannine	M	M	M				

Nabatiye

Nabatiye

Municipality	20-Jan	21-Jan	22-Jan	Municipality	20-Jan	21-Jan	22-Jan	Municipality	20-Jan	21-Jan	22-Jan
Aabba	ML	M	M	Aazzi	L	M	M	Adchit El-Chqif	ML	M	M
Ain Bou Swar	L	M	M	Ain Kana	L	M	M	Ali El-TaHER	L	M	M
Ansar	ML	M	M	Arab Salim	L	M	M	Arnoun	L	M	M
Bfaroue	L	M	M	Breyqaah	ML	M	M	Charqiyeh	ML	M	M
Choukine	ML	M	M	Deir El Zahrani	ML	M	M	Doueir El-Nabatiyeh	ML	M	M
Habbouch El-Nabatiye	ML	M	M	Hamra El-Nabatiyeh	L	M	M	Harouf El-Nabatiyeh	ML	M	M
Hmaïle	L	M	M	Houmin El Faouqa	L	M	M	Houmin El Tahta	ML	M	M
Jarjouch	L	M	M	Jbaah El-Nabatiyeh	L	ML	M	Jebchit	ML	M	M
Kfar Djal El-Nabatiy	ML	M	M	Kfar Remmane	L	M	M	Kfar Sir	ML	M	M
Kfar Tebnit	ML	M	M	Kfarfila	L	M	M	Kfour El-Nabatieh	ML	M	M
Mayfadoun	ML	M	M	Mazraat Bsaffour	L	M	M	Mazraat Chalbaal	L	M	M
Mazraat Dmoul	ML	M	M	Mazraat El Khreibeh	L	M	M	Mazraat El-Bayad El-	ML	M	M
Mazraat Kfarjaouz	ML	M	M	Mazraat Qalaat Meiss	ML	M	M	Nabatiyeh El-Fawka	ML	M	M
Nabatiyeh Et-Tahta	ML	M	M	Namiriyeh	ML	M	M	Qaaqaaiyet El Jisr	L	M	M
Qossaibeh El-Nabatiy	ML	M	M	Roumine	L	M	M	Sarba El-Nabatieh	L	M	M
Sir El-Gharbiyeh	ML	M	M	Toul	ML	M	M	Yehmor El-Nabatiyeh	L	M	M
Zaoutar El Charqiyeh	L	M	M	Zaoutar El-Gharbiyeh	L	M	M	Zebdine El-Nabatiyeh	ML	M	M
Zefta	ML	M	M								

Hasbaiya

Municipality	20-Jan	21-Jan	22-Jan	Municipality	20-Jan	21-Jan	22-Jan	Municipality	20-Jan	21-Jan	22-Jan
Aain Jarfa	L	ML	M	Abou Qamha	L	M	M	Ain Qania	L	ML	M
Bourghos	L	M	M	Chebaa	L	ML	M	Chouaya Hasbaya	L	ML	M
Dellafeh	L	M	M	Fardiss Hasbaiya	L	M	M	Hasbaya	L	M	M
Hbariyeh	L	ML	M	Kaoukaba Hasbaiya	L	M	M	Kfar Chouba	L	ML	M
Kfar Hamam	L	ML	M	Kfeir El-Zait	L	ML	M	Khalwat Hasbaya	VL	L	M
Khreibet Hasbaiya	L	M	M	Majidiyeh Hasbaiya	L	M	M	Marj Ez-Zhour (Haouc	L	ML	M
Meri	L	M	M	Mimass	L	M	M	Rachaiya El-Fokhar	L	M	M
Salaiyeb	L	M	M								

Marjayoun

Municipality	20-Jan	21-Jan	22-Jan	Municipality	20-Jan	21-Jan	22-Jan	Municipality	20-Jan	21-Jan	22-Jan
Aalmane Marjaayoun	L	ML	M	Aamra	L	M	M	Adayseh Marjaayoun	L	M	M
Adchit El-Koussair	L	M	M	Ain Aarab Marjaayoun	L	M	M	Bani Haiyann	L	M	M
Blatt Marjaayoun	L	M	M	Blida	L	M	M	Borj El-Moulouk	L	M	M
Boueyda Marjaayoun	L	M	M	Deir Mimass	L	M	M	Deir Siriane	L	M	M
Dibbine	L	M	M	Ebel El Saqi	L	M	M	Houla	L	M	M
Houra	L	M	M	Kfar Kila	L	M	M	Khiam Marjaayoun	L	M	M

Klayaa	L	M	M	Majdel Selem	L	M	M	Marjaayoun	L	M	M
Markaba	L	M	M	Mays El-Jabal	L	M	M	Mazraat Doumiat	ML	M	M
Mazraat Sarada	L	M	M	Mhaibib	L	M	M	Qabrikha	L	M	M
Qantara	L	M	M	Rab El-Thalathine	L	M	M	Saouaneh Marjayoun	L	M	M
Talloussa	L	M	M	Taybeh Matjaayoun	L	M	M	Touline	L	M	M

Bent Jbail

Municipality	20-Jan	21-Jan	22-Jan	Municipality	20-Jan	21-Jan	22-Jan	Municipality	20-Jan	21-Jan	22-Jan
Ain-Ebel	L	M	M	Aitaroun	L	M	M	Aynata Bint Jbeil	L	M	M
Ayta El-Chaeb	L	M	M	Ayta El-Jabal	L	M	M	Beit Lif	L	M	M
Beit Yahoun	L	M	M	Bint Jbeil	L	M	M	Borj Qalaway	ML	M	M
Braachit	L	M	M	Chakra	L	M	M	Debel	L	M	M
Deir Antar	ML	M	M	Froun	L	M	M	Ghandouriyeh Bint Jb	L	M	M
Hanine	L	M	M	Hariss	ML	M	M	Hdatha	L	M	M
Jmeyjme	L	M	M	Kafra Bint Jbeil	L	M	M	Kfar Dounine	L	M	M
Khirbet Selm	L	M	M	Kounine	L	M	M	Maroun El Ras	L	M	M
Qalaway	L	M	M	Qaouzah	L	M	M	Qatmoun	L	M	M
Ramya Bint Jbeil	L	M	M	Rchaf	L	M	M	Rmeich	L	M	M
Safad Al Battikh	L	M	M	Salhaneh	L	M	M	Serbine	ML	M	M
Sultanieh Bint Jbeil	ML	M	M	Tibnine	L	M	M	Tiri	L	M	M
Yaroun	L	M	M	Yater	L	M	M				

Mont Liban

Jbail

Municipality	20-Jan	21-Jan	22-Jan	Municipality	20-Jan	21-Jan	22-Jan	Municipality	20-Jan	21-Jan	22-Jan
Aabeydat	L	L	M	Aalita	L	L	M	Aamchit	ML	M	M
Aarab El-Lahib	VL	L	M	Aarasta	VL	L	M	Adonis Jbeil	L	L	M
Afqa Jbeil	VL	L	M	Ain El Delbeh Jbeil	L	L	M	Ain El-Ghouayba	VL	L	M
Ain Jrain	L	L	M	Ain Kfah	L	M	M	Almat El Chemaliyat	L	ML	M
Almat El-Jenoubiya	L	L	M	Aqoura	VL	L	M	Bayzoun	L	ML	M
Bchille Jbeil	L	ML	M	Bechtlida	L	L	M	Behdaydat	L	ML	M
Beit Habbaq	L	M	M	Bejjeh	L	ML	M	Bekhaaz	L	M	M
Berbara Jbeil	ML	M	M	Bintael	L	ML	M	Birket Hjoula	L	L	M
Blatt Jbeil	L	ML	M	Boulhos	VL	L	M	Breyj Jbeil	L	L	M
Chamat	ML	M	M	Chikhane	ML	M	M	Chmout	L	ML	M
Eddeh Jbeil	L	M	M	Ehmej	L	ML	M	Fatre	L	L	M
Ferhet	L	ML	M	Fghal	L	ML	M	Frat	VL	L	M
Ghabat	VL	L	M	Ghalboun	L	ML	M	Gharzouz	ML	M	M
Ghofrine	L	M	M	Habil	VL	L	M	Halate	L	ML	M
Haqel	L	L	M	Hbaline	L	M	M	Hboub	L	ML	M
Hdeine	VL	ML	M	Hema Er-Rehban	L	M	M	Hema Mar Maroun Aann	VL	M	M
Hjoula	L	L	M	Hosrayel	ML	M	M	Hsarat	L	M	M
Hsoun	L	ML	M	Jaj	L	ML	M	Janne	VL	L	M
Jbeil	ML	M	M	Jeddeyl Jbeil	ML	M	M	Jlisse	L	L	M
Jouret El-Qattine	L	L	M	Kfar Baal Annaya	L	L	M	Kfar Kidde	L	M	M
Kfar Kouas	L	L	M	Kfar Mashoun	ML	M	M	Kfoun	L	ML	M

Kharbe Jbeil	L	ML	M	Laqlouq	L	M	M	Lassa	VL	L	M
Lehfed	L	L	M	Maad	L	M	M	Mar Sarkis	L	M	M
Mastita	ML	M	M	Mayfouq	L	L	M	Mazraat El Siyad	L	M	M
Mazraat El-Maaden	L	L	M	Mechane	L	L	M	Mechmech Jbeil	L	L	M
Mehrin	L	M	M	Mejdel El-Akoura	VL	L	M	Mghayreh Jbeil	VL	ML	M
Mounsef	ML	M	M	Nahr Ibrahim	ML	M	M	Qahmez	L	L	M
Qartaba	VL	L	M	Qartaboun	ML	M	M	Qattara Jbeil	L	L	M
Qorqraya	VL	L	M	Ramout	L	ML	M	Ras Osta	L	L	M
Rihane Jbeil	ML	M	M	Sakiet El-Khayt	L	ML	M	Saqi Richmaya	L	ML	M
Sebrine	L	L	M	Seraita	VL	L	M	Souane Jbeil	L	ML	M
Tadmor	L	ML	M	Tartej	L	ML	M	Torzaiya	L	ML	M
Yanouh Jbeil	VL	L	M	Zibidine Jbeil	L	ML	M				

El Metn

Municipality	20-Jan	21-Jan	22-Jan	Municipality	20-Jan	21-Jan	22-Jan	Municipality	20-Jan	21-Jan	22-Jan
Aain El-Qabu	VL	L	M	Aain El-Qach	L	ML	M	Aain El-Teffaha	L	ML	M
Aain el-Safssaf El-M	L	L	M	Abou Mizane	L	ML	M	Ain Aar	ML	M	M
Ain Alaq	L	ML	M	Ain El-Kharroube	L	M	M	Ain El-Sendianeh	L	ML	M
Ain El-Zeitoune	VL	L	M	Ain Saadeh	L	M	M	Aintoura El-Matn	VL	ML	M
Amaret Chalhoub	ML	M	M	Antelias	ML	M	M	Atchaneh	L	ML	M
Ayroun	L	ML	M	Baabdat	VL	L	M	Baouchariyeh	ML	M	M
Baskinta	VL	L	M	Beit Chabab	L	ML	M	Beit El-Chaar	ML	M	M
Beit El-Kekko	ML	M	M	Beit Mery	L	ML	M	Bhersaf	L	ML	M
Bikfaya	L	ML	M	Biyakout	L	M	M	Bnabil	VL	L	M
Bourj Hammoud	ML	M	M	Bqennaya	L	M	M	Broummana El-Matn	L	ML	M
Bsalim	L	M	M	Bsifrine	VL	L	M	Bteghrine	VL	L	M
Chaouiye	L	ML	M	Chouaya El-Matn	L	ML	M	Choueir	L	ML	M
Chrine	L	L	M	Dahr El Sawan El-Mat	L	ML	M	Daychouniyeh	L	M	M
Dbayeh	ML	M	M	Deir Chamra	VL	L	M	Deir Mar Abda el Mch	L	M	M
Deir Mar Roukouz	L	M	M	Deir Tamiche	L	M	M	Dik El-Mehdi	L	M	M
Dikwaneh	ML	M	M	Douar El-Matn	L	ML	M	Fanar	L	M	M
Fraike	L	ML	M	Haret El-Ballaneh	L	M	M	Hbous	L	M	M
Himlaya	L	ML	M	Jal El Did	ML	M	M	Jdeideh El-Metn	L	M	M
Jouar El-Matn	L	L	M	Jouret El-Ballout	L	M	M	Kaaqour	VL	L	M
Kfar Aaqab	VL	L	M	Kfertay El-Matn	VL	ML	M	Khenchara	VL	L	M
Khillet El-Mtain	L	L	M	Konnabat Broummana	L	ML	M	Konnabat Salima	VL	L	M
Machraah El-Matn	VL	L	M	Majdel Tarchich	L	ML	M	Majzoub	L	M	M
Mansouriyeh El-Metn	L	M	M	Mar Boutros Karm Et-	L	L	M	Mar Chaya et Mzekke	L	ML	M
Mar Moussa Ed-Douar	L	L	M	Marjaba	VL	ML	M	Masqa	L	ML	M
Mayasse	L	ML	M	Mazraat Deir Aoukar	L	M	M	Mazraat El-Hadirat	L	M	M
Mazraat Yachouh	ML	M	M	Mchikha	VL	L	M	Menqlet Mezher	L	M	M
Mhaydseh Matn	L	ML	M	Mkalles	L	M	M	Mrouj	L	M	M
Mtain	VL	L	M	Mtayleb	L	M	M	Nabay	L	M	M
Naccache	L	M	M	Ouadi Chahine	L	L	M	Ouadi El-Karm El-Mat	VL	L	M
Ouata El-Mrouj	VL	ML	M	Ouyoun El-Matn	VL	L	M	Qornet Chehwan	L	M	M
Qornet El-Hamra	L	M	M	Roumieh	L	ML	M	Sfeilet Bikfaya	L	L	M
Sinn El-Fil	ML	M	M	Zabbougha	VL	L	M	Zalqa	ML	M	M

Zarououn	L	L	M	Zekrite	L	M	M	Zighrine El-Matn	L	ML	M
Zouk El-Khrab	ML	M	M								

Chouf

Municipality	20-Jan	21-Jan	22-Jan	Municipality	20-Jan	21-Jan	22-Jan	Municipality	20-Jan	21-Jan	22-Jan
Aalmane El-Chouf	M	M	M	Aammiq El-Chouf	L	ML	M	Ain Ouzein	VL	L	M
Ain Qani	VL	ML	M	Ain Zhalta	VL	L	M	Ainbal	L	ML	M
Amateur	L	ML	M	Anout	L	M	M	Atrine	L	ML	M
Baadarane	L	ML	M	Baaqline	L	M	M	Baasir	ML	M	M
Barja	ML	M	M	Barouk	VL	L	M	Bater	VL	ML	M
Batloun	L	ML	M	Bayqoun	L	M	M	Bchetfine	L	M	M
Beiteddine	L	ML	M	Benouati Ech-Chouf	L	ML	M	Berjein	L	ML	M
Bireh et Mtalleh	L	M	M	Biret El-Chouf	L	M	M	Bkechtine Ouel Mchei	L	L	M
Bkifa El-Chouf	L	ML	M	Botme	L	L	M	Bqaiaa Ech-Chouf	L	ML	M
Bsaba El-Chouf	L	M	M	Chammis El-Chouf	ML	M	M	Chehim	ML	M	M
Chemaarine	L	L	M	Chourit	L	ML	M	Daher El-Chouf	L	ML	M
Dalhoun	ML	M	M	Damour	ML	M	M	Daraya El-Chouf	L	ML	M
Deir El-Moukhalles	L	ML	M	Deir Baba	L	M	M	Deir Dourit	L	ML	M
Deir El-Qamar	L	ML	M	Deir Kouche	L	ML	M	Dibbieh	L	L	M
Dmit	L	M	M	Fouara Jaafar	L	ML	M	Fraidis El-Chouf	VL	ML	M
Ghabet Jaafar	L	M	M	Gharife	L	ML	M	Haret Jandal	L	ML	M
Hasrout	L	M	M	Jadra	ML	M	M	Jahlieh	L	ML	M
Jbeih El-Chouf	VL	ML	M	Jdeidet El-Chouf	VL	ML	M	Jiyeh	ML	M	M
Jleilyeh	L	M	M	Jmailiyeh	ML	M	M	Joun	L	M	M
Kahlounie El-Chouf	L	M	M	Ketermaya	ML	M	M	Kfar Faqoud	L	ML	M
Kfar Hamal	ML	M	M	Kfar Him	L	M	M	Kfar Katra	L	ML	M
Kfar Niss	L	M	M	Kfar hay	L	M	M	Kfarnabrakh	L	M	M
Khirbet Bisri	L	L	M	Knayse El-Chouf	L	ML	M	Maaniyeh	ML	M	M
Maasser Beiteddine	VL	ML	M	Maasser El-Chouf	L	L	M	Majdalouna	L	M	M
Majdel El-Meouch	L	M	M	Mazboud	ML	M	M	Mazmoura	L	M	M
Mazraat El Chouf	L	ML	M	Mazraat El Daher	L	ML	M	Mazraat El-Douair	VL	L	M
Mechref	L	ML	M	Mghairie	ML	M	M	Mghayrie El-Chouf	L	ML	M
Moukhtara	VL	ML	M	Mrusti	L	ML	M	Mtolle	L	M	M
Naameh	ML	M	M	Niha El-Chouf	L	ML	M	Ouadi Abou Youssef	VL	L	M
Ouadi Ed-Deir	L	M	M	Ouadi El-Sit	L	M	M	Ouadi bnehlay	L	ML	M
Qraibeh	L	ML	M	Qreiaa	L	L	M	Rmayle El-Chouf	M	M	M
Semqaniyeh	L	M	M	Sibline	ML	M	M	Sirjbeil	L	M	M
Warhanieh	VL	ML	M	Werdaniyeh	ML	M	M	Zaarourieh	L	M	M

Baabda

Municipality	20-Jan	21-Jan	22-Jan	Municipality	20-Jan	21-Jan	22-Jan	Municipality	20-Jan	21-Jan	22-Jan
Abadiyeh	L	ML	M	Ain Mouaffaq	L	ML	M	Araiya	L	ML	M
Arbaniyeh	VL	L	M	Arsoun	VL	L	M	Baabda	L	M	M
Baalchmey	L	M	M	Bmaryam	VL	L	M	Bourj El-Brajneh	ML	M	M
Boutchay	L	M	M	Bsaba Baabda	L	M	M	Btekhney	VL	L	M
Btibyat	VL	L	M	Bzbeddine	VL	L	M	Chbeniyeh	VL	ML	M
Chiyah	ML	M	M	Chmeisset Baabda	VL	L	M	Chouit	L	ML	M
Deir El-harf	L	ML	M	Deir Khouna	L	ML	M	Dlaybeh	VL	L	M

Falougha	VL	ML	M	Furn El-Chebbak	ML	M	M	Hadath Beyrouth	ML	M	M
Halaliyeh Baabda	L	ML	M	Hammana	VL	ML	M	Haret El Sett	L	ML	M
Haret Hamze	L	L	M	Haret Hreik	ML	M	M	Hasbaiya El-Metn	VL	L	M
Jouar El-Hoz	VL	L	M	Jouret Arsoun	VL	L	M	Kfar Chima	L	M	M
Kfar Selouane	VL	L	M	Khalouat Baabda	VL	ML	M	Kneisset Baabda	VL	L	M
Laylakeh	ML	M	M	Louayzeh Baabda	L	M	M	Merdache	L	M	M
Mzairaa Baabda	L	L	M	Ouadi Chahrour El Ol	L	M	M	Ouadi Chahrour El So	L	ML	M
Qalaa Baabda	VL	ML	M	Qhraybe Baabda	VL	L	M	Qobbayaa	VL	ML	M
Qornayel	VL	L	M	Qortada	VL	L	M	Qrayeh Baabda	VL	ML	M
Qsaibeh Baabda	VL	ML	M	Qtale Baabda	VL	L	M	Ras El Metn	L	ML	M
Ras El-Haref	VL	ML	M	Rouayset El-Ballout	L	ML	M	Salima Baabda	VL	L	M
Tahouitat El Ghadir	ML	M	M	Tarchich	L	L	M	Zandouqa	VL	L	M

Aley

Municipality	20-Jan	21-Jan	22-Jan	Municipality	20-Jan	21-Jan	22-Jan	Municipality	20-Jan	21-Jan	22-Jan
Abey	L	M	M	Aghmid	VL	L	M	Ain Dara	L	ML	M
Ain Drafil	L	ML	M	Ain El Halazoun	L	M	M	Ain El-Rmmaneh	L	L	M
Ain Jedideh	L	M	M	Ain Ksour	L	M	M	Ain Onoub	L	ML	M
Ain Traz	L	M	M	Ainab	L	ML	M	Aley	L	M	M
Aramoun	L	M	M	Aytat	L	M	M	Azouniyeh	VL	ML	M
Baawerta	L	ML	M	Badghan Oua Wadi Bad	VL	ML	M	Bassatine	L	M	M
Bayssour	L	M	M	Bchamoun	L	M	M	Bdadoun	L	ML	M
Behouara	L	ML	M	Bennay	L	M	M	Bhamdoun El-Dayaa	L	M	M
Bhamdoun El-Mhatta	L	M	M	Bkhechtey	L	M	M	Bleibel	L	ML	M
Bmakine	L	M	M	Bmehray	L	L	M	Bouzrid	L	ML	M
Bserrine	L	M	M	Bsous	L	L	M	Btalloun	L	M	M
Btater	L	M	M	Chanay	L	M	M	Charoun	VL	ML	M
Chartoun	L	ML	M	Chemlane	L	ML	M	Choueifat El-Aamrous	ML	M	M
Choueifat El-Oumara	ML	M	M	Choueifat El-Quoubbe	ML	M	M	Dakkoun	L	M	M
Deir Qoubel	L	ML	M	Dfoun	L	M	M	Douair El Remmaneh	L	ML	M
Ghaboun	L	ML	M	Habramoun	L	ML	M	Homs Oua Hama	L	M	M
Houmal	L	ML	M	Jisr El Qadi	L	M	M	Kehaleh	L	L	M
Keyfoun	L	M	M	Kfar Aamey	L	M	M	Kommatyeh	L	M	M
Maasrati	L	M	M	Majdel Baana	L	M	M	Mansourieh et Ain El	ML	M	M
Mazraat El-Nahr	L	ML	M	Mchakhte	VL	L	M	Mecherfeh	L	ML	M
Mejdlaya	L	M	M	Mrayjat	VL	ML	M	Ramliyah	L	ML	M
Rechmaya	L	M	M	Rejmeh	L	ML	M	Remhala	L	M	M
Rouaysset El Neemane	L	M	M	Saoufar	VL	M	M	Selfaya	L	ML	M
Sirhmoul	L	M	M	Souq El Ghareb	L	M	M	Taazanieh	L	M	M

Kesrouane

Municipality	20-Jan	21-Jan	22-Jan	Municipality	20-Jan	21-Jan	22-Jan	Municipality	20-Jan	21-Jan	22-Jan
Achkout	L	L	M	Adma Oua Dafneh	L	M	M	Ain Ed-Delbe Kesroua	L	L	M
Ain El-Rihane	L	M	M	Aintoura Kesrouane	L	M	M	Ajaltoun	L	ML	M
Akaybeh Kesrouane	ML	M	M	Aramoun Kesrouane	L	ML	M	Azra ouel Ozor	L	ML	M
Ballouneh	L	L	M	Batha	VL	ML	M	Bekaatat Achkout	L	ML	M
Bekaatat Kanaan	VL	L	M	Bizhel	L	ML	M	Bouar	ML	M	M
Bqaatouta	VL	ML	M	Bqaq Ed-Dine	ML	M	M	Bzommar	L	ML	M

Chahtoul	L	ML	M	Chnaniir	L	ML	M	Chouan	VL	L	M
Daraya Kesrouane	L	L	M	Darououn	L	ML	M	Deir Baqlouch	L	ML	M
Dlebta	VL	L	M	Eghbeh	VL	L	M	Faraya	VL	L	M
Fatka	L	ML	M	Feytroun	VL	L	M	Ghazir	L	ML	M
Ghbaleh Kesrouane	L	ML	M	Ghedrass	L	L	M	Ghosta	L	ML	M
Ghynéh	L	ML	M	Harharaya w Kattine	L	ML	M	Harissa Kesrouane	L	M	M
Hayata	L	ML	M	Hosein	L	L	M	Hrajel	L	M	M
Jdeideh Ghazir	L	ML	M	Jeita	L	ML	M	Jounieh Ghadir	L	M	M
Jounieh Haret Sakhr	ML	M	M	Jounieh Salel Alma	L	M	M	Jounieh Sarba	ML	M	M
Jouret Bedrane	L	ML	M	Jouret Mhad	L	L	M	Jouret Termos	L	ML	M
Kfar Debiane	VL	L	M	Kfar Tay Kesrouane	VL	L	M	Kfar Yassine	ML	M	M
Kfour Kesrouane	L	ML	M	Kharayeb Nahr Ibrahi	L	ML	M	Klayaat Kesrouane	L	L	M
Maarab	VL	L	M	Maaysra Kesrouane	L	ML	M	Mayrouba	L	ML	M
Mazraat Er-Ras	L	M	M	Mazraat Mrah El-Mir	L	L	M	Mchaa El Ftouh	VL	L	M
Mchaa Faraya	VL	ML	M	Mchaa Kfar Dibiane	VL	L	M	Mghaer	VL	L	M
Mradiyah	L	ML	M	Nahr Ed-Dahab	VL	L	M	Nammoura Kesrouane	L	L	M
Ouata El Jaouz	L	ML	M	Ouata Sillam	M	M	M	Raachine	VL	L	M
Rayfoun	L	ML	M	Safra Kesrouane	ML	M	M	Shayle Kesrouane	L	ML	M
Tabarja	ML	M	MH	Yahchouch	L	L	M	Zaaytreh	L	ML	M
Zeytoun	L	ML	M	Zouk Mikael	ML	M	M	Zouk Mosbeh	ML	M	M

Baalbek_Hermel

Baalbek

Municipality	20-Jan	21-Jan	22-Jan	Municipality	20-Jan	21-Jan	22-Jan	Municipality	20-Jan	21-Jan	22-Jan
Aadous	M	M	M	Aamchki	L	ML	M	Aarsal	ML	M	M
Ain Baalbek	M	M	M	Ain Bourday	ML	M	M	Ain El-Benye	L	L	M
Ain El-Jaouz Baalbek	L	L	M	Ain El-Siya Chadoura	L	L	M	Al Khodr Baalbek	ML	M	M
Al Nabi Chit	ML	M	M	Aynata Baalbek	L	L	M	Baalbek	M	M	M
Bachwat	L	L	M	Barqa	L	L	M	Bednayeil Baalbak	L	L	M
Beit Chama	L	M	M	Bijjaje	M	M	M	Bouday	L	ML	M
Brital	L	ML	M	Btadi	L	ML	M	Chaat	M	M	M
Chaibe	L	L	M	Chlifa	ML	M	M	Chmestar	L	ML	M
Dar El-Oussa	L	L	M	Deir El-Ahmar	L	ML	M	Deir Mar Maroun Baal	M	M	M
Douris	M	M	M	Fakiha	M	M	M	Hadath Baalbek	L	ML	M
Ham	L	L	M	Haour Taala	ML	M	M	Hizzine	ML	M	M
Hlebta	L	M	M	Hosh Barada	ML	M	M	Hosh El Dahab	M	M	M
Hosh El Snid	ML	M	M	Hosh El-Nabi	ML	M	M	Hosh El-Rafiq	ML	M	M
Hosh Tal Safiya	M	M	M	Hrebta	ML	ML	M	laat	M	M	M
Jebaa	L	L	M	Jenta	ML	M	M	Kfar Dabach	ML	M	M
Kfar Dane	L	M	M	Khraibeh El-Hermel	M	M	M	Khreibet Baalbek	ML	M	M
Kneisset Baalbek	ML	M	M	Labueh	M	M	M	Maarboun	L	L	M
Majdaloun	M	M	M	Maqneh	M	M	M	Mazraat Beit Mcheik	VL	L	M
Misraya	ML	M	M	Mograq	M	M	M	Nabha El-Damdoum	L	L	M
Nabi Chbay	L	L	M	Nabi Osman	M	M	M	Nahleh baalbek	L	ML	M
Ouadi El-Oss	L	M	M	Qaa Baayoun	M	M	M	Qaa Jouar Maqiye	M	M	M
Qaa Ouadi El-Khanzir	M	M	M	Qah Baalbek	M	M	M	Qarha Baalbek	ML	ML	M

Qsarnaba	ML	M	M	Ram Baalbek	L	L	M	Ras Baalbek El Sahl	M	M	M
Ras Baalbek El-Charq	M	M	M	Riha	ML	ML	M	Saaide	ML	M	M
Sbouba	M	M	M	Seriine El-Tahta	ML	M	M	Slouqi	L	L	M
Taiba Baalbek	M	M	M	Talia	ML	M	M	Taraiya	L	ML	M
Temnin El Fawqa	ML	M	M	Temnin El-Tahta	ML	M	M	Tfail	L	L	M
Yahfoufa	ML	M	M	Yammouneh	L	L	M	Younine	M	M	M
Zboud	M	M	M								

Hermel

Municipality	20-Jan	21-Jan	22-Jan	Municipality	20-Jan	21-Jan	22-Jan	Municipality	20-Jan	21-Jan	22-Jan
Charbine El-Hermel	VL	L	M	Hermel Jbab	L	L	M	Hermel	M	M	M
Maaysra El-Hermel	L	M	M	Michaa Mrajhine	L	ML	M	Ouadi Faara	L	L	M
Ras Baalbek - Ouadi	M	M	M	Ras Baalbek El Gharb	L	ML	M	Zighrine	L	L	M

Akkar

Akkar

Municipality	20-Jan	21-Jan	22-Jan	Municipality	20-Jan	21-Jan	22-Jan	Municipality	20-Jan	21-Jan	22-Jan
Aain Tinta	M	M	M	Aaiyat	M	M	M	Aakkar El-Aatiqa	L	ML	M
Aamar Akkar	M	M	M	Aamar El Baykat	M	M	M	Aamayer	M	M	M
Aamriyet Akkar	M	M	M	Aandqet	ML	M	M	Aarmeh	ML	M	M
Aarqa	M	M	M	Aawaynat	M	M	M	Aayoun Akkar	M	M	M
Abboudiye	M	M	M	Ain El-Zeit	M	M	M	Ain Yaaqoub	L	ML	M
Akroum	ML	ML	M	Aridet Cheikh Zennad	M	M	M	Baldeh w Mazraat Bal	M	M	M
Barcha	M	MH	M	Bardeh	M	M	M	Bebnine	M	M	M
Beino	M	M	M	Beit Ayoub	M	M	M	Beit El-Haouch	M	M	M
Beit Mellat	M	M	M	Beit Younes	L	ML	M	Berbara Akkar	M	M	M
Berqayel	M	M	M	Bezbina	L	ML	M	Bireh Akkar	M	M	M
Borj	M	M	M	Bqerezla	M	M	M	Bzal	ML	M	M
Chane	L	M	M	Chaqdouf	M	M	M	Charbila	M	M	M
Cheikh Mohammad	M	M	M	Cheikh Taba Es-Sahl	M	M	M	Cheikh Taba	M	M	M
Cheikh Zennad	M	M	M	Cheikhlar	M	M	M	Chir Hmairine	M	M	M
Daghle	M	M	M	Dahr Laissine	M	M	M	Darine	M	M	M
Dawra	L	ML	M	Dawsa w Baghdadi	M	M	M	Dayret Nahr El-Kabir	M	M	M
Deir Dalloum	M	M	M	Deir Jennine	M	M	M	Denbou	ML	M	M
Dibbabiyyeh	M	M	M	Douair Aadwiyeh	M	M	M	Fassikine	M	M	M
Fnaydek	L	ML	M	Fraydes Akkar	M	M	M	Ghazayle	M	M	M
Habchit	L	M	M	Hakour	M	M	M	Halba	M	M	M
Haouchab	M	M	M	Hayssat	M	M	M	Haytla	M	M	M
Hayzouq	M	M	M	Hedd	M	M	M	Hmaira Akkar	M	M	M
Hmaiss Akkar	M	M	M	Hnaider	M	M	M	Hokr Ed-Dahri	M	M	M
Hokr Etti	M	M	M	Hokr Jouret Srar	M	M	M	Houaich	ML	M	M
Hrar	ML	M	M	Idbil	M	M	M	Ilal	M	M	M
Janine	M	M	M	Jdeidet El-JoumeH	M	M	M	Jdeidet El-Kaiteh	M	M	M
Jebayel	M	M	M	Kafr	L	ML	M	Kafr	M	M	M
Karm Asfour	M	M	M	Kfar Melki Akkar	M	M	M	Kfar Noun	M	M	M
Kfarharra	M	M	M	Khalsa	M	M	M	Kharnoubet Akkar	M	MH	M

Khirbet Daoud Aakkar	M	M	M	Khirbet El Remmane	M	M	M	Khirbet Shar	M	M	M
Khoreybet El-Jindi	M	M	M	Khreibet Aakkar	ML	M	M	Kneisset Aakkar	M	M	M
Kneisset Hnaider	M	M	M	Knisse	M	M	M	Kroum El-Aarab	M	M	M
Kwachra	M	M	M	Kweykhat	M	M	M	Machta Hammoud	M	M	M
Majdala	M	M	M	Majdel Akkar	M	M	M	Mar Touma	M	M	M
Marlaya Melhem	M	M	M	Mashha	M	M	M	Massoudiye	M	M	M
Mazraat Beit Ghattas	M	M	M	Mazraat En-Nahriye	M	M	M	Mechmech	L	L	M
Memneh	L	L	ML	Mhammara	M	M	M	Mighraq Aakkar	M	M	M
Minyara	M	M	M	Moqayteh	M	M	M	Mounjez	M	M	M
Msalla	M	M	M	Mzeihmeh	M	MH	M	Nfaiseh	M	M	M
Noura Et-Tahta	M	M	M	Ouadi El-Haour	M	M	M	Ouadi El-Jamous	M	M	M
Ouyoun El-Ghizlane	M	M	M	Qaabarine	M	M	M	Qabaait	L	ML	M
Qachlaq	M	M	M	Qantara Aakkar	M	M	M	Qarha Aakkar	M	M	M
Qarqaf	M	M	M	Qboula	M	M	M	Qleiaat Aakkar	M	M	M
Qloud El-Baqie	M	M	M	Qobaiyat Aakkar	ML	ML	M	Qobbat Chamrat	M	M	M
Qorayat	L	ML	M	Qornet Aakkar	ML	M	M	Qsair Aakkar	M	M	M
Rahbe	ML	M	M	Rihaniyet Aakkar	M	M	M	Rmah	M	M	M
Rmoul	M	M	M	Saadine	M	M	M	Sadaqa	M	M	M
Saidnaya	M	M	M	Sammouniye	M	M	M	Sayssouq	M	M	M
Semmaqiye	M	M	M	Semmaqli	M	M	M	Sfinet El-Dreib	M	M	M
Sfinet El-Qaitaa	ML	M	M	Sindyanet Zeidane	ML	M	M	Souaisset Aakkar	M	M	M
Srar	M	M	M	Tal Abbas El Gharby	M	M	M	Tal Abbas El-Charqy	M	M	M
Tal Biret	M	M	M	Tal Hmayra	M	M	M	Tal Maayan Tal Kiri	M	M	M
Tal Sibel	M	M	M	Tallet Chattaha	M	M	M	Tikrit	M	M	M
Tleil	M	M	M	Tshea	L	L	M	Zawarib	M	M	M
Zouq El Hosniyeh	M	M	M	Zouq El-Haddara	M	M	M	Zouq El-Hbalsa	M	M	M
Zouq El-Moqachrine	M	M	M								

Sud

Sour

Municipality	20-Jan	21-Jan	22-Jan	Municipality	20-Jan	21-Jan	22-Jan	Municipality	20-Jan	21-Jan	22-Jan
Aaiyeh	ML	M	M	Aalma El-Chaab	L	M	M	Aaytit	ML	M	M
Abbassiyeh Sour	ML	M	M	Abou Chech	L	M	M	Ain Abou Abdallah	ML	M	M
Ain Baal	M	M	M	Arzoun	L	M	M	Aziyeh	L	M	M
Baflaya	L	M	M	Barich	ML	M	M	Batouliyah	ML	M	M
Bayad	L	M	M	Bazouriyeh	ML	M	M	Bediass	ML	M	M
Bestiyat	ML	M	M	Borj El Chemali	M	M	M	Borj En-Naqoura	L	M	M
Borj Rahhal	ML	M	M	Boustane	L	M	M	Btaychiyah	L	M	M
Chaaitiye	ML	M	M	Chameh	L	M	M	Chehabiye	L	M	M
Chehour	L	M	M	Chihine	L	M	M	Debaal Sour	ML	M	M
Deir Amess	L	M	M	Deir Kifa	ML	M	M	Deir Qanoun El-Ain	ML	M	M
Deir Qanoun El-Naher	ML	M	M	Derdghaiya	L	M	M	Dhayra	L	M	M
Halloussiyeh	ML	M	M	Hamoul	L	M	M	Hanaouey	ML	M	M
Henniye	ML	M	M	Hmairi Sour	ML	M	M	Iskandarouna Sour	L	M	M
Jbal El Botom	L	M	M	Jebbin	L	M	M	Jennata	ML	M	M
Jijim	L	M	M	Jouaiya	ML	M	M	Kneisset Sour	ML	M	M

Maarake	ML	M	M	Maaroub	ML	M	M	Majadel	L	M	M
Majdalzoun	L	M	M	Mansouri Sour	ML	M	M	Marnba	L	M	M
Marouahine	L	M	M	Mazraat El-Zalloutiy	ML	M	M	Mazraat Mechref	ML	M	M
Mazraat Tayr Semhat	L	ML	M	Mheilib	ML	M	M	Neffakhiyeh	ML	M	M
Niha Sour	L	M	M	Ouadi Jilo	ML	M	M	Qana	L	M	M
Qolaileh Sour	ML	M	M	Rechknayan	L	M	M	Rmadiyah	ML	M	M
Selha Sour	L	M	M	Siddiqine	ML	M	M	Sour	M	M	M
Srifa	L	M	M	Tayr Debbe	ML	M	M	Tayr Felsay	ML	M	M
Tayr Harfa	L	M	M	Touayri	L	M	M	Toura	ML	M	M
Yanouh Sour	ML	M	M	Yarine	L	M	M	Zebqine	L	M	M

Saida

Municipality	20-Jan	21-Jan	22-Jan	Municipality	20-Jan	21-Jan	22-Jan	Municipality	20-Jan	21-Jan	22-Jan
Aanqoun	ML	M	M	Aaqtanit	ML	M	M	Aarab Ej-Jall	ML	M	M
Aarab Tabbaya	ML	M	M	Abra Saida	M	M	M	Adloun	ML	M	M
Adousiyeh	ML	M	M	Ain-El-Deleb	M	M	M	Arzai	ML	M	M
Babliyah	ML	M	M	Barty	L	M	M	Bissariyeh	ML	M	M
Bnaafoul	ML	M	M	Bqosta	M	M	M	Bramiy	M	M	M
Daoudiyeh	ML	M	M	Dareb El-Sim	M	M	M	Erkay	ML	M	M
Ghassanieh	ML	M	M	Ghazieh	M	M	M	Hajjeh	ML	M	M
Haret Saida	M	M	M	Hartiyeh	ML	M	M	Hlaliye Saida	M	M	M
Insariyat	ML	M	M	Jazira Saida	ML	M	M	Kafar Bit	ML	M	M
Kaoutariyet El-Siyad	ML	M	M	Kfar Chellal	L	M	M	Kfar Hatta Saida	ML	M	M
Kfar Milke Saida	ML	M	M	Khartoum	ML	M	M	Khaziz	ML	M	M
Khirbet Ed-Douair Sa	ML	M	M	Khirbet El-Bassal	ML	M	M	Khrayeb Saida	ML	M	M
Loubieh	ML	M	M	Maghdouche	M	M	M	Majdelyoun	M	M	M
Matariyet El-Choumar	ML	M	M	Matayriyeh	M	M	M	Mazraat 'Mseileh	ML	M	M
Mazraat 'Snaiber	ML	M	M	Mazraat Aarab Soukka	ML	M	M	Mazraat Deir Taqla	ML	M	M
Mazraat El Yahoudiye	ML	M	M	Mazraat El-Housseini	M	M	M	Mazraat El-Mhaydaleh	ML	M	M
Mazraat El-Ouasta	ML	M	M	Mazraat Jamjim	ML	M	M	Mazraat Kaoutariyet	ML	M	M
Mazraat Kfar Badda	ML	M	M	Mazraat Oussamiyat	ML	M	M	Mazraat Sari	ML	M	M
Mazraat Sinai	ML	M	M	Meemariyeh	ML	M	M	Merouaniyeh	ML	M	M
Miyeh ou Miyeh	M	M	M	Najjariyeh	ML	M	M	Qaaqaiyat El-Snaouba	ML	M	M
Qnarit	M	M	M	Qraiye Saida	M	M	M	Saida Ed-Dekermane	M	M	M
Saida El-Oustani	M	M	M	Saida El-Qadimeh	M	M	M	Saida Kefraya	ML	M	M
Saksakiyeh	ML	M	M	Salhigh Saida	M	M	M	Sarafand	ML	M	M
Sfenta	L	M	M	Tafahta	ML	M	M	Tanbourit	M	M	M
Tebna	ML	M	M	Zaghdraiya	ML	M	M	Zeita	ML	M	M
Zrariyeh	ML	M	M								

Jezzine

Municipality	20-Jan	21-Jan	22-Jan	Municipality	20-Jan	21-Jan	22-Jan	Municipality	20-Jan	21-Jan	22-Jan
Ain El-Mir (El Estab	M	M	M	Anane	L	ML	M	Aramta	L	M	M
Ariya	VL	ML	M	Aychiyeh	L	ML	M	Azour	L	L	M
Baba	L	L	M	Bayssour Jezzine	M	M	M	Benoueteh Jezzine	L	ML	M
Bhannine	VL	ML	M	Bisri	VL	L	M	Bkassine	L	L	M
Bouslaya	L	L	M	Btedine El-Leqech	L	L	M	Chbail	VL	L	M
Choualiq Jezzine	ML	M	M	Dahr Ed-Deir	L	ML	M	Deir El Qattine	L	L	M

Demachqiyeh	L	M	M	Ghabbatiyeh	L	ML	M	Harf Jezzine	L	L	M
Hassaniyeh	ML	M	M	Haytouleh	ML	M	M	Haytura	L	L	M
Hidab	L	ML	M	Homsiyeh	L	L	M	Jabal Toura	L	ML	M
Jarmaq	L	M	M	Jensnaya	M	M	M	Jernaya	L	M	M
Jezzine	L	M	M	Karkha	ML	M	M	Kfar Falous	ML	M	M
Kfar Houna	L	ML	M	Kfar Jarrah	M	M	M	Lebaa	M	M	M
Louayzet Jezzine	L	ML	M	Machmouche	L	L	M	Mahmoudiyeh Jezzine	L	M	M
Maknounye Jezzine	L	L	M	Maraat Ouazaiyeh	L	M	M	Mazraat Daraya	L	ML	M
Mazraat El-Aarqoub	L	L	M	Mazraat El-Mathane	VL	L	M	Mazraat El-Rahbane	L	L	M
Mazraat Khallet Khaz	L	ML	M	Mazraat Louzid (Loua	VL	L	M	Mazraat Qrouh	L	M	M
Mazraat Tamra	ML	M	M	Mazraat Zighrine Jez	L	ML	M	Mazraat	L	L	M
Mharbiyeh	M	M	M	Midane Jezzine	L	ML	M	Mjeydel Jezzine	ML	M	M
Mlikh	L	ML	M	Mrah El-Hbasse	M	M	M	Ouadi Baanqoudaine	M	M	M
Ouadi El-Laymoun	ML	M	M	Ouardiyeh	VL	VL	M	Qabaa Jezzine	L	L	M
Qatrani	L	ML	M	Qaytouleh	L	L	M	Qtaleh Jezzine	L	L	M
Rihane Jezzine	L	M	M	Rimat	L	ML	M	Roum	L	L	M
Roummanet	L	M	M	Sabbah	L	L	M	Saydoun	L	ML	M
Sfaray	L	L	M	Snaya	L	L	M	Sojoud	L	ML	M
Srayri	L	ML	M	Taaid	L	ML	M	Wadi Jezzine	L	ML	M
Zhalta	L	L	M								

Bekaa

West Bekaa

Municipality	20-Jan	21-Jan	22-Jan	Municipality	20-Jan	21-Jan	22-Jan	Municipality	20-Jan	21-Jan	22-Jan
Aammiq BG	L	ML	M	Ain El Tineh BG	L	ML	M	Ain Zebdeh	L	ML	M
Ana	L	L	M	Aytanit	L	L	M	Baaloul BG	L	ML	M
Bab Mareh	L	ML	M	Chouberqiye Aammiq	L	ML	M	Dakoue	L	ML	M
Deir Ain El-Jaouze	L	ML	M	Deir Tahniche	L	ML	M	Ghaza	L	ML	M
Harime El-Soughra	L	ML	M	Hoch Harimeh	L	ML	M	Jazira BG	ML	ML	M
Jib Jennine	L	ML	M	Kamed-El-Laouz	L	ML	M	Kefraya BG	L	L	M
Khiara El Atika	L	ML	M	Khiara	L	ML	M	Khirbet Qanafar	L	ML	M
Lala	L	ML	M	Lebbaya BG	L	ML	M	Loussa	L	M	M
Machghara	L	ML	M	Manara (Hammara) BG	L	ML	M	Mansoura BG	L	ML	M
Marej BG	ML	ML	M	Maydoun	L	M	M	Ouaqf BG	ML	ML	M
Qaraaoun	L	ML	M	Qelya	L	M	M	Raouda (Istabel)	ML	ML	M
Saghbine	L	ML	M	Sohmor	L	ML	M	Soltan Yacoub el Ara	L	ML	M
Souairy	L	M	M	Sultan Yaacoub	L	ML	M	Tal Znoub	L	ML	M
Yehmor BG	L	ML	M	Zilaya	L	ML	M				

Zahle

Municipality	20-Jan	21-Jan	22-Jan	Municipality	20-Jan	21-Jan	22-Jan	Municipality	20-Jan	21-Jan	22-Jan
Aanjar (Haouch Mouss	L	ML	M	Ablah	ML	M	M	Ain Kfarzabad	L	ML	M
Ali-El-Nahri	ML	M	M	Bar Elias	ML	ML	M	Bouarej	L	ML	M
Cheberqiyet Tabet	ML	ML	M	Chtaura	ML	ML	M	Deir El Ghazal	L	ML	M
Delhamiyet Zahle	L	ML	M	Ferzol	L	ML	M	Haouch El-Ghanam	ML	M	M
Haouch Es-Siyadeh	L	ML	M	Haouch Hala	M	M	M	Haouch Mandara	ML	ML	M

Haouch Qayssar	ML	ML	M	Hezerta	VL	ML	M	Hosh Moussa	ML	M	M
Jdita	L	ML	M	Kfarzabad	L	M	M	Ksara	ML	ML	M
Majdel Aanjar	L	ML	M	Makssi	ML	ML	M	Massa	ML	M	M
Mazraat Er-Remtaniye	L	ML	M	Mrayjat Zahle	L	ML	M	Mzaraa Zahle	L	ML	M
Nabi Ayla	ML	M	M	Nasriyet Rizk	ML	M	M	Nasriyet Zahle	ML	ML	M
Niha Zahle	L	ML	M	Ouadi Ed-Deloum	L	ML	M	Ouadi El-Arayech	L	ML	M
Qaa El Rim	L	L	M	Qab Elias	L	ML	M	Qousaya	L	ML	M
Rhit	ML	M	M	Riyak	ML	M	M	Saadnayel	ML	ML	M
Taal El-Akhdar	ML	ML	M	Taalbeya	L	ML	M	Taanayel	L	ML	M
Talamara	M	M	M	Tcheflik Edde Haouch	L	ML	M	Tcheflik Qiqano	ML	ML	M
Terbol Zahle	ML	ML	M	Touaite Zahle	L	ML	M	Zahle Aradi	L	ML	M
Zahle El-Berbara	ML	ML	M	Zahle El-Maallaqa	ML	ML	M	Zahle El-Midane	ML	ML	M
Zahle Er-Rassiye	ML	ML	M	Zahle Haouch El-Ouma	L	ML	M	Zahle Haouch El-Ouma	L	ML	M
Zahle Haouch Ez-Zara	ML	ML	M	Zahle Maalaqa Aradi	L	ML	M	Zahle Mar Antonios	ML	ML	M
Zahle Mar Elias	L	ML	M	Zahle Mar Gerios	L	ML	M	Zahle Saydet En-Naja	L	ML	M
Zebdoul	L	ML	M								

Rachaiya

Municipality	20-Jan	21-Jan	22-Jan	Municipality	20-Jan	21-Jan	22-Jan	Municipality	20-Jan	21-Jan	22-Jan
Ain Arab Rachaiya	L	M	M	Ain Ata	VL	ML	ML	Ain Harche	L	M	M
Aqabe Rachaya	L	M	M	Ayha	L	ML	M	Ayta El Fokhar	L	M	M
Bakifa Rachaya	L	M	M	Bakka	L	M	M	Beit Lahya	L	M	M
Bireh Rachaiya	L	ML	M	Daher El Ahmar	L	M	M	Deir El-Achayer	L	ML	M
Heloua Rachaiya	L	ML	M	Hoch El Qannabeh Rac	L	ML	M	Kaoukaba Bou Arab	L	ML	M
Kfar Danis	L	M	M	Kfar Mechki	L	M	M	Kfar Qouq	L	ML	M
Kherbet Rouha	L	M	M	Majdel Balhiss	L	ML	M	Mdoukha	L	M	M
Mhaydseh Rachaiya	L	ML	M	Nabi Safa	L	M	M	Rachaiya	L	ML	M
Rafid Rachaiya	L	M	M	Selsata (Mazraat Dei	VL	L	ML	Tannoura	L	M	M
Yanta	L	M	M								

Beyrouth

Beyrouth

Municipality	20-Jan	21-Jan	22-Jan	Municipality	20-Jan	21-Jan	22-Jan	Municipality	20-Jan	21-Jan	22-Jan
Achrafieh	ML	M	M	Ain el-Mreisse	ML	M	M	Bachoura	ML	M	M
Beirut Central Distr	ML	M	M	Marfai	ML	M	M	Mazraa	ML	M	M
Medaouar	ML	M	M	Minet el-Hosn	ML	M	M	Mwssaitbeh	ML	M	M
Ras Beirut	ML	M	M	Rmeil	ML	M	M	Saifi	ML	M	M
Zqaq el-Blat	ML	M	M								



نشرة الطقس الصادرة عن مصلحة الأرصاد الجوية بالمديرية العامة للطيران المدني

النشرة: المسائية

الثلاثاء: 19 كانون الثاني 2016

الحالة العامة: يبدأ المنخفض الجوي (URSULA) بالانحسار التدريجي عن الحوض الشرقي للمتوسط بعد ظهر يوم غد الأربعاء.

الأربعاء: غائم جزئياً مع ارتفاع طفيف بدرجات الحرارة وأمطار متفرقة وتلوج اعتباراً من ارتفاع 1000 متر خاصة فترة قبل الظهر، كما يتكوّن الجليد ليلاً وصباح اليوم التالي على الطرقات الجبلية والداخلية، يبدأ الطقس بالتحسن التدريجي مساءً.

الخميس: غائم جزئياً بسحب مرتفعة مع ارتفاع محدود بدرجات الحرارة، (تحذير من تكون الجليد خلال ساعات الصباح الأولى وخلال الليل).

الجمعة: غائم جزئياً الى غائم أحياناً بسحب متوسطة ومرتفعة وارتفاع اضافي بدرجات الحرارة.

الخميس		الأربعاء		الثلاثاء		درجات الحرارة المتوقعة	
18/10	19/9	17/9	18/8	16/10	17/8	صور	على الساحل
19/10		18/9		17/9		بيروت	
16/9		15/8		14/8		طرابلس	
8/2	8/1	7/2	7/1	6/3	6/1	بيصور	فوق الجبال
7/1		6/1		5/1		قرطبا	
-/-		-/-		-/-		فقرا	
2/3-		1/4-		1-/3-		الأرز	
10/3	11/2	9/2	10/2	8/3	9/2	القرعون	في الداخل
11/3		10/3		9/4		مرجعيون	
10/2		9/2		8/2		زحلة	

الرياح السطحية: جنوبية غربية إلى جنوبية، سرعتها بين 30 و 50 كلم/س.

الإنقشاع: متوسط.

الرطوبة النسبية على الساحل: بين 60 و 80 %.

حال البحر: مائج.

حرارة سطح الماء: 18°م.

أي ما يعادل: 762 ملم زئبق

الضغط الجوي: 1015 hPa.

ساعة غروب الشمس: 16:57

ساعة شروق الشمس: 06:42

كمية الأمطار المسجلة حتى الساعة السادسة صباحاً (ت.ع)				
المحطات	خلال 24 ساعة	المجموع حتى اليوم	المعدل العام	السنة الماضية
بيروت - المطار	28.8 ملم	310.2 ملم	434 ملم	544.4 ملم
طرابلس	29.4 ملم	588.6 ملم	448 ملم	599.9 ملم
زحلة	20.0 ملم	231.8 ملم	295 ملم	433.5 ملم