

# Lebanon Fire Risk Bulletin



CIVIL DEDEFENCE

*Refer to cadast condition.*

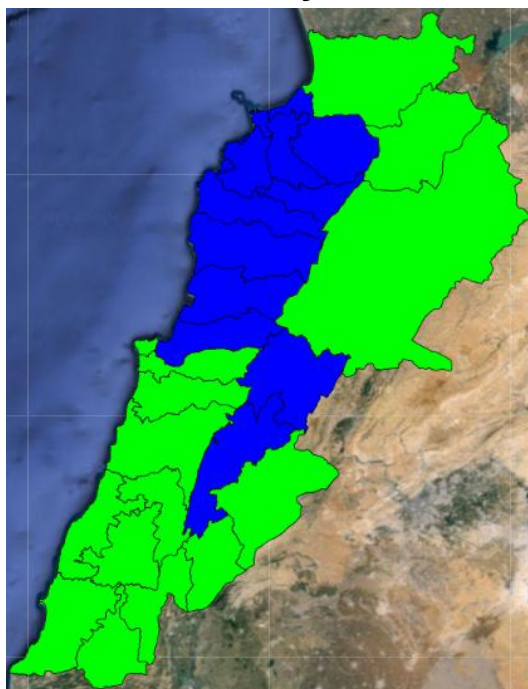
*General description of potential fire risk situation*

Symbol	Level of risk	Meaning and actions
VL	<b>Very low</b>	Very low fire risk. Controlled burning operations can be hardly executed due to high fuel moisture content. Normally wildfires self-extinguish.
L	<b>Low</b>	Low fire risk. Controlled burning operations can be executed with a reasonable degree of safety.
ML	<b>Medium low</b>	Medium-low fire risk. Controlled burning operations can be executed in safety conditions. All the fires need to be extinguished.
M	<b>Medium</b>	Medium fire risk. Controlled burning operations would be avoided. All the fires need to be very well extinguished.
M	<b>Medium high</b>	Controlled burning is not recommended. Open flame will start fires. Cured grasslands and forest litter will burn readily. Spread is moderate in forests and fast in exposed areas. Patrolling and monitoring is suggested. Fight fires with direct attack and all available resources.
H	<b>High</b>	Ignition can occur easily with fast spread in grass, shrubs and forests. Fires will be very hot with crowning and short to medium spotting. Direct attack on the head may not be possible requiring indirect methods on flanks. Patrolling and monitoring the territory is highly suggested.
E	<b>Extreme</b>	Ignition can occur also from sparks. Fires will be extremely hot with fast rate of spread. Control may not be possible during day due to long range spotting and crowning. Suppression forces should limit efforts to limiting lateral spread. Damage potential total. Patrolling and monitoring the territory is highly suggested.

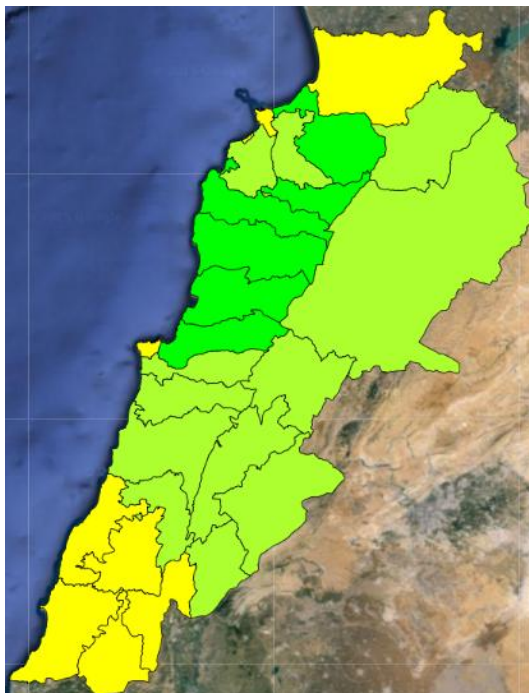
**Beirut, 21 January 2016**

# FIRE RISK INDEX

20 January 2016



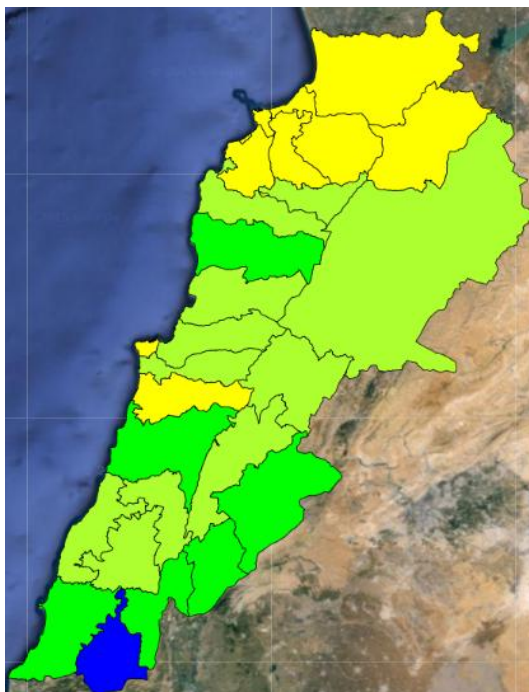
21 January 2016



22 January 2016



23 January 2016



Layer Legend:

Lebanon Wildfire Risk Index 1

Data: Run: 21/01/2016 00:00. Forecast for 21

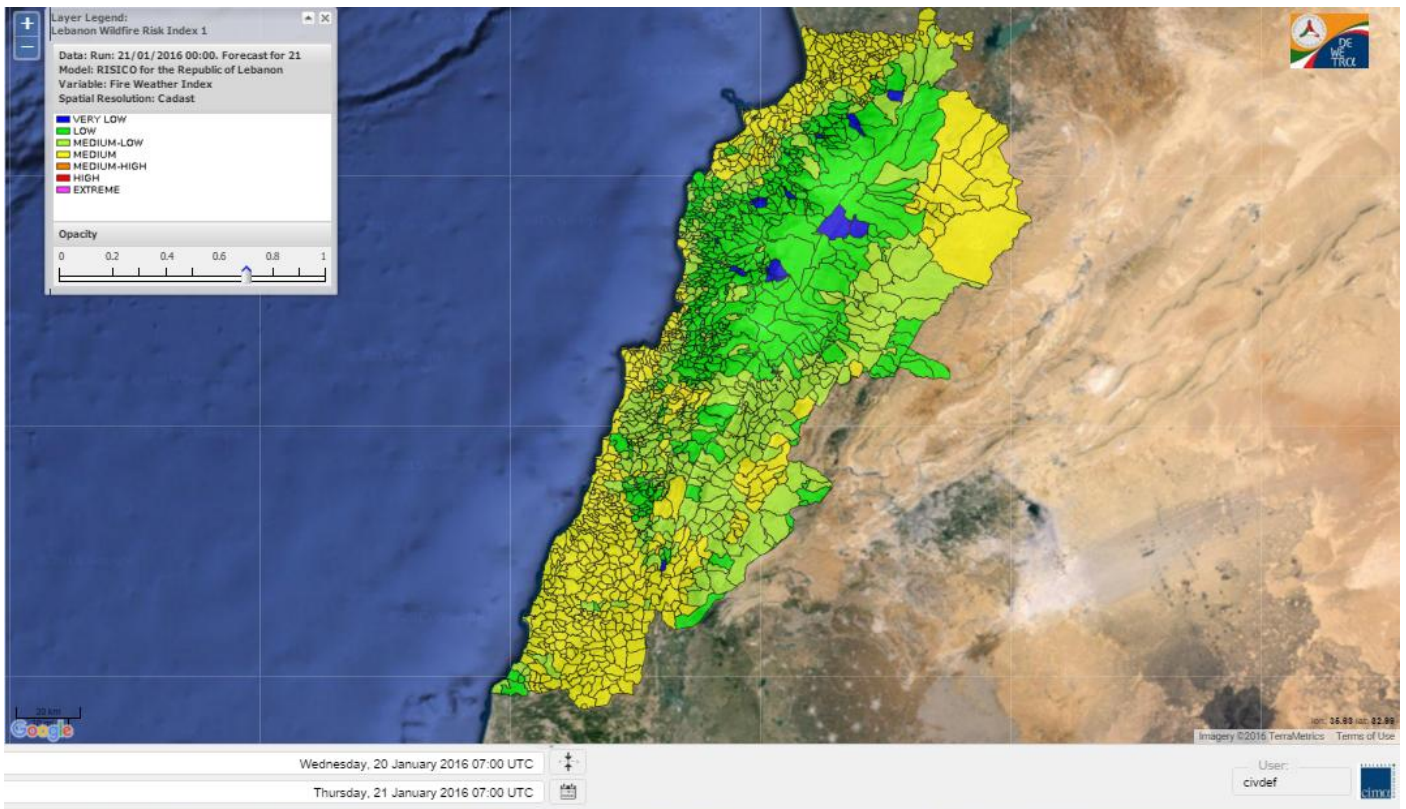
Model: RISICO for the Republic of Lebanon

Variable: Fire Weather Index

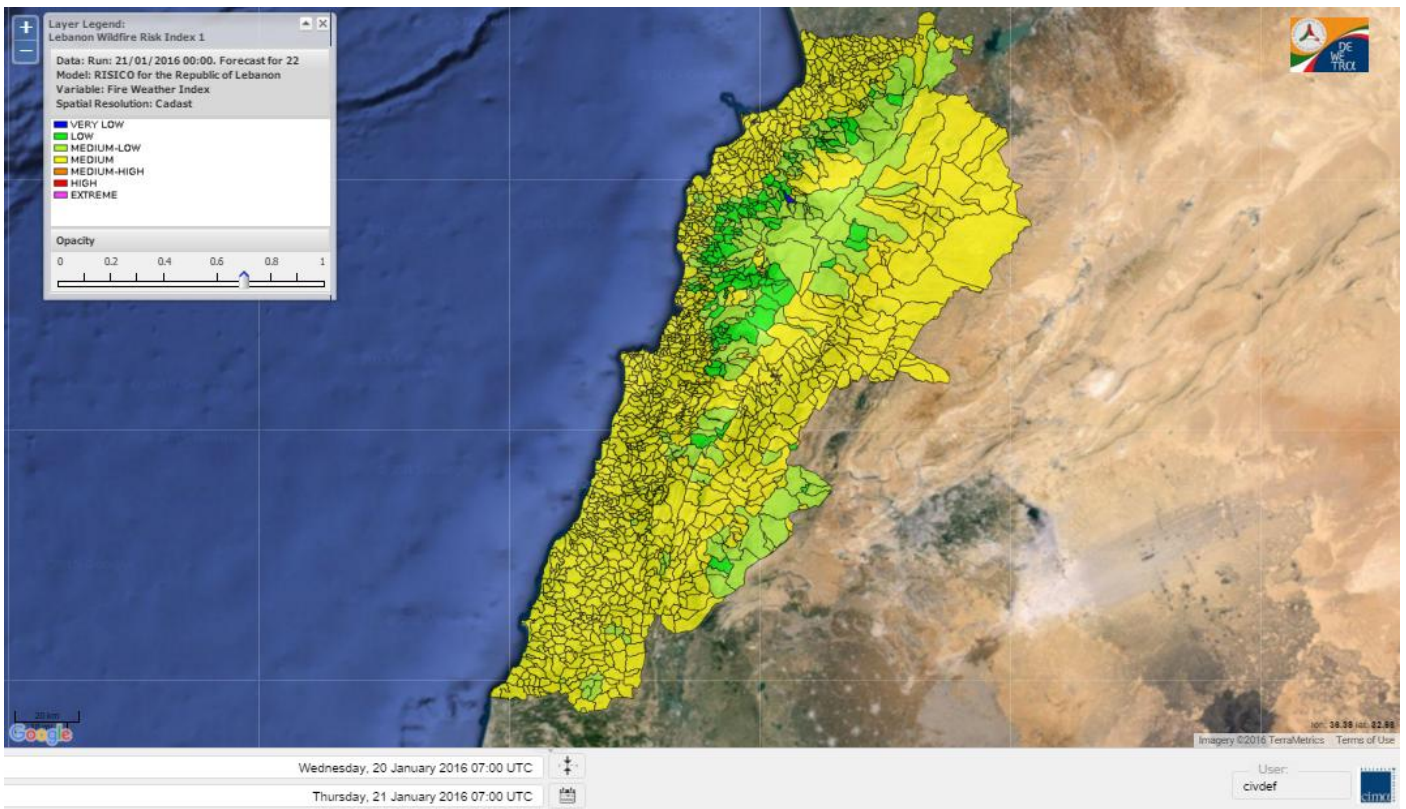
Spatial Resolution: Caza

- VERY LOW
- LOW
- MEDIUM-LOW
- MEDIUM
- MEDIUM-HIGH
- HIGH
- EXTREME

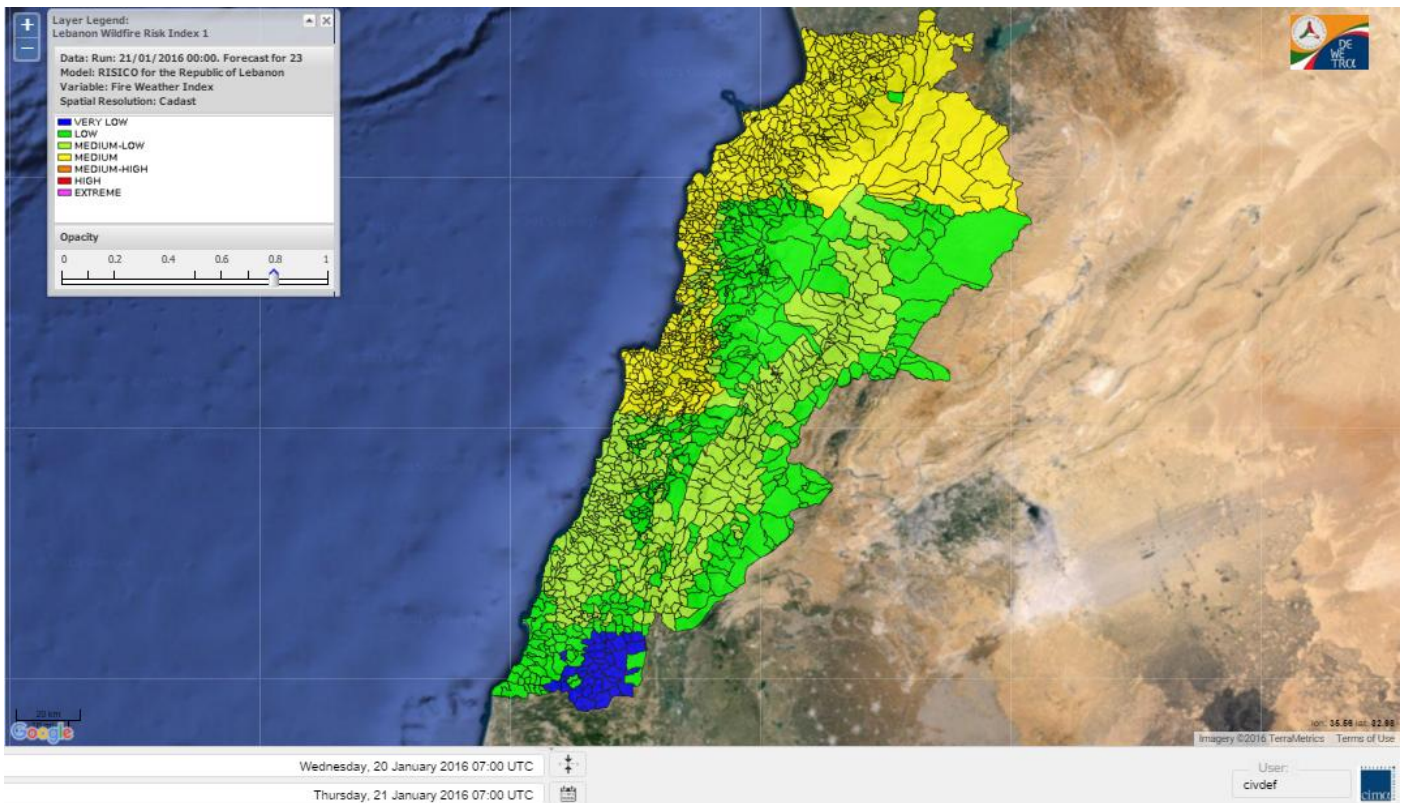
# Lebanon for 21 January 2016



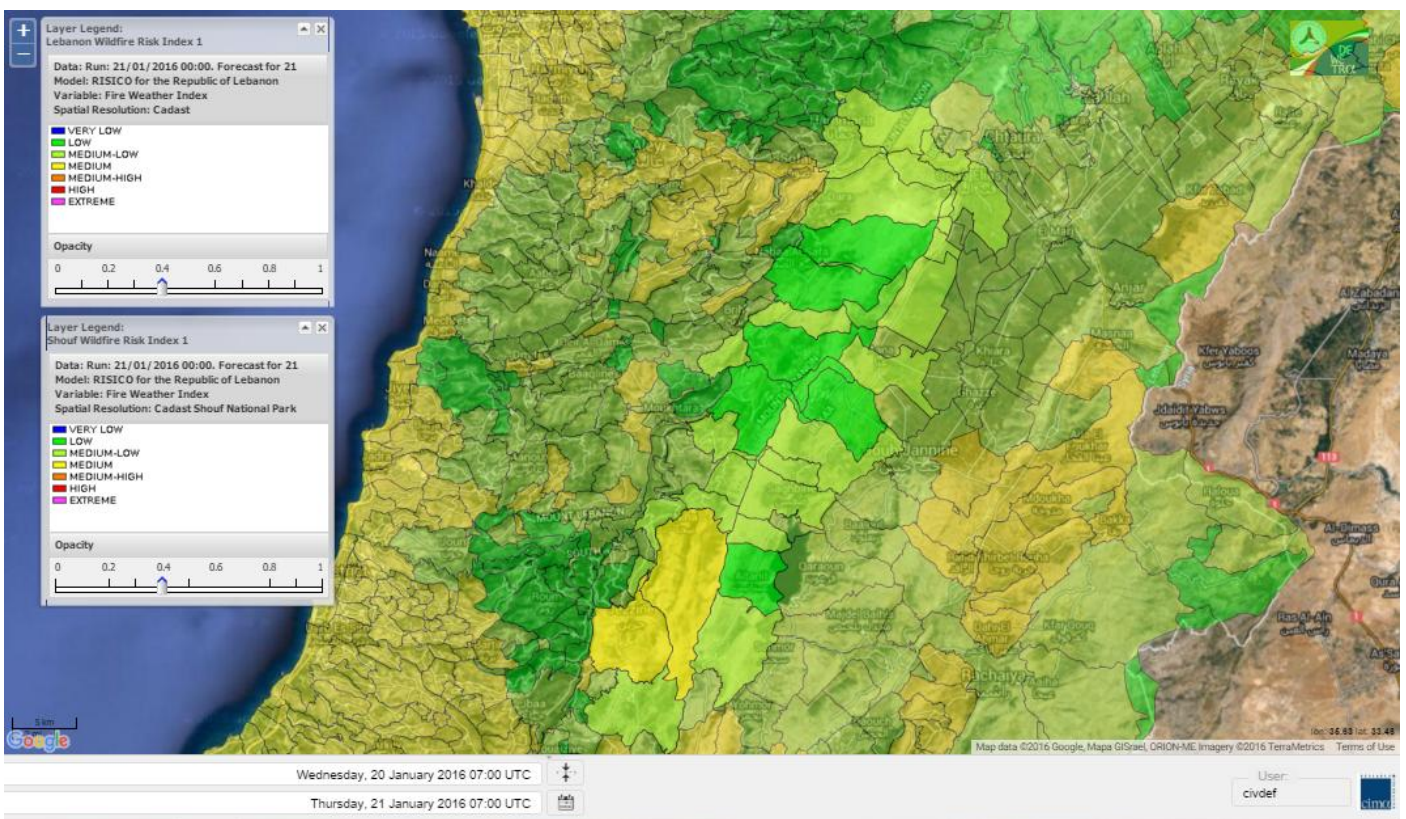
# Lebanon for 22 January 2016



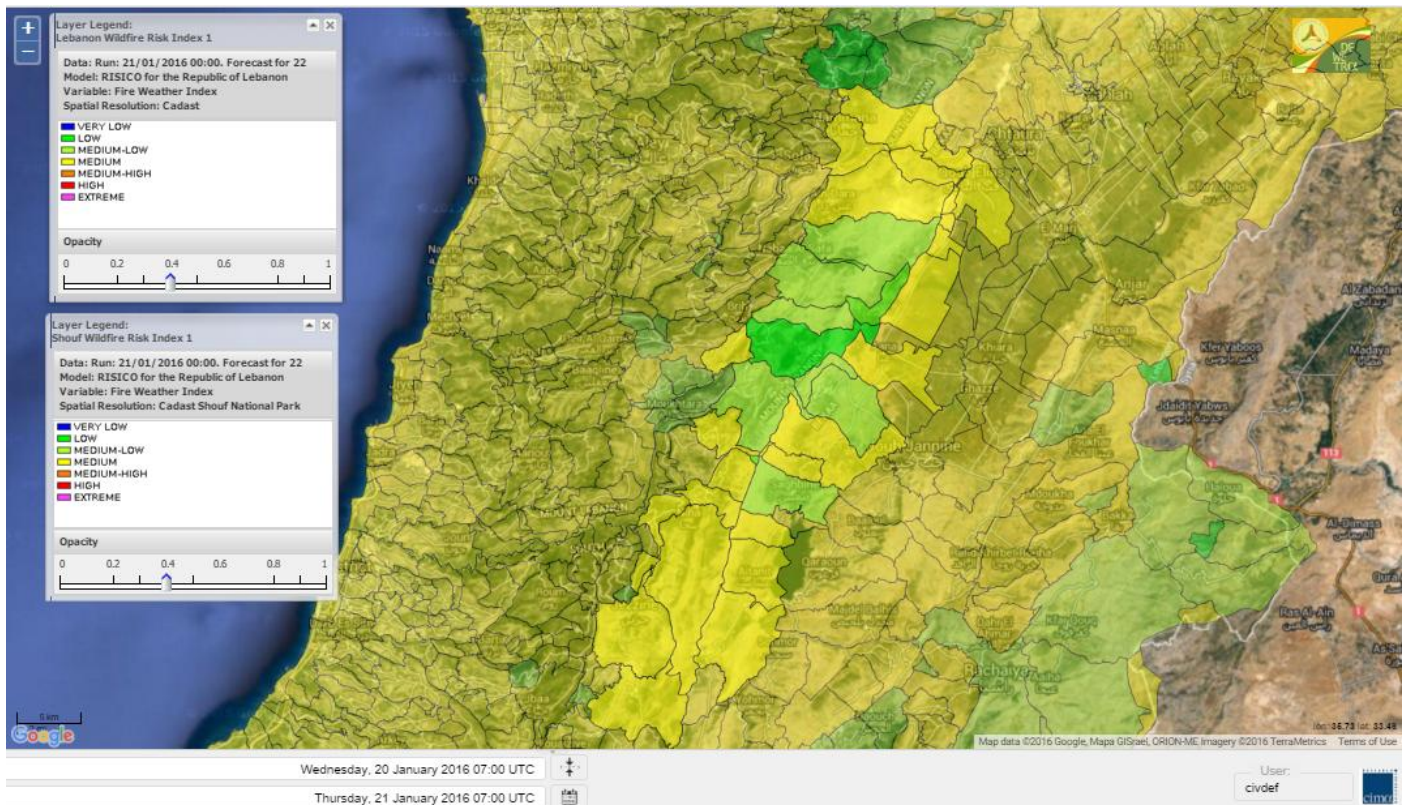
# Lebanon for 23 January 2016



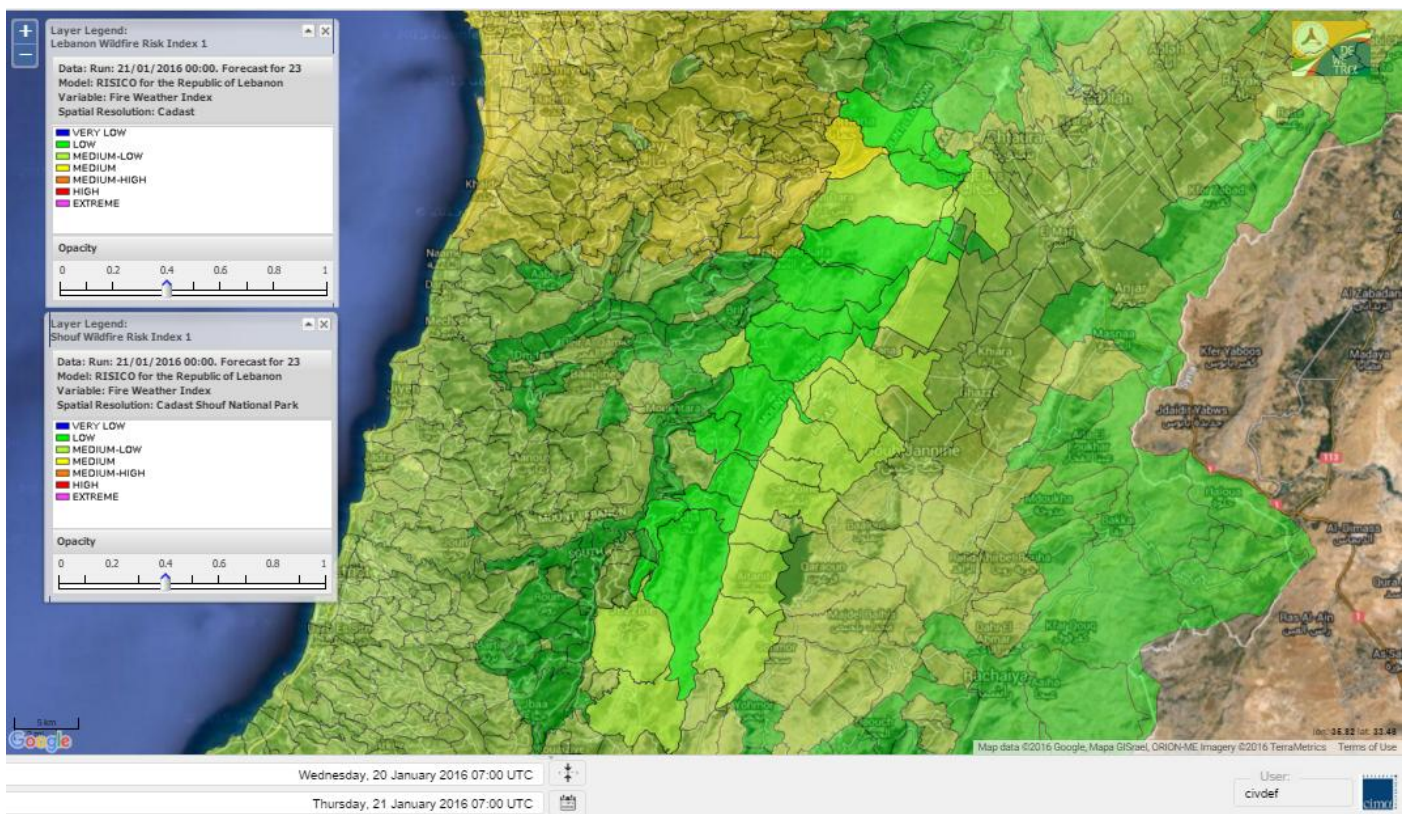
# Shouf Biosphere Reserve Forecast for 21 January 2016



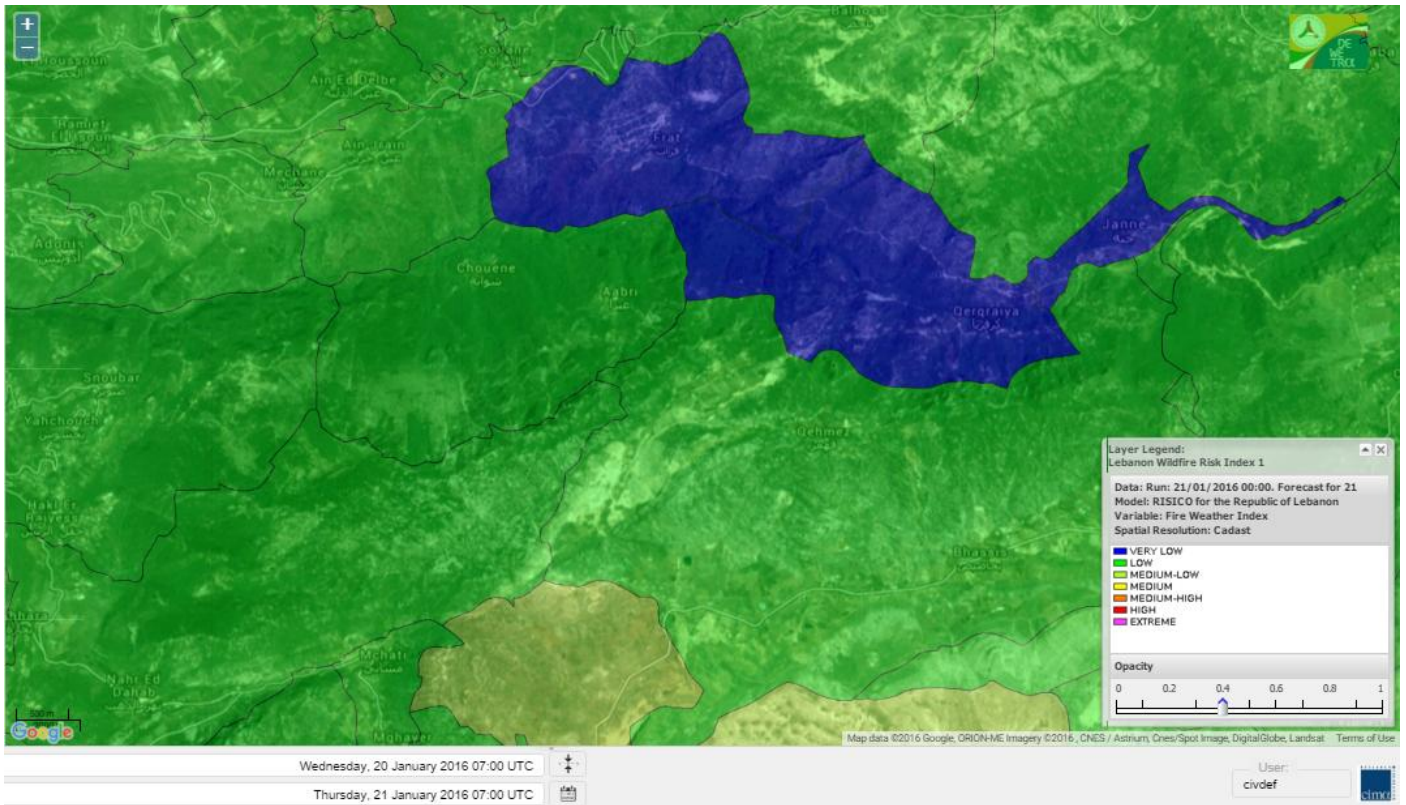
# Shouf Biosphere Reserve Forecast for 22 January 2016



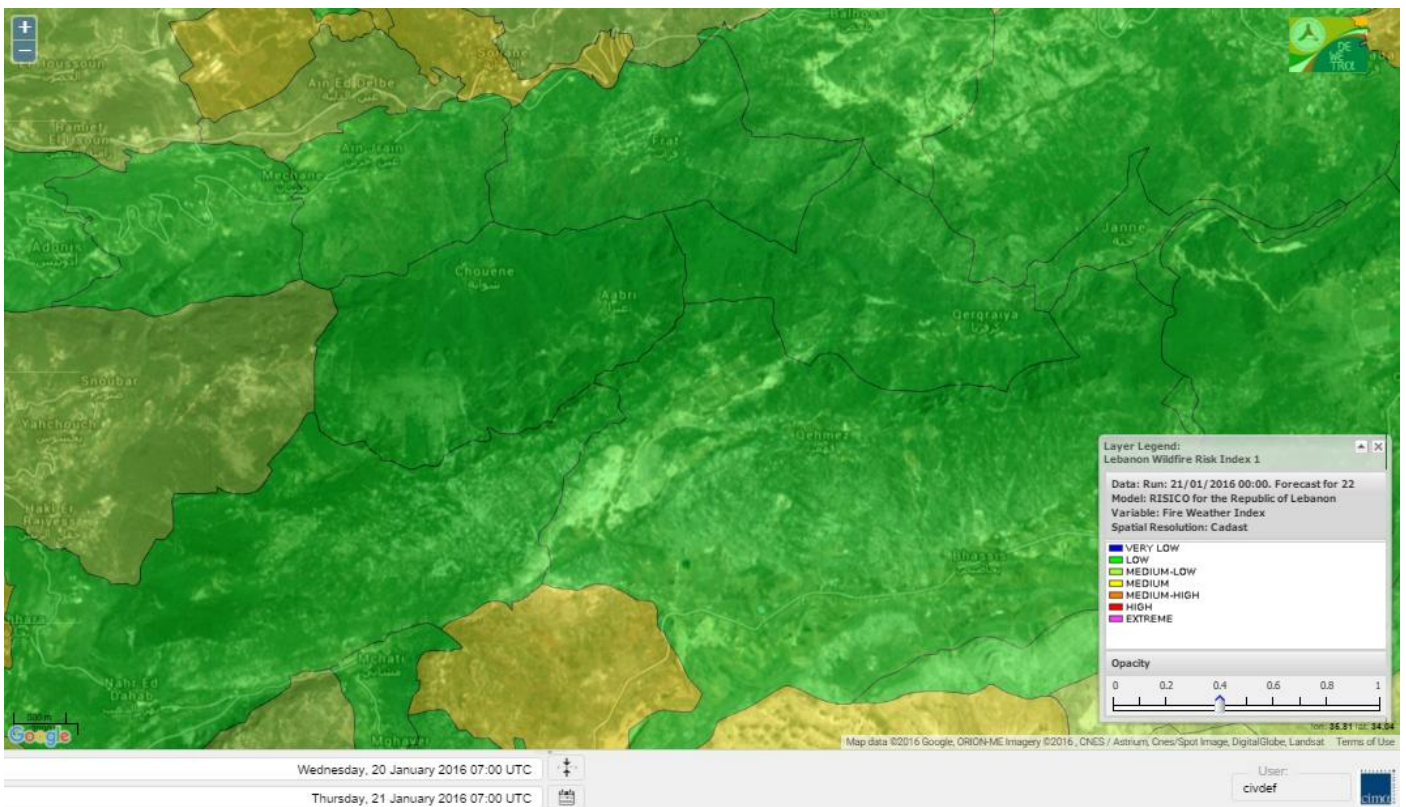
# Shouf Biosphere Reserve Forecast for 23 January 2016



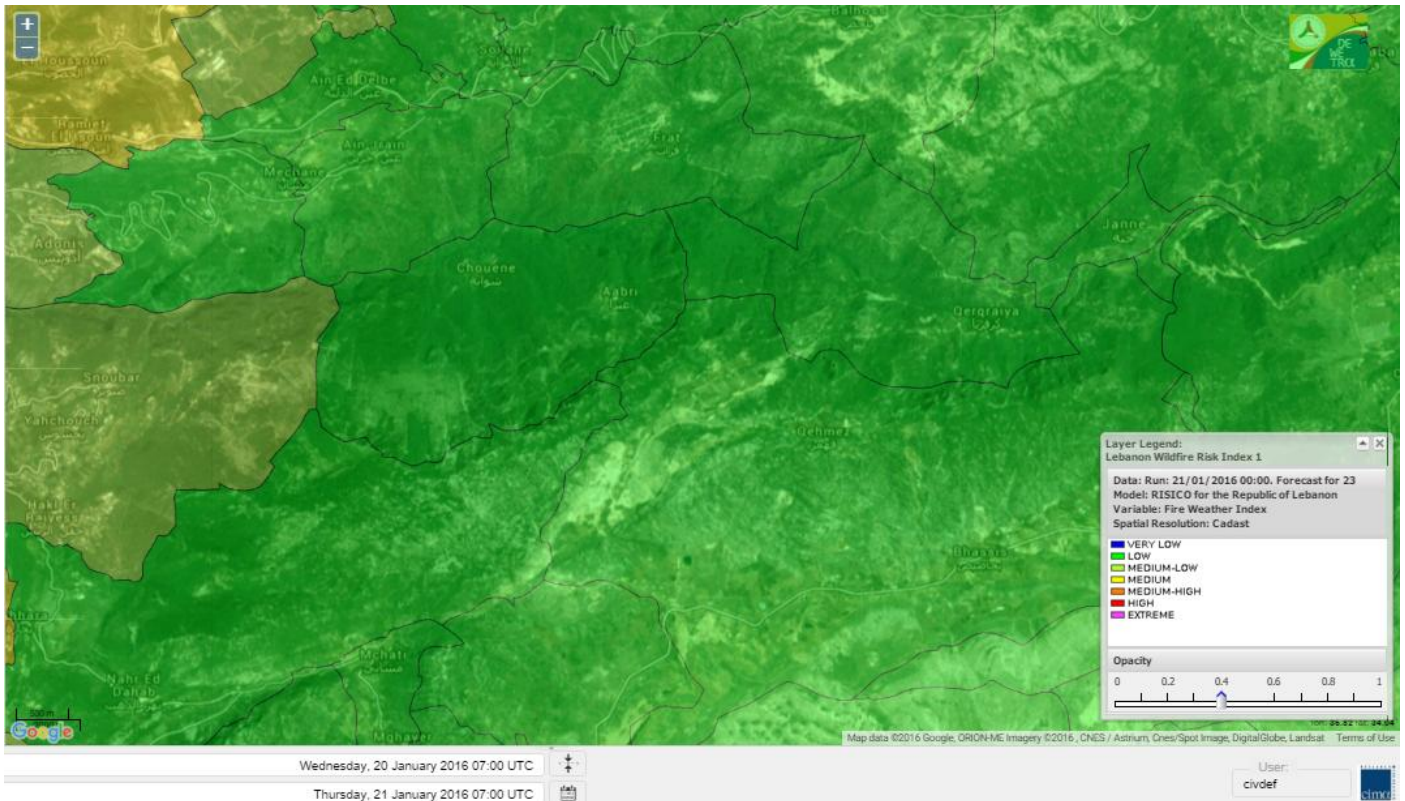
# Jabal Moussa Reserve Forecast for 21 January 2016



# Jabal Moussa Reserve Forecast for 22 January 2016



# Jabal Moussa Reserve Forecast for 23 January 2016



## Nord

### Koura

Municipality	21-Jan	22-Jan	23-Jan	Municipality	21-Jan	22-Jan	23-Jan	Municipality	21-Jan	22-Jan	23-Jan
Aaba	M	M	M	Afsaddiq	M	M	M	Ain Ekrine	ML	M	M
Amioun	ML	M	M	Anfeh	M	M	M	Badbhoun	M	M	M
Barghoun	M	M	M	Barsa	ML	M	M	Batroumine	ML	M	M
Bdebba	ML	M	M	Bechmizine	M	M	M	Bednayel El-Koura	L	M	M
Bhabbouch El-Koura	ML	M	M	Bkeftine	M	M	M	Bnehran	L	ML	M
Bqaiia El-Koura	M	M	M	Bsarma	M	M	M	Btaaboura	ML	M	M
Bterram	M	M	M	Btouratij	M	M	M	Bziza	ML	M	M
Dar Beehtar	ML	M	M	Dar Chmezzine	ML	M	M	Deddeh	M	M	M
Deir El-Balamand	L	M	M	Fih	M	M	M	Hraiche	M	M	M
Ijdaabrine	L	M	M	Kaftoun	ML	M	M	Kefraya El-Koura	ML	M	M
Kfarakka	ML	M	M	Kfarhata	L	M	M	Kfarhazir	M	M	M
Kfarkahel	M	M	M	Kfarsaroun	ML	M	M	Kosba	ML	M	M
Mejdel el-Koura	L	ML	M	Nakhle	ML	M	M	Qalhat	L	M	M
Ras Masqa	M	M	M	Rechdibbine	M	M	M	Zakroun	ML	M	M
Zgharta El-Mtaouile	L	L	M								

### Bcharre

Municipality	21-Jan	22-Jan	23-Jan	Municipality	21-Jan	22-Jan	23-Jan	Municipality	21-Jan	22-Jan	23-Jan
Aabdine	L	ML	M	Bane	L	M	M	Barhelioun	L	L	M
Bazouone	L	ML	L	Becharre	L	ML	M	Beit Menzer	L	ML	M
Billa	L	ML	M	Blaouza	L	M	M	Bqaa Kafra	L	ML	L
Bqerqacha	L	ML	L	Breissat	L	ML	L	Dimane	L	ML	L
Hadath El Jobbeh	L	ML	L	Hadchit	L	ML	M	Hasroun	L	ML	L
Mazraat Aassaf	VL	L	L	Mazraat Bani Saab	L	ML	L	Mchaa El-Jobbeh	L	ML	L
Metrit	L	ML	M	Moghr El-Ahoual	L	ML	M	Ouadi Qannoubine	VL	VL	L
Qanat	L	L	L	Qnayouer	L	L	ML	Tourza	L	ML	M

### Batroun

Municipality	21-Jan	22-Jan	23-Jan	Municipality	21-Jan	22-Jan	23-Jan	Municipality	21-Jan	22-Jan	23-Jan
Aabrine	L	ML	M	Aalali	L	ML	L	Aartiz	L	L	ML
Abdelli	L	ML	M	Ajdabra	L	ML	M	Assia	L	L	L
Basbina	ML	M	M	Batroun	ML	M	M	Bcheleh	L	ML	L
Bechtoudar	L	L	L	Beit Chlala	L	L	L	Beit Kassab	VL	L	L
Bijdarfil	ML	M	M	Bqesmaya	L	ML	M	Chatine	L	ML	L
Chebte	L	L	ML	Chekka	M	M	M	Daael	L	L	L
Dahr Abi Yaghi	L	ML	M	Daraya El-Batroun	ML	M	M	Deir Billa	L	L	ML
Deir Kfifane	ML	M	M	Deir Mar Youhanna EL	L	L	L	Deir Mar Youssef Jra	L	ML	M
Douma	L	ML	L	Douq	L	L	ML	Eddeh El-Batroun	L	M	M
Ftatah El-Batroun	L	L	L	Ghouma	L	M	M	Hadtoun	L	ML	L
Hamat	L	M	M	Harbouna	L	L	M	Hardine	VL	L	L
Helta	L	L	L	Hery	M	M	M	Jebba	L	L	L
Jrabta El-Batroun	L	M	M	Jrane El-Batroun	ML	M	M	Kfar Aabida	L	M	M
Kfar Halda	L	L	L	Kfarb Shlaimane	L	L	L	Kfarhatna	L	L	M
Kfarhay	ML	M	M	Kfarhelos	L	ML	M	Kfifane	ML	M	M



Kfour El Arabi	L	ML	L	Koubba	ML	M	M	Kour	L	ML	M
Mar Mama	L	L	L	Masrah	L	L	ML	Mehmarch	L	ML	L
Mrah Chdid	L	M	M	Mrah El Ziyat	L	M	M	Mrah El-Hajj	L	L	L
Nahle El-Batroun	L	ML	L	Niha El-Batroun	L	ML	L	Oujah El-Hajjar	L	M	M
Ouata Houb	L	L	L	Qatnaaoun	L	M	M	Racha	L	ML	L
Rachana	L	M	M	Rachkida	L	M	M	Ram El-Batroun	L	L	L
Ras Nahnach	L	M	M	Selaata	ML	M	M	Sghar	L	M	M
Smar Jbayl	L	M	M	Sourat El-Batroun	L	L	L	Tannourine El-Faouqa	L	ML	L
Tannourine Et-Tahta	L	L	L	Thoum	L	M	M	Toula El-Batroun	L	ML	M
Zan	L	ML	L								

## Zgharta

Municipality	21-Jan	22-Jan	23-Jan	Municipality	21-Jan	22-Jan	23-Jan	Municipality	21-Jan	22-Jan	23-Jan
Aachach	M	M	M	Aalma	M	M	M	Aarde	ML	M	M
Aintourine	L	M	M	Arabet Qozhaya	L	L	ML	Arde	M	M	M
Arjis	M	M	M	Asnoun	ML	M	M	Ayto	L	ML	M
Basloukit	L	M	M	Bchannine	M	M	M	Besebeel	M	M	M
Bhairret Toula	L	ML	M	Bnachee	ML	M	M	Boussit	M	M	M
Danha	ML	M	M	Daraiya Zgharta	M	M	M	Deir Jdeide	M	M	M
Ehden	L	M	M	Halan	M	M	M	Hariq Zgharta	ML	M	M
Houakir	L	ML	M	Hraiqis	M	M	M	laal	ML	M	M
Ijbaa	L	M	M	Karm Saddeh	L	L	M	Kfarchakhna	M	M	M
Kfardlaqous	ML	M	M	Kfarfou	ML	M	M	Kfarhata Zgharta	M	M	M
Kfarhoura	ML	M	M	Kfarsghab	L	M	M	Kfaryachit	ML	M	M
Kfarzaina	M	M	M	Khaldiye	ML	M	M	Mazraat Ajbeaa	ML	M	M
Mazraat Et-Teffah	L	ML	M	Mazraat Jneid	ML	M	M	Mejdlaia Zgharta	M	M	M
Merh Kfarsghab	ML	M	M	Miryata	M	M	M	Miziara	L	ML	M
Mzraat Kefraya	M	M	M	Qorah Bach	ML	M	M	Rachiine	ML	M	M
Ras Kifa	ML	M	M	Sakhra	L	M	M	Sebhel Zgharta	ML	M	M
Serhel	L	L	ML	Tallet Zgharta	ML	M	M	Toula Zgharta	L	ML	M
Zgharta	M	M	M								

## Minieh-Denniye

Municipality	21-Jan	22-Jan	23-Jan	Municipality	21-Jan	22-Jan	23-Jan	Municipality	21-Jan	22-Jan	23-Jan
Aasaymout	L	L	M	Aaymar	L	ML	M	Aazki	ML	M	M
Ain El-Tineh-Miniyeh	L	L	M	Assoun	L	ML	M	Bakhaaoun	L	ML	M
Bchennata	ML	M	M	Bechehhara	L	L	M	Beddawi	M	M	M
Behouaita	L	ML	M	Beit El Foqss	L	L	M	Beit Haouik	ML	ML	M
Beit Zoud	L	ML	M	Bekaasafrine	L	M	M	Borj El Yahoudiyeh	M	M	M
Bqarsouna	L	L	M	Btermaz	L	ML	M	Debaael	L	L	M
Deir Ammar	M	M	M	Deir Nbouh	L	ML	M	Haouaret-Miniyeh	L	ML	M
Haql el Azimeh	L	L	M	Harf El Siyad	L	L	M	Hazmiye-Miniyeh	L	L	M
Izal	ML	ML	M	Jarjour	VL	L	M	Jayroun	L	L	M
Kahf El-Malloul	L	L	M	Karm El-Moher	L	ML	M	Kfar Binine	L	ML	M
Kfarchalane	ML	ML	M	Kfarhabou	ML	M	M	Kharroub-Miniyeh	ML	M	M
Mazraat El-Kreme	L	L	M	Mazraat Ketrane	L	L	M	Merkebta	M	M	M
Minyeh	M	M	M	Mrah El Sfirat	L	L	M	Mrah Sraj	L	ML	M
Mrebbine	L	ML	M	Nabi Youcheaa	M	M	M	Nemrine	L	ML	M

Qarhaiya	L	ML	M	Qarne	VL	L	M	Qarsita	L	L	M
Qattineh-Miniyeh	VL	L	M	Qemmamine	VL	ML	M	Qraine	L	L	M
Raouda-Aadoua	M	M	M	Rihaniyet-Miniyeh	M	M	M	Sfireh	L	ML	M
Sir Ed-Danniyeh	L	L	M	Tarane	L	ML	M	Terbol-Miniyeh	M	M	M
Zaghartagrine	L	ML	M	Zouq Bhannine	M	M	M				

## Nabatiye

### Nabatiye

Municipality	21-Jan	22-Jan	23-Jan	Municipality	21-Jan	22-Jan	23-Jan	Municipality	21-Jan	22-Jan	23-Jan
Aabba	M	M	ML	Aazzi	M	M	ML	Adchit El-Chqif	M	M	ML
Ain Bou Swar	M	M	L	Ain Kana	M	M	ML	Ali El-TaHER	M	M	ML
Ansar	M	M	ML	Arab Salim	M	M	ML	Arnoun	M	M	ML
Bfaroue	M	M	ML	Breyqaah	M	M	ML	Charqiyeh	M	M	ML
Choukine	M	M	L	Deir El Zahrani	M	M	ML	Doueir El-Nabatiyeh	M	M	ML
Habbouch El-Nabatiye	M	M	ML	Hamra El-Nabatiyeh	M	M	ML	Harouf El-Nabatiyeh	M	M	ML
Hmaile	M	M	ML	Houmin El Faouqa	M	M	ML	Houmin El Tahta	M	M	ML
Jarjough	ML	M	L	Jbaah El-Nabatiyeh	ML	M	L	Jebchit	M	M	ML
Kfar Djal El-Nabatiy	M	M	ML	Kfar Remmane	M	M	ML	Kfar Sir	M	M	L
Kfar Tebnit	M	M	ML	Kfarfila	M	M	ML	Kfour El-Nabatieh	M	M	ML
Mayfadoun	M	M	ML	Mazraat Bsaffour	M	M	ML	Mazraat Chalbaal	M	M	ML
Mazraat Dmoul	M	M	ML	Mazraat El Khreibeh	M	M	ML	Mazraat El-Bayad El-	M	M	ML
Mazraat Kfarjaouz	M	M	L	Mazraat Qalaat Meiss	M	M	ML	Nabatiyeh El-Fawka	M	M	ML
Nabatiyeh Et-Tahta	M	M	ML	Namiriyeh	M	M	ML	Qaaqaaiyet El Jisr	M	M	L
Qossaibeh El-Nabatiy	M	M	ML	Roumine	M	M	ML	Sarba El-Nabatieh	M	M	ML
Sir El-Gharbiyeh	M	M	ML	Toul	M	M	L	Yehmor El-Nabatiyeh	M	M	L
Zaoutar El Charqiyeh	M	M	L	Zaoutar El-Gharbiyeh	M	M	L	Zebdine El-Nabatiyeh	M	M	L
Zefta	M	M	ML								

### Hasbaiya

Municipality	21-Jan	22-Jan	23-Jan	Municipality	21-Jan	22-Jan	23-Jan	Municipality	21-Jan	22-Jan	23-Jan
Aain Jarfa	ML	M	ML	Abou Qamha	M	M	ML	Ain Qania	ML	M	L
Bourghos	M	M	ML	Chebaa	ML	ML	L	Chouaya Hasbaya	ML	ML	L
Dellafeh	M	M	ML	Fardiss Hasbaiya	M	M	ML	Hasbaya	M	M	ML
Hbariyeh	ML	M	L	Kaoukaba Hasbaiya	M	M	ML	Kfar Chouba	ML	M	L
Kfar Hamam	ML	M	L	Kfeir El-Zait	ML	ML	L	Khalwat Hasbaya	L	L	L
Khreibet Hasbaiya	M	M	ML	Majidiyeh Hasbaiya	M	M	ML	Marj Ez-Zhour (Haouc	ML	ML	L
Meri	M	M	ML	Mimass	M	M	ML	Rachaiya El-Fokhar	M	M	ML
Salaiyeb	M	M	ML								

### Marjayoun

Municipality	21-Jan	22-Jan	23-Jan	Municipality	21-Jan	22-Jan	23-Jan	Municipality	21-Jan	22-Jan	23-Jan
Aalmane Marjaayoun	ML	M	L	Aamra	M	M	ML	Adayseh Marjaayoun	M	M	L
Adchit El-Koussair	M	M	L	Ain Aarab Marjaayoun	M	M	ML	Bani Haiyann	M	M	L
Blatt Marjaayoun	M	M	ML	Blida	M	M	L	Borj El-Moulouk	M	M	ML
Boueyda Marjaayoun	M	M	L	Deir Mimass	ML	M	L	Deir Siriane	M	M	L
Dibbine	M	M	ML	Ebel El Saqi	M	M	ML	Houla	M	M	VL
Houra	M	M	ML	Kfar Kila	M	M	ML	Khiam Marjaayoun	M	M	ML

Klayaa	M	M	ML	Majdel Selem	M	M	VL	Marjaayoun	M	M	ML
Markaba	M	M	VL	Mays El-Jabal	M	M	L	Mazraat Doumiat	M	M	ML
Mazraat Sarada	M	M	ML	Mhaibib	M	M	VL	Qabrikha	M	ML	L
Qantara	M	M	L	Rab El-Thalathine	M	M	L	Saouaneh Marjayoun	M	M	VL
Talloussa	M	ML	VL	Taybeh Matjaayoun	M	M	ML	Touline	M	ML	L

## Bent Jbail

Municipality	21-Jan	22-Jan	23-Jan	Municipality	21-Jan	22-Jan	23-Jan	Municipality	21-Jan	22-Jan	23-Jan
Ain-Ebel	M	ML	VL	Aitaroun	M	M	VL	Aynata Bint Jbeil	M	M	VL
Ayta El-Chaeb	M	M	VL	Ayta El-Jabal	M	M	VL	Beit Lif	M	M	L
Beit Yahoun	M	M	VL	Bint Jbeil	M	M	VL	Borj Qalaway	M	M	ML
Braachit	M	M	VL	Chakra	M	M	VL	Debel	M	ML	VL
Deir Antar	M	M	VL	Froun	M	M	L	Ghandouriyeh Bint Jb	M	M	ML
Hanine	M	ML	VL	Hariss	M	M	VL	Hdatha	M	M	VL
Jmeyjme	M	M	VL	Kafra Bint Jbeil	M	M	L	Kfar Dounine	M	M	VL
Khirbet Selm	M	M	VL	Kounine	M	M	VL	Maroun El Ras	M	M	VL
Qalaway	M	M	L	Qaouzah	M	M	L	Qatmoun	M	ML	VL
Ramya Bint Jbeil	M	M	VL	Rchaf	M	M	VL	Rmeich	M	M	VL
Safad Al Battikh	M	M	VL	Salhaneh	M	ML	VL	Serbine	M	M	VL
Sultanieh Bint Jbeil	M	M	VL	Tibnine	M	M	VL	Tiri	M	ML	VL
Yaroun	M	M	VL	Yater	M	M	VL				

## Mont Liban

### Jbail

Municipality	21-Jan	22-Jan	23-Jan	Municipality	21-Jan	22-Jan	23-Jan	Municipality	21-Jan	22-Jan	23-Jan
Aabeydat	L	ML	M	Aalita	L	ML	M	Aamchit	M	M	M
Aarab El-Lahib	L	ML	L	Aarasta	VL	L	L	Adonis Jbeil	L	L	ML
Afqa Jbeil	VL	L	L	Ain El Delbeh Jbeil	L	ML	L	Ain El-Ghouayba	L	L	L
Ain Jrain	L	L	L	Ain Kfah	ML	M	M	Almat El Chemaliyat	L	ML	L
Almat El-Jenoubiya	L	ML	L	Aqoura	L	ML	L	Bayzoun	L	M	ML
Bchille Jbeil	L	ML	M	Bechtlida	L	L	ML	Behdaydat	L	ML	M
Beit Habbaq	ML	M	M	Bejjeh	L	M	M	Bekhaaz	L	M	M
Berbara Jbeil	ML	M	M	Bintael	L	ML	M	Birket Hjoula	L	L	ML
Blatt Jbeil	ML	ML	M	Boulhos	L	L	L	Breyj Jbeil	L	L	M
Chamat	ML	M	M	Chikhane	ML	M	M	Chmout	L	ML	M
Eddeh Jbeil	ML	M	M	Ehmej	L	ML	L	Fatre	L	ML	ML
Ferhet	ML	M	ML	Fghal	L	M	M	Frat	VL	L	L
Ghabat	L	L	L	Ghalboun	L	M	M	Gharzouz	ML	M	M
Ghofrine	ML	M	M	Habil	VL	L	L	Halate	ML	M	M
Haqel	L	L	L	Hbaline	ML	M	M	Hboub	ML	ML	M
Hdeine	L	M	L	Hema Er-Rehban	L	M	L	Hema Mar Maroun Aann	L	M	L
Hjoula	L	L	ML	Hosrayel	ML	M	M	Hsarat	ML	M	M
Hsoun	L	ML	M	Jaj	L	ML	L	Janne	VL	L	L
Jbeil	M	M	M	Jeddeyl Jbeil	ML	M	M	Jlisse	L	L	M
Jouret El-Qattine	L	L	ML	Kfar Baal Annaya	L	L	L	Kfar Kidde	L	M	M
Kfar Kouas	L	L	M	Kfar Mashoun	ML	M	M	Kfoun	L	ML	M

Kharbe Jbeil	L	ML	ML	Laqlouq	ML	M	L	Lassa	L	L	L
Lehfed	L	L	L	Maad	ML	M	M	Mar Sarkis	L	M	L
Mastita	ML	M	M	Mayfouq	L	L	L	Mazraat El Siyad	L	M	L
Mazraat El-Maaden	L	ML	L	Mechane	L	L	L	Mechmech Jbeil	L	L	L
Mehrin	ML	M	M	Mejdel El-Akoura	VL	L	L	Mghayreh Jbeil	L	ML	L
Mounsef	ML	M	M	Nahr Ibrahim	M	M	M	Qahmez	L	L	L
Qartaba	L	L	L	Qartaboun	M	M	M	Qattara Jbeil	L	L	L
Qorqraya	VL	L	L	Ramout	L	M	M	Ras Osta	L	L	M
Rihane Jbeil	ML	M	M	Sakiet El-Khayt	L	ML	M	Saqi Richmaya	L	ML	L
Sebrine	L	L	M	Seraita	L	ML	L	Souane Jbeil	L	M	L
Tadmor	L	ML	L	Tartej	L	ML	L	Torzaiya	L	ML	ML
Yanouh Jbeil	L	L	L	Zibdine Jbeil	L	ML	M				

## El Metn

Municipality	21-Jan	22-Jan	23-Jan	Municipality	21-Jan	22-Jan	23-Jan	Municipality	21-Jan	22-Jan	23-Jan
Aain El-Qabu	L	L	L	Aain El-Qach	L	M	M	Aain El-Teffaha	ML	ML	M
Aain el-Safssaf El-M	L	ML	M	Abou Mizane	L	ML	M	Ain Aar	M	M	M
Ain Alaq	ML	M	M	Ain El-Kharroube	ML	M	M	Ain El-Sendianeh	L	M	M
Ain El-Zeitoune	L	L	M	Ain Saadeh	ML	M	M	Aintoura El-Matn	ML	ML	L
Amaret Chalhoub	M	M	M	Antelias	M	M	M	Atchaneh	ML	M	M
Ayroun	L	M	M	Baabdat	L	M	M	Baouchariyeh	M	M	M
Baskinta	L	L	L	Beit Chabab	L	M	M	Beit El-Chaar	M	M	M
Beit El-Kekko	M	M	M	Beit Mery	ML	M	M	Bhersaf	L	M	M
Bikfaya	L	M	M	Biyakout	M	M	M	Bnabil	L	L	M
Bourj Hammoud	M	M	M	Bqennaya	ML	M	M	Broummana El-Matn	ML	M	M
Bsalim	ML	M	M	Bsifrine	L	M	ML	Bteghrine	L	L	L
Chaouiye	ML	M	M	Chouaya El-Matn	ML	M	M	Choueir	L	M	M
Chrine	L	L	ML	Dahr El Sawan El-Mat	L	M	M	Daychouniyeh	M	M	M
Dbayeh	M	M	M	Deir Chamra	L	ML	ML	Deir Mar Abda el Mch	ML	M	M
Deir Mar Roukouz	M	M	M	Deir Tamiche	ML	M	M	Dik El-Mehdi	M	M	M
Dikwaneh	M	M	M	Douar El-Matn	L	M	M	Fanar	M	M	M
Fraike	L	M	M	Haret El-Ballaneh	M	M	M	Hbous	M	M	M
Himlaya	L	M	M	Jal El Did	M	M	M	Jdeideh El-Metn	M	M	M
Jouar El-Matn	L	L	ML	Jouret El-Ballout	ML	M	M	Kaaqour	L	M	M
Kfar Aaqab	L	L	L	Kfertay El-Matn	L	ML	L	Khenchara	L	L	M
Khillet El-Mtain	L	M	M	Konnabat Broummana	ML	M	M	Konnabat Salima	L	M	M
Machraah El-Matn	L	L	L	Majdel Tarchich	L	M	L	Majzoub	M	M	M
Mansouriyeh El-Metn	M	M	M	Mar Boutros Karm Et-	L	M	M	Mar Chaya et Mzekke	ML	M	M
Mar Moussa Ed-Douar	L	M	M	Marjaba	L	ML	L	Masqa	L	M	M
Mayasse	L	M	M	Mazraat Deir Aoukar	M	M	M	Mazraat El-Hadirat	M	M	M
Mazraat Yachouh	M	M	M	Mchikha	L	ML	ML	Menqlet Mezher	M	M	M
Mhaydseh Matn	L	M	M	Mkalles	M	M	M	Mrouj	ML	M	L
Mtain	L	ML	L	Mtayleb	M	M	M	Nabay	ML	M	M
Naccache	M	M	M	Ouadi Chahine	L	M	M	Ouadi El-Karm El-Mat	L	L	ML
Ouata El-Mrouj	L	ML	M	Ouyoun El-Matn	L	M	M	Qornet Chehwan	ML	M	M
Qornet El-Hamra	ML	M	M	Roumieh	ML	M	M	Sfeilet Bikfaya	L	M	M
Sinn El-Fil	M	M	M	Zabbougha	L	L	ML	Zalqa	M	M	M

Zarououn	L	M	M	Zekrite	ML	M	M	Zighrine El-Matn	ML	M	M
Zouk El-Khrab	M	M	M								

## Chouf

Municipality	21-Jan	22-Jan	23-Jan	Municipality	21-Jan	22-Jan	23-Jan	Municipality	21-Jan	22-Jan	23-Jan
Aalmane El-Chouf	M	M	ML	Aammiq El-Chouf	ML	M	L	Ain Ouzein	L	L	L
Ain Qani	ML	ML	L	Ain Zhalta	L	ML	L	Ainbal	ML	M	ML
Amatour	ML	M	L	Anout	ML	M	ML	Atrine	ML	M	L
Baadarane	ML	M	ML	Baaqline	ML	M	ML	Baasir	M	M	ML
Barja	M	M	ML	Barouk	L	L	L	Bater	ML	M	L
Batloun	ML	M	ML	Bayqoun	M	M	ML	Bchetfine	ML	M	L
Beiteddine	L	M	L	Benouati Ech-Chouf	ML	M	L	Berjein	ML	M	ML
Bireh et Mtalleh	ML	M	L	Biret El-Chouf	M	M	ML	Bkechtine Ouel Mchei	L	M	ML
Bkifa El-Chouf	ML	M	ML	Botme	L	ML	L	Bqaiaa Ech-Chouf	ML	M	L
Bsaba El-Chouf	ML	M	ML	Chammis El-Chouf	M	M	ML	Chehim	ML	M	ML
Chemaarine	L	M	ML	Chourit	ML	ML	L	Daher El-Chouf	L	M	ML
Dalhoun	ML	M	ML	Damour	M	M	ML	Daraya El-Chouf	ML	M	ML
Deir El-Moukhalles	L	M	ML	Deir Baba	ML	M	L	Deir Dourit	ML	M	L
Deir El-Qamar	ML	M	ML	Deir Kouche	ML	M	L	Dibbieh	L	M	ML
Dmit	ML	M	L	Fouara Jaafar	ML	M	L	Fraidis El-Chouf	ML	ML	L
Ghabet Jaafar	ML	M	L	Gharife	ML	M	ML	Haret Jandal	ML	M	L
Hasrout	M	M	ML	Jadra	M	M	ML	Jahlieh	ML	M	L
Jbeih El-Chouf	ML	M	L	Jdeidet El-Chouf	ML	ML	ML	Jiyeh	M	M	ML
Jleilyeh	ML	M	ML	Jmailiyeh	M	M	ML	Joun	ML	M	ML
Kahlounie El-Chouf	M	M	ML	Ketermaya	M	M	ML	Kfar Faqoud	ML	M	L
Kfar Hamal	M	M	L	Kfar Him	M	M	ML	Kfar Katra	ML	ML	L
Kfar Niss	ML	M	L	Kfar hay	ML	M	ML	Kfarnabrakh	ML	M	L
Khirbet Bisri	L	M	ML	Knayse El-Chouf	L	M	L	Maaniyeh	M	M	ML
Maasser Beiteddine	ML	ML	L	Maasser El-Chouf	L	ML	L	Majdalouna	M	M	ML
Majdel El-Meouch	ML	M	L	Mazboud	M	M	ML	Mazmoura	M	M	ML
Mazraat El Chouf	ML	M	ML	Mazraat El Daher	L	M	ML	Mazraat El-Douair	L	ML	L
Mechref	ML	M	ML	Mghairie	M	M	ML	Mghayrie El-Chouf	ML	M	ML
Moukhtara	ML	ML	L	Mrusti	ML	M	L	Mtolle	M	M	ML
Naameh	M	M	ML	Niha El-Chouf	M	M	L	Ouadi Abou Youssef	L	M	L
Ouadi Ed-Deir	M	M	ML	Ouadi El-Sit	ML	M	ML	Ouadi bnehlay	ML	M	L
Qraibeh	ML	M	L	Qreiaa	L	M	ML	Rmayle El-Chouf	M	M	ML
Semqaniyeh	M	M	ML	Sibline	M	M	ML	Sirjbeil	M	M	ML
Warhanieh	ML	M	L	Werdaniyeh	M	M	ML	Zaarourieh	M	M	ML

## Baabda

Municipality	21-Jan	22-Jan	23-Jan	Municipality	21-Jan	22-Jan	23-Jan	Municipality	21-Jan	22-Jan	23-Jan
Abadiyeh	ML	M	M	Ain Mouaffaq	ML	M	M	Araiya	ML	M	M
Arbaniyeh	L	ML	M	Arsoun	L	M	M	Baabda	M	M	M
Baalchmey	M	M	M	Bmaryam	L	M	M	Bourj El-Brajneh	M	M	M
Boutchay	ML	M	M	Bsaba Baabda	M	M	M	Btekhney	L	M	M
Btibyat	L	M	M	Bzbedine	L	L	ML	Chbeniyeh	ML	M	M
Chiyah	M	M	M	Chmeisset Baabda	L	M	M	Chouit	L	M	M
Deir El-harf	L	M	M	Deir Khouna	ML	M	ML	Dlaybeh	L	M	M

Falougha	ML	M	L	Furn El-Chebbak	M	M	M	Hadath Beyrouth	M	M	M
Halaliyeh Baabda	L	M	M	Hammana	ML	M	M	Haret El Sett	ML	M	M
Haret Hamze	L	M	M	Haret Hreik	M	M	M	Hasbaiya El-Metn	L	M	M
Jouar El-Hoz	L	L	L	Jouret Arsoun	L	M	M	Kfar Chima	M	M	M
Kfar Selouane	L	ML	L	Khalouat Baabda	L	M	M	Kneisset Baabda	L	M	M
Laylakeh	M	M	M	Louayzeh Baabda	ML	M	M	Merdache	M	M	M
Mzairaa Baabda	L	M	M	Ouadi Chahrour El Ol	ML	M	M	Ouadi Chahrour El So	ML	M	M
Qalaa Baabda	L	M	M	Qhraybe Baabda	L	M	M	Qobbayaa	ML	M	M
Qornayel	L	L	ML	Qortada	L	M	ML	Qrayeh Baabda	ML	M	M
Qsaibeh Baabda	L	M	M	Qtale Baabda	L	M	M	Ras El Metn	L	M	M
Ras El-Haref	ML	M	M	Rouayset El-Ballout	L	M	M	Salima Baabda	L	M	M
Tahouitat El Ghadir	M	M	M	Tarchich	L	ML	L	Zandouqa	L	M	M

## Aley

Municipality	21-Jan	22-Jan	23-Jan	Municipality	21-Jan	22-Jan	23-Jan	Municipality	21-Jan	22-Jan	23-Jan
Abey	ML	M	L	Aghmid	L	M	M	Ain Dara	ML	M	ML
Ain Drafil	ML	M	ML	Ain El Halazoun	M	M	M	Ain El-Rmmaneh	L	M	M
Ain Jedideh	M	M	M	Ain Ksour	ML	M	ML	Ain Onoub	ML	M	M
Ain Traz	ML	M	ML	Ainab	ML	M	M	Aley	M	M	M
Aramoun	ML	M	M	Aytat	M	M	M	Azouniyeh	M	M	M
Baawerta	ML	M	ML	Badghan Oua Wadi Bad	ML	M	M	Bassatine	ML	M	M
Bayssour	ML	M	M	Bchamoun	ML	M	M	Bdadoun	ML	M	M
Behouara	ML	M	M	Bennay	ML	M	ML	Bhamdoun El-Dayaa	M	M	M
Bhamdoun El-Mhatta	M	M	M	Bkhechtey	M	M	M	Bleibel	ML	M	M
Bmakine	M	M	M	Bmehray	L	ML	L	Bouzrid	L	M	ML
Bserrine	M	M	M	Bsous	L	M	M	Btalloun	M	M	M
Btater	M	M	M	Chanay	M	M	M	Charoun	M	M	M
Chartoun	L	M	ML	Chemlane	ML	M	M	Choueifat El-Aamrous	M	M	M
Choueifat El-Oumara	M	M	M	Choueifat El-Quoubbe	M	M	M	Dakkoun	ML	M	ML
Deir Qoubel	ML	M	M	Dfoun	M	M	M	Douair El Remmaneh	L	M	ML
Ghaboun	ML	M	M	Habramoun	L	ML	M	Homs Oua Hama	ML	M	M
Houmal	ML	M	M	Jisr El Qadi	ML	M	ML	Kehaleh	L	M	ML
Keyfoun	M	M	M	Kfar Aamey	ML	M	ML	Kommatyeh	ML	M	M
Maasrati	ML	M	M	Majdel Baana	M	M	M	Mansourieh et Ain El	M	M	M
Mazraat El-Nahr	ML	M	M	Mchakhte	L	M	M	Mecherfeh	ML	M	M
Mejdlaya	ML	M	M	Mrayjat	ML	M	L	Ramliyah	ML	M	L
Rechmaya	M	M	ML	Rejmeh	ML	M	M	Remhala	ML	M	ML
Rouayset El Neemane	ML	M	M	Saoufar	M	M	M	Selfaya	ML	M	L
Sirhmoul	ML	M	M	Souq El Ghareb	M	M	M	Taazanieh	M	M	M

## Kesrouane

Municipality	21-Jan	22-Jan	23-Jan	Municipality	21-Jan	22-Jan	23-Jan	Municipality	21-Jan	22-Jan	23-Jan
Achkout	L	ML	M	Adma Oua Dafneh	M	M	M	Ain Ed-Delbe Kesroua	L	L	L
Ain El-Rihane	ML	M	M	Aintoura Kesrouane	M	M	M	Ajaltoun	L	M	M
Akaybeh Kesrouane	M	M	M	Aramoun Kesrouane	L	M	ML	Azra ouel Ozor	L	M	ML
Ballouneh	L	M	M	Batha	L	M	ML	Bekaatat Achkout	ML	ML	M
Bekaatat Kanaan	L	L	L	Bizhel	L	M	ML	Bouar	ML	M	M
Bqaatouta	ML	ML	L	Bqaq Ed-Dine	ML	M	M	Bzommar	ML	M	M

Chahtoul	L	M	M	Chnaniir	L	M	ML	Chouan	L	L	L
Daraya Kesrouane	L	M	M	Darououn	L	M	ML	Deir Baqlouch	L	M	ML
Dlebta	L	M	ML	Eghbeh	L	ML	ML	Faraya	L	ML	L
Fatka	ML	M	M	Feytroun	L	L	ML	Ghazir	ML	M	M
Ghbaleh Kesrouane	L	M	M	Ghedrass	L	L	ML	Ghosta	L	M	M
Ghynéh	ML	M	M	Harharaya w Kattine	L	M	M	Harissa Kesrouane	ML	M	ML
Hayata	L	M	ML	Hosein	L	L	ML	Hrajel	ML	M	L
Jdeideh Ghazir	L	M	M	Jeita	ML	M	M	Jounieh Ghadir	M	M	M
Jounieh Haret Sakhr	M	M	M	Jounieh Salel Alma	M	M	M	Jounieh Sarba	M	M	M
Jouret Bedrane	L	M	M	Jouret Mhad	L	ML	ML	Jouret Termos	ML	M	M
Kfar Debiane	L	ML	L	Kfar Tay Kesrouane	L	L	ML	Kfar Yassine	M	M	M
Kfour Kesrouane	ML	M	ML	Kharayeb Nahr Ibrahi	L	M	M	Klayaat Kesrouane	L	ML	M
Maarab	L	M	ML	Maaysra Kesrouane	L	ML	ML	Mayrouba	ML	M	L
Mazraat Er-Ras	M	M	M	Mazraat Mrah El-Mir	L	M	M	Mchaa El Ftouh	L	L	L
Mchaa Faraya	L	ML	L	Mchaa Kfar Dibiane	L	L	L	Mghaer	L	L	L
Mradiyah	L	M	M	Nahr Ed-Dahab	L	L	L	Nammoura Kesrouane	L	L	ML
Ouata El Jaouz	L	ML	L	Ouata Sillam	M	M	M	Raachine	L	L	M
Rayfoun	L	M	M	Safra Kesrouane	M	M	M	Shayle Kesrouane	L	M	M
Tabarja	M	M	M	Yahchouch	L	ML	ML	Zaaytreh	L	M	M
Zeytoun	ML	ML	M	Zouk Mikael	M	M	M	Zouk Mosbeh	M	M	M

## Baalbek\_Hermel

### Baalbek

Municipality	21-Jan	22-Jan	23-Jan	Municipality	21-Jan	22-Jan	23-Jan	Municipality	21-Jan	22-Jan	23-Jan
Aadous	ML	M	ML	Aamchki	ML	M	L	Aarsal	M	M	L
Ain Baalbek	M	M	L	Ain Bourday	ML	M	ML	Ain El-Benye	L	M	L
Ain El-Jaouz Baalbek	L	M	L	Ain El-Siya Chadoura	L	M	L	Al Khodr Baalbek	L	M	ML
Al Nabi Chit	ML	M	ML	Aynata Baalbek	VL	ML	L	Baalbek	ML	M	ML
Bachwat	L	L	L	Barqa	VL	L	ML	Bednayel Baalbak	L	M	L
Beit Chama	L	M	ML	Bijjaje	M	M	L	Bouday	L	ML	L
Brital	ML	M	ML	Btadi	L	ML	ML	Chaat	ML	M	L
Chaibe	L	M	L	Chlifa	L	M	ML	Chmestar	L	M	ML
Dar El-Oussa	L	L	L	Deir El-Ahmar	L	ML	ML	Deir Mar Maroun Baal	M	M	M
Douris	ML	M	ML	Fakiha	M	M	M	Hadath Baalbek	L	M	ML
Ham	L	M	L	Haour Taala	ML	M	ML	Hizzine	L	M	ML
Hlebta	L	M	M	Hosh Barada	ML	M	ML	Hosh El Dahab	ML	M	ML
Hosh El Snid	L	M	ML	Hosh El-Nabi	L	M	ML	Hosh El-Rafiq	L	M	ML
Hosh Tal Safiya	ML	M	ML	Hrebta	L	M	L	laat	ML	M	ML
Jebaa	L	M	ML	Jenta	ML	M	L	Kfar Dabach	L	M	ML
Kfar Dane	ML	M	ML	Khraibeh El-Hermel	M	M	L	Khreibet Baalbek	ML	M	L
Kneisset Baalbek	ML	M	ML	Labueh	M	M	L	Maarboun	L	M	L
Majdaloun	ML	M	ML	Maqneh	ML	M	ML	Mazraat Beit Mcheik	L	M	L
Misraya	L	M	ML	Mograq	M	M	L	Nabha El-Damdoum	L	ML	ML
Nabi Chbay	ML	M	L	Nabi Osman	M	M	L	Nahleh baalbek	ML	M	L
Ouadi El-Oss	L	M	ML	Qaa Baayoun	M	M	M	Qaa Jouar Maqiye	M	M	M
Qaa Ouadi El-Khanzir	M	M	M	Qah Baalbek	M	M	M	Qarha Baalbek	L	M	ML

Qsarnaba	L	M	ML	Ram Baalbek	L	ML	ML	Ras Baalbek El Sahl	M	M	M
Ras Baalbek El-Charq	M	M	M	Riha	L	M	ML	Saaide	ML	M	ML
Sbouba	M	M	L	Seriine El-Tahta	L	M	ML	Slouqi	L	ML	L
Taiba Baalbek	ML	M	ML	Talia	L	M	ML	Taraiya	L	M	ML
Temnin El Fawqa	L	M	ML	Temnin El-Tahta	ML	M	ML	Tfail	L	M	L
Yahfoufa	M	M	L	Yammouneh	L	ML	L	Younine	ML	M	L
Zboud	M	M	L								

## Hermel

Municipality	21-Jan	22-Jan	23-Jan	Municipality	21-Jan	22-Jan	23-Jan	Municipality	21-Jan	22-Jan	23-Jan
Charbine El-Hermel	L	M	M	Hermel Jbab	L	ML	M	Hermel	M	M	M
Maaysra El-Hermel	ML	M	M	Michaa Mrajhine	L	ML	M	Ouadi Faara	L	ML	M
Ras Baalbek - Ouadi	M	M	M	Ras Baalbek El Gharb	ML	M	M	Zighrine	L	M	M

## Akkar

### Akkar

Municipality	21-Jan	22-Jan	23-Jan	Municipality	21-Jan	22-Jan	23-Jan	Municipality	21-Jan	22-Jan	23-Jan
Aain Tinta	M	M	M	Aaiyat	M	M	M	Aakkar El-Aatiqa	L	ML	M
Aamar Akkar	M	M	M	Aamar El Baykat	M	M	M	Aamayer	M	M	M
Aamriyet Akkar	M	M	M	Aandqet	ML	M	M	Aarmeh	M	M	M
Aarqa	M	M	M	Aawaynat	M	M	M	Aayoun Akkar	M	M	M
Abboudiye	M	M	M	Ain El-Zeit	M	M	M	Ain Yaaqoub	ML	M	M
Akroum	ML	ML	M	Aridet Cheikh Zennad	M	M	M	Baldeh w Mazraat Bal	M	M	M
Barcha	M	M	M	Bardeh	M	M	M	Bebnine	M	M	M
Beino	M	M	M	Beit Ayoub	M	M	M	Beit El-Haouch	M	M	M
Beit Mellat	M	M	M	Beit Younes	ML	ML	M	Berbara Akkar	M	M	M
Berqayel	M	M	M	Bezbina	L	ML	M	Bireh Akkar	M	M	M
Borj	M	M	M	Bqerezla	M	M	M	Bzal	ML	M	M
Chane	ML	M	M	Chaqdouf	M	M	M	Charbila	M	M	M
Cheikh Mohammad	M	M	M	Cheikh Taba Es-Sahl	M	M	M	Cheikh Taba	M	M	M
Cheikh Zennad	M	M	M	Cheikhlar	M	M	M	Chir Hmairine	M	M	M
Daghle	M	M	M	Dahr Laissine	M	M	M	Darine	M	M	M
Dawra	ML	M	M	Dawsa w Baghdadi	M	M	M	Dayret Nahr El-Kabir	M	M	M
Deir Dalloum	M	M	M	Deir Jennine	M	M	M	Denbou	ML	M	M
Dibbabiyyeh	M	M	M	Douair Aadwiyeh	M	M	M	Fassikine	M	M	M
Fnaydek	ML	ML	M	Fraydes Akkar	M	M	M	Ghazayle	M	M	M
Habchit	L	M	M	Hakour	M	M	M	Halba	M	M	M
Haouchab	M	M	M	Hayssat	M	M	M	Haytla	M	M	M
Hayzouq	M	M	M	Hedd	M	M	M	Hmaira Akkar	M	M	M
Hmaiss Akkar	M	M	M	Hnaider	M	M	M	Hokr Ed-Dahri	M	M	M
Hokr Etti	M	M	M	Hokr Jouret Srar	M	M	M	Houaich	ML	M	M
Hrar	ML	M	M	Idbil	M	M	M	Ilal	M	M	M
Janine	M	M	M	Jdeidet El-JoumeH	M	M	M	Jdeidet El-Kaiteh	M	M	M
Jebayel	M	M	M	Kafr	L	M	M	Kafr	M	M	M
Karm Asfour	M	M	M	Kfar Melki Akkar	M	M	M	Kfar Noun	M	M	M
Kfarharra	M	M	M	Khalsa	M	M	M	Kharnoubet Akkar	M	M	M



Khirbet Daoud Aakkar	M	M	M	Khirbet El Remmane	M	M	M	Khirbet Shar	M	M	M
Khoreybet El-Jindi	M	M	M	Khreibet Aakkar	M	M	M	Kneisset Aakkar	M	M	M
Kneisset Hnaider	M	ML	M	Knisse	M	M	M	Kroum El-Aarab	M	M	M
Kwachra	M	M	M	Kweykhat	M	M	M	Machta Hammoud	M	M	M
Majdala	M	M	M	Majdel Akkar	M	M	M	Mar Touma	M	M	M
Marlaya Melhem	M	M	M	Mashha	M	M	M	Massoudiye	M	M	M
Mazraat Beit Ghattas	M	M	M	Mazraat En-Nahriye	M	M	M	Mechmech	L	ML	M
Memneh	L	L	ML	Mhammara	M	M	M	Mighraq Aakkar	M	M	M
Minyara	M	M	M	Moqayteh	M	M	M	Mounjez	M	M	M
Msalla	M	M	M	Mzeihmeh	M	M	M	Nfaiseh	M	M	M
Noura Et-Tahta	M	M	M	Ouadi El-Haour	M	M	M	Ouadi El-Jamous	M	M	M
Ouyoun El-Ghizlane	M	M	M	Qaabarine	M	M	M	Qabaait	L	ML	M
Qachlaq	M	M	M	Qantara Aakkar	M	M	M	Qarha Aakkar	M	ML	M
Qarqaf	M	M	M	Qboula	M	M	M	Qleiaat Aakkar	M	M	M
Qloud El-Baqie	M	M	M	Qobaiyat Aakkar	ML	ML	M	Qobbat Chamrat	M	M	M
Qorayat	ML	ML	M	Qornet Aakkar	M	M	M	Qsair Aakkar	M	M	M
Rahbe	M	M	M	Rihaniyet Aakkar	M	M	M	Rmah	M	M	M
Rmoul	M	M	M	Saadine	M	M	M	Sadaqa	M	M	M
Saidnaya	M	M	M	Sammouniye	M	M	M	Sayssouq	M	M	M
Semmaqiye	M	M	M	Semmaqli	M	M	M	Sfinet El-Dreib	M	M	M
Sfinet El-Qaitaa	ML	M	M	Sindyanet Zeidane	M	M	M	Souaisset Aakkar	M	M	M
Srar	M	M	M	Tal Abbas El Gharby	M	M	M	Tal Abbas El-Charqy	M	M	M
Tal Biret	M	M	M	Tal Hmayra	M	M	M	Tal Maayan Tal Kiri	M	M	M
Tal Sibel	M	M	M	Tallet Chattaha	M	M	M	Tikrit	M	M	M
Tleil	M	M	M	Tshea	L	ML	M	Zawarib	M	M	M
Zouq El Hosniyeh	M	M	M	Zouq El-Haddara	M	M	M	Zouq El-Hbalsa	M	M	M
Zouq El-Moqachrine	M	M	M								

## Sud

### Sour

Municipality	21-Jan	22-Jan	23-Jan	Municipality	21-Jan	22-Jan	23-Jan	Municipality	21-Jan	22-Jan	23-Jan
Aaiyeh	M	M	VL	Aalma El-Chaab	L	M	L	Aaytit	M	M	L
Abbassiyeh Sour	M	M	L	Abou Chech	ML	M	L	Ain Abou Abdallah	M	M	L
Ain Baal	M	M	L	Arzoun	M	M	ML	Aziyeh	ML	M	L
Baflaya	M	M	ML	Barich	M	M	ML	Batouliyah	M	M	L
Bayad	M	M	L	Bazouriyeh	M	M	L	Bediass	M	M	ML
Bestiyat	M	M	ML	Borj El Chemali	M	M	L	Borj En-Naqoura	ML	M	L
Borj Rahhal	M	M	ML	Boustane	M	M	L	Btaychiyah	ML	M	L
Chaaitiye	M	M	L	Chameh	ML	M	L	Chehabiye	M	M	L
Chehour	ML	M	L	Chihine	M	M	L	Debaal Sour	M	M	L
Deir Amess	M	M	L	Deir Kifa	M	M	L	Deir Qanoun El-Ain	M	M	L
Deir Qanoun El-Naher	M	M	ML	Derdghaiya	M	M	ML	Dhayra	M	M	L
Halloussiyeh	M	M	ML	Hamoul	L	M	L	Hanaouey	M	M	L
Henniye	M	M	L	Hmairi Sour	M	M	ML	Iskandarouna Sour	ML	M	L
Jbal El Botom	M	M	L	Jebbin	M	M	L	Jennata	M	M	ML
Jijim	L	M	L	Jouaiya	M	M	L	Kneisset Sour	M	M	L

Maarake	M	M	ML	Maaroub	M	M	ML	Majadel	M	M	L
Majdalzoun	M	M	L	Mansouri Sour	M	M	L	Marnba	ML	M	L
Marouahine	M	M	VL	Mazraat El-Zalloutiy	M	M	L	Mazraat Mechref	M	M	L
Mazraat Tayr Semhat	L	M	ML	Mheilib	M	M	L	Neffakhiyeh	M	M	L
Niha Sour	M	M	ML	Ouadi Jilo	M	M	L	Qana	M	M	L
Qolaileh Sour	M	M	L	Rechknayan	M	M	L	Rmadiyah	M	M	L
Selha Sour	M	M	L	Siddiqine	M	M	VL	Sour	M	M	L
Srifa	M	M	ML	Tayr Debbe	M	M	ML	Tayr Felsay	M	M	ML
Tayr Harfa	M	M	L	Touayri	M	M	L	Toura	M	M	ML
Yanouh Sour	M	M	ML	Yarine	M	M	L	Zebqine	ML	M	L

## Saida

Municipality	21-Jan	22-Jan	23-Jan	Municipality	21-Jan	22-Jan	23-Jan	Municipality	21-Jan	22-Jan	23-Jan
Aanqoun	M	M	ML	Aaqtanit	M	M	ML	Aarab Ej-Jall	M	M	ML
Aarab Tabbaya	M	M	ML	Abra Saida	M	M	ML	Adloun	M	M	ML
Adousiyeh	M	M	ML	Ain-El-Deleb	M	M	ML	Arzai	M	M	ML
Babliyah	M	M	ML	Barty	M	M	L	Bissariyeh	M	M	ML
Bnaafoul	M	M	ML	Bqosta	M	M	ML	Bramiy	M	M	ML
Daoudiyeh	M	M	ML	Dareb El-Sim	M	M	ML	Erkay	M	M	ML
Ghassanieh	M	M	ML	Ghazieh	M	M	ML	Hajjeh	M	M	ML
Haret Saida	M	M	ML	Hartiyeh	M	M	ML	Hlaliye Saida	M	M	ML
Insariyat	M	M	ML	Jazira Saida	M	M	ML	Kafar Bit	M	M	ML
Kaoutariyet El-Siyad	M	M	ML	Kfar Chellal	M	M	ML	Kfar Hatta Saida	M	M	ML
Kfar Milke Saida	M	M	ML	Khartoum	M	M	ML	Khaziz	M	M	ML
Khirbet Ed-Douair Sa	M	M	ML	Khirbet El-Bassal	M	M	ML	Khrayeb Saida	M	M	ML
Loubieh	M	M	ML	Maghdouche	M	M	ML	Majdelyoun	M	M	ML
Matariyet El-Choumar	M	M	ML	Matayriyeh	M	M	ML	Mazraat 'Mseileh	M	M	ML
Mazraat 'Snaiber	M	M	ML	Mazraat Aarab Soukka	M	M	ML	Mazraat Deir Taqla	M	M	ML
Mazraat El Yahoudiye	M	M	ML	Mazraat El-Housseini	M	M	ML	Mazraat El-Mhaydaleh	M	M	ML
Mazraat El-Ouasta	M	M	ML	Mazraat Jamjim	M	M	ML	Mazraat Kaoutariyet	M	M	ML
Mazraat Kfar Badda	M	M	ML	Mazraat Oussamiyat	M	M	ML	Mazraat Sari	M	M	ML
Mazraat Sinai	M	M	ML	Meemariyeh	M	M	ML	Merouaniyeh	M	M	ML
Miyeh ou Miyeh	M	M	ML	Najjariyeh	M	M	ML	Qaaqaiyat El-Snaouba	M	M	ML
Qnarit	M	M	ML	Qraiye Saida	M	M	ML	Saida Ed-Dekermane	M	M	ML
Saida El-Oustani	M	M	ML	Saida El-Qadimeh	M	M	ML	Saida Kefraya	M	M	ML
Saksakiyeh	M	M	L	Salhigh Saida	M	M	ML	Sarafand	M	M	ML
Sfenta	ML	M	L	Tafahta	M	M	ML	Tanbourit	M	M	ML
Tebna	M	M	ML	Zaghdraiya	M	M	ML	Zeita	M	M	ML
Zrariyeh	M	M	ML								

## Jezzine

Municipality	21-Jan	22-Jan	23-Jan	Municipality	21-Jan	22-Jan	23-Jan	Municipality	21-Jan	22-Jan	23-Jan
Ain El-Mir (El Estab	M	M	ML	Anane	L	M	ML	Aramta	M	M	ML
Ariya	ML	M	L	Aychiyeh	ML	M	ML	Azour	L	M	ML
Baba	L	M	L	Bayssour Jezzine	M	M	ML	Benoueteh Jezzine	ML	M	ML
Bhannine	ML	M	L	Bisri	L	M	L	Bkassine	L	M	ML
Bouslaya	L	ML	L	Btedine El-Leqech	L	M	L	Chbail	L	ML	L
Choualiq Jezzine	M	M	ML	Dahr Ed-Deir	ML	M	L	Deir El Qattine	L	M	L

Demachqiyeh	M	M	ML	Ghabbatiyeh	ML	M	ML	Harf Jezzine	L	M	L
Hassaniyeh	M	M	ML	Haytouleh	M	M	ML	Haytura	L	M	L
Hidab	ML	M	ML	Homsiyeh	L	M	L	Jabal Toura	ML	M	ML
Jarmaq	M	M	ML	Jensnaya	M	M	ML	Jernaya	M	M	ML
Jezzine	M	M	ML	Karkha	ML	M	ML	Kfar Falous	M	M	ML
Kfar Houna	ML	M	ML	Kfar Jarrah	M	M	ML	Lebaa	M	M	ML
Louayzet Jezzine	ML	M	ML	Machmouche	L	M	ML	Mahmoudiyeh Jezzine	M	M	ML
Maknounye Jezzine	L	M	L	Maraat Ouazaiyeh	M	M	ML	Mazraat Daraya	ML	M	ML
Mazraat El-Aarqoub	L	M	L	Mazraat El-Mathane	L	M	L	Mazraat El-Rahbane	L	ML	L
Mazraat Khallet Khaz	ML	M	L	Mazraat Louzid (Loua	L	ML	L	Mazraat Qrouh	M	M	ML
Mazraat Tamra	M	M	ML	Mazraat Zighrine Jez	ML	M	ML	Mazraat	L	M	L
Mharbiyeh	M	M	ML	Midane Jezzine	ML	M	L	Mjeydel Jezzine	M	M	ML
Mlikh	ML	M	ML	Mrah El-Hbasse	M	M	ML	Ouadi Baanqoudaine	M	M	ML
Ouadi El-Laymoun	M	M	ML	Ouardiyeh	VL	ML	L	Qabaa Jezzine	L	M	L
Qatrani	ML	M	L	Qaytouleh	L	M	L	Qtaleh Jezzine	L	M	L
Rihane Jezzine	M	M	ML	Rimat	ML	M	L	Roum	L	M	L
Roummanet	M	M	ML	Sabbah	L	M	ML	Saydoun	L	M	L
Sfaray	L	M	ML	Snaya	L	M	L	Sojoud	ML	M	ML
Srayri	ML	M	ML	Taaid	ML	M	L	Wadi Jezzine	ML	ML	ML
Zhalta	L	M	L								

## Bekaa

### West Bekaa

Municipality	21-Jan	22-Jan	23-Jan	Municipality	21-Jan	22-Jan	23-Jan	Municipality	21-Jan	22-Jan	23-Jan
Aammq BG	ML	M	ML	Ain El Tineh BG	ML	M	ML	Ain Zebdeh	ML	M	ML
Ana	ML	M	ML	Aytanit	L	M	ML	Baaloul BG	ML	M	ML
Bab Mareh	ML	M	ML	Chouberqiye Aammq	ML	M	ML	Dakoue	ML	M	ML
Deir Ain El-Jaouze	ML	M	ML	Deir Tahniche	ML	M	ML	Ghaza	ML	M	ML
Harime El-Soughra	ML	M	ML	Hoch Harimeh	ML	M	ML	Jazira BG	ML	M	ML
Jib Jennine	ML	M	ML	Kamed-El-Laouz	M	M	ML	Kefraya BG	L	ML	ML
Khiara El Atika	ML	M	ML	Khiara	ML	M	ML	Khirbet Qanafar	ML	M	ML
Lala	ML	M	ML	Lebbaya BG	ML	M	ML	Loussa	M	M	ML
Machghara	ML	M	ML	Manara (Hammara) BG	ML	ML	L	Mansoura BG	ML	M	ML
Marej BG	ML	M	ML	Maydoun	M	M	ML	Ouaqf BG	ML	M	ML
Qaraaoun	ML	M	ML	Qelya	M	M	L	Raouda (Istabel)	ML	M	ML
Saghbine	ML	ML	ML	Sohmor	ML	M	ML	Soltan Yacoub el Ara	ML	M	ML
Souairy	M	M	ML	Sultan Yaacoub	ML	M	ML	Tal Znoub	ML	M	ML
Yehmor BG	ML	M	L	Zilaya	ML	M	L				

### Zahle

Municipality	21-Jan	22-Jan	23-Jan	Municipality	21-Jan	22-Jan	23-Jan	Municipality	21-Jan	22-Jan	23-Jan
Aanjar (Haouch Mouss	ML	M	ML	Ablah	ML	M	ML	Ain Kfarzabad	ML	M	L
Ali-El-Nahri	ML	M	ML	Bar Elias	ML	M	ML	Bouarej	ML	M	ML
Cheberqiyet Tabet	ML	M	ML	Chtaura	ML	M	ML	Deir El Ghazal	ML	M	L
Delhamiyet Zahle	ML	M	ML	Ferzol	L	M	ML	Haouch El-Ghanam	ML	M	ML
Haouch Es-Siyadeh	ML	M	ML	Haouch Hala	ML	M	ML	Haouch Mandara	ML	M	ML

Haouch Qayssar	ML	M	L	Hezerta	L	M	L	Hosh Moussa	ML	M	ML
Jdita	ML	M	ML	Kfarzabad	M	M	L	Ksara	ML	M	ML
Majdel Aanjar	ML	M	L	Makssi	ML	M	ML	Massa	ML	M	ML
Mazraat Er-Remtaniye	ML	M	L	Mrayjat Zahle	ML	M	L	Mzaraa Zahle	ML	M	L
Nabi Ayla	ML	M	ML	Nasriyet Rizk	ML	M	ML	Nasriyet Zahle	ML	M	ML
Niha Zahle	L	M	ML	Ouadi Ed-Deloum	ML	M	L	Ouadi El-Arayech	L	M	ML
Qaa El Rim	L	M	L	Qab Elias	ML	M	ML	Qousaya	ML	M	L
Rhit	ML	M	ML	Riyak	ML	M	ML	Saadnayel	ML	M	ML
Taal El-Akhdar	ML	M	ML	Taalbeya	ML	M	ML	Taanayel	ML	M	ML
Talamara	ML	M	ML	Tcheflik Edde Haouch	ML	M	L	Tcheflik Qiqano	ML	M	L
Terbol Zahle	ML	M	ML	Touaite Zahle	L	M	L	Zahle Aradi	L	M	ML
Zahle El-Berbara	ML	M	L	Zahle El-Maallaqa	ML	M	ML	Zahle El-Midane	ML	M	ML
Zahle Er-Rassiye	ML	M	ML	Zahle Haouch El-Ouma	ML	M	ML	Zahle Haouch El-Ouma	ML	M	ML
Zahle Haouch Ez-Zara	ML	M	ML	Zahle Maalaqa Aradi	ML	M	ML	Zahle Mar Antonios	ML	M	ML
Zahle Mar Elias	ML	M	ML	Zahle Mar Gerios	ML	M	ML	Zahle Saydet En-Naja	L	M	ML
Zebdoul	L	M	ML								

## Rachaiya

Municipality	21-Jan	22-Jan	23-Jan	Municipality	21-Jan	22-Jan	23-Jan	Municipality	21-Jan	22-Jan	23-Jan
Ain Arab Rachaiya	M	M	L	Ain Ata	ML	ML	L	Ain Harche	M	M	L
Aqabe Rachaya	M	M	ML	Ayha	ML	ML	L	Ayta El Fokhar	M	M	L
Bakifa Rachaya	M	M	L	Bakka	M	M	L	Beit Lahya	M	M	ML
Bireh Rachaiya	M	M	ML	Daher El Ahmar	M	M	ML	Deir El-Achayer	L	ML	L
Heloua Rachaiya	ML	ML	L	Hoch El Qannabeh Rac	ML	ML	L	Kaoukaba Bou Arab	ML	M	ML
Kfar Danis	M	M	ML	Kfar Mechki	ML	M	ML	Kfar Qouq	ML	ML	L
Kherbet Rouha	M	M	ML	Majdel Balhiss	ML	M	ML	Mdoukha	M	M	L
Mhaydseh Rachaiya	ML	M	ML	Nabi Safa	ML	M	ML	Rachaiya	ML	ML	L
Rafid Rachaiya	M	M	ML	Selsata (Mazraat Dei	L	L	L	Tannoura	M	M	ML
Yanta	ML	ML	L								

## Beyrouth

### Beyrouth

Municipality	21-Jan	22-Jan	23-Jan	Municipality	21-Jan	22-Jan	23-Jan	Municipality	21-Jan	22-Jan	23-Jan
Achrafieh	M	M	M	Ain el-Mreisse	M	M	M	Bachoura	M	M	M
Beirut Central Distr	M	M	M	Marfai	M	M	M	Mazraa	M	M	M
Medaouar	M	M	M	Minet el-Hosn	M	M	M	Mwssaitbeh	M	M	M
Ras Beirut	M	M	M	Rmeil	M	M	M	Saifi	M	M	M
Zqaq el-Blat	M	M	M								



## نشرة الطقس الصادرة عن مصلحة الأرصاد الجوية بالمديرية العامة للطيران المدني

**النشرة: المسائية**

**الأربعاء: 20 كانون الثاني 2016**

**الحالة العامة:** انحسر المنخفض الجوي (URSULA) عن الحوض الشرقي للمتوسط ليحل طقس مستقر ليومي الخميس والجمعة استعداداً لقدم العاصفة الثلجية THALASSA اعتباراً من يوم السبت.

**الخميس:** قليل الغيوم الى غائم جزئياً بسحب مرتفعة مع ارتفاع محدود بدرجات الحرارة، (تحذير من تكون الجليد على الطرقات الجبلية خلال ساعات الصباح الأولى وخلال الليل).

**الجمعة:** غائم جزئياً الى غائم أحياناً بسحب متوسطة ومرتفعة وارتفاع اضافي طفيف بدرجات الحرارة.

**السبت:** غائم جزئياً الى غائم مع بداية انخفاض بدرجات الحرارة وتساقط أمطار خفيفة متفرقة تشتد اعتباراً من فترة بعد الظهر وتكون مترافقة برياح ناشطة وعواصف رعديّة متفرقة وتلوج على ارتفاع 1400م تتدنى ليلاً لتلامس 1200م.

الجمعة		الخميس		الأربعاء		درجات الحرارة المتوقعة	
18/11	19/10	17/10	18/9	15/12	17/9	صور	على الساحل
19/12		18/11		17/10		بيروت	
16/10		15/9		14/9		طرابلس	
11/6	11/4	10/5	10/3	8/4	8/2	بيصور	فوق الجبال
9/4		8/3		6/2		قرطبا	
-/-		-/-		-/-		فقرا	
3/3-		2/4-		3-/صفر		الأرز	
13/6	13/5	12/5	12/4	10/5	10/4	القرعون	في الداخل
12/6		11/5		9/5		مرجعيون	
13/5		12/4		10/4		زحلة	

**الرياح السطحية:** شمالية غربية الى شمالية، سرعتها بين 8 و 25 كلم/س.

**الإنقشاع:** جيد.

**الرطوبة النسبية على الساحل:** بين 50 و 75%.

**حرارة سطح الماء:** 18°م.

**حال البحر:** منخفض ارتفاع الموج.

**أي ما يعادل:** 766 ملم زئبق

**الضغط الجوي:** 1022 hPa.

**ساعة غروب الشمس:** 16:57

**ساعة شروق الشمس:** 06:42