

# Lebanon Fire Risk Bulletin



CIVIL DEDEFENCE

*Refer to cadast condition.*

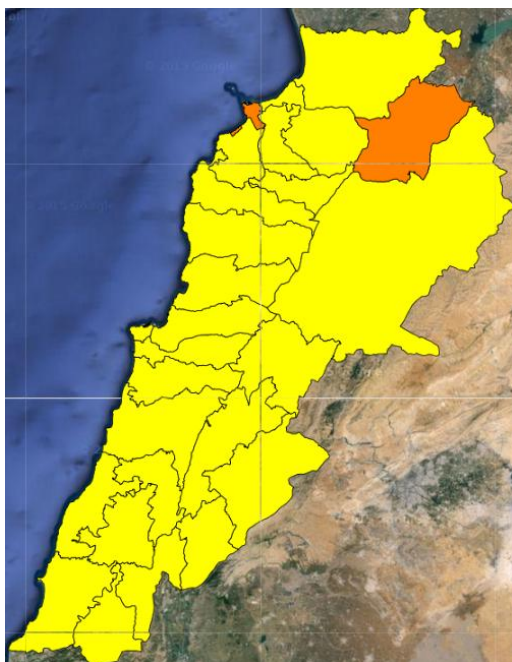
*General description of potential fire risk situation*

Symbol	Level of risk	Meaning and actions
VL	Very low	Very low fire risk. Controlled burning operations can be hardly executed due to high fuel moisture content. Normally wildfires self-extinguish.
L	Low	Low fire risk. Controlled burning operations can be executed with a reasonable degree of safety.
ML	Medium low	Medium-low fire risk. Controlled burning operations can be executed in safety conditions. All the fires need to be extinguished.
M	Medium	Medium fire risk. Controlled burning operations would be avoided. All the fires need to be very well extinguished.
M	Medium high	Controlled burning is not recommended. Open flame will start fires. Cured grasslands and forest litter will burn readily. Spread is moderate in forests and fast in exposed areas. Patrolling and monitoring is suggested. Fight fires with direct attack and all available resources.
H	High	Ignition can occur easily with fast spread in grass, shrubs and forests. Fires will be very hot with crowning and short to medium spotting. Direct attack on the head may not be possible requiring indirect methods on flanks. Patrolling and monitoring the territory is highly suggested.
E	Extreme	Ignition can occur also from sparks. Fires will be extremely hot with fast rate of spread. Control may not be possible during day due to long range spotting and crowning. Suppression forces should limit efforts to limiting lateral spread. Damage potential total. Patrolling and monitoring the territory is highly suggested.

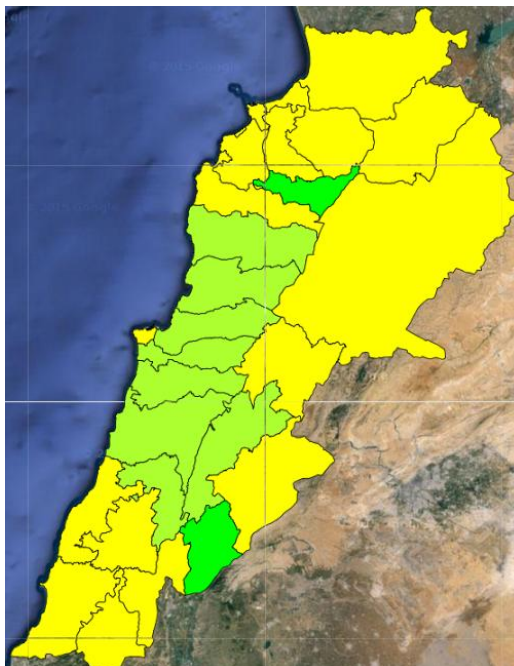
**Beirut, 21 March 2016**

# FIRE RISK INDEX

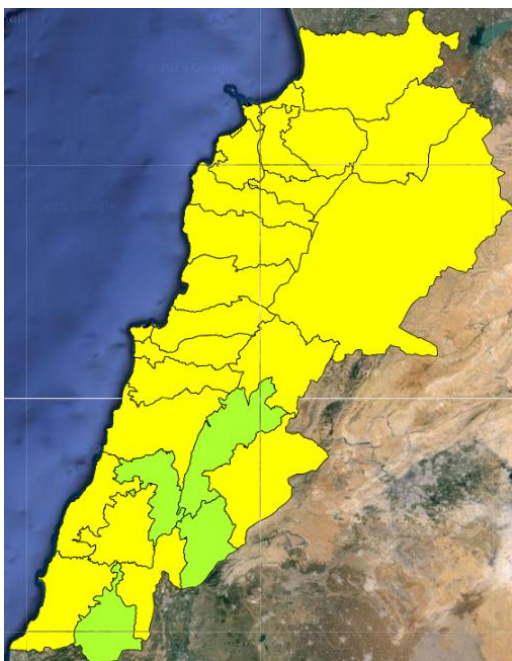
20 March



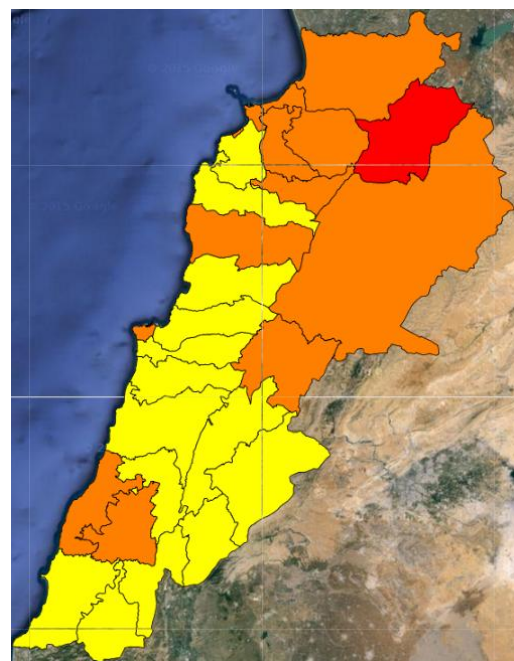
21 March



22 March



23 March



Layer Legend:

Lebanon Wildfire Risk Index 1

Data: Run: 21/03/2016 00:00. Forecast for 21

Model: RISICO for the Republic of Lebanon

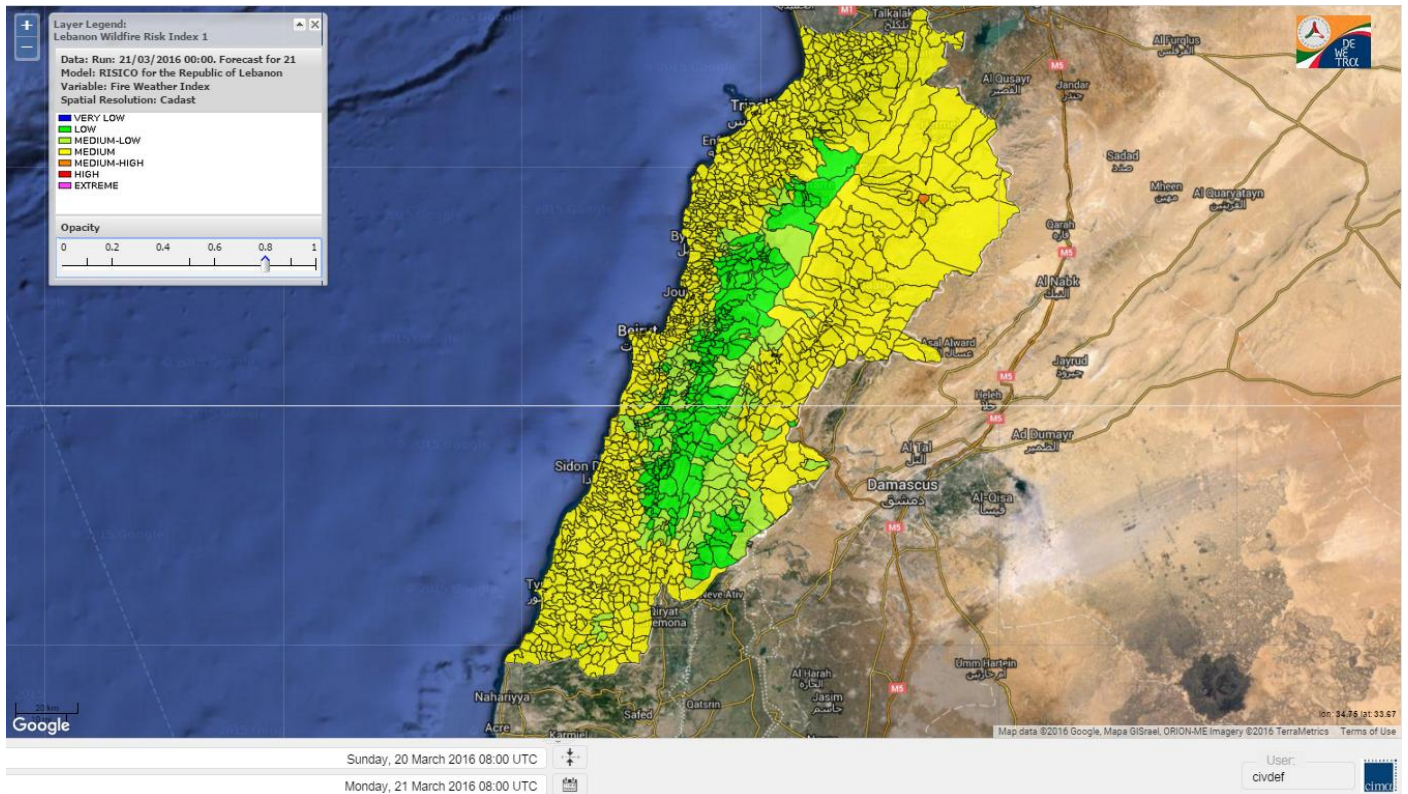
Variable: Fire Weather Index

Spatial Resolution: Caza

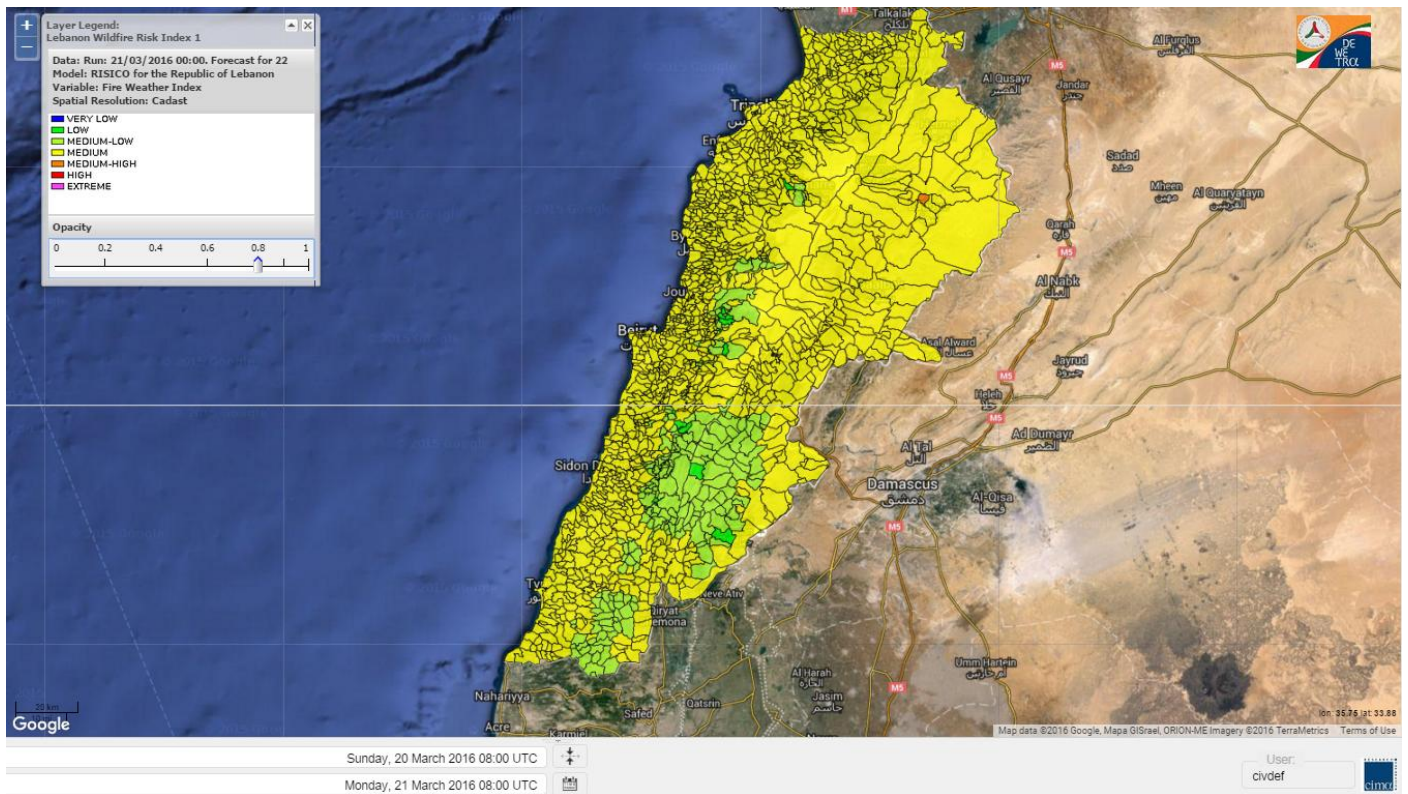
- VERY LOW
- LOW
- MEDIUM-LOW
- MEDIUM
- MEDIUM-HIGH
- HIGH
- EXTREME



# Lebanon for 21 March 2016

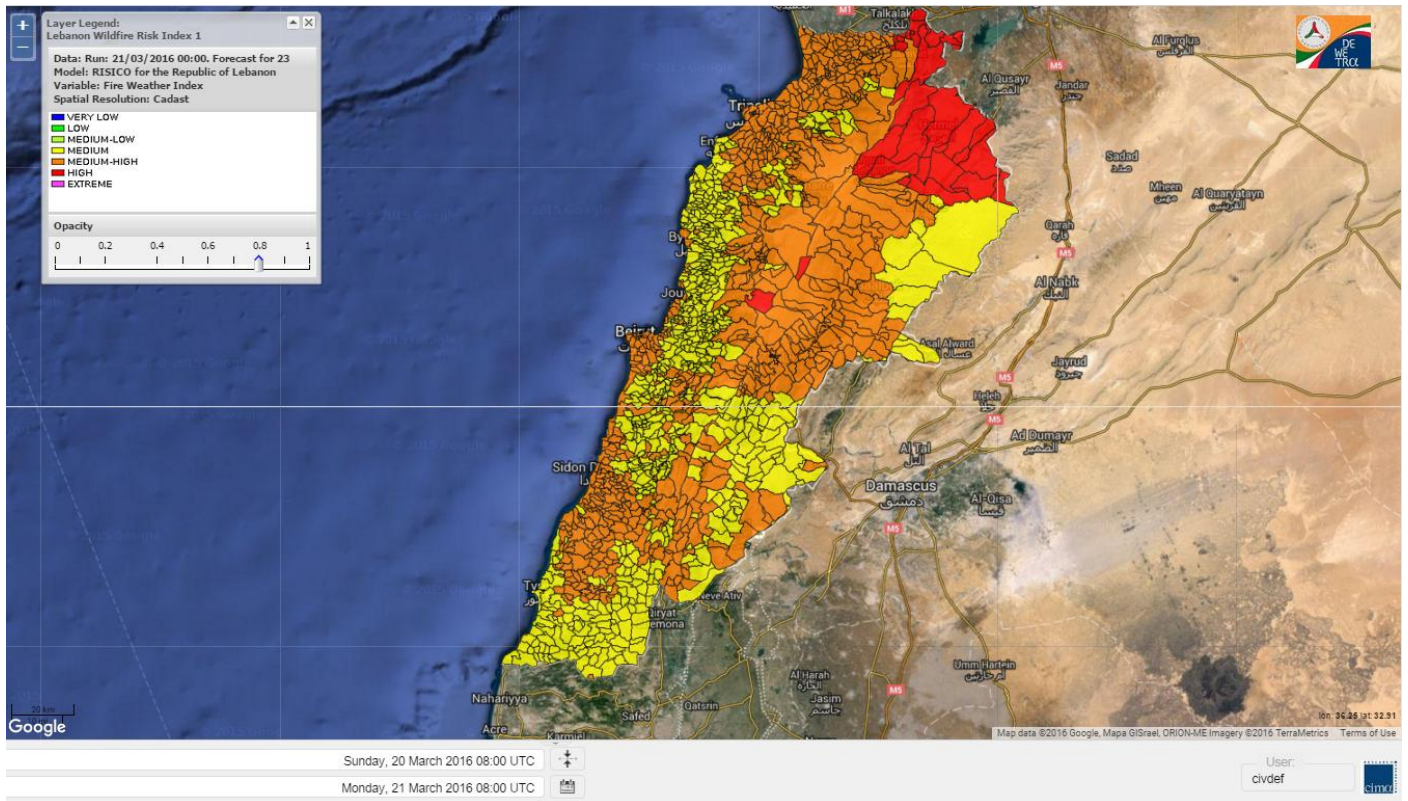


# Lebanon for 22 March 2016

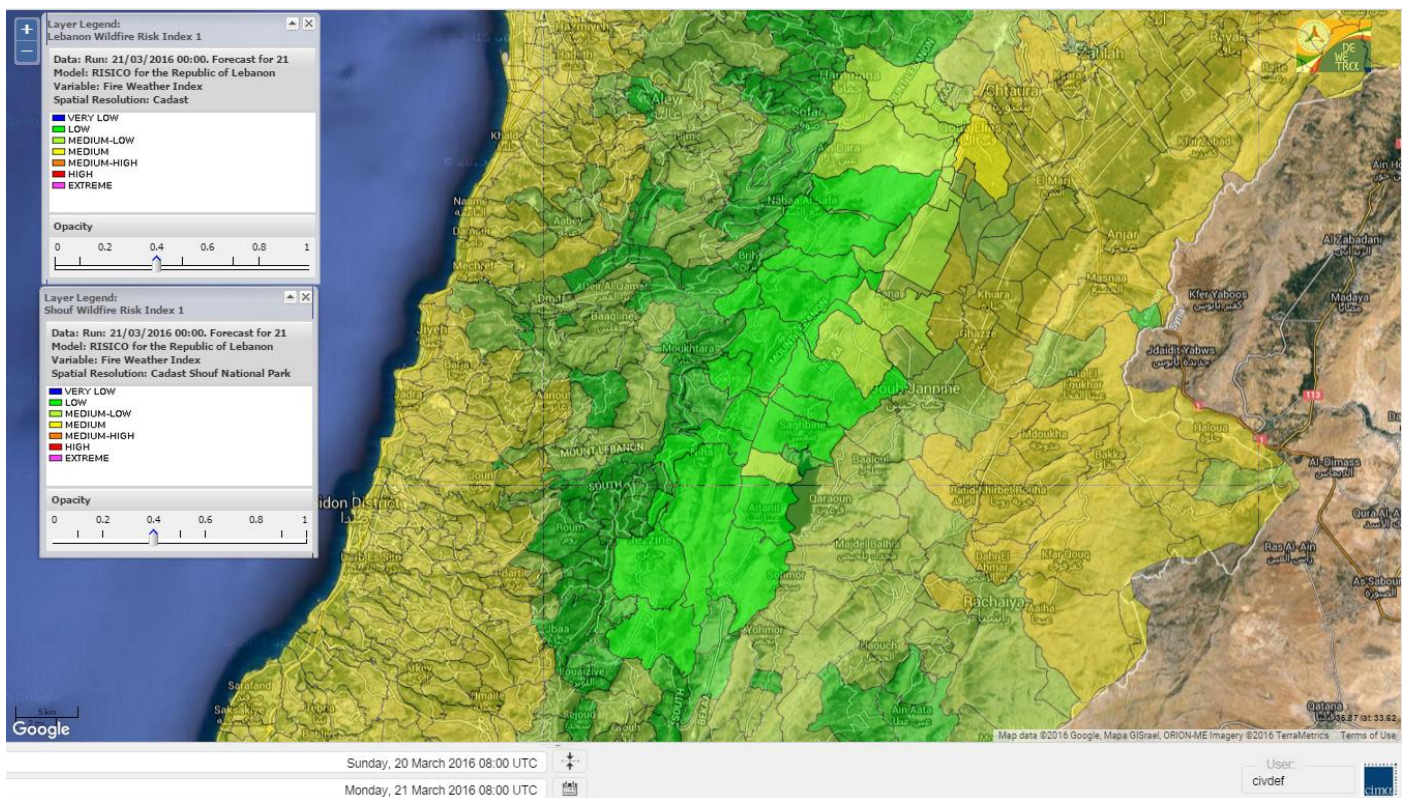




# Lebanon for 23 March 2016

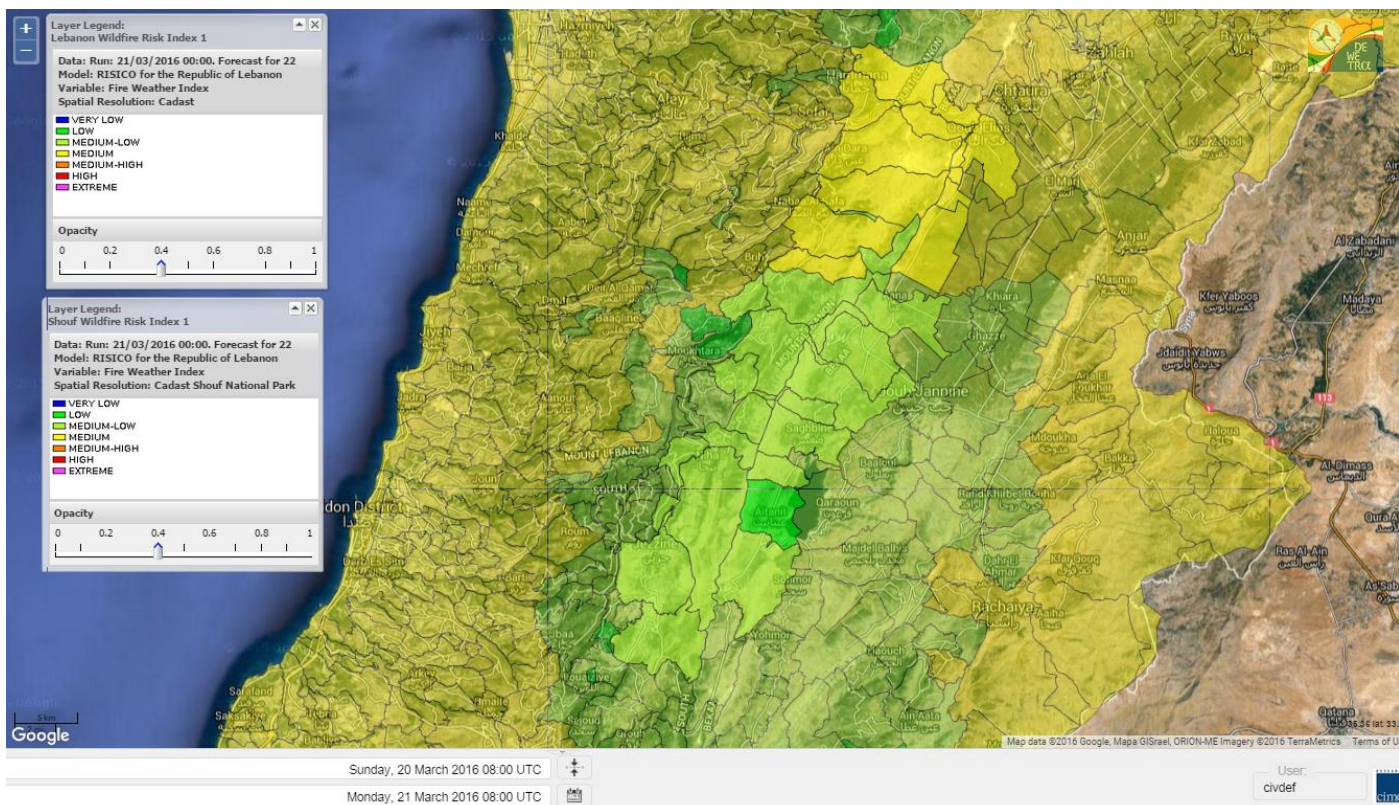


# Shouf Biosphere Reserve Forecast for 21 March 2016

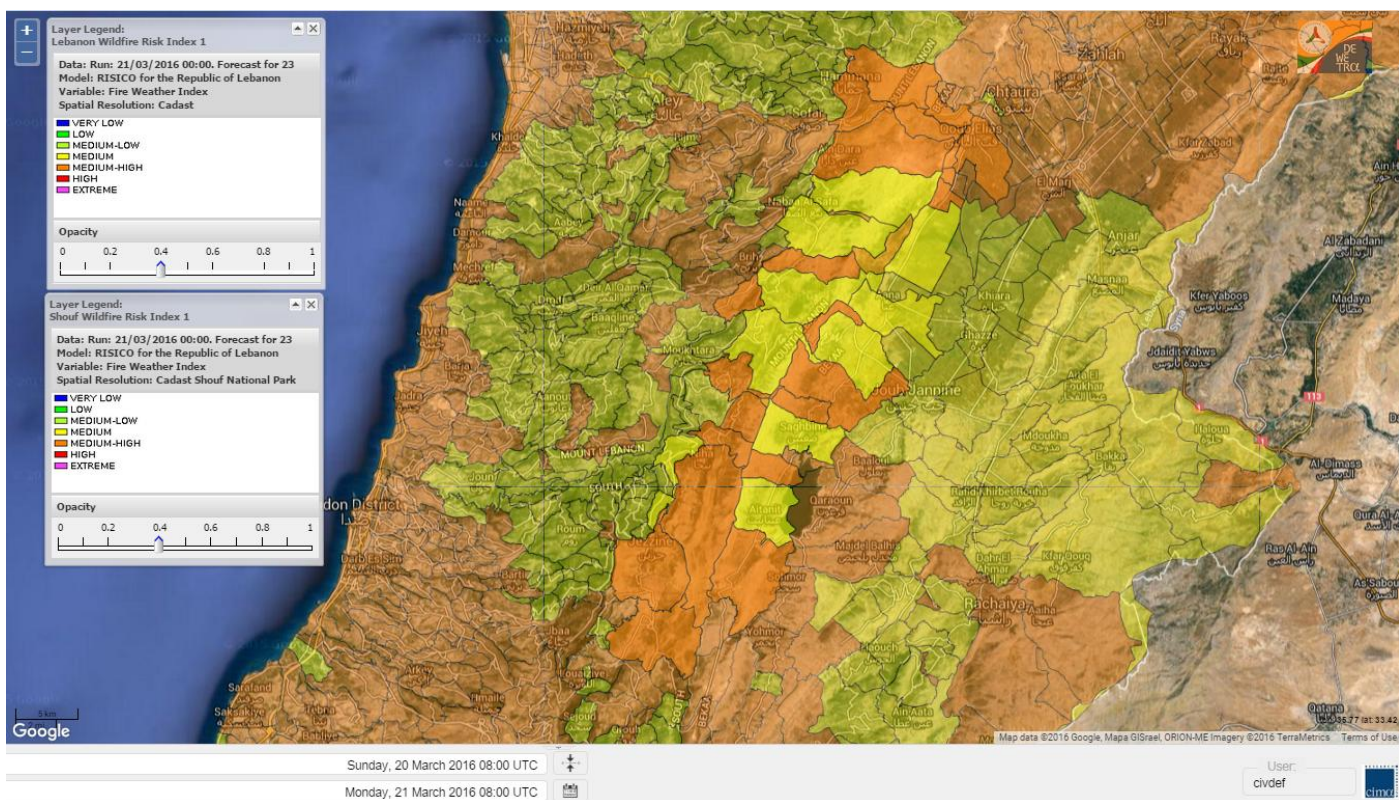




# Shouf Biosphere Reserve Forecast for 22 March 2016

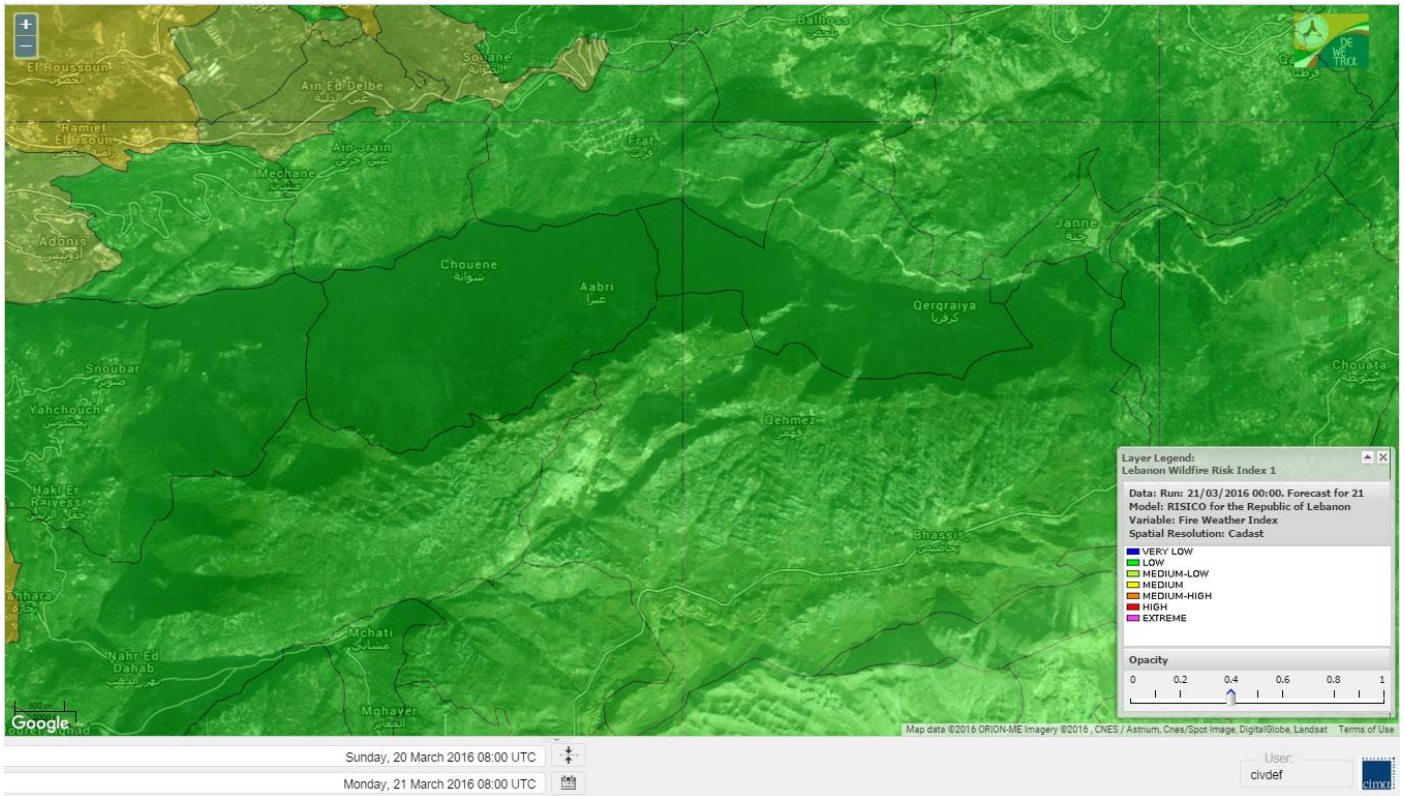


# Shouf Biosphere Reserve Forecast for 23 March 2016

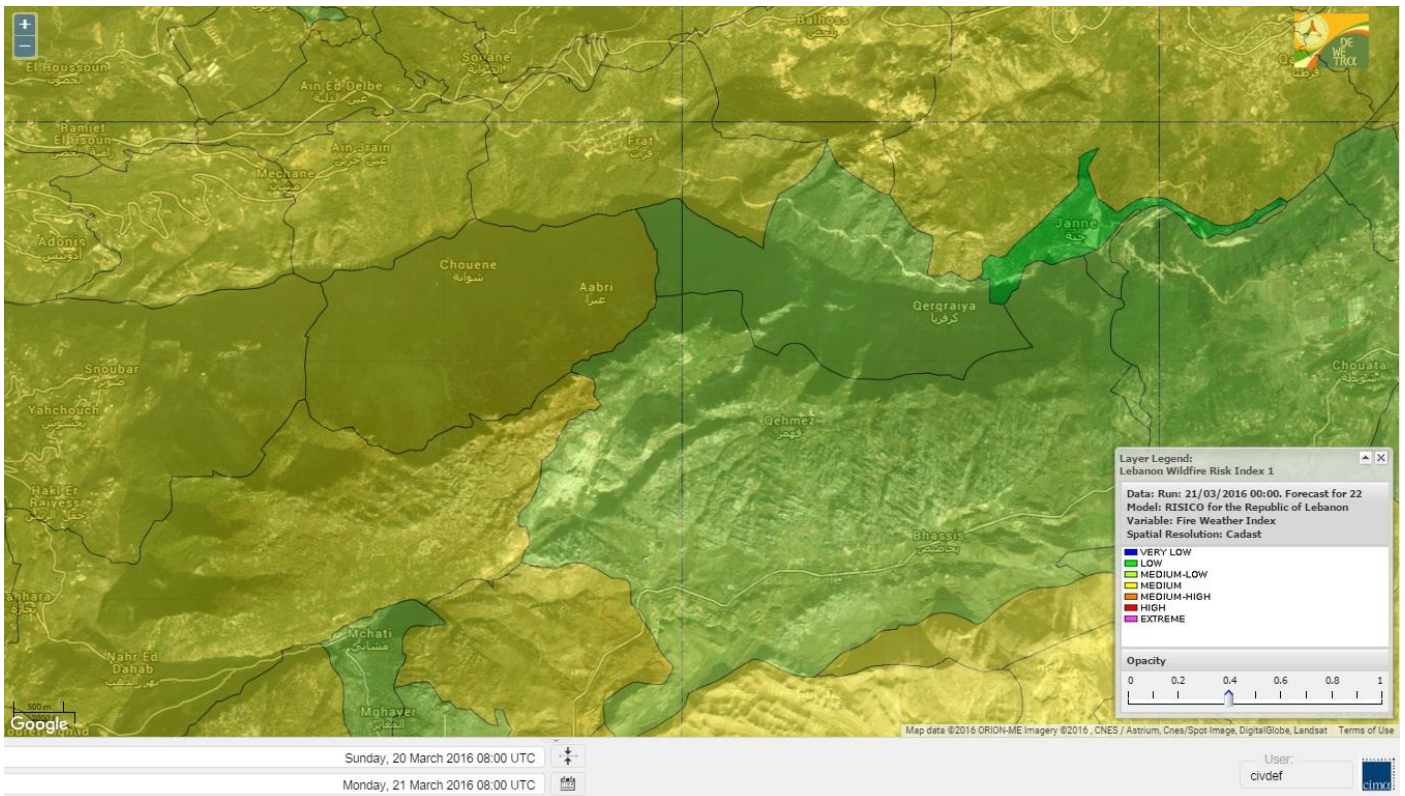




# Jabal Moussa Reserve Forecast for 21 March 2016

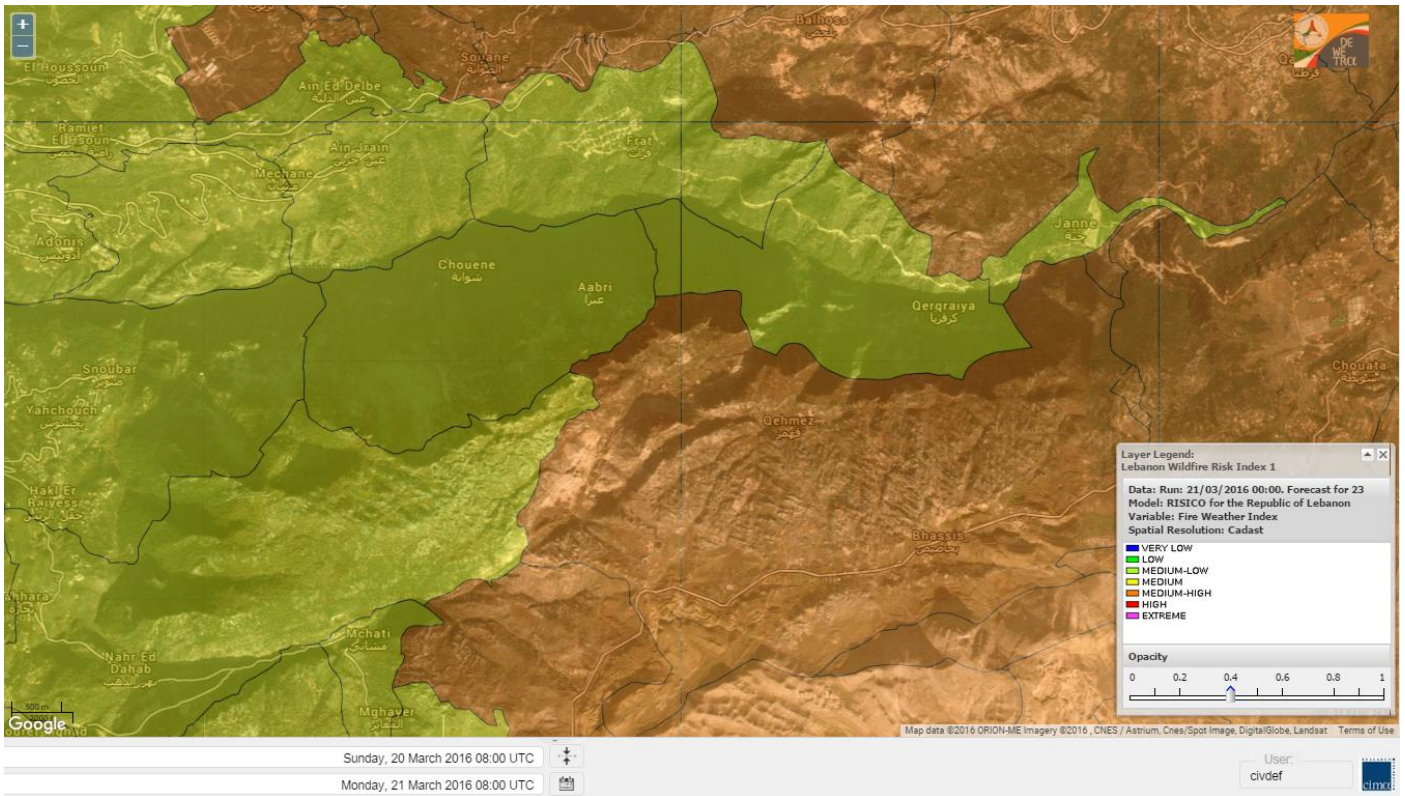


# Jabal Moussa Reserve Forecast for 22 March 2016





# Jabal Moussa Reserve Forecast for 23 March 2016



## Nord

### Koura

Municipality	21/0 3	22/0 3	23/0 3	Municipality	21/0 3	22/0 3	23/0 3	Municipality	21/0 3	22/0 3	23/0 3
Aaba	M	M	MH	Afsaddiq	M	M	MH	Ain Ekriane	M	M	MH
Amioun	M	M	MH	Anfeh	M	M	M	Badbhoun	M	M	MH
Barghoun	M	M	M	Barsa	M	M	MH	Batroumine	M	M	MH
Bdebba	M	M	MH	Bechmizine	M	M	MH	Bednaye El-Koura	M	M	M
Bhabbouch El-Koura	M	M	MH	Bkeftine	M	M	MH	Bnehran	M	M	MH
Bqaiia El-Koura	M	M	MH	Bsarma	M	M	MH	Btaaboura	M	M	MH
Bterram	M	M	MH	Btouratij	M	M	MH	Bziza	M	M	MH
Dar Beehtar	M	M	MH	Dar Chmezzine	M	M	MH	Deddeh	M	M	MH
Deir El-Balamand	M	M	M	Fih	M	M	MH	Hraiche	M	M	M
Ijdaabrine	M	M	M	Kaftoun	M	M	MH	Kefraya El-Koura	M	M	M
Kfarakka	M	M	MH	Kfarhata	M	M	M	Kfarhazir	M	M	M
Kfarkahel	M	M	MH	Kfarsaroun	M	M	MH	Kosba	M	M	MH
Mejdel el-Koura	M	M	MH	Nakhle	M	M	MH	Qalhat	M	M	M
Ras Masqa	M	M	MH	Rechdibbine	M	M	MH	Zakroun	M	M	M
Zgharta El-Mtaouile	M	M	MH								

### Bcharre

Municipality	21/0 3	22/0 3	23/0 3	Municipality	21/0 3	22/0 3	23/0 3	Municipality	21/0 3	22/0 3	23/0 3
Aabdine	M	M	MH	Bane	L	M	MH	Barhelioun	M	M	MH
Bazouone	L	ML	MH	Becharre	L	M	MH	Beit Menzer	M	M	MH
Billa	M	M	MH	Blaouza	ML	M	MH	Bqaa Kafra	L	M	MH
Bqerqacha	L	M	MH	Breissat	M	M	MH	Dimane	M	M	MH
Hadath El Jobbeh	ML	M	M	Hadchit	L	ML	M	Hasroun	L	ML	M
Mazraat Aassaf	M	M	M	Mazraat Bani Saab	M	M	M	Mchaa El-Jobbeh	L	M	MH
Metrit	M	M	MH	Moghr El-Ahoual	M	M	MH	Ouadi Qannoubine	L	L	M
Qanat	ML	M	M	Qnayer	M	M	M	Tourza	M	M	MH

### Batroun

Municipality	21/0 3	22/0 3	23/0 3	Municipality	21/0 3	22/0 3	23/0 3	Municipality	21/0 3	22/0 3	23/0 3
Aabrine	M	M	M	Aalali	M	M	M	Aartiz	M	M	M
Abdelli	M	M	M	Ajdabra	M	M	M	Assia	M	M	M
Basbina	M	M	M	Batroun	M	M	M	Bcheleh	M	M	MH
Bechtoudar	M	M	MH	Beit Chlala	M	M	MH	Beit Kassab	M	M	M
Bijdarfil	M	M	M	Bqesmaya	M	M	MH	Chatine	ML	M	MH
Chebtein	M	M	M	Chekka	M	M	M	Daael	M	M	M
Dahr Abi Yaghi	M	M	M	Daraya El-Batroun	M	M	M	Deir Billa	M	M	M
Deir Kfifane	M	M	M	Deir Mar Youhanna EL	M	M	MH	Deir Mar Youssef Jra	M	M	M
Douma	M	M	MH	Douq	M	M	M	Eddeh El-Batroun	M	M	M
Ftahat El-Batroun	M	M	M	Ghouma	M	M	M	Hadtoun	M	M	M
Hamat	M	M	M	Harbouna	M	M	M	Hardine	M	M	M
Helta	M	M	M	Hery	M	M	M	Jebila	M	M	M
Jrabta El-Batroun	M	M	M	Jrane El-Batroun	M	M	M	Kfar Aabida	M	M	M
Kfar Halda	M	M	MH	Kfarb Shlaimane	M	M	M	Kfarhatna	M	M	M
Kfarhay	M	M	M	Kfarhelos	M	M	M	Kfifane	M	M	M



Kfour El Arabi	M	M	MH	Koubba	M	M	M	Kour	M	M	M
Mar Mama	M	M	M	Masrah	M	M	M	Mehmarch	M	M	MH
Mrah Chdid	M	M	M	Mrah El Ziyat	M	M	M	Mrah El-Hajj	M	M	M
Nahle El-Batroun	M	M	M	Niha El-Batroun	M	M	MH	Ouajh El-Hajjar	M	M	M
Ouata Houb	L	M	M	Qatnaaoun	M	M	M	Racha	M	M	M
Rachana	M	M	M	Rachkida	M	M	M	Ram El-Batroun	M	M	M
Ras Nahnach	M	M	M	Selaata	M	M	M	Sghar	M	M	M
Smar Jbayl	M	M	M	Sourat El-Batroun	M	M	M	Tannourine El-Faouqa	L	M	MH
Tannourine Et-Tahta	ML	M	M	Thoum	M	M	M	Toula El-Batroun	M	M	M
Zan	M	M	M								

## Zgharta

Municipality	21/0 3	22/0 3	23/0 3	Municipality	21/0 3	22/0 3	23/0 3	Municipality	21/0 3	22/0 3	23/0 3
Aachach	M	M	MH	Aalma	M	M	MH	Aarde	M	M	MH
Aintourine	M	M	MH	Arabet Qozhaya	M	M	M	Arde	M	M	MH
Arjis	M	M	MH	Asnoun	M	M	MH	Ayto	M	M	M
Basloukit	M	M	MH	Bchannine	M	M	MH	Besebeel	M	M	MH
Bhairret Toula	M	M	MH	Bnachee	M	M	MH	Boussit	M	M	MH
Danha	M	M	MH	Daraiya Zgharta	M	M	MH	Deir Jdeide	M	M	MH
Ehden	M	M	MH	Halan	M	M	MH	Hariq Zgharta	M	M	MH
Houakir	M	M	MH	Hraiqis	M	M	MH	laal	M	M	MH
Ijbaa	M	M	MH	Karm Saddeh	M	M	M	Kfarchakhna	M	M	MH
Kfardlaqous	M	M	MH	Kfarfou	M	M	MH	Kfarhata Zgharta	M	M	MH
Kfarhoura	M	M	MH	Kfarsghab	ML	M	MH	Kfaryachit	M	M	MH
Kfarzaina	M	M	MH	Khaldiye	M	M	MH	Mazraat Ajbeaa	M	M	MH
Mazraat Et-Teffah	M	M	M	Mazraat Jneid	M	M	MH	Mejdlaiya Zgharta	M	M	MH
Merh Kfarsghab	M	M	MH	Miryata	M	M	MH	Miziara	M	M	MH
Mzraat Kefraya	M	M	MH	Qorah Bach	M	M	MH	Rachiine	M	M	MH
Ras Kifa	M	M	MH	Sakhra	M	M	MH	Sebhel Zgharta	M	M	MH
Serhel	M	M	M	Tallet Zgharta	M	M	MH	Toula Zgharta	M	M	MH
Zgharta	M	M	MH								

## Minieh-Denniye

Municipality	21/0 3	22/0 3	23/0 3	Municipality	21/0 3	22/0 3	23/0 3	Municipality	21/0 3	22/0 3	23/0 3
Aasaymout	M	M	M	Aaymar	M	M	MH	Aazki	M	M	MH
Ain El-Tineh-Miniyeh	M	M	MH	Assoun	M	M	MH	Bakhaaoun	M	M	M
Bchennata	M	M	MH	Bechehhara	M	M	M	Beddawi	M	M	MH
Behouaita	M	M	MH	Beit El Foqss	M	M	MH	Beit Haouik	M	M	MH
Beit Zoud	M	M	MH	Bekaasafrine	L	M	MH	Borj El Yahoudiyeh	M	M	MH
Bqarsouna	M	M	MH	Btermaz	M	M	M	Debaael	M	M	M
Deir Ammar	M	M	MH	Deir Nbouh	M	M	MH	Haouaret-Miniyeh	M	M	MH
Haql el Azimeh	M	M	M	Harf El Siyad	M	M	M	Hazmiye-Miniyeh	M	M	M
Izal	M	M	MH	Jarjour	M	M	M	Jayroun	M	M	M
Kahf El-Malloul	M	M	MH	Karm El-Moher	M	M	MH	Kfar Binine	M	M	MH
Kfarchalane	M	M	MH	Kfarhabou	M	M	MH	Kharroub-Miniyeh	M	M	MH
Mazraat El-Kreme	M	M	M	Mazraat Ketrane	M	M	MH	Merkebt	M	M	MH
Minyeh	M	M	MH	Mrah El Sfirat	M	M	M	Mrah Sraj	M	M	M
Mrebbine	M	M	MH	Nabi Youcheaa	M	M	MH	Nemrine	M	M	MH

Qarhaiya	M	M	MH	Qarne	M	M	M	Qarsita	M	M	M
Qattineh-Miniyeh	M	M	M	Qemmamine	M	M	M	Qraine	M	M	M
Raouda-Aadoua	M	M	MH	Rihaniyet-Miniyeh	M	M	MH	Sfireh	M	M	M
Sir Ed-Danniyeh	M	M	MH	Tarane	M	M	M	Terbol-Miniyeh	M	M	MH
Zaghartagraine	M	M	MH	Zouq Bhannine	M	M	MH				

## Nabatiye

### Nabatiye

Municipality	21/0 3	22/0 3	23/0 3	Municipality	21/0 3	22/0 3	23/0 3	Municipality	21/0 3	22/0 3	23/0 3
Aabba	M	M	MH	Aazzi	M	M	MH	Adchit El-Chqif	M	M	MH
Ain Bou Swar	L	ML	MH	Ain Kana	M	M	MH	Ali El-TaHER	M	M	MH
Ansar	M	M	MH	Arab Salim	ML	M	MH	Arnoun	M	M	M
Bfaroue	M	M	MH	Breyqaah	M	M	MH	Charqiyeh	M	M	MH
Choukine	M	ML	M	Deir El Zahrani	M	M	MH	Doueir El-Nabatiyeh	M	M	MH
Habbouch El-Nabatiye	M	M	MH	Hamra El-Nabatiyeh	M	ML	M	Harouf El-Nabatiyeh	M	M	M
Hmaile	M	M	MH	Houmin El Faouqa	M	M	MH	Houmin El Tahta	M	M	MH
Jarjough	ML	ML	MH	Jbaah El-Nabatiyeh	L	ML	MH	Jebchit	M	M	MH
Kfar Djal El-Nabatiy	M	M	MH	Kfar Remmane	ML	M	MH	Kfar Sir	M	M	MH
Kfar Tebnit	M	M	MH	Kfarfila	M	M	MH	Kfour El-Nabatieh	M	M	MH
Mayfadoun	M	ML	M	Mazraat Bsaffour	M	M	MH	Mazraat Chalbaal	M	M	MH
Mazraat Dmoul	M	M	MH	Mazraat El Khreibeh	M	M	MH	Mazraat El-Bayad El-	M	M	MH
Mazraat Kfarjaouz	M	ML	M	Mazraat Qalaat Meiss	M	M	MH	Nabatiyeh El-Fawka	M	ML	M
Nabatiyeh Et-Tahta	M	ML	M	Namiriyyeh	M	M	MH	Qaaqaaiyet El Jisr	M	M	MH
Qossaibeh El-Nabatiy	M	M	MH	Roumine	M	M	MH	Sarba El-Nabatieh	M	M	MH
Sir El-Gharbiyeh	M	M	MH	Toul	M	ML	M	Yehmor El-Nabatiyeh	M	M	M
Zaoutar El Charkiyeh	M	M	M	Zaoutar El-Gharbiyeh	M	ML	M	Zebdine El-Nabatiyeh	M	ML	M
Zefta	M	M	MH								

### Hasbaiya

Municipality	21/0 3	22/0 3	23/0 3	Municipality	21/0 3	22/0 3	23/0 3	Municipality	21/0 3	22/0 3	23/0 3
Aain Jarfa	L	ML	M	Abou Qamha	ML	M	M	Ain Qania	L	ML	M
Bourghos	ML	ML	MH	Chebaa	L	M	MH	Chouaya Hasbaya	L	ML	MH
Dellafeh	ML	ML	MH	Fardiss Hasbaiya	ML	M	MH	Hasbaya	ML	ML	MH
Hbariyeh	L	ML	M	Kaoukaba Hasbaiya	ML	M	MH	Kfar Chouba	L	ML	M
Kfar Hamam	L	M	M	Kfeir El-Zait	L	ML	M	Khalwat Hasbaya	L	L	M
Khreibet Hasbaiya	M	M	MH	Majidiyeh Hasbaiya	ML	M	MH	Marj Ez-Zhour (Haouc	ML	ML	M
Meri	M	M	MH	Mimass	ML	ML	MH	Rachaiya El-Fokhar	ML	M	M
Salaiyeb	M	M	MH								

### Marjayoun

Municipality	21/0 3	22/0 3	23/0 3	Municipality	21/0 3	22/0 3	23/0 3	Municipality	21/0 3	22/0 3	23/0 3
Aalmane Marjaayoun	M	M	M	Aamra	M	M	MH	Adayseh Marjaayoun	M	M	M
Adchit El-Koussair	M	M	M	Ain Arab Marjaayoun	M	M	MH	Bani Haiyann	M	ML	M
Blatt Marjaayoun	M	M	MH	Blida	M	M	M	Borj El-Moulouk	M	M	M
Boueyda Marjaayoun	M	M	MH	Deir Mimass	M	M	M	Deir Siriane	M	M	M
Dibbine	M	M	MH	Ebel El Saqi	M	M	MH	Houla	M	M	M
Houra	M	M	M	Kfar Kila	M	M	M	Khiam Marjaayoun	M	M	MH



Klayaa	M	M	M	Majdel Selem	M	ML	M	Marjaayoun	M	M	MH
Markaba	M	M	M	Mays El-Jabal	M	M	M	Mazraat Doumiat	M	M	MH
Mazraat Sarada	M	M	MH	Mhaibib	M	M	M	Qabrikha	M	ML	M
Qantara	M	M	M	Rab El-Thalathine	M	M	M	Saouaneh Marjayoun	M	ML	M
Talloussa	ML	ML	M	Taybeh Matjaayoun	M	M	M	Touline	M	ML	M

## Bent Jbail

Municipality	21/0 3	22/0 3	23/0 3	Municipality	21/0 3	22/0 3	23/0 3	Municipality	21/0 3	22/0 3	23/0 3
Ain-Ebel	M	ML	M	Aitaroun	M	M	M	Aynata Bint Jbeil	M	M	M
Ayta El-Chaeb	M	ML	M	Ayta El-Jabal	M	ML	M	Beit Lif	ML	ML	M
Beit Yahoun	M	ML	M	Bint Jbeil	M	M	M	Borj Qalaway	M	ML	MH
Braachit	M	ML	M	Chakra	M	ML	M	Debel	M	ML	M
Deir Antar	M	ML	M	Froun	M	M	MH	Ghandouriyeh Bint Jb	M	M	MH
Hanine	M	ML	M	Hariss	ML	ML	M	Hdatha	ML	ML	M
Jmeyjme	M	ML	M	Kafra Bint Jbeil	M	M	M	Kfar Dounine	M	ML	M
Khirbet Selm	M	ML	M	Kounine	M	M	M	Maroun El Ras	M	M	M
Qalaway	M	ML	MH	Qaouzah	M	ML	M	Qatmoun	M	ML	MH
Ramya Bint Jbeil	M	ML	M	Rchaf	M	ML	M	Rmeich	M	ML	M
Safad Al Battikh	M	ML	M	Salhaneh	M	ML	M	Serbine	M	M	M
Sultanieh Bint Jbeil	ML	ML	M	Tibnine	M	ML	M	Tiri	M	ML	M
Yaroun	M	ML	M	Yater	M	ML	M				

## Mont Liban

### Jbail

Municipality	21/0 3	22/0 3	23/0 3	Municipality	21/0 3	22/0 3	23/0 3	Municipality	21/0 3	22/0 3	23/0 3
Aabeydat	M	M	M	Aalita	M	M	M	Aamchit	M	M	MH
Aarab El-Lahib	L	M	MH	Aarasta	L	ML	MH	Adonis Jbeil	ML	M	M
Afqa Jbeil	L	ML	M	Ain El Delbeh Jbeil	ML	M	M	Ain El-Ghouayba	L	ML	MH
Ain Jrain	L	M	M	Ain Kfah	M	M	M	Almat El Chemaliyat	ML	M	MH
Almat El-Jenoubiya	L	M	MH	Aqoura	ML	M	MH	Bayzoun	ML	M	MH
Bchille Jbeil	M	M	M	Bechtida	M	M	M	Behdaydat	M	M	M
Beit Habbaq	M	M	M	Bejjeh	M	M	M	Bekhaaz	M	M	M
Berbara Jbeil	M	M	M	Bintael	M	M	M	Birket Hjoula	M	M	M
Blatt Jbeil	M	M	M	Boulhos	L	M	MH	Breyj Jbeil	M	M	M
Chamat	M	M	M	Chikhane	M	M	M	Chmout	M	M	M
Eddeh Jbeil	M	M	M	Ehmej	L	M	MH	Fatre	M	M	M
Ferhet	M	M	MH	Fghal	M	M	M	Frat	L	M	M
Ghabat	L	M	MH	Ghalboun	M	M	M	Gharzouz	M	M	M
Ghofrine	M	M	M	Habil	M	M	M	Halate	M	M	M
Haqel	M	M	M	Hbaline	M	M	M	Hboub	M	M	M
Hdeine	L	M	MH	Hema Er-Rehban	ML	M	MH	Hema Mar Maroun Aann	L	M	MH
Hjoula	ML	M	M	Hosrayel	M	M	M	Hsarat	M	M	M
Hsoun	M	M	M	Jaj	M	M	MH	Janne	L	L	M
Jbeil	M	M	MH	Jeddeyel Jbeil	M	M	M	Jlisse	M	M	M
Jouret El-Qattine	M	M	M	Kfar Baal Annaya	ML	M	M	Kfar Kidde	M	M	M
Kfar Kouas	M	M	M	Kfar Mashoun	M	M	MH	Kfoun	M	M	M

Kharbe Jbeil	M	M	M	Laqlouq	L	M	MH	Lassa	L	ML	MH
Lehfed	M	M	M	Maad	M	M	M	Mar Sarkis	L	M	MH
Mastita	M	M	M	Mayfouq	M	M	M	Mazraat El Siyad	L	M	MH
Mazraat El-Maaden	ML	M	M	Mechane	L	M	M	Mechmech Jbeil	ML	M	M
Mehrin	M	M	M	Mejdel El-Akoura	L	M	MH	Mghayreh Jbeil	L	M	MH
Mounsef	M	M	M	Nahr Ibrahim	M	M	MH	Qahmez	L	ML	MH
Qartaba	L	M	MH	Qartaboun	M	M	MH	Qattara Jbeil	M	M	M
Qorqraya	L	ML	M	Ramout	M	M	M	Ras Osta	M	M	M
Rihane Jbeil	M	M	M	Sakiet El-Khayt	M	M	M	Saqi Richmaya	M	M	M
Sebrine	M	M	M	Seraita	L	M	MH	Souane Jbeil	ML	M	MH
Tadmor	L	M	MH	Tartej	M	M	MH	Torzaiya	ML	M	M
Yanouh Jbeil	L	M	MH	Zibidine Jbeil	M	M	M				

## El Metn

Municipality	21/0 3	22/0 3	23/0 3	Municipality	21/0 3	22/0 3	23/0 3	Municipality	21/0 3	22/0 3	23/0 3
Aain El-Qabu	L	L	M	Aain El-Qach	ML	M	M	Aain El-Teffaha	ML	M	M
Aain el-Safsaf El-M	L	M	M	Abou Mizane	ML	M	M	Ain Aar	M	M	M
Ain Alaq	M	M	M	Ain El-Kharroube	M	M	M	Ain El-Sendianeh	ML	M	M
Ain El-Zeitoune	L	L	M	Ain Saadeh	M	M	M	Aintoura El-Matn	L	M	MH
Amaret Chalhoub	M	M	MH	Antelias	M	M	MH	Atchaneh	M	M	M
Ayroun	ML	M	M	Baabdat	L	M	M	Baouchariyeh	M	M	MH
Baskinta	L	ML	MH	Beit Chabab	M	M	M	Beit El-Charar	M	M	MH
Beit El-Kekko	M	M	MH	Beit Mery	ML	M	M	Bhersaf	ML	M	M
Bikfaya	ML	M	M	Biyakout	M	M	MH	Bnabil	L	ML	M
Bourj Hammoud	M	M	MH	Bqennaya	M	M	M	Broummana El-Matn	M	M	M
Bsalim	M	M	M	Bsifrine	L	M	M	Bteghrine	L	L	M
Chaouiye	M	M	M	Chouaya El-Matn	ML	M	M	Choueir	ML	M	M
Chrine	L	ML	M	Dahr El Sawan El-Mat	ML	M	M	Daychouniyeh	M	M	MH
Dbayeh	M	M	MH	Deir Chamra	ML	ML	M	Deir Mar Abda el Mch	M	M	M
Deir Mar Roukouz	M	M	MH	Deir Tamiche	M	M	M	Dik El-Mehdi	M	M	M
Dikwaneh	M	M	MH	Douar El-Matn	ML	M	M	Fanar	M	M	M
Fraike	M	M	M	Haret El-Ballaneh	M	M	M	Hbous	M	M	M
Himlaya	M	M	M	Jal El Did	M	M	MH	Jdeideh El-Metn	M	M	MH
Jouar El-Matn	L	ML	M	Jouret El-Ballout	M	M	M	Kaaqour	L	M	M
Kfar Aaqab	L	L	M	Kfertay El-Matn	L	ML	MH	Khenchara	L	ML	M
Khillet El-Mtain	L	M	M	Konnabat Broummana	M	M	M	Konnabat Salima	L	M	M
Machraah El-Matn	L	ML	MH	Majdel Tarchich	ML	M	MH	Majzoub	M	M	MH
Mansouriyeh El-Metn	M	M	MH	Mar Boutros Karm Et-	ML	M	M	Mar Chaya et Mzekke	M	M	M
Mar Moussa Ed-Douar	L	M	M	Marjaba	L	ML	M	Masqa	ML	M	M
Mayasse	M	M	M	Mazraat Deir Aoukar	M	M	M	Mazraat El-Hadirat	M	M	M
Mazraat Yachouh	M	M	MH	Mchikha	L	ML	M	Menqlet Mezher	M	M	M
Mhaydseh Matn	ML	M	M	Mkalles	M	M	MH	Mrouj	L	M	MH
Mtain	L	M	MH	Mtayleb	M	M	M	Nabay	M	M	M
Naccache	M	M	M	Ouadi Chahine	ML	M	M	Ouadi El-Karm El-Mat	L	L	M
Ouata El-Mrouj	L	ML	M	Ouyoun El-Matn	ML	M	M	Qornet Chehwan	M	M	M
Qornet El-Hamra	M	M	M	Roumieh	M	M	M	Sfeilet Bikfaya	M	M	M
Sinn El-Fil	M	M	MH	Zabbougha	L	ML	M	Zalqa	M	M	MH



Zarououn	L	M	M	Zekrite	M	M	M	Zighrine El-Matn	ML	M	M
Zouk El-Khrab	M	M	MH								

## Chouf

Municipality	21/0 3	22/0 3	23/0 3	Municipality	21/0 3	22/0 3	23/0 3	Municipality	21/0 3	22/0 3	23/0 3
Aalmane El-Chouf	M	M	MH	Aammq El-Chouf	L	ML	M	Ain Ouzein	L	L	M
Ain Qani	L	ML	M	Ain Zhalta	L	M	M	Ainbal	ML	M	M
Amatour	L	ML	M	Anout	M	M	M	Atrine	ML	ML	M
Baadarane	L	ML	M	Baaqline	ML	M	M	Baasir	M	M	MH
Barja	M	M	MH	Barouk	L	ML	M	Bater	L	ML	M
Batloun	L	ML	MH	Bayqoun	ML	M	MH	Bchetfine	L	M	M
Beiteddine	L	ML	M	Benouati Ech-Chouf	ML	M	M	Berjein	M	M	M
Bireh et Mtalleh	L	M	MH	Biret El-Chouf	ML	M	MH	Bkechtine Ouel Mchei	L	M	M
Bkifa El-Chouf	M	M	M	Botme	L	L	M	Bqaiaa Ech-Chouf	ML	M	M
Bsaba El-Chouf	ML	M	MH	Chammis El-Chouf	M	M	MH	Chehim	M	M	M
Chemaarine	ML	M	M	Chourit	L	ML	M	Daher El-Chouf	M	M	M
Dalhoun	M	M	M	Damour	M	M	MH	Daraya El-Chouf	ML	M	M
Deir El-Moukhalles	M	M	M	Deir Baba	ML	M	M	Deir Dourit	ML	ML	M
Deir El-Qamar	ML	M	M	Deir Kouche	L	M	M	Dibbieh	ML	M	M
Dmit	ML	M	M	Fouara Jaafar	L	M	M	Fraidis El-Chouf	L	M	MH
Ghabet Jaafar	ML	M	M	Gharife	L	M	M	Haret Jandal	L	ML	M
Hasrout	ML	M	MH	Jadra	M	M	MH	Jahlieh	ML	M	M
Jbeih El-Chouf	L	ML	MH	Jdeidet El-Chouf	L	ML	M	Jiyeh	M	M	MH
Jleilyeh	ML	M	MH	Jmailiyeh	M	M	MH	Joun	M	M	M
Kahlounie El-Chouf	ML	M	MH	Ketermaya	M	M	MH	Kfar Faqoud	L	M	M
Kfar Hamal	ML	M	MH	Kfar Him	ML	M	M	Kfar Katra	L	ML	M
Kfar Niss	L	M	MH	Kfar hay	ML	M	M	Kfarnabrakh	L	M	MH
Khirbet Bisri	L	ML	M	Knayse El-Chouf	L	M	M	Maaniyeh	M	M	MH
Maasser Beiteddine	L	ML	M	Maasser El-Chouf	L	ML	M	Majdalouna	M	M	M
Majdel El-Meouch	ML	M	MH	Mazboud	M	M	MH	Mazmoura	M	M	MH
Mazraat El Chouf	ML	ML	M	Mazraat El Daher	ML	M	M	Mazraat El-Douair	L	L	M
Mechref	M	M	M	Mghairie	M	M	MH	Mghayrie El-Chouf	ML	M	M
Moukhtara	L	ML	M	Mrusti	L	ML	MH	Mtolle	ML	M	M
Naameh	M	M	MH	Niha El-Chouf	L	ML	MH	Ouadi Abou Youssef	L	M	M
Ouadi Ed-Deir	ML	M	M	Ouadi El-Sit	ML	M	MH	Ouadi bnehlay	L	M	M
Qraibeh	L	ML	MH	Qreiaa	ML	M	M	Rmayle El-Chouf	M	M	MH
Semqaniyeh	ML	M	MH	Sibline	M	M	MH	Sirjbeil	ML	M	M
Warhanieh	L	M	MH	Werdaniyeh	M	M	MH	Zaarourieh	M	M	M

## Baabda

Municipality	21/0 3	22/0 3	23/0 3	Municipality	21/0 3	22/0 3	23/0 3	Municipality	21/0 3	22/0 3	23/0 3
Abadiyeh	ML	M	M	Ain Mouaffaq	ML	M	M	Araiya	ML	M	M
Arbaniyeh	L	ML	M	Arsoun	L	M	M	Baabda	M	M	MH
Baalchmey	ML	M	M	Bmaryam	L	ML	M	Bourj El-Brajneh	M	M	MH
Boutchay	M	M	M	Bsaba Baabda	M	M	MH	Btekhney	L	M	M
Btibyat	L	M	M	Bzbeddine	L	ML	M	Chbeniyeh	L	M	M
Chiyah	M	M	MH	Chmeisset Baabda	L	ML	M	Chouit	ML	M	M
Deir El-harf	L	M	M	Deir Khouna	L	M	M	Dlaybeh	L	M	M

Falougha	ML	M	MH	Furn El-Chebbak	M	M	MH	Hadath Beyrouth	M	M	MH
Halaliyeh Baabda	ML	M	M	Hammana	ML	M	MH	Haret El Sett	ML	M	M
Haret Hamze	L	M	M	Haret Hreik	M	M	MH	Hasbaya El-Metn	L	M	M
Jouar El-Hoz	L	L	M	Jouret Arsoun	L	M	M	Kfar Chima	M	M	MH
Kfar Selouane	L	ML	M	Khalouat Baabda	L	M	MH	Kneisset Baabda	L	M	M
Laylakeh	M	M	MH	Louayzeh Baabda	M	M	M	Merdache	M	M	M
Mzairaa Baabda	L	M	M	Ouadi Chahrour El Ol	ML	M	M	Ouadi Chahrour El So	ML	M	M
Qalaa Baabda	L	M	M	Qhraybe Baabda	L	ML	M	Qobbayaa	L	M	M
Qornayel	L	ML	M	Qortada	ML	M	M	Qrayeh Baabda	L	M	M
Qsaibeh Baabda	ML	M	M	Qtale Baabda	L	ML	M	Ras El Metn	ML	M	M
Ras El-Haref	L	M	M	Rouayset El-Ballout	L	M	M	Salima Baabda	L	M	M
Tahouitat El Ghadir	M	M	MH	Tarchich	L	M	MH	Zandouqa	ML	M	M

## Aley

Municipality	21/0 3	22/0 3	23/0 3	Municipality	21/0 3	22/0 3	23/0 3	Municipality	21/0 3	22/0 3	23/0 3
Abey	ML	M	M	Aghmid	L	M	M	Ain Dara	ML	M	MH
Ain Drafil	ML	M	M	Ain El Halazoun	ML	M	MH	Ain El-Rmmaneh	L	M	M
Ain Jedideh	ML	M	MH	Ain Ksour	ML	M	M	Ain Onoub	M	M	M
Ain Traz	L	M	MH	Ainab	ML	M	M	Aley	ML	M	MH
Aramoun	M	M	M	Aytat	M	M	M	Azouniyeh	L	M	M
Baawerta	M	M	M	Badghan Oua Wadi Bad	L	M	MH	Bassatine	ML	M	M
Bayssour	M	M	M	Bchamoun	M	M	M	Bdadoun	ML	M	M
Behouara	ML	M	M	Bennay	M	M	MH	Bhamdoun El-Dayaa	ML	M	MH
Bhamdoun El-Mhatta	ML	M	MH	Bkhechtey	ML	M	MH	Bleibel	ML	M	M
Bmakine	M	M	MH	Bmehray	L	M	M	Bouzrid	L	M	M
Bserrine	ML	M	MH	Bsous	L	M	M	Btalloun	ML	M	MH
Btater	ML	M	MH	Chanay	ML	M	MH	Charoun	L	M	MH
Chartoun	L	M	M	Chemlane	M	M	M	Choueifat El-Aamrous	M	M	MH
Choueifat El-Oumara	M	M	MH	Choueifat El-Quoubbe	M	M	MH	Dakkoun	ML	M	M
Deir Qoubel	M	M	M	Dfoun	M	M	MH	Douair El Remmaneh	L	M	M
Ghaboun	ML	M	M	Habramoun	L	ML	M	Homs Oua Hama	ML	M	M
Houmal	ML	M	M	Jisr El Qadi	ML	M	M	Kehaleh	L	M	M
Keyfoun	M	M	MH	Kfar Aamey	ML	M	M	Kommatyeh	M	M	M
Maasrati	ML	M	M	Majdel Baana	L	M	MH	Mansourieh et Ain El	ML	M	MH
Mazraat El-Nahr	ML	M	M	Mchakhte	L	M	M	Mecherfeh	L	M	M
Mejdaya	M	M	M	Mrayjat	L	M	MH	Ramliyah	L	M	M
Rechmaya	ML	M	MH	Rejmeh	ML	M	M	Remhala	ML	M	M
Rouayset El Neemane	L	M	M	Saoufar	L	M	MH	Selfaya	L	M	M
Sirhmoul	M	M	M	Souq El Ghareb	M	M	M	Taazanieh	ML	M	MH

## Kesrouane

Municipality	21/0 3	22/0 3	23/0 3	Municipality	21/0 3	22/0 3	23/0 3	Municipality	21/0 3	22/0 3	23/0 3
Achkout	M	M	M	Adma Oua Dafneh	M	M	M	Ain Ed-Delbe Kesroua	L	ML	M
Ain El-Rihane	M	M	M	Aintoura Kesrouane	M	M	M	Ajaltoun	M	M	M
Akaybeh Kesrouane	M	M	MH	Aramoun Kesrouane	M	M	M	Azra ouel Ozor	M	M	M
Ballouneh	M	M	M	Batha	M	M	M	Bekaatat Achkout	ML	M	M
Bekaatat Kanaan	L	ML	M	Bizhel	M	M	M	Bouar	M	M	M
Bqaatouta	L	M	MH	Bqaq Ed-Dine	M	M	M	Bzommar	M	M	M



Chahtoul	M	M	M	Chnaniir	M	M	M	Chouan	L	M	M
Daraya Kesrouane	M	M	M	Darououn	M	M	M	Deir Baqlouch	M	M	M
Dlebta	M	M	M	Eghbeh	M	M	M	Faraya	L	M	MH
Fatka	M	M	M	Feytroun	L	ML	M	Ghazir	M	M	M
Ghbaleh Kesrouane	M	M	M	Ghedrass	M	M	M	Ghosta	M	M	M
Ghynéh	M	M	M	Harharaya w Kattine	M	M	M	Harissa Kesrouane	M	M	M
Hayata	M	M	M	Hosein	M	M	M	Hrajel	L	M	MH
Jdeideh Ghazir	M	M	M	Jeita	M	M	M	Jounieh Ghadir	M	M	M
Jounieh Haret Sakhr	M	M	MH	Jounieh Salel Alma	M	M	M	Jounieh Sarba	M	M	MH
Jouret Bedrane	M	M	M	Jouret Mhad	L	M	M	Jouret Termos	M	M	M
Kfar Debiane	L	ML	MH	Kfar Tay Kesrouane	L	L	M	Kfar Yassine	M	M	MH
Kfour Kesrouane	M	M	M	Kharayeb Nahr Ibrahi	M	M	M	Klayaat Kesrouane	M	M	M
Maarab	M	M	M	Maaysra Kesrouane	M	M	M	Mayrouba	L	M	MH
Mazraat Er-Ras	M	M	M	Mazraat Mrah El-Mir	M	M	M	Mchaa El Ftouh	L	M	MH
Mchaa Faraya	L	M	MH	Mchaa Kfar Dibiane	L	M	MH	Mghaer	L	ML	M
Mradiyah	M	M	M	Nahr Ed-Dahab	L	M	M	Nammoura Kesrouane	M	M	M
Ouata El Jaouz	L	M	M	Ouata Sillam	M	M	MH	Raachine	ML	M	M
Rayfoun	M	M	M	Safra Kesrouane	M	M	M	Shayle Kesrouane	M	M	M
Tabarja	M	M	M	Yahchouch	L	M	M	Zaaytreh	M	M	M
Zeytoun	M	M	M	Zouk Mikael	M	M	MH	Zouk Mosbeh	M	M	MH

## Baalbek\_Hermel

### Baalbek

Municipality	21/03	22/03	23/03	Municipality	21/03	22/03	23/03	Municipality	21/03	22/03	23/03
Aadous	M	M	MH	Aamchki	M	M	M	Aarsal	M	M	M
Ain Baalbek	M	M	M	Ain Bourday	M	M	MH	Ain El-Benye	M	M	MH
Ain El-Jaouz Baalbek	M	M	M	Ain El-Siya Chadoura	M	M	M	Al Khodr Baalbek	M	M	MH
Al Nabi Chit	M	M	MH	Aynata Baalbek	M	M	MH	Baalbek	M	M	MH
Bachwat	M	M	MH	Barqa	M	M	MH	Bednayel Baalbak	M	M	MH
Beit Chama	M	M	MH	Bijjaje	MH	MH	MH	Bouday	M	M	MH
Brital	M	M	MH	Btadi	M	M	MH	Chaat	M	M	MH
Chaibe	M	M	MH	Chlifa	M	M	MH	Chmestar	M	M	MH
Dar El-Oussa	M	M	MH	Deir El-Ahmar	M	M	MH	Deir Mar Maroun Baal	M	M	H
Douris	M	M	MH	Fakiha	M	M	H	Hadath Baalbek	M	M	MH
Ham	M	M	MH	Haour Taala	M	M	MH	Hizzine	M	M	MH
Hlebta	M	M	MH	Hosh Barada	M	M	MH	Hosh El Dahab	M	M	MH
Hosh El Snid	M	M	MH	Hosh El-Nabi	M	M	MH	Hosh El-Rafiq	M	M	MH
Hosh Tal Safiya	M	M	MH	Hrebta	M	M	MH	laat	M	M	MH
Jebaa	M	M	MH	Jenta	M	M	MH	Kfar Dabach	M	M	MH
Kfar Dane	M	M	MH	Khraibeh El-Hermel	M	M	MH	Khreibet Baalbek	M	M	MH
Kneisset Baalbek	M	M	MH	Labueh	M	M	MH	Maarboun	M	M	MH
Majdaloun	M	M	MH	Maqneh	M	M	MH	Mazraat Beit Mcheik	M	M	H
Misraya	M	M	MH	Moqraq	M	M	M	Nabha El-Damdoum	M	M	MH
Nabi Chbay	M	M	MH	Nabi Osman	M	M	MH	Nahleh baalbek	M	M	M
Ouadi El-Oss	M	M	MH	Qaa Baayoun	M	M	H	Qaa Jouar Maqiye	M	M	H
Qaa Ouadi El-Khanzir	M	M	H	Qah Baalbek	M	M	H	Qarha Baalbek	M	M	MH

Qsarnaba	M	M	MH	Ram Baalbek	M	M	MH	Ras Baalbek El Sahl	M	M	H
Ras Baalbek El-Charq	M	M	H	Riha	M	M	MH	Saaide	M	M	MH
Sboubba	M	M	MH	Seriine El-Tahta	M	M	MH	Slouqi	ML	M	MH
Taiba Baalbek	M	M	MH	Talia	M	M	MH	Taraiya	M	M	MH
Temnin El Fawqa	M	M	MH	Temnin El-Tahta	M	M	MH	Tfail	M	M	M
Yahfoufa	M	M	MH	Yammouneh	M	M	MH	Younine	M	M	M
Zboud	M	M	MH								

## Hermel

Municipality	21/0 3	22/0 3	23/0 3	Municipality	21/0 3	22/0 3	23/0 3	Municipality	21/0 3	22/0 3	23/0 3
Charbine El-Hermel	M	M	H	Hermel Jbab	M	M	H	Hermel	M	M	H
Maaysra El-Hermel	M	M	H	Michaa Mrajhine	M	M	MH	Ouadi Faara	M	M	MH
Ras Baalbek - Ouadi	M	M	H	Ras Baalbek El Gharb	M	M	H	Zighrine	M	M	H

## Akkar

### Akkar

Municipality	21/0 3	22/0 3	23/0 3	Municipality	21/0 3	22/0 3	23/0 3	Municipality	21/0 3	22/0 3	23/0 3
Aain Tinta	M	M	MH	Aaiyat	M	M	MH	Aakkar El-Aatiqa	M	M	MH
Aamar Akkar	M	M	MH	Aamar El Baykat	M	M	MH	Aamayer	M	M	H
Aamriyet Akkar	M	M	MH	Aandqet	M	M	MH	Aarmeh	M	M	MH
Aarqa	M	M	MH	Aawaynat	M	M	H	Aayoun Akkar	M	M	MH
Abboudiye	M	M	MH	Ain El-Zeit	M	M	MH	Ain Yaaqoub	M	M	MH
Akroum	M	M	H	Aridet Cheikh Zennad	M	M	MH	Baldeh w Mazraat Bal	M	M	MH
Barcha	M	M	MH	Bardeh	M	M	H	Bebnine	M	M	MH
Beino	M	M	MH	Beit Ayoub	M	M	MH	Beit El-Haouch	M	M	MH
Beit Mellat	M	M	MH	Beit Younes	M	M	M	Berbara Akkar	M	M	MH
Berqayel	M	M	MH	Bezbina	M	M	M	Bireh Akkar	M	M	MH
Borj	M	M	MH	Bqerezla	M	M	MH	Bzal	M	M	MH
Chane	M	M	MH	Chaqdouf	M	M	MH	Charbila	M	M	MH
Cheikh Mohammad	M	M	MH	Cheikh Taba Es-Sahl	M	M	MH	Cheikh Taba	M	M	MH
Cheikh Zennad	M	M	MH	Cheikhlar	M	M	H	Chir Hmairine	M	M	MH
Daghle	M	M	MH	Dahr Laissine	M	M	MH	Darine	M	M	MH
Dawra	M	M	MH	Dawsa w Baghdadi	M	M	MH	Dayret Nahr El-Kabir	M	M	H
Deir Dalloum	M	M	MH	Deir Jennine	M	M	MH	Denbou	M	M	MH
Dibbabiyyeh	M	M	MH	Douair Aadwiyeh	M	M	MH	Fassikine	M	M	MH
Fnaydek	M	M	MH	Fraydes Akkar	M	M	MH	Ghazayle	M	M	MH
Habchit	M	M	MH	Hakour	M	M	MH	Halba	M	M	MH
Haouchab	M	M	MH	Hayssat	M	M	MH	Haytla	M	M	MH
Hayzouq	M	M	MH	Hedd	M	M	MH	Hmaira Akkar	M	M	MH
Hmaiss Akkar	M	M	MH	Hnaider	M	M	H	Hokr Ed-Dahri	M	M	MH
Hokr Etti	M	M	MH	Hokr Jouret Srar	M	M	MH	Houaich	M	M	MH
Hrar	M	M	MH	Idbil	M	M	MH	Ilal	M	M	MH
Janine	M	M	MH	Jdeidet El-Joumeh	M	M	MH	Jdeidet El-Kaiteh	M	M	MH
Jebayel	M	M	MH	Kafr	M	M	M	Kafr	M	M	MH
Karm Asfour	M	M	MH	Kfar Melki Akkar	M	M	MH	Kfar Noun	M	M	MH
Kfarharra	M	M	MH	Khalsa	M	M	H	Kharnoubet Akkar	M	M	MH

Khirbet Daoud Aakkar	M	M	MH	Khirbet El Remmane	M	M	H	Khirbet Shar	M	M	MH
Khoreybet El-Jindi	M	M	MH	Khreibet Aakkar	M	M	MH	Kneisset Aakkar	M	M	MH
Kneisset Hnaider	M	M	H	Knisse	M	M	MH	Kroum El-Aarab	M	M	MH
Kwachra	M	M	MH	Kweykhat	M	M	MH	Machta Hammoud	M	M	H
Majdala	M	M	MH	Majdel Akkar	M	M	MH	Mar Touma	M	M	MH
Marlaya Melhem	M	M	MH	Mashha	M	M	MH	Massoudiye	M	M	MH
Mazraat Beit Ghattas	M	M	MH	Mazraat En-Nahriye	M	M	H	Mechmech	M	M	MH
Memneh	M	M	M	Mhammara	M	M	MH	Mighraq Aakkar	M	M	MH
Minyara	M	M	MH	Moqayteh	M	M	MH	Mounjez	M	M	MH
Msalla	M	M	MH	Mzeihmeh	M	M	MH	Nfaiseh	M	M	MH
Noura Et-Tahta	M	M	MH	Ouadi El-Haour	M	M	MH	Ouadi El-Jamous	M	M	MH
Ouyoun El-Ghizlane	M	M	M	Qaabarine	M	M	MH	Qabaait	M	M	MH
Qachlaq	M	M	MH	Qantara Aakkar	M	M	MH	Qarha Aakkar	M	M	H
Qarqaf	M	M	MH	Qboula	M	M	MH	Qleiaat Aakkar	M	M	MH
Qloud El-Baqie	M	M	MH	Qobaiyat Aakkar	M	M	MH	Qobbat Chamrat	M	M	MH
Qorayat	M	M	MH	Qornet Aakkar	M	M	MH	Qsair Aakkar	M	M	MH
Rahbe	M	M	MH	Rihaniyet Aakkar	M	M	MH	Rmah	M	M	H
Rmoul	M	M	MH	Saadine	M	M	MH	Sadaqa	M	M	MH
Saidnaya	M	M	MH	Sammouniye	M	M	MH	Sayssouq	M	M	MH
Semmaqiye	M	M	MH	Semmaqli	M	M	MH	Sfinet El-Dreib	M	M	MH
Sfinet El-Qaitaa	M	M	MH	Sindyanet Zeidane	M	M	MH	Souaisset Aakkar	M	M	MH
Srar	M	M	MH	Tal Abbas El Gharby	M	M	MH	Tal Abbas El-Charqy	M	M	MH
Tal Biret	M	M	MH	Tal Hmayra	M	M	MH	Tal Maayan Tal Kiri	M	M	MH
Tal Sibel	M	M	MH	Tallet Chattaha	M	M	MH	Tikrit	M	M	MH
Tleil	M	M	MH	Tshea	M	M	M	Zawarib	M	M	MH
Zouq El Hosniyeh	M	M	MH	Zouq El-Haddara	M	M	MH	Zouq El-Hbalsa	M	M	MH
Zouq El-Moqachrine	M	M	M								

## Sud

### Sour

Municipality	21/0 3	22/0 3	23/0 3	Municipality	21/0 3	22/0 3	23/0 3	Municipality	21/0 3	22/0 3	23/0 3
Aaiyeh	M	ML	M	Aalma El-Chaab	M	M	M	Aaytit	M	M	M
Abbassiyeh Sour	M	M	M	Abou Chech	M	M	M	Ain Abou Abdallah	M	M	M
Ain Baal	M	M	M	Arzoun	M	M	MH	Aziyeh	M	M	M
Baflaya	M	M	MH	Barich	M	M	MH	Batouliyah	M	M	M
Bayad	M	M	M	Bazouriyeh	M	M	M	Bediass	M	M	MH
Bestiyat	M	M	MH	Borj El Chemali	M	M	M	Borj En-Naqoura	M	M	M
Borj Rahhal	M	M	MH	Boustane	M	M	M	Btaychiyah	M	M	M
Chaaitiye	M	M	M	Chameh	M	M	M	Chehabiye	M	ML	M
Chehour	M	M	M	Chihine	M	M	M	Debaal Sour	M	M	MH
Deir Amess	M	M	M	Deir Kifa	M	ML	MH	Deir Qanoun El-Ain	M	M	M
Deir Qanoun El-Naher	M	M	MH	Derdghaiya	M	M	MH	Dhayra	M	M	M
Halloussiyeh	M	M	MH	Hamoul	M	M	M	Hanaouey	M	M	MH
Henniye	M	M	M	Hmairi Sour	M	M	MH	Iskandarouna Sour	M	M	M
Jbal El Botom	M	M	M	Jebbin	M	M	M	Jennata	M	M	MH
Jijim	M	M	M	Jouaiya	M	M	M	Kneisset Sour	M	M	M



Maarake	M	M	MH	Maaroub	M	M	MH	Majadel	M	M	M
Majdalzoun	M	M	M	Mansouri Sour	M	M	M	Marnba	M	M	M
Marouahine	M	M	M	Mazraat El-Zalloutiy	M	M	M	Mazraat Mechref	M	M	M
Mazraat Tayr Semhat	M	M	M	Mheilib	M	M	M	Neffakhiyeh	M	M	MH
Niha Sour	M	M	MH	Ouadi Jilo	M	M	MH	Qana	M	M	M
Qolaileh Sour	M	M	M	Rechknay	M	M	M	Rmadiyah	M	M	M
Selha Sour	M	ML	MH	Siddiqine	M	ML	M	Sour	M	M	M
Srifa	M	M	MH	Tayr Debbe	M	M	MH	Tayr Felsay	M	M	MH
Tayr Harfa	M	M	M	Touayri	M	M	M	Toura	M	M	MH
Yanouh Sour	M	M	MH	Yarine	M	M	M	Zebqine	M	M	M

## Saida

Municipality	21/0 3	22/0 3	23/0 3	Municipality	21/0 3	22/0 3	23/0 3	Municipality	21/0 3	22/0 3	23/0 3
Aanqoun	M	M	MH	Aaqtanit	M	M	MH	Aarab Ej-Jall	M	M	MH
Aarab Tabbaya	M	M	MH	Abra Saida	M	M	MH	Adloun	M	M	M
Adousiyeh	M	M	M	Ain-El-Deleb	M	M	MH	Arzai	M	M	MH
Babliyah	M	M	MH	Barty	M	M	MH	Bissariyeh	M	M	MH
Bnaafoul	M	M	MH	Bqosta	M	M	MH	Bramiyeh	M	M	MH
Daoudiyeh	M	M	MH	Dareb El-Sim	M	M	MH	Erkay	M	M	MH
Ghassanieh	M	M	MH	Ghazieh	M	M	MH	Hajjeh	M	M	MH
Haret Saida	M	M	MH	Hartiyeh	M	M	MH	Hlaliye Saida	M	M	MH
Insariyat	M	M	MH	Jazira Saida	M	M	MH	Kafar Bit	M	M	MH
Kaoutariyet El-Siyad	M	M	MH	Kfar Chellal	M	M	MH	Kfar Hatta Saida	M	M	MH
Kfar Milke Saida	M	M	MH	Khartoum	M	M	MH	Khaziz	M	M	MH
Khirbet Ed-Douair Sa	M	M	MH	Khirbet El-Bassal	M	M	MH	Khrayeb Saida	M	M	MH
Loubieh	M	M	MH	Maghdouche	M	M	MH	Majdelyoun	M	M	MH
Matariyet El-Choumar	M	M	MH	Matayriyeh	M	M	MH	Mazraat 'Mseileh	M	M	MH
Mazraat 'Snaiber	M	M	MH	Mazraat Aarab Soukka	M	M	MH	Mazraat Deir Taqla	M	M	M
Mazraat El Yahoudiye	M	M	M	Mazraat El-Housseini	M	M	MH	Mazraat El-Mhaydaleh	M	M	MH
Mazraat El-Ouasta	M	M	M	Mazraat Jamjim	M	M	M	Mazraat Kaoutariyet	M	M	MH
Mazraat Kfar Badda	M	M	MH	Mazraat Oussamiyat	M	M	MH	Mazraat Sari	M	M	MH
Mazraat Sinai	M	M	MH	Meemariyeh	M	M	MH	Merouaniyeh	M	M	MH
Miyeh ou Miyeh	M	M	MH	Najjariyeh	M	M	MH	Qaaqaiyat El-Snaouba	M	M	MH
Qnarit	M	M	MH	Qraiye Saida	M	M	MH	Saida Ed-Dekermane	M	M	MH
Saida El-Oustani	M	M	MH	Saida El-Qadimeh	M	M	MH	Saida Kefraya	M	M	MH
Saksakiyeh	M	M	MH	Salhie Saida	M	M	MH	Sarafand	M	M	MH
Sfenta	M	M	M	Tafahta	M	M	MH	Tanbourit	M	M	MH
Tebna	M	M	MH	Zaghdraiya	M	M	MH	Zeita	M	M	MH
Zrariyeh	M	M	MH								

## Jezzine

Municipality	21/0 3	22/0 3	23/0 3	Municipality	21/0 3	22/0 3	23/0 3	Municipality	21/0 3	22/0 3	23/0 3
Ain El-Mir (El Estab	M	M	MH	Anane	ML	M	M	Aramta	ML	ML	MH
Ariya	L	ML	M	Aychiyeh	ML	M	M	Azour	L	ML	M
Baba	L	ML	M	Bayssour Jezzine	M	M	MH	Benoueteh Jezzine	L	ML	M
Bhannine	L	ML	M	Bisri	L	ML	M	Bkassine	L	ML	M
Bouslaya	ML	ML	M	Btedine El-Leqech	L	ML	M	Chbail	L	ML	M
Choualiq Jezzine	M	M	MH	Dahr Ed-Deir	M	M	M	Deir El Qattine	L	ML	M

Demachqiyeh	M	M	MH	Ghabbatiyeh	L	ML	M	Harf Jezzine	L	ML	M
Hassaniyeh	M	M	MH	Haytouleh	M	M	MH	Haytura	L	ML	M
Hidab	L	ML	M	Homsiyeh	L	ML	MH	Jabal Toura	L	ML	MH
Jarmaq	M	M	MH	Jensnaya	M	M	MH	Jernaya	M	M	MH
Jezzine	L	ML	MH	Karkha	M	M	M	Kfar Falous	M	M	MH
Kfar Houna	L	ML	MH	Kfar Jarrah	M	M	MH	Lebaa	M	M	MH
Louayzet Jezzine	L	ML	MH	Machmouche	L	ML	M	Mahmoudiyeh Jezzine	M	M	MH
Maknounye Jezzine	L	ML	M	Maraat Ouzaïyeh	M	M	MH	Mazraat Daraya	L	ML	MH
Mazraat El-Aarqoub	L	ML	M	Mazraat El-Mathane	L	ML	M	Mazraat El-Rahbane	L	L	M
Mazraat Khallet Khaz	ML	ML	M	Mazraat Louzid (Loua	L	ML	M	Mazraat Qrouh	ML	ML	MH
Mazraat Tamra	M	M	MH	Mazraat Zighrine Jez	ML	ML	M	Mazraat	L	ML	M
Mharbiyeh	M	M	MH	Midane Jezzine	L	ML	M	Mjeydel Jezzine	M	M	MH
Mlikh	L	ML	MH	Mrah El-Hbasse	M	M	MH	Ouadi Baanqoudaine	M	M	MH
Ouadi El-Laymoun	M	M	MH	Ouardiyeh	ML	M	M	Qabaa Jezzine	L	ML	M
Qatrani	L	ML	M	Qaytouleh	L	ML	M	Qtaleh Jezzine	ML	M	M
Rihane Jezzine	ML	ML	MH	Rimat	ML	M	M	Roum	L	M	M
Roummanet	L	ML	MH	Sabbah	L	ML	M	Saydoun	ML	ML	M
Sfaray	M	M	M	Snaya	L	ML	M	Sojoud	L	ML	M
Srayri	ML	ML	MH	Taaïd	L	ML	M	Wadi Jezzine	L	ML	M
Zhalta	L	ML	MH								

## Bekaa

### West Bekaa

Municipality	21/0 3	22/0 3	23/0 3	Municipality	21/0 3	22/0 3	23/0 3	Municipality	21/0 3	22/0 3	23/0 3
Aammiq BG	ML	M	M	Ain El Tineh BG	L	ML	MH	Ain Zebdeh	L	ML	MH
Ana	ML	ML	M	Aytanit	L	L	M	Baaloul BG	ML	ML	MH
Bab Mareh	ML	ML	MH	Chouberqiye Aammiq	M	M	M	Dakoue	M	ML	M
Deir Ain El-Jaouze	L	ML	MH	Deir Tahniche	ML	ML	M	Ghaza	M	ML	M
Harime El-Soughra	M	M	M	Hoch Harimeh	M	M	M	Jazira BG	ML	M	M
Jib Jennine	ML	ML	M	Kamed-El-Laouz	ML	ML	M	Kefraya BG	ML	ML	M
Khiara El Atika	M	M	M	Khiara	M	ML	M	Khirbet Qanafar	L	ML	MH
Lala	ML	ML	M	Lebbaya BG	ML	ML	MH	Loussa	ML	ML	MH
Machghara	L	ML	MH	Manara (Hammara) BG	ML	M	M	Mansoura BG	M	ML	M
Marej BG	M	M	MH	Maydoun	L	ML	MH	Ouaqf BG	ML	M	M
Qaraaoun	ML	ML	MH	Qelya	ML	ML	MH	Raouda (Istabel)	M	M	MH
Saghbine	L	ML	M	Sohmor	ML	ML	MH	Soltan Yacoub el Ara	M	ML	M
Souairy	M	M	M	Sultan Yaacoub	M	ML	M	Tal Znoun	ML	ML	M
Yehmor BG	ML	ML	MH	Zilaya	L	ML	M				

### Zahle

Municipality	21/0 3	22/0 3	23/0 3	Municipality	21/0 3	22/0 3	23/0 3	Municipality	21/0 3	22/0 3	23/0 3
Aanjar (Haouch Mouss	M	M	M	Ablah	M	M	MH	Ain Kfarzabad	M	M	MH
Ali-El-Nahri	M	M	MH	Bar Elias	M	M	MH	Bouarej	ML	M	MH
Cheberqiyet Tabet	M	M	MH	Chtaura	M	M	MH	Deir El Ghazal	M	M	MH
Delhamiyet Zahle	M	M	MH	Ferzol	M	M	MH	Haouch El-Ghanam	M	M	MH
Haouch Es-Siyadeh	M	M	MH	Haouch Hala	M	M	MH	Haouch Mandara	M	M	MH

Haouch Qayssar	ML	M	MH	Hezerta	ML	M	MH	Hosh Moussa	M	M	MH
Jdita	M	M	MH	Kfarzabad	M	M	MH	Ksara	M	M	MH
Majdel Aanjar	M	M	M	Makssi	M	M	MH	Massa	M	M	MH
Mazraat Er-Remtaniye	ML	M	MH	Mrayjat Zahle	ML	M	MH	Mzaraa Zahle	ML	M	MH
Nabi Ayla	M	M	MH	Nasriyet Rizk	M	M	MH	Nasriyet Zahle	ML	M	MH
Niha Zahle	M	M	MH	Ouadi Ed-Deloum	ML	M	MH	Ouadi El-Arayech	ML	M	MH
Qaa El Rim	ML	M	MH	Qab Elias	M	M	MH	Qousaya	M	M	MH
Rhit	M	M	MH	Riyak	M	M	MH	Saadnayel	M	M	MH
Taal El-Akhdar	ML	M	M	Taalbeya	M	M	MH	Taanayel	M	M	MH
Talamara	M	M	MH	Tcheflik Edde Haouch	ML	M	MH	Tcheflik Qiqano	ML	M	MH
Terbol Zahle	M	M	MH	Touaite Zahle	ML	M	MH	Zahle Aradi	M	M	MH
Zahle El-Berbara	ML	M	MH	Zahle El-Maallaqa	ML	M	MH	Zahle El-Midane	ML	M	MH
Zahle Er-Rassiye	ML	M	H	Zahle Haouch El-Ouma	M	M	MH	Zahle Haouch El-Ouma	M	M	MH
Zahle Haouch Ez-Zara	ML	M	MH	Zahle Maalaga Aradi	M	M	MH	Zahle Mar Antonios	ML	M	MH
Zahle Mar Elias	ML	M	MH	Zahle Mar Gerios	ML	M	MH	Zahle Saydet En-Naja	ML	M	MH
Zebdoul	M	M	M								

## Rachaiya

Municipality	21/0 3	22/0 3	23/0 3	Municipality	21/0 3	22/0 3	23/0 3	Municipality	21/0 3	22/0 3	23/0 3
Ain Arab Rachaiya	M	M	M	Ain Ata	L	ML	M	Ain Harche	L	ML	M
Aqabe Rachaya	M	M	M	Ayha	M	M	MH	Ayta El Fokhar	M	M	M
Bakifa Rachaya	ML	ML	M	Bakka	M	M	M	Beit Lahya	ML	ML	M
Bireh Rachaiya	M	ML	M	Daheer El Ahmar	M	ML	M	Deir El-Achayer	M	M	M
Heloua Rachaiya	M	M	M	Hoch El Qannabeh Rac	ML	ML	M	Kaoukaba Bou Arab	ML	ML	M
Kfar Danis	M	ML	M	Kfar Mechki	ML	ML	M	Kfar Qouq	M	M	M
Kherbet Rouha	M	ML	M	Majdel Balhiss	ML	ML	MH	Mdoukha	M	M	M
Mhaydseh Rachaiya	ML	ML	M	Nabi Safa	ML	ML	M	Rachaiya	ML	M	MH
Rafid Rachaiya	M	ML	M	Selsata (Mazraat Dei	M	M	M	Tannoura	ML	M	M
Yanta	M	M	M								

## Beyrouth

### Beyrouth

Municipality	21/0 3	22/0 3	23/0 3	Municipality	21/0 3	22/0 3	23/0 3	Municipality	21/0 3	22/0 3	23/0 3
Achrafieh	M	M	MH	Ain el-Mreisse	M	M	MH	Bachoura	M	M	MH
Beirut Central Distr	M	M	MH	Marfai	M	M	MH	Mazraa	M	M	MH
Medaouar	M	M	MH	Minet el-Hosn	M	M	MH	Mwssaitbeh	M	M	MH
Ras Beirut	M	M	MH	Rmeil	M	M	MH	Saifi	M	M	MH
Zqaq el-Blat	M	M	MH								





## نشرة الطقس الصادرة عن مصلحة الأرصاد الجوية بالمديرية العامة للطيران المدني

**النشرة: الصباحية**

**الإثنين : 21 آذار 2016**

**الحالة العامة :** طقس متقلب على الحوض الشرقي للمتوسط، يتأثر يومي الأربعاء والخميس بكتل هوائية دافئة .

**الطقس المتوقع في لبنان:**

**الإثنين :** غائم جزئياً مع ضباب على المرتفعات وأمطار خفيفة متفرقة أحياناً مع استقرار درجات الحرارة.

**الثلاثاء :** غائم جزئياً مع ضباب على المرتفعات صباحاً دون تعديل يذكر بدرجات الحرارة.

**الأربعاء:** قليل الغيوم إلى غائم جزئياً مع ارتفاع ملحوظ بدرجات الحرارة وانخفاض نسبة الرطوبة، كما تنشط الرياح خاصة في جنوب البلاد ممّا يؤدي إلى ظهور طبقات من الغبار.

الأربعاء		الثلاثاء		الإثنين		درجات الحرارة المتوقعة	
27/12	27/11	20/12	20/11	20/12	20/11	صور	على الساحل
27/14		20/14		20/14		بيروت	
26/11		19/11		19/11		طرابلس	
21/8	21/7	12/7	12/6	11/7	11/6	بيصور	فوق الجبال
20/7		11/6		10/6		قرطبا	
-/-		-/-		-/-		فقرا	
14/1		5/1-		3/1-		الارز	
24/7	24/7	15/6	15/6	14/6	14/6	القرعون	في الداخل
22/9		13/8		12/8		مرجعيون	
23/8		14/7		13/7		زحلة	

**الرياح السطحية:** جنوبية غربية، سرعتها بين 10 و 40 كلم/س.

**الإنقشاع:** متوسط.

**الرطوبة النسبية على الساحل:** بين 45 و 75 %.

**حرارة سطح الماء:** 19°م.

**حال البحر:** معتدل ارتفاع الموج.

**أي ما يعادل:** 764 ملم زئبق

**الضغط الجوي:** 1018 hPa

**ساعة غروب الشمس:** 17:51

**ساعة شروق الشمس:** 05:40

كمية الأمطار المسجلة حتى الساعة السادسة صباحاً (ت.ع)

السنة الماضية حتى اليوم	المعدل العام	المجموع حتى اليوم	خلال 24 ساعة	المحطات
755,2 ملم	729 ملم	431.4 ملم	1.8 ملم	بيروت - المطار
859,3 ملم	729 ملم	832.9 ملم	1.7 ملم	طرابلس
669,7 ملم	546 ملم	379.8 ملم	1 ملم	زحلة