

Lebanon Fire Risk Bulletin



CIVIL DEDEFENCE

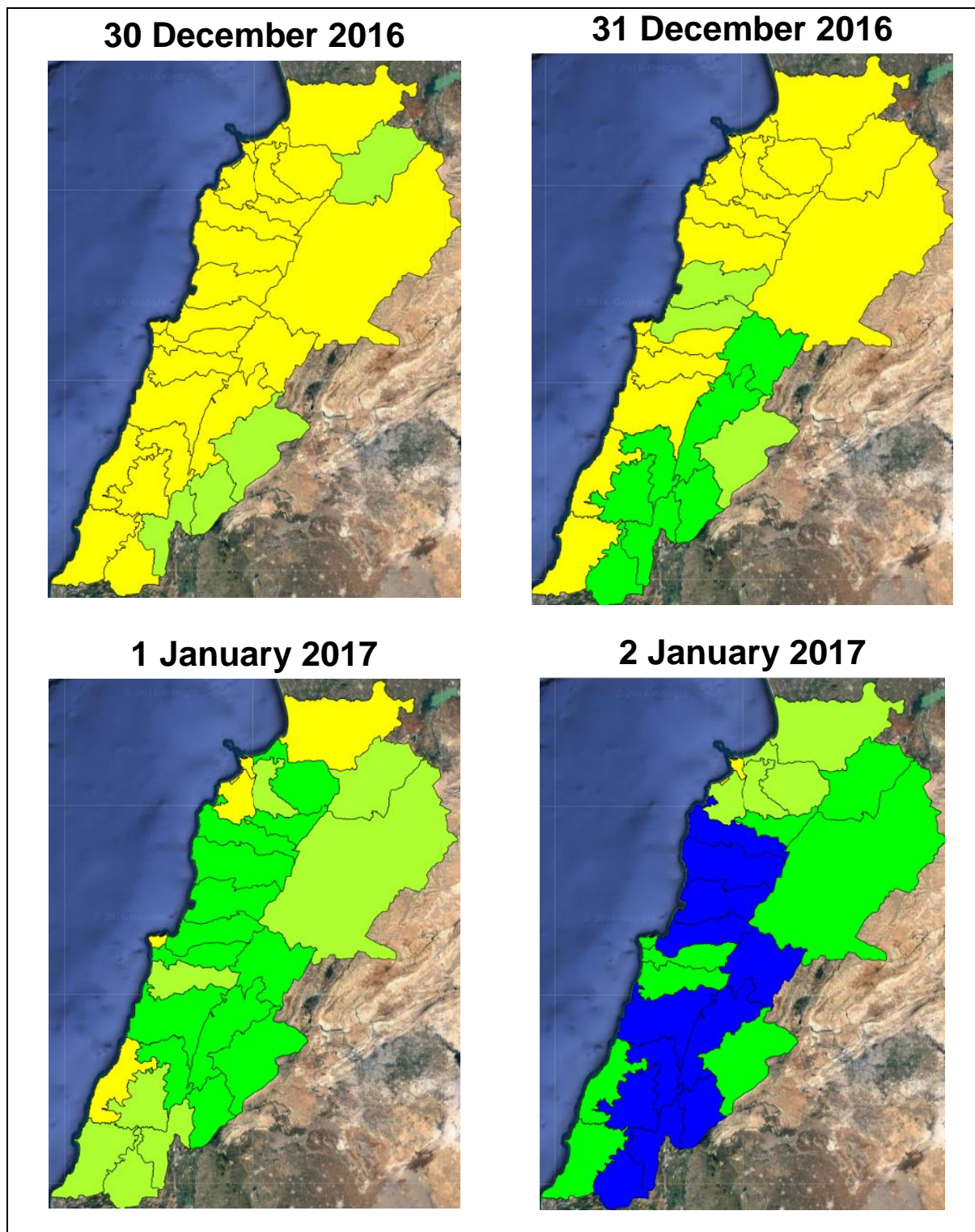
Refer to cadast condition.

General description of potential fire risk situation

Symbol	Level of risk	Meaning and actions
VL	Very low	Very low fire risk. Controlled burning operations can be hardly executed due to high fuel moisture content. Normally wildfires self-extinguish.
L	Low	Low fire risk. Controlled burning operations can be executed with a reasonable degree of safety.
ML	Medium low	Medium-low fire risk. Controlled burning operations can be executed in safety conditions. All the fires need to be extinguished.
M	Medium	Medium fire risk. Controlled burning operations would be avoided. All the fires need to be very well extinguished.
M	Medium high	Controlled burning is not recommended. Open flame will start fires. Cured grasslands and forest litter will burn readily. Spread is moderate in forests and fast in exposed areas. Patrolling and monitoring is suggested. Fight fires with direct attack and all available resources.
H	High	Ignition can occur easily with fast spread in grass, shrubs and forests. Fires will be very hot with crowning and short to medium spotting. Direct attack on the head may not be possible requiring indirect methods on flanks. Patrolling and monitoring the territory is highly suggested.
E	Extreme	Ignition can occur also from sparks. Fires will be extremely hot with fast rate of spread. Control may not be possible during day due to long range spotting and crowning. Suppression forces should limit efforts to limiting lateral spread. Damage potential total. Patrolling and monitoring the territory is highly suggested.

Beirut, 31 December 2016

FIRE RISK INDEX

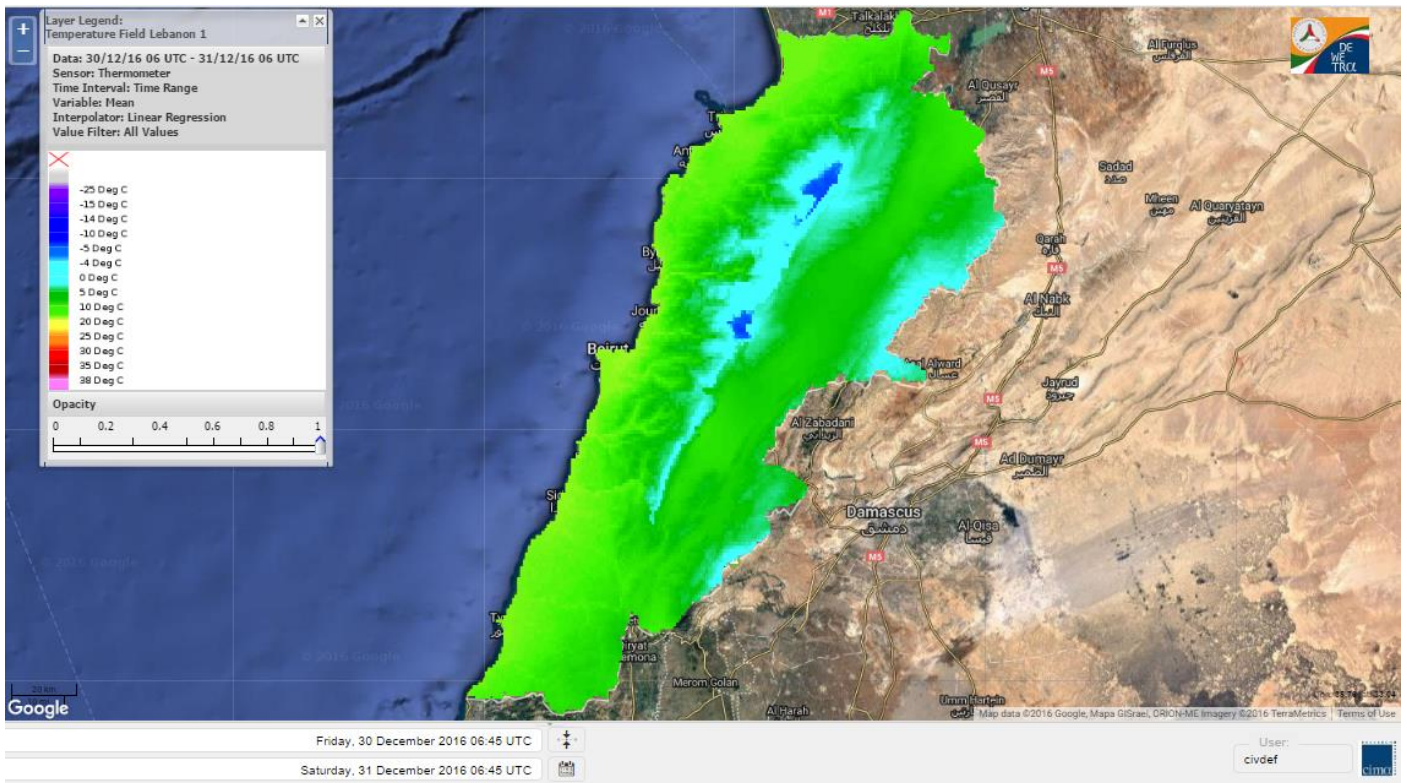


Layer Legend:
Lebanon Wildfire Risk Index 1

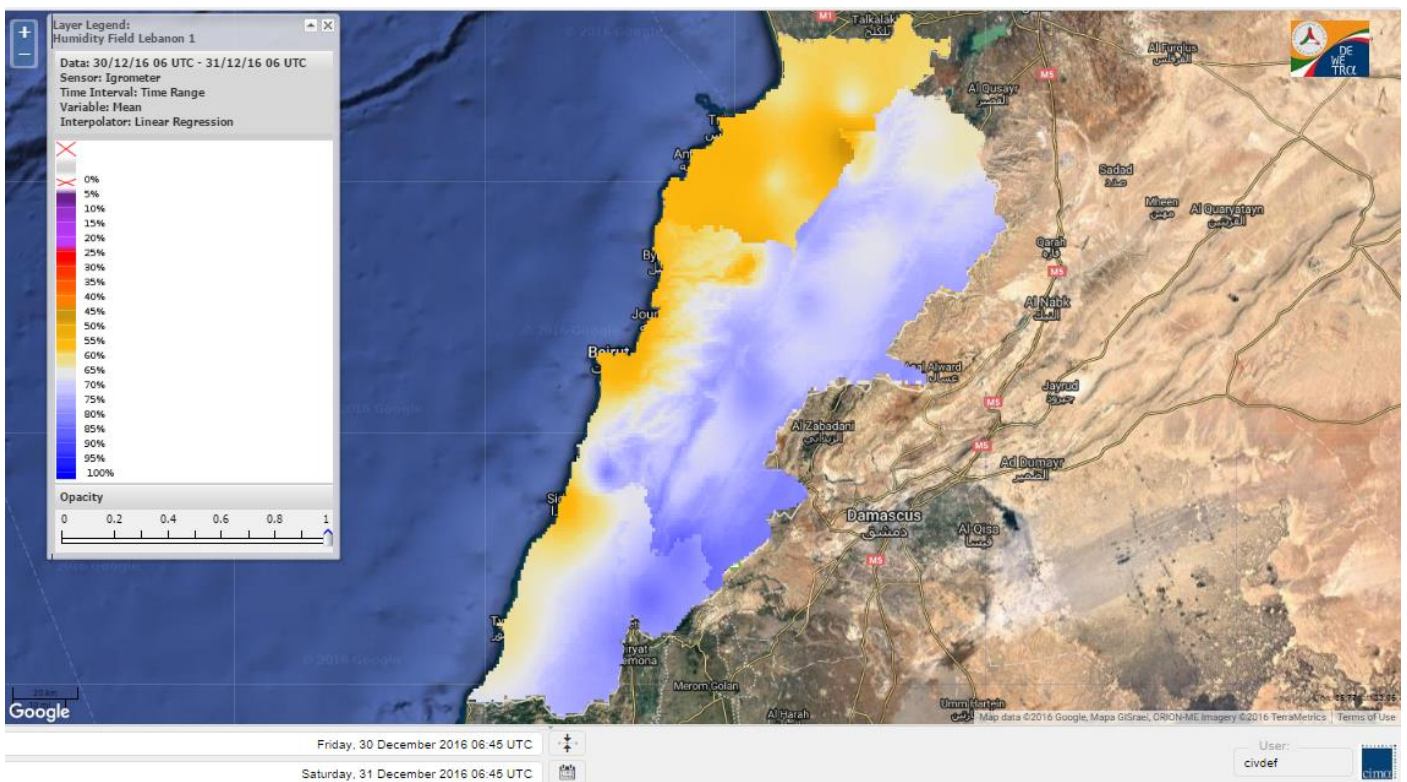
Data: Run: 31/12/2016 00:00. Forecast for 31
Model: RISICO for the Republic of Lebanon
Variable: Fire Weather Index
Spatial Resolution: Caza

- VERY LOW
- LOW
- MEDIUM-LOW
- MEDIUM
- MEDIUM-HIGH
- HIGH
- EXTREME

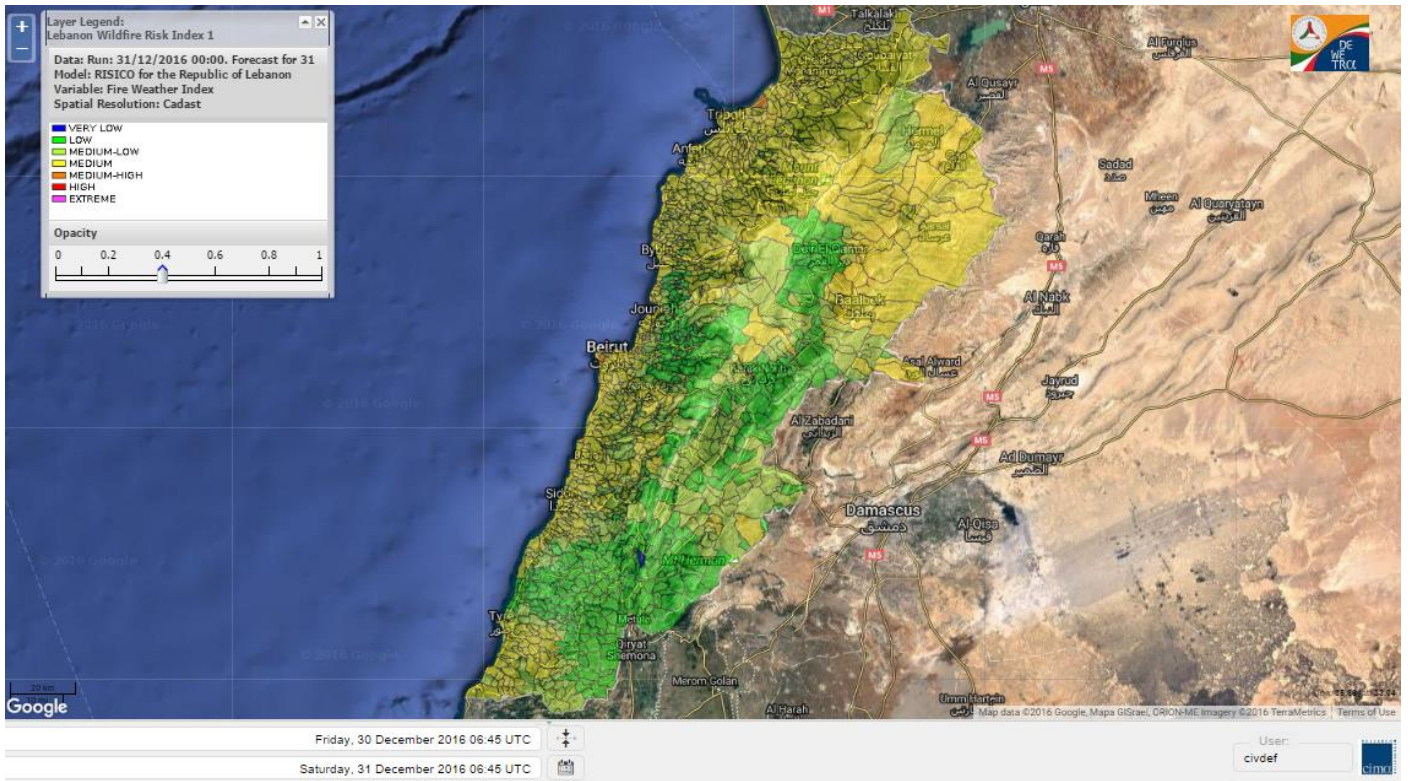
Lebanon temperature for 31 December 2016



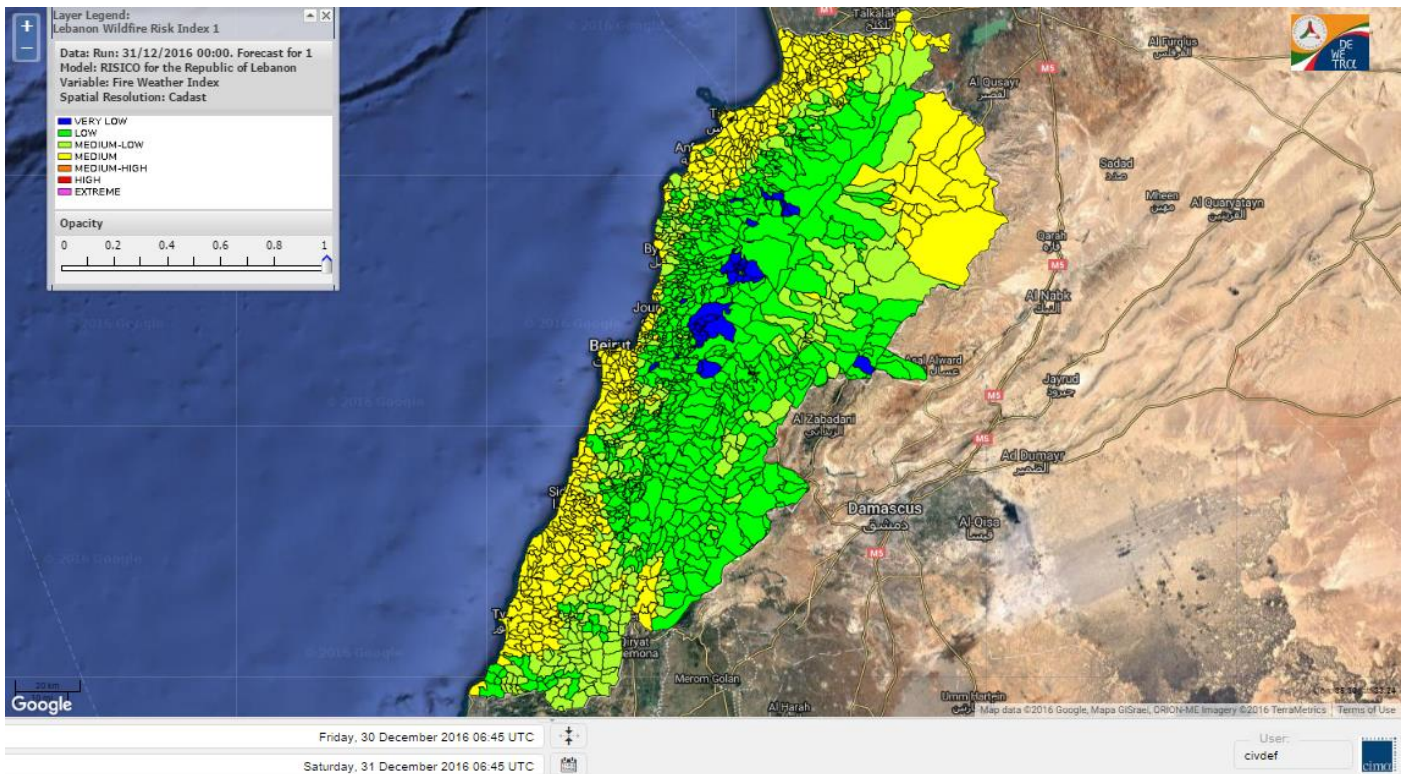
Lebanon humidity for 31 December 2016



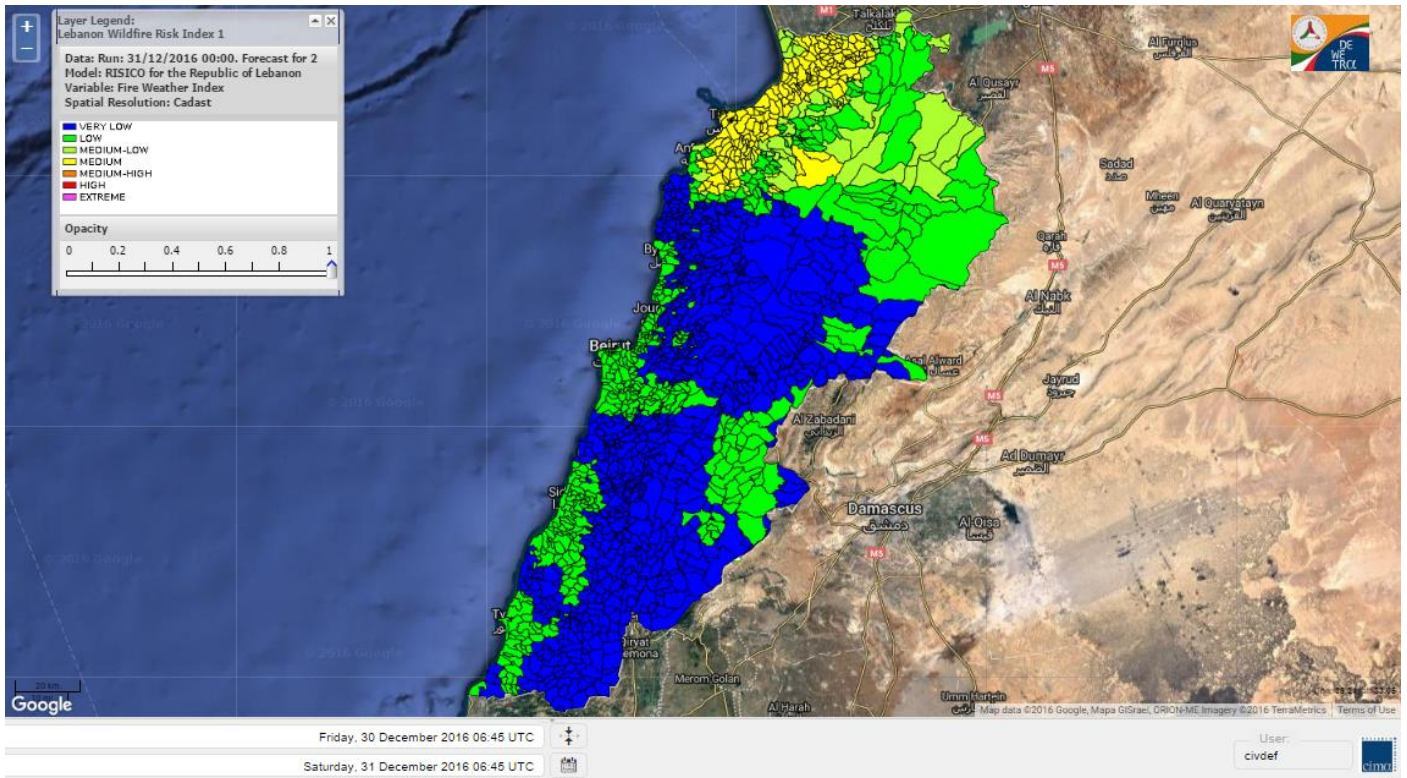
Lebanon for 31 December 2016



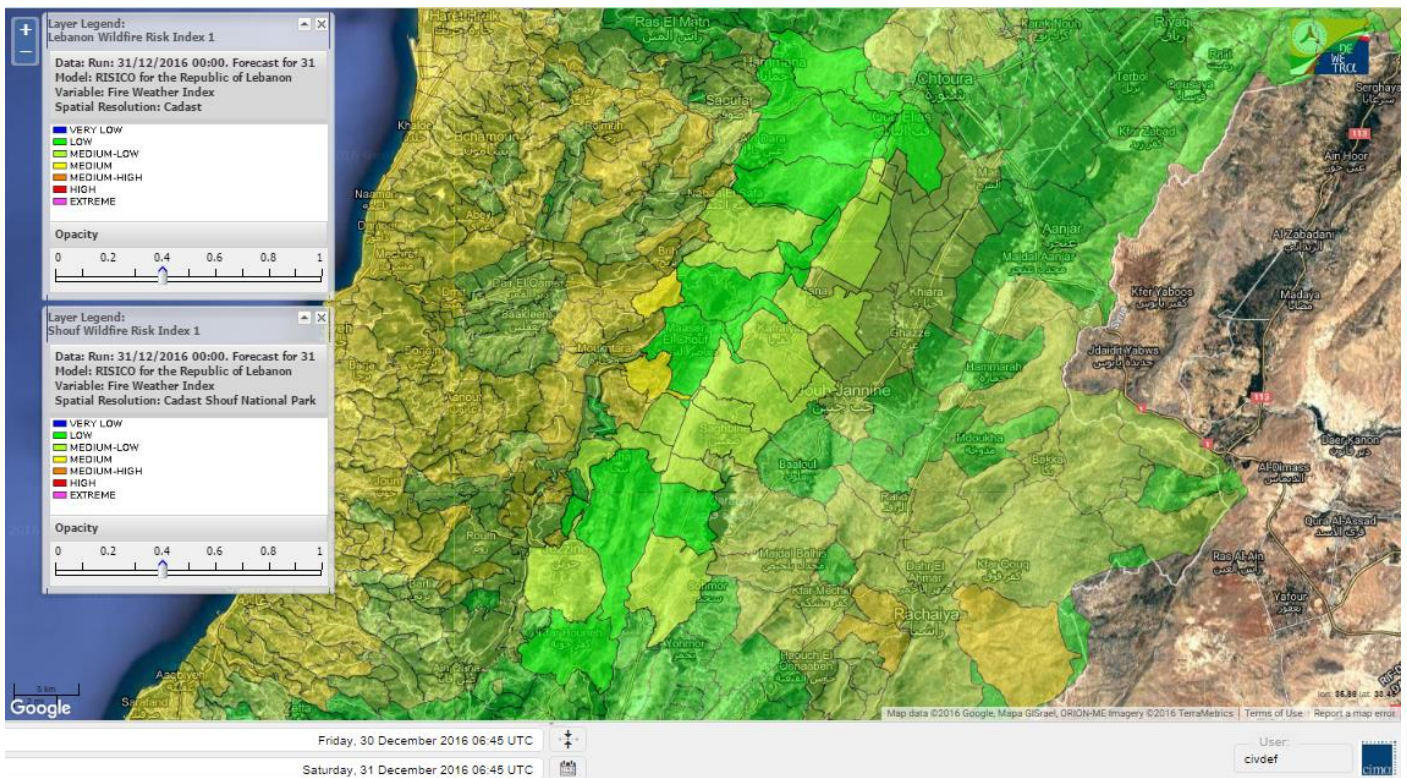
Lebanon for 1 January 2017



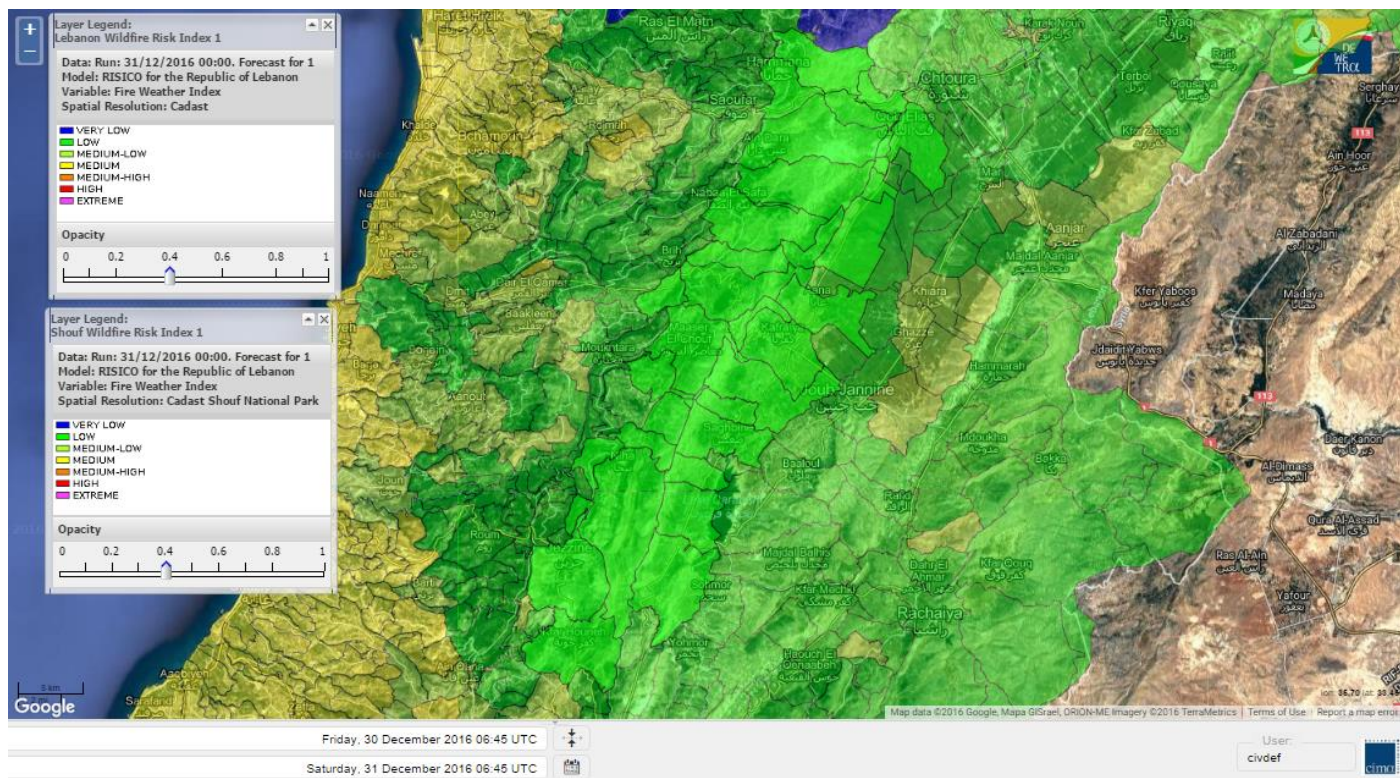
Lebanon for 2 January 2017



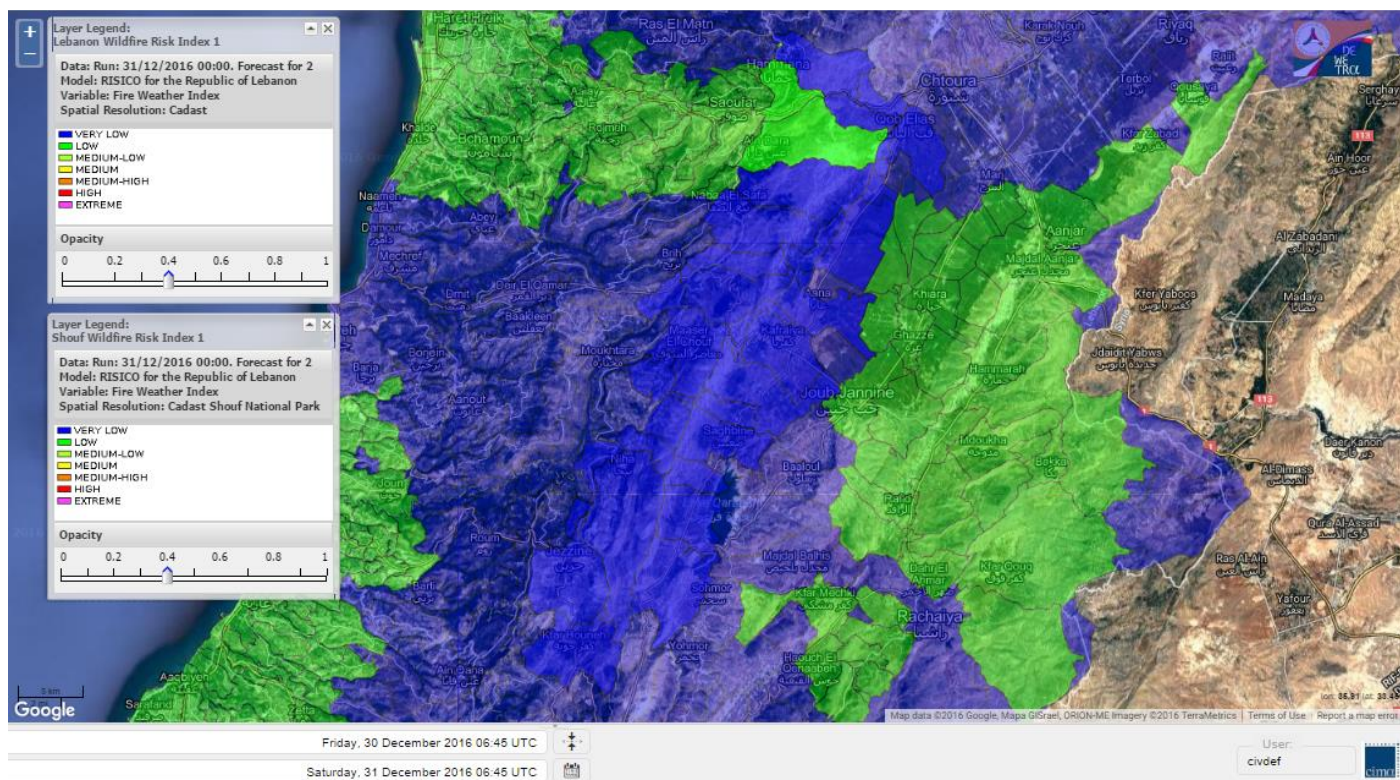
Shouf Biosphere Reserve Forecast for 31 December 2016



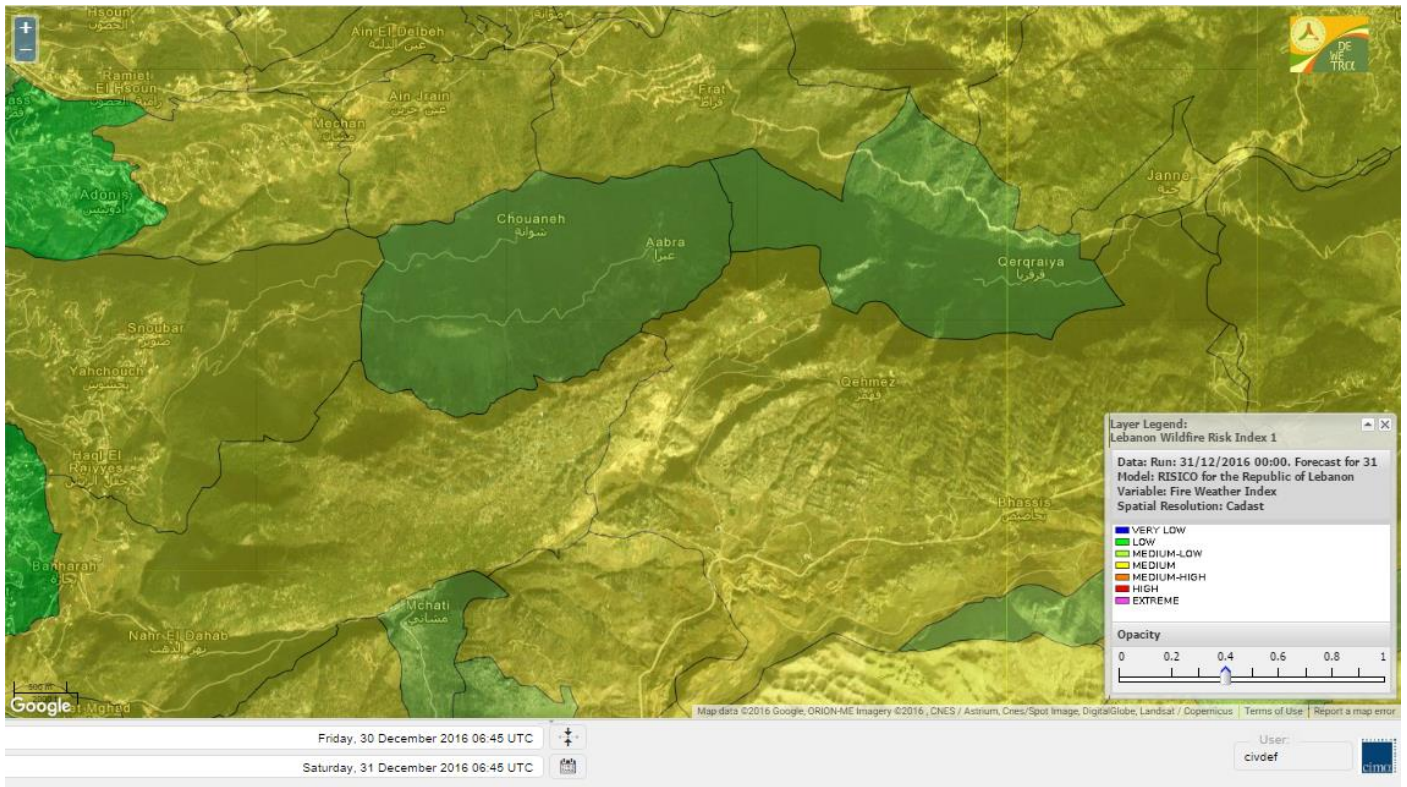
Shouf Biosphere Reserve Forecast for 1 January 2017



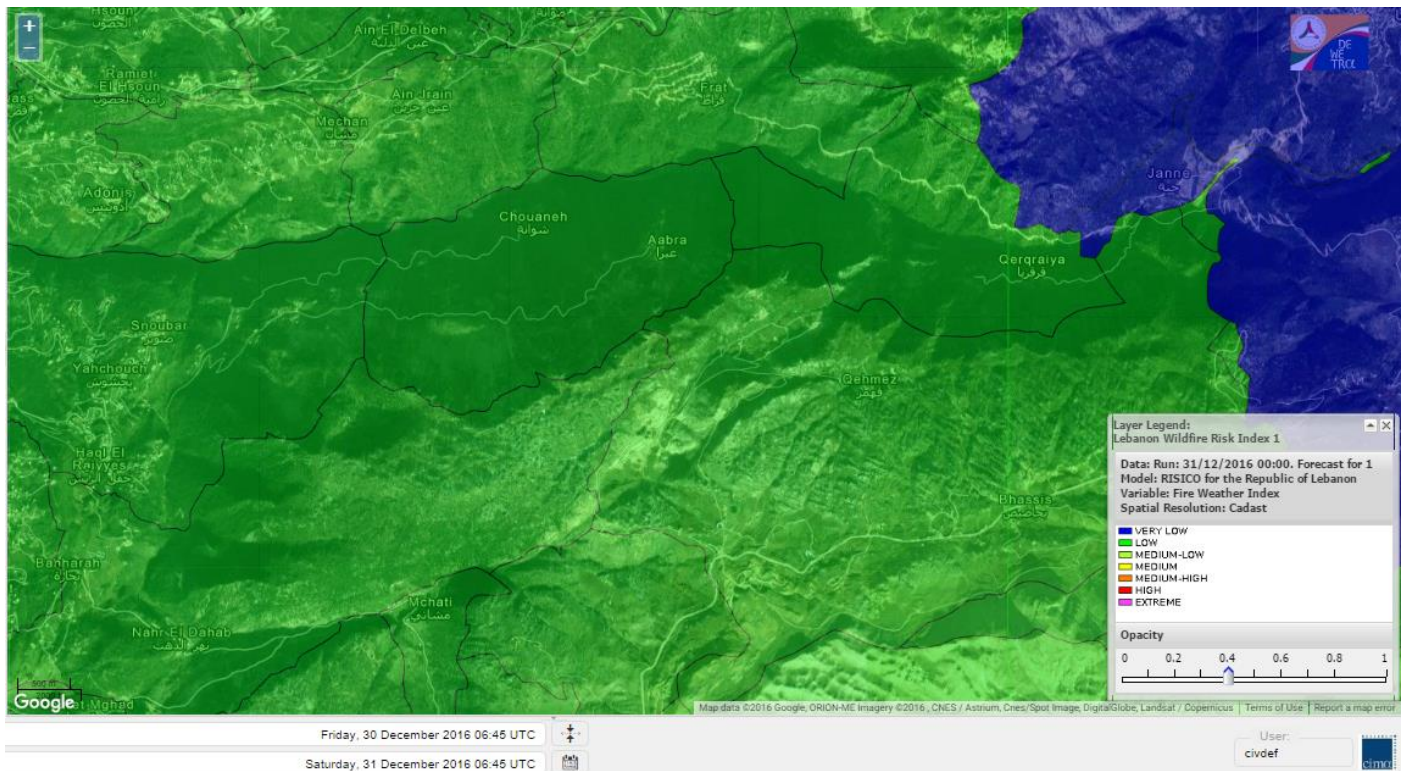
Shouf Biosphere Reserve Forecast for 2 January 2017



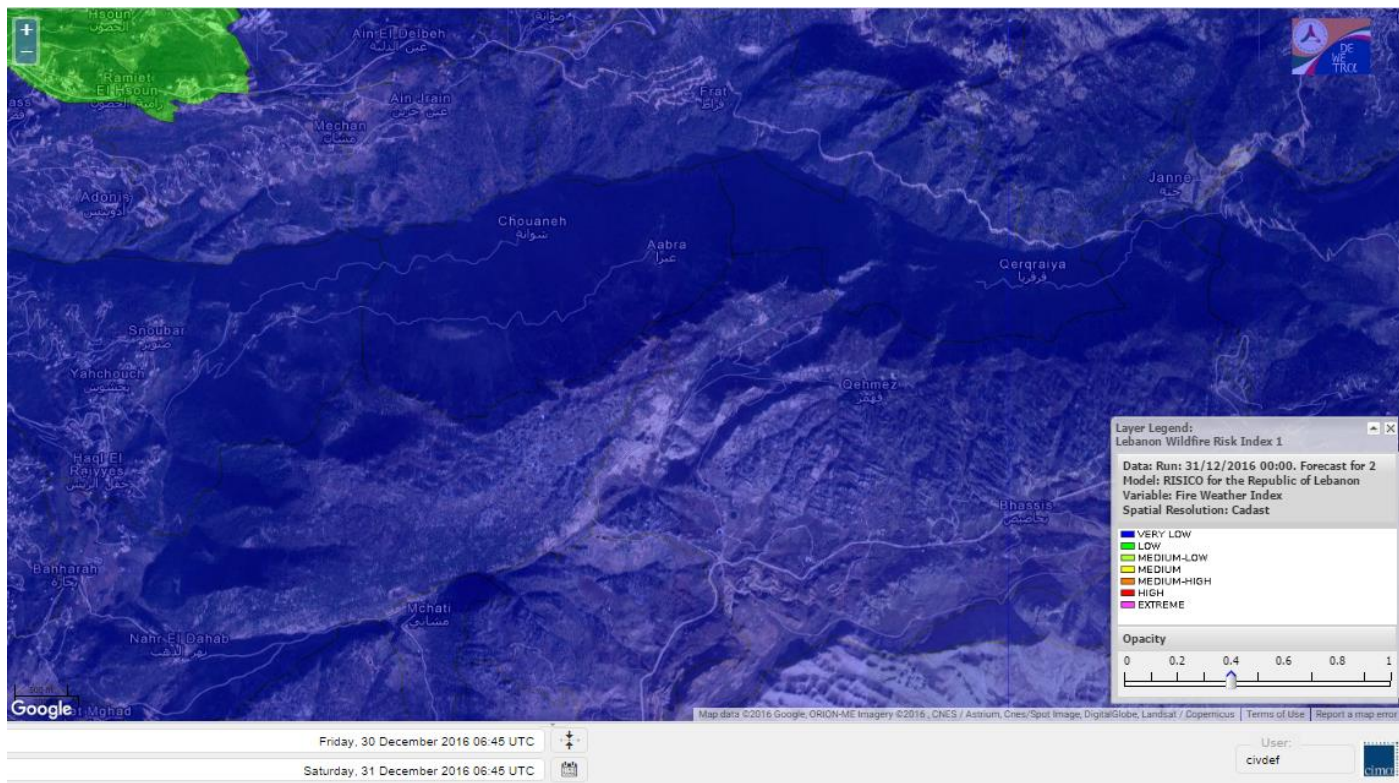
Jabal Moussa Reserve Forecast for 31 December 2016



Jabal Moussa Reserve Forecast for 1 January 2017



Jabal Moussa Reserve Forecast for 2 January 2017



Nord

Koura

Municipality	31-Dec	01-Jan	02-Jan	Municipality	31-Dec	01-Jan	02-Jan	Municipality	31-Dec	01-Jan	02-Jan
Aaba	M	M	M	Afsaddiq	M	M	M	Ain Ekriane	M	M	M
Amioun	M	M	M	Anfeh	M	M	L	Badbhoun	M	M	M
Barghoun	M	M	M	Barsa	M	M	M	Batroumine	M	M	M
Bdebba	M	M	M	Bechmizine	M	M	M	Bednayet El-Koura	M	ML	VL
Bhabbouch El-Koura	M	M	M	Bkeftine	M	M	M	Bnehran	M	ML	ML
Bqaiia El-Koura	M	M	M	Bsarma	M	M	M	Btaaboura	M	M	M
Bterram	M	M	M	Btouratij	M	M	M	Bziza	M	M	M
Dar Beechtar	M	M	M	Dar Chmezzine	M	M	M	Deddeh	M	M	M
Deir El-Balamand	M	L	L	Fih	M	M	M	Hraiche	M	M	ML
Ijdaabrine	M	ML	L	Kaftoun	M	ML	ML	Kefraya El-Koura	M	M	VL
Kfarakka	M	M	M	Kfarhata	M	ML	L	Kfarhazir	M	M	ML
Kfarkahel	M	M	M	Kfarsaroun	M	M	M	Kosba	M	M	M
Mejdel el-Koura	M	ML	L	Nakhle	M	M	M	Qalhat	M	ML	L
Ras Masqa	M	M	M	Rechdibbine	M	M	M	Zakroun	M	M	ML
Zgharta El-Mtaouile	M	L	L								

Bcharre

Municipality	31-Dec	01-Jan	02-Jan	Municipality	31-Dec	01-Jan	02-Jan	Municipality	31-Dec	01-Jan	02-Jan
Aabdine	M	L	ML	Bane	M	L	M	Barhelioun	M	L	L
Bazouone	M	VL	VL	Becharre	M	L	L	Beit Menzer	M	L	L
Billa	M	L	ML	Blaouza	M	L	ML	Bqaa Kafra	M	VL	VL
Bqerqacha	M	VL	VL	Breissat	M	L	L	Dimane	M	L	L
Hadath El Jobbeh	M	L	L	Hadchit	M	VL	L	Hasroun	M	L	VL
Mazraat Aassaf	M	VL	VL	Mazraat Bani Saab	M	L	L	Mchaa El-Jobbeh	L	VL	VL
Metrit	M	L	L	Moghr El-Ahoual	M	ML	ML	Ouadi Qannoubine	M	VL	VL
Qanat	M	L	L	Qnayouer	M	L	L	Tourza	M	L	L

Batroun

Municipality	31-Dec	01-Jan	02-Jan	Municipality	31-Dec	01-Jan	02-Jan	Municipality	31-Dec	01-Jan	02-Jan
Aabrine	M	L	VL	Aalali	M	L	VL	Aartiz	M	L	VL
Abdelli	M	L	VL	Ajdabra	M	L	VL	Assia	M	L	VL
Basbina	M	M	VL	Batroun	M	M	VL	Bcheleh	M	L	VL
Bechtoudar	M	L	VL	Beit Chlala	M	L	VL	Beit Kassab	M	VL	VL
Bijdarfil	M	M	VL	Bqesmaya	M	L	L	Chatine	M	L	VL
Chebtin	M	L	VL	Chekka	M	M	L	Daael	M	L	VL
Dahr Abi Yaghi	M	L	VL	Daraya El-Batroun	M	M	L	Deir Billa	M	L	L
Deir Kfifane	M	ML	VL	Deir Mar Youhanna EL	M	L	VL	Deir Mar Youssef Jra	M	L	VL
Douma	M	L	VL	Douq	M	L	VL	Eddeh El-Batroun	M	ML	VL
Ftihat El-Batroun	M	L	VL	Ghouma	M	ML	VL	Hadtoun	M	L	VL
Hamat	M	ML	VL	Harbouna	M	L	VL	Hardine	M	L	VL
Helta	M	L	VL	Hery	M	M	VL	Jebila	M	L	L
Jrabta El-Batroun	M	L	VL	Jrane El-Batroun	M	M	VL	Kfar Aabida	M	ML	VL
Kfar Halda	M	L	VL	Kfarb Shlaimane	M	L	VL	Kfarhatna	M	L	VL
Kfarhay	M	ML	L	Kfarhelos	M	L	VL	Kfifane	M	M	VL

Kfour El Arabi	M	L	VL	Koubba	M	M	VL	Kour	M	ML	L
Mar Mama	M	L	VL	Masrah	M	L	VL	Mehmarch	M	ML	VL
Mrah Chdid	M	ML	VL	Mrah El Ziyat	M	ML	VL	Mrah El-Hajj	M	L	VL
Nahle El-Batroun	M	L	VL	Niha El-Batroun	M	L	L	Ouajh El-Hajjar	M	ML	VL
Ouata Houb	M	VL	VL	Qatnaaoun	M	ML	VL	Racha	M	L	VL
Rachana	M	ML	VL	Rachkida	M	ML	VL	Ram El-Batroun	M	L	VL
Ras Nahhach	M	ML	VL	Selaata	M	M	VL	Sghar	M	ML	VL
Smar Jbayl	M	ML	VL	Sourat El-Batroun	M	L	VL	Tannourine El-Faouqa	M	L	VL
Tannourine Et-Tahta	M	L	VL	Thoum	M	L	VL	Toula El-Batroun	M	L	VL
Zan	M	L	VL								

Zgharta

Municipality	31-Dec	01-Jan	02-Jan	Municipality	31-Dec	01-Jan	02-Jan	Municipality	31-Dec	01-Jan	02-Jan
Aachach	M	M	M	Aalma	M	M	M	Aarde	M	M	M
Aintourine	M	ML	L	Arabet Qozhaya	M	L	L	Arde	M	M	M
Arjis	M	M	M	Asnoun	M	M	M	Ayto	M	L	L
Basloukit	M	L	M	Bchannine	M	M	M	Besebeel	M	M	M
Bhairret Toula	M	VL	L	Bnachee	M	ML	M	Boussit	M	M	M
Danha	M	M	M	Daraiya Zgharta	M	M	M	Deir Jdeide	M	M	M
Ehden	M	L	ML	Halan	M	M	M	Hariq Zgharta	M	M	M
Houakir	M	L	ML	Hraiqis	M	M	ML	laal	M	M	M
Ijbaa	M	ML	ML	Karm Saddeh	M	L	L	Kfarchakhna	M	M	M
Kfardlaqous	M	M	M	Kfarfou	M	M	M	Kfarhata Zgharta	M	M	M
Kfarhoura	M	M	M	Kfarsghab	M	L	M	Kfaryachit	M	M	M
Kfarzaina	M	M	M	Khaldiye	M	M	M	Mazraat Ajbeaa	M	M	M
Mazraat Et-Teffah	ML	L	L	Mazraat Jneid	M	M	M	Mejdlaiya Zgharta	M	M	M
Merh Kfarsghab	M	ML	ML	Miryata	M	M	M	Miziara	M	L	L
Mzraat Kefraya	M	M	M	Qorah Bach	M	M	M	Rachiine	M	M	M
Ras Kifa	M	ML	ML	Sakhra	M	ML	M	Sebhel Zgharta	M	ML	ML
Serhel	M	L	L	Tallet Zgharta	M	M	M	Toula Zgharta	M	L	L
Zgharta	M	M	M								

Minieh-Denniye

Municipality	31-Dec	01-Jan	02-Jan	Municipality	31-Dec	01-Jan	02-Jan	Municipality	31-Dec	01-Jan	02-Jan
Aasaymout	M	L	L	Aaymar	M	L	ML	Aazki	M	M	ML
Ain El-Tineh-Miniyeh	M	L	L	Assoun	M	L	ML	Bakhaaoun	M	ML	ML
Bchennata	M	L	ML	Bechehhara	ML	L	L	Beddawi	M	M	M
Behouaita	M	L	L	Beit El Fqss	M	L	L	Beit Haouik	M	ML	M
Beit Zoud	M	L	L	Bekaasafrine	M	L	M	Borj El Yahoudiyeh	M	M	M
Bqarsouna	M	L	L	Btermaz	M	L	L	Debaael	M	L	L
Deir Ammar	M	M	M	Deir Nbouh	M	ML	ML	Haouaret-Miniyeh	M	ML	ML
Haql el Azimeh	M	L	L	Harf El Siyad	M	L	L	Hazmiye-Miniyeh	M	L	L
Izal	M	ML	ML	Jarjour	ML	L	L	Jayroun	M	L	L
Kahf El-Malloul	M	L	L	Karm El-Moher	M	L	ML	Kfar Binine	M	L	L
Kfarchalane	M	ML	ML	Kfarhabou	M	M	M	Kharroub-Miniyeh	M	M	ML
Mazraat El-Kreme	M	L	L	Mazraat Ketrane	M	L	L	Merkebtta	M	M	M
Minyeh	MH	M	M	Mrah El Sfirat	M	L	L	Mrah Sraj	M	L	L
Mrebbine	M	L	ML	Nabi Youcheaa	M	M	M	Nemrine	M	L	L

Qarhaiya	M	ML	ML	Qarne	M	L	L	Qarsita	M	L	L
Qattineh-Miniyeh	M	L	L	Qemmamine	M	L	L	Qraine	M	L	L
Raouda-Aadoua	M	M	M	Rihaniyet-Miniyeh	M	M	M	Sfireh	M	L	L
Sir Ed-Danniyeh	M	L	L	Tarane	M	L	L	Terbol-Miniyeh	M	M	M
Zaghartaghriane	M	L	ML	Zouq Bhannine	M	M	M				

Nabatiye

Nabatiye

Municipality	31-Dec	01-Jan	02-Jan	Municipality	31-Dec	01-Jan	02-Jan	Municipality	31-Dec	01-Jan	02-Jan
Aabba	L	M	L	Aazzi	L	M	VL	Adchit El-Chqif	L	M	L
Ain Bou Swar	ML	ML	VL	Ain Kana	ML	ML	VL	Ali El-Taher	L	ML	VL
Ansar	L	M	VL	Arab Salim	L	ML	VL	Arnoun	L	ML	VL
Bfaroue	L	M	L	Breyqaah	L	M	L	Charqiyeh	L	M	L
Choukine	L	ML	VL	Deir El Zahrani	L	M	VL	Doueir El-Nabatiyeh	L	M	L
Habbouch El-Nabatiye	L	M	VL	Hamra El-Nabatiyeh	L	ML	VL	Harouf El-Nabatiyeh	L	M	VL
Hmaile	L	ML	VL	Houmin El Faouqa	L	M	VL	Houmin El Tahta	M	M	L
Jarjough	L	ML	VL	Jbaah El-Nabatiyeh	ML	L	VL	Jebchit	L	M	L
Kfar Djal El-Nabatiy	L	M	VL	Kfar Remmane	L	ML	VL	Kfar Sir	L	ML	L
Kfar Tebnit	L	M	VL	Kfarfila	ML	M	VL	Kfour El-Nabatieh	L	M	VL
Mayfadoun	L	ML	VL	Mazraat Bsaffour	L	M	L	Mazraat Chalbaal	L	ML	L
Mazraat Dmoul	L	M	L	Mazraat El Khreibeh	ML	M	VL	Mazraat El-Bayad El-	L	M	VL
Mazraat Kfarjaouz	L	M	VL	Mazraat Qalaat Meiss	L	ML	VL	Nabatiyeh El-Fawka	L	ML	VL
Nabatiyeh Et-Tahta	L	ML	VL	Namiriyeh	L	M	L	Qaaqaaiyet El Jisr	L	ML	VL
Qossaibeh El-Nabatiy	L	M	L	Roumine	ML	M	VL	Sarba El-Nabatieh	ML	ML	VL
Sir El-Gharbiyeh	L	M	VL	Toul	L	ML	VL	Yehmor El-Nabatiyeh	L	ML	VL
Zaoutar El Charkiyeh	L	ML	VL	Zaoutar El-Gharbiyeh	L	ML	VL	Zebdine El-Nabatiyeh	L	ML	VL
Zefta	L	M	L								

Hasbaiya

Municipality	31-Dec	01-Jan	02-Jan	Municipality	31-Dec	01-Jan	02-Jan	Municipality	31-Dec	01-Jan	02-Jan
Ain Jarfa	L	L	VL	Abou Qamha	L	ML	VL	Ain Qania	L	L	VL
Bourghos	L	ML	VL	Chebaa	L	L	VL	Chouaya Hasbaya	L	L	VL
Dellafeh	L	ML	VL	Fardiss Hasbaiya	L	ML	VL	Hasbaya	L	L	VL
Hbariyeh	L	L	VL	Kaoukaba Hasbaiya	L	M	VL	Kfar Chouba	L	L	VL
Kfar Hamam	L	L	VL	Kfeir El-Zait	L	L	VL	Khalwat Hasbaya	L	L	VL
Khreibet Hasbaiya	L	ML	VL	Majidiyeh Hasbaiya	L	ML	VL	Marj Ez-Zhour (Haouc	L	L	VL
Meri	L	ML	VL	Mimass	L	L	VL	Rachaiya El-Fokhar	L	ML	VL
Salaiyeb	L	M	VL								

Marjayoun

Municipality	31-Dec	01-Jan	02-Jan	Municipality	31-Dec	01-Jan	02-Jan	Municipality	31-Dec	01-Jan	02-Jan
Aalmane Marjaayoun	L	L	VL	Aamra	L	M	VL	Adayseh Marjaayoun	L	ML	VL
Adchit El-Koussair	L	ML	VL	Ain Aarab Marjaayoun	L	M	VL	Bani Haiyann	L	L	VL
Blatt Marjaayoun	L	M	VL	Blida	L	ML	VL	Borj El-Moulouk	L	ML	VL
Boueyda Marjaayoun	L	ML	VL	Deir Mimass	L	ML	VL	Deir Siriane	L	L	VL
Dibbine	L	M	VL	Ebel El Saqi	L	M	VL	Houla	L	ML	VL
Houra	L	ML	VL	Kfar Kila	L	ML	VL	Khiam Marjaayoun	L	M	VL

Klayaa	L	ML	VL	Majdel Selem	L	ML	VL	Marjaayoun	L	M	VL
Markaba	L	ML	VL	Mays El-Jabal	L	ML	VL	Mazraat Doumiat	L	M	VL
Mazraat Sarada	L	M	VL	Mhaibib	L	ML	VL	Qabrikha	L	L	VL
Qantara	L	L	VL	Rab El-Thalathine	L	ML	VL	Saouaneh Marjayoun	L	ML	VL
Talloussa	L	L	VL	Taybeh Matjaayoun	L	ML	VL	Touline	L	L	VL

Bent Jbail

Municipality	31-Dec	01-Jan	02-Jan	Municipality	31-Dec	01-Jan	02-Jan	Municipality	31-Dec	01-Jan	02-Jan
Ain-Ebel	ML	L	VL	Aitaroun	L	ML	VL	Aynata Bint Jbeil	L	ML	VL
Ayta El-Chaeb	ML	ML	VL	Ayta El-Jabal	ML	ML	VL	Beit Lif	ML	L	VL
Beit Yahoun	L	ML	VL	Bint Jbeil	L	ML	VL	Borj Qalaway	L	ML	VL
Braachit	L	ML	VL	Chakra	L	ML	VL	Debel	ML	ML	VL
Deir Antar	L	ML	VL	Froun	L	ML	VL	Ghandouriyeh Bint Jb	L	ML	VL
Hanine	ML	ML	VL	Hariss	ML	ML	VL	Hdatha	ML	ML	VL
Jmeymeh	L	ML	VL	Kafra Bint Jbeil	M	ML	VL	Kfar Dounine	L	ML	VL
Khirbet Selm	L	ML	VL	Kounine	L	ML	VL	Maroun El Ras	L	ML	VL
Qalaway	L	ML	VL	Qaouzah	ML	L	VL	Qatmoun	ML	ML	VL
Ramya Bint Jbeil	ML	L	VL	Rchaf	ML	L	VL	Rmeich	ML	ML	VL
Safad Al Battikh	L	ML	VL	Salhaneh	ML	L	VL	Serbine	M	ML	VL
Sultanieh Bint Jbeil	L	ML	VL	Tibnine	L	ML	VL	Tiri	L	L	VL
Yaroun	ML	ML	VL	Yater	M	ML	VL				

Mont Liban

Jbail

Municipality	31-Dec	01-Jan	02-Jan	Municipality	31-Dec	01-Jan	02-Jan	Municipality	31-Dec	01-Jan	02-Jan
Aabeydat	M	L	VL	Aalita	M	L	VL	Aamchit	M	M	L
Aarab El-Lahib	M	VL	VL	Aarasta	ML	VL	VL	Adonis Jbeil	L	L	VL
Afqa Jbeil	ML	VL	VL	Ain El Delbeh Jbeil	M	L	VL	Ain El-Ghouayba	M	VL	VL
Ain Jrain	M	L	VL	Ain Kfah	M	ML	VL	Almat El Chemaliyat	M	L	VL
Almat El-Jenoubiya	M	L	VL	Aqoura	ML	L	VL	Bayzoun	M	L	VL
Bchille Jbeil	ML	L	VL	Bechtlida	ML	L	VL	Behdaydat	M	ML	VL
Beit Habbaq	M	ML	VL	Bejjeh	M	ML	VL	Bekhaaz	M	L	VL
Berbara Jbeil	M	ML	VL	Bintael	M	L	VL	Birket Hjoula	M	L	VL
Blatt Jbeil	M	ML	L	Boulhos	M	L	VL	Breyj Jbeil	M	L	VL
Chamat	M	M	VL	Chikhane	M	ML	VL	Chmout	M	L	VL
Eddeh Jbeil	M	ML	L	Ehmej	M	L	VL	Fatre	ML	L	VL
Ferhet	M	ML	VL	Fghal	M	L	VL	Frat	M	L	VL
Ghabat	M	VL	VL	Ghalboun	M	ML	VL	Gharzouz	M	ML	VL
Ghofrine	M	ML	VL	Habil	M	L	VL	Halate	M	ML	L
Haqel	M	L	VL	Hbaline	M	ML	VL	Hboub	M	ML	L
Hdeine	M	VL	VL	Hema Er-Rehban	M	L	VL	Hema Mar Maroun Aann	ML	VL	VL
Hjoula	M	L	VL	Hosrayel	M	ML	VL	Hsarat	M	ML	VL
Hsoun	M	L	L	Jaj	M	L	VL	Janne	M	VL	VL
Jbeil	M	M	L	Jeddeyel Jbeil	M	M	VL	Jlisse	M	L	VL
Jouret El-Qattine	M	L	VL	Kfar Baal Annaya	M	L	VL	Kfar Kidde	M	L	VL
Kfar Kouas	M	L	VL	Kfar Mashoun	M	M	L	Kfoun	M	L	VL

Kharbe Jbeil	M	ML	L	Laqlouq	M	VL	VL	Lassa	M	VL	VL
Lehfed	M	L	VL	Maad	M	ML	VL	Mar Sarkis	M	VL	VL
Mastita	M	M	L	Mayfouq	M	L	VL	Mazraat El Siyad	M	VL	VL
Mazraat El-Maaden	M	L	VL	Mechane	M	L	VL	Mechmech Jbeil	M	L	VL
Mehrin	M	ML	L	Mejdel El-Akoura	ML	VL	VL	Mghayreh Jbeil	M	VL	VL
Mounsef	M	ML	VL	Nahr Ibrahim	M	M	L	Qahmez	M	L	VL
Qartaba	M	VL	VL	Qartaboun	M	M	L	Qattara Jbeil	M	L	VL
Qorqraya	ML	L	VL	Ramout	M	ML	VL	Ras Osta	M	L	VL
Rihane Jbeil	M	M	VL	Sakiet El-Khayt	M	L	VL	Saqi Richmaya	M	L	VL
Sebrine	M	L	VL	Seraita	M	VL	VL	Souane Jbeil	M	L	VL
Tadmor	M	VL	VL	Tartej	ML	L	VL	Torzaiya	M	L	VL
Yanouh Jbeil	M	VL	VL	Zibidine Jbeil	M	L	VL				

El Metn

Municipality	31-Dec	01-Jan	02-Jan	Municipality	31-Dec	01-Jan	02-Jan	Municipality	31-Dec	01-Jan	02-Jan
Aain El-Qabu	ML	VL	VL	Aain El-Qach	L	L	L	Aain El-Teffaha	L	L	L
Aain el-Safssaf El-M	L	L	VL	Abou Mizane	L	L	L	Ain Aar	ML	ML	L
Ain Alaq	L	L	VL	Ain El-Kharroube	L	ML	L	Ain El-Sendiane	L	L	VL
Ain El-Zeitoune	M	VL	VL	Ain Saadeh	M	ML	L	Aintoura El-Matn	L	L	VL
Amaret Chalhoub	M	M	L	Antelias	M	M	L	Atchaneh	L	L	VL
Ayroun	L	L	L	Baabdat	L	L	VL	Baouchariyeh	M	M	L
Baskinta	L	VL	VL	Beit Chabab	L	L	VL	Beit El-Charar	M	M	L
Beit El-Kekko	ML	M	L	Beit Mery	ML	L	VL	Bhersaf	L	L	VL
Bikfaya	L	L	L	Biyakout	M	M	L	Bnabil	ML	L	VL
Bourj Hammoud	M	M	L	Bqennaya	M	ML	L	Broummana El-Matn	ML	L	VL
Bsalim	ML	L	L	Bsifrine	ML	L	VL	Bteghrine	L	VL	VL
Chaouiye	L	L	L	Chouaya El-Matn	L	ML	L	Choueir	L	L	VL
Chrine	L	L	VL	Dahr El Sawan El-Mat	L	L	VL	Daychouniyeh	M	M	L
Dbayeh	M	M	L	Deir Chamra	L	L	VL	Deir Mar Abda el Mch	ML	L	VL
Deir Mar Roukouz	M	M	L	Deir Tamiche	M	L	L	Dik El-Mehdi	M	ML	L
Dikwaneh	M	M	L	Douar El-Matn	L	L	VL	Fanar	M	M	L
Fraike	L	L	VL	Haret El-Ballaneh	M	ML	L	Hbous	ML	ML	L
Himlaya	L	L	L	Jal El Did	M	M	L	Jdeideh El-Metn	M	M	L
Jouar El-Matn	L	L	VL	Jouret El-Ballout	ML	L	VL	Kaaqour	L	L	VL
Kfar Aaqab	L	VL	VL	Kfertay El-Matn	ML	VL	VL	Khenchara	L	L	VL
Khillet El-Mtain	L	L	VL	Konnabat Broummana	ML	L	VL	Konnabat Salima	ML	VL	VL
Machraah El-Matn	L	VL	VL	Majdel Tarchich	L	L	VL	Majzoub	M	ML	L
Mansouriyeh El-Metn	M	M	L	Mar Boutros Karm Et-	L	L	VL	Mar Chaya et Mzekke	ML	L	VL
Mar Moussa Ed-Douar	L	L	VL	Marjaba	L	VL	VL	Masqa	ML	L	VL
Mayasse	L	L	L	Mazraat Deir Aoukar	M	M	L	Mazraat El-Hadirat	M	ML	L
Mazraat Yachouh	ML	M	L	Mchikha	L	L	L	Menqlet Mezher	M	M	L
Mhaydseh Matn	L	L	L	Mkalles	M	M	L	Mrouj	L	VL	VL
Mtain	L	L	VL	Mtayleb	ML	ML	L	Nabay	ML	L	VL
Naccache	M	ML	L	Ouadi Chahine	L	L	VL	Ouadi El-Karm El-Mat	L	VL	VL
Ouata El-Mrouj	ML	VL	L	Ouyoun El-Matn	L	L	VL	Qornet Chehwan	ML	ML	L
Qornet El-Hamra	ML	L	VL	Roumieh	ML	L	VL	Sfeilet Bikfaya	L	L	VL
Sinn El-Fil	M	M	L	Zabbougha	L	VL	VL	Zalqa	M	M	L

Zarouon	L	L	VL	Zekrite	M	L	VL	Zighrine El-Matn	L	L	L
Zouk El-Khrab	M	M	L								

Chouf

Municipality	31-Dec	01-Jan	02-Jan	Municipality	31-Dec	01-Jan	02-Jan	Municipality	31-Dec	01-Jan	02-Jan
Aalmane El-Chouf	M	M	L	Aammq El-Chouf	M	L	VL	Ain Ouzein	M	L	VL
Ain Qani	M	L	VL	Ain Zhalta	ML	L	VL	Ainbal	ML	L	VL
Amatour	ML	L	VL	Anout	M	ML	VL	Atrine	ML	ML	VL
Baadarane	M	L	VL	Baaqline	ML	ML	VL	Baasir	M	M	VL
Barja	M	M	VL	Barouk	L	L	VL	Bater	ML	L	VL
Batloun	M	L	VL	Bayqoun	M	ML	VL	Bchetfine	ML	L	VL
Beiteddine	ML	L	VL	Benouati Ech-Chouf	ML	L	VL	Berjein	M	ML	VL
Bireh et Mtalleh	M	L	VL	Biret El-Chouf	M	L	VL	Bkechtine Ouel Mchei	M	L	VL
Bkifa El-Chouf	M	ML	VL	Botme	M	L	VL	Bqaiaa Ech-Chouf	M	L	VL
Bsaba El-Chouf	ML	ML	VL	Chammis El-Chouf	M	M	L	Chehim	M	ML	VL
Chemaarine	M	L	VL	Chourit	ML	L	VL	Daher El-Chouf	M	L	VL
Dalhoun	M	ML	VL	Damour	M	M	VL	Daraya El-Chouf	M	L	VL
Deir El-Moukhalles	ML	L	VL	Deir Baba	ML	L	VL	Deir Dourit	ML	ML	VL
Deir El-Qamar	ML	ML	VL	Deir Kouche	M	L	VL	Dibbieh	M	L	VL
Dmit	M	ML	VL	Fouara Jaafar	M	L	VL	Fraidis El-Chouf	ML	L	VL
Ghabet Jaafar	ML	ML	VL	Gharife	M	L	VL	Haret Jandal	L	L	VL
Hasrout	M	ML	VL	Jadra	M	M	L	Jahlieh	ML	L	VL
Jbeih El-Chouf	ML	L	VL	Jdeidet El-Chouf	M	L	VL	Jiyeh	M	M	VL
Jleilyeh	M	ML	VL	Jmailiyeh	M	M	L	Joun	M	ML	L
Kahlounie El-Chouf	M	ML	VL	Ketermaya	M	M	L	Kfar Faqoud	ML	L	VL
Kfar Hamal	ML	M	VL	Kfar Him	ML	ML	VL	Kfar Katra	M	L	VL
Kfar Niss	ML	L	VL	Kfar hay	M	L	VL	Kfarnabrakh	M	L	VL
Khirbet Bisri	ML	L	VL	Knayse El-Chouf	M	L	VL	Maaniyeh	M	M	L
Maasser Beiteddine	M	L	VL	Maasser El-Chouf	L	L	VL	Majdalouna	M	ML	VL
Majdel El-Meouch	ML	L	VL	Mazboud	M	M	VL	Mazmoura	M	ML	VL
Mazraat El Chouf	M	L	VL	Mazraat El Daher	M	L	VL	Mazraat El-Douair	M	L	VL
Mechref	M	ML	VL	Mghairie	M	M	L	Mghayrie El-Chouf	M	L	VL
Moukhtara	ML	L	VL	Mrusti	ML	L	VL	Mtolle	M	ML	VL
Naameh	M	M	VL	Niha El-Chouf	L	L	VL	Ouadi Abou Youssef	M	L	VL
Ouadi Ed-Deir	M	ML	VL	Ouadi El-Sit	ML	L	VL	Ouadi bnehlay	ML	L	VL
Qraibeh	M	L	VL	Qreiaa	M	L	VL	Rmayle El-Chouf	M	M	L
Semqaniyeh	M	ML	VL	Sibline	M	M	L	Sirjbeil	M	ML	VL
Warhanieh	ML	L	VL	Werdaniyeh	M	M	L	Zaarourieh	M	ML	VL

Baabda

Municipality	31-Dec	01-Jan	02-Jan	Municipality	31-Dec	01-Jan	02-Jan	Municipality	31-Dec	01-Jan	02-Jan
Abadiyeh	ML	L	L	Ain Mouaffaq	M	L	L	Araiya	M	L	L
Arbaniyeh	L	L	VL	Arsoun	L	L	VL	Baabda	M	M	L
Baalchmey	M	ML	L	Bmaryam	ML	L	VL	Bourj El-Brajneh	M	M	L
Boutchay	M	M	L	Bsaba Baabda	M	M	L	Btekhney	ML	L	VL
Btibyat	L	L	VL	Bzebdine	L	L	VL	Chbeniyeh	ML	L	L
Chiyah	M	M	L	Chmeisset Baabda	ML	L	VL	Chouit	ML	L	VL
Deir El-harf	L	L	VL	Deir Khouna	ML	L	VL	Dlaybeh	L	L	VL

Falougha	L	L	VL	Furn El-Chebbak	M	M	L	Hadath Beyrouth	M	M	L
Halaliyeh Baabda	ML	L	VL	Hammana	L	L	L	Haret El Sett	M	M	L
Haret Hamze	ML	L	L	Haret Hreik	M	M	L	Hasbaiya El-Metn	L	L	VL
Jouar El-Hoz	L	VL	VL	Jouret Arsoun	L	L	VL	Kfar Chima	M	M	L
Kfar Selouane	L	VL	VL	Khalouat Baabda	L	L	L	Kneisset Baabda	L	L	VL
Laylakeh	M	M	L	Louayzeh Baabda	M	M	L	Merdache	M	M	L
Mzairaa Baabda	M	L	VL	Ouadi Chahrour El Ol	M	M	L	Ouadi Chahrour El So	M	M	L
Qalaa Baabda	ML	L	VL	Qhraybe Baabda	ML	L	L	Qobbayaa	ML	L	L
Qornayel	L	L	VL	Qortada	L	VL	VL	Qrayeh Baabda	L	L	L
Qsaibeh Baabda	ML	L	VL	Qtale Baabda	ML	L	VL	Ras El Metn	L	L	VL
Ras El-Haref	ML	L	L	Rouayset El-Ballout	ML	L	VL	Salima Baabda	L	L	VL
Tahouitat El Ghadir	M	M	L	Tarchich	L	L	VL	Zandouqa	ML	VL	VL

Aley

Municipality	31-Dec	01-Jan	02-Jan	Municipality	31-Dec	01-Jan	02-Jan	Municipality	31-Dec	01-Jan	02-Jan
Abey	M	ML	VL	Aghmid	M	L	L	Ain Dara	L	L	L
Ain Drafil	M	M	L	Ain El Halazoun	M	L	L	Ain El-Rmmaneh	ML	L	VL
Ain Jedideh	M	ML	L	Ain Ksour	ML	ML	VL	Ain Onoub	M	M	L
Ain Traz	ML	L	VL	Ainab	ML	L	L	Aley	M	ML	L
Aramoun	M	M	L	Aytat	M	M	L	Azouniyeh	ML	L	L
Baawerta	M	M	VL	Badghan Oua Wadi Bad	M	L	L	Bassatine	ML	ML	L
Bayssour	M	ML	L	Bchamoun	M	M	L	Bdadoun	M	M	L
Behouara	ML	ML	L	Bennay	M	ML	VL	Bhamdoun El-Dayaa	M	ML	L
Bhamdoun El-Mhatta	M	ML	L	Bkhechthey	ML	ML	L	Bleibel	M	M	L
Bmakine	M	M	L	Bmehrday	L	L	VL	Bouzrid	L	L	VL
Bserrine	M	ML	L	Bsous	ML	ML	L	Btalloun	M	M	L
Btater	M	ML	L	Chanay	ML	ML	L	Charoun	ML	L	L
Chartoun	ML	L	VL	Chemlane	ML	M	L	Choueifat El-Aamrous	M	M	L
Choueifat El-Oumara	M	M	L	Choueifat El-Quoubbe	M	M	L	Dakkoun	M	M	VL
Deir Qoubel	M	M	L	Dfoun	M	M	L	Douair El Remmaneh	ML	L	L
Ghaboun	ML	ML	L	Habramoun	ML	L	L	Homs Oua Hama	M	L	L
Houmal	M	M	L	Jisr El Qadi	M	ML	VL	Kehaleh	ML	ML	L
Keyfoun	M	M	L	Kfar Aamey	ML	L	L	Kommatyeh	M	M	L
Maasrati	M	L	VL	Majdel Baana	M	L	L	Mansourieh et Ain El	M	M	L
Mazraat El-Nahr	M	L	L	Mchakhte	ML	L	L	Mecherfeh	ML	L	L
Mejdaya	M	ML	L	Mrayjat	ML	L	VL	Ramliyah	ML	L	VL
Rechmaya	M	L	VL	Rejmeh	M	ML	L	Remhala	M	ML	L
Rouaysset El Neemane	ML	L	L	Saoufar	ML	L	L	Selfaya	ML	L	VL
Sirhmoul	M	ML	L	Souq El Ghareb	M	M	L	Taazanieh	M	M	L

Kesrouane

Municipality	31-Dec	01-Jan	02-Jan	Municipality	31-Dec	01-Jan	02-Jan	Municipality	31-Dec	01-Jan	02-Jan
Achkout	L	L	VL	Adma Oua Dafneh	M	ML	L	Ain Ed-Delbe Kesroua	ML	L	VL
Ain El-Rihane	M	L	VL	Aintoura Kesrouane	M	ML	L	Ajaltoun	L	L	VL
Akaybeh Kesrouane	M	M	L	Aramoun Kesrouane	L	L	VL	Azra ouel Ozor	L	L	VL
Ballouneh	L	L	VL	Batha	L	L	VL	Bekaatat Achkout	ML	L	L
Bekaatat Kanaan	ML	VL	VL	Bizhel	L	L	VL	Bouar	M	ML	L
Bqaatouta	ML	VL	VL	Bqaq Ed-Dine	M	ML	L	Bzommar	ML	L	L

Chahtoul	ML	L	VL	Chnaniir	ML	L	VL	Chouan	ML	L	VL
Daraya Kesrouane	L	L	VL	Darououn	ML	L	VL	Deir Baqlouch	ML	L	VL
Dlebta	L	L	VL	Eghbeh	L	VL	VL	Faraya	ML	L	VL
Fatka	ML	L	L	Feytroun	ML	L	VL	Ghazir	ML	L	L
Ghbaleh Kesrouane	L	L	VL	Ghedrass	L	L	VL	Ghosta	ML	L	VL
Ghyneh	ML	L	L	Harharaya w Kattine	L	L	VL	Harissa Kesrouane	ML	L	VL
Hayata	L	L	VL	Hosein	ML	L	VL	Hrajel	M	L	VL
Jdeideh Ghazir	L	L	VL	Jeita	ML	L	L	Jounieh Ghadir	M	ML	L
Jounieh Haret Sakhr	M	M	L	Jounieh Salel Alma	M	ML	L	Jounieh Sarba	M	M	L
Jouret Bedrane	ML	L	VL	Jouret Mhad	M	L	VL	Jouret Termos	ML	ML	L
Kfar Debiane	ML	VL	VL	Kfar Tay Kesrouane	ML	VL	VL	Kfar Yassine	M	M	L
Kfour Kesrouane	L	L	L	Kharayeb Nahr Ibrahi	M	L	VL	Klayaat Kesrouane	L	L	VL
Maarab	L	L	VL	Maaysra Kesrouane	L	L	VL	Mayrouba	M	L	VL
Mazraat Er-Ras	M	ML	L	Mazraat Mrah El-Mir	L	L	VL	Mchaa El Ftouh	ML	L	VL
Mchaa Faraya	M	L	VL	Mchaa Kfar Dibiane	L	L	VL	Mghaer	ML	L	VL
Mradiyah	L	L	VL	Nahr Ed-Dahab	M	L	VL	Nammoura Kesrouane	L	L	VL
Ouata El Jaouz	M	L	VL	Ouata Sillam	M	M	L	Raachine	ML	L	VL
Rayfoun	ML	L	VL	Safra Kesrouane	M	M	L	Shayle Kesrouane	ML	L	VL
Tabarja	M	ML	L	Yahchouch	M	L	VL	Zaaytreh	ML	L	VL
Zeytoun	ML	ML	L	Zouk Mikael	M	M	L	Zouk Mosbeh	M	M	L

Baalbek_Hermel

Baalbek

Municipality	31-Dec	01-Jan	02-Jan	Municipality	31-Dec	01-Jan	02-Jan	Municipality	31-Dec	01-Jan	02-Jan
Aadous	M	ML	VL	Aamchki	M	L	VL	Aarsal	M	M	L
Ain Baalbek	M	M	L	Ain Bourday	M	L	VL	Ain El-Benye	ML	L	VL
Ain El-Jaouz Baalbek	M	L	VL	Ain El-Siya Chadoura	M	L	VL	Al Khodr Baalbek	L	ML	L
Al Nabi Chit	L	L	VL	Aynata Baalbek	L	L	VL	Baalbek	M	L	VL
Bachwat	L	L	VL	Barqa	L	L	VL	Bednayel Baalbak	M	L	VL
Beit Chama	ML	ML	VL	Bijjaje	M	M	L	Bouday	L	L	VL
Brital	ML	L	L	Btadi	L	L	VL	Chaat	M	ML	L
Chaibe	ML	L	VL	Chlifa	L	ML	VL	Chmestar	ML	ML	VL
Dar El-Oussa	L	L	VL	Deir El-Ahmar	L	ML	VL	Deir Mar Maroun Baal	M	M	ML
Douris	M	ML	VL	Fakiha	M	M	L	Hadath Baalbek	L	ML	VL
Ham	M	VL	VL	Haour Taala	ML	L	L	Hizzine	L	ML	VL
Hlebta	M	L	L	Hosh Barada	ML	ML	VL	Hosh El Dahab	M	ML	VL
Hosh El Snid	L	ML	VL	Hosh El-Nabi	L	ML	VL	Hosh El-Rafiq	L	ML	VL
Hosh Tal Safiya	M	ML	VL	Hrebta	M	ML	L	laat	M	ML	VL
Jebaa	ML	L	VL	Jenta	L	L	VL	Kfar Dabach	L	ML	VL
Kfar Dane	L	ML	VL	Khraibeh El-Hermel	M	M	L	Khreibet Baalbek	ML	L	VL
Kneisset Baalbek	ML	ML	VL	Labueh	M	M	L	Maarboun	ML	L	VL
Majdaloun	ML	ML	VL	Maqneh	M	ML	VL	Mazraat Beit Mcheik	ML	L	VL
Misraya	L	ML	VL	Moqraq	M	M	L	Nabha El-Damdoum	M	L	L
Nabi Chbay	ML	L	VL	Nabi Osman	M	M	L	Nahleh baalbek	M	ML	L
Ouadi El-Oss	M	L	L	Qaa Baayoun	M	M	L	Qaa Jouar Maqiye	M	M	ML
Qaa Ouadi El-Khanzir	M	M	ML	Qah Baalbek	M	M	ML	Qarha Baalbek	M	L	VL

Qsarnaba	ML	ML	VL	Ram Baalbek	ML	L	VL	Ras Baalbek El Sahl	M	M	ML
Ras Baalbek El-Charq	M	M	L	Riha	M	L	VL	Saaide	L	M	VL
Sbouba	M	M	L	Seriine El-Tahta	L	L	VL	Slouqi	M	L	VL
Taiba Baalbek	ML	ML	L	Talia	L	ML	VL	Taraiya	ML	L	VL
Temnin El Fawqa	ML	ML	VL	Temnin El-Tahta	L	L	VL	Tfail	M	L	L
Yahfoufa	L	ML	VL	Yammouneh	L	L	VL	Younine	M	ML	L
Zboud	M	M	L								

Hermel

Municipality	31-Dec	01-Jan	02-Jan	Municipality	31-Dec	01-Jan	02-Jan	Municipality	31-Dec	01-Jan	02-Jan
Charbine El-Hermel	ML	L	L	Hermel Jbab	M	L	ML	Hermel	M	M	ML
Maaysra El-Hermel	M	M	L	Michaa Mrajhine	M	L	ML	Ouadi Faara	M	ML	L
Ras Baalbek - Ouadi	M	M	ML	Ras Baalbek El Gharb	M	M	ML	Zighrine	ML	ML	L

Akkar

Akkar

Municipality	31-Dec	01-Jan	02-Jan	Municipality	31-Dec	01-Jan	02-Jan	Municipality	31-Dec	01-Jan	02-Jan
Aain Tinta	M	M	M	Aaiyat	M	M	M	Aakkar El-Aatiqa	M	ML	L
Aamar Akkar	M	M	M	Aamar El Baykat	M	M	M	Aamayer	M	M	L
Aamriyet Akkar	M	M	M	Aandqet	M	ML	L	Aarmeh	M	ML	ML
Aarqa	M	M	M	Aawaynat	M	M	L	Aayoun Akkar	M	M	M
Abboudiye	M	M	M	Ain El-Zeit	M	M	M	Ain Yaaqoub	M	ML	ML
Akroum	M	ML	L	Aridet Cheikh Zennad	M	M	ML	Baldeh w Mazraat Bal	M	M	M
Barcha	M	M	M	Bardeh	M	M	ML	Bebnine	M	M	M
Beino	M	M	M	Beit Ayoub	M	M	M	Beit El-Haouch	M	M	M
Beit Mellat	M	M	M	Beit Younes	M	ML	ML	Berbara Akkar	M	M	M
Berqayel	M	M	M	Bezgina	M	L	L	Bireh Akkar	M	M	M
Borj	M	M	M	Bqerezla	M	M	M	Bzal	M	ML	ML
Chane	M	L	ML	Chaqdouf	M	M	M	Charbila	M	M	M
Cheikh Mohammad	M	M	M	Cheikh Taba Es-Sahl	M	M	M	Cheikh Taba	M	M	M
Cheikh Zennad	M	M	ML	Cheikhlar	M	M	L	Chir Hmairine	M	M	M
Daghle	M	M	M	Dahr Laissine	M	M	M	Darine	M	M	M
Dawra	M	M	ML	Dawsa w Baghdadi	M	M	M	Dayret Nahr El-Kabir	M	M	ML
Deir Dalloum	M	M	M	Deir Jennine	M	M	M	Denbou	M	ML	ML
Dibbbiyeh	M	M	M	Douair Aadwiyeh	M	M	M	Fassikine	M	M	M
Fnaydek	M	L	ML	Fraydes Akkar	M	M	M	Ghazayle	M	M	M
Habchit	M	L	L	Hakour	M	M	M	Halba	M	M	M
Haouchab	M	M	M	Hayssat	M	M	M	Haytla	M	M	M
Hayzouq	M	M	M	Hedd	M	M	M	Hmaira Akkar	M	M	M
Hmaiss Akkar	M	M	M	Hnaider	M	M	ML	Hokr Ed-Dahri	M	M	ML
Hokr Etti	M	M	M	Hokr Jouret Srar	M	M	M	Houaich	M	ML	ML
Hrar	M	ML	ML	Idbil	M	M	M	Ilal	M	M	M
Janine	M	M	M	Jdeidet El-Joumeh	M	M	M	Jdeidet El-Kaiteh	M	M	M
Jebroyel	M	M	M	Kafr	M	ML	VL	Kafr	M	M	M
Karm Asfour	M	M	M	Kfar Melki Akkar	M	M	M	Kfar Noun	M	M	ML
Kfarharra	M	M	M	Khalsa	M	M	L	Kharnoubet Akkar	M	M	M

Khirbet Daoud Aakkar	M	M	M	Khirbet El Remmane	M	M	L	Khirbet Shar	M	M	M
Khoreybet El-Jindi	M	M	M	Khreibet Aakkar	M	M	M	Kneisset Aakkar	M	M	ML
Kneisset Hnaider	M	M	ML	Knisse	M	M	M	Kroum El-Aarab	M	M	M
Kwachra	M	M	M	Kweykhat	M	M	M	Machta Hammoud	M	M	ML
Majdala	M	M	M	Majdel Akkar	M	M	M	Mar Touma	M	M	M
Marlaya Melhem	M	M	M	Mashha	M	M	M	Massoudiye	M	M	M
Mazraat Beit Ghattas	M	M	M	Mazraat En-Nahriye	M	M	L	Mechmech	M	L	L
Memneh	M	L	L	Mhammara	M	M	M	Mighraq Aakkar	M	M	ML
Minyara	M	M	M	Moqayteh	M	M	M	Mounjez	M	M	ML
Msalla	M	M	M	Mzeihmeh	M	M	M	Nfaiseh	M	M	M
Noura Et-Tahta	M	M	M	Ouadi El-Haour	M	M	M	Ouadi El-Jamous	M	M	M
Ouyoun El-Ghizlane	M	M	M	Qaabarine	M	M	M	Qabaait	M	ML	ML
Qachlaq	M	M	M	Qantara Aakkar	M	M	M	Qarha Aakkar	M	M	ML
Qarqaf	M	M	M	Qboula	M	M	M	Qleiaat Aakkar	M	M	ML
Qloud El-Baqie	M	M	M	Qobaiyat Aakkar	M	ML	L	Qobbat Chamrat	M	M	M
Qorayat	M	ML	ML	Qornet Aakkar	M	M	M	Qsair Aakkar	M	M	M
Rahbe	M	M	M	Rihaniyet Aakkar	M	M	M	Rmah	M	M	L
Rmoul	M	M	M	Saadine	M	M	M	Sadaqa	M	M	M
Saidnaya	M	M	M	Sammouniye	M	M	M	Sayssouq	M	M	M
Semmaqiye	M	M	ML	Semmaqli	M	M	M	Sfinet El-Dreib	M	M	M
Sfinet El-Qaitaa	M	ML	ML	Sindyanet Zeidane	M	M	M	Souaisset Aakkar	M	M	M
Srar	M	M	M	Tal Abbas El Gharby	M	M	M	Tal Abbas El-Charqy	M	M	M
Tal Biret	M	M	M	Tal Hmayra	M	M	M	Tal Maayan Tal Kiri	M	M	ML
Tal Sibel	M	M	M	Tallet Chattaha	M	M	M	Tikrit	M	M	M
Tleil	M	M	M	Tshea	M	L	L	Zawarib	M	M	M
Zouq El Hosniyeh	M	M	M	Zouq El-Haddara	M	M	M	Zouq El-Hbalsa	M	M	M
Zouq El-Moqachrine	M	M	M								

Sud

Sour

Municipality	31-Dec	01-Jan	02-Jan	Municipality	31-Dec	01-Jan	02-Jan	Municipality	31-Dec	01-Jan	02-Jan
Aaiyeh	M	M	VL	Aalma El-Chaab	M	L	VL	Aaytit	M	M	L
Abbassiyeh Sour	ML	M	L	Abou Chech	M	ML	L	Ain Abou Abdallah	L	M	L
Ain Baal	M	M	L	Arzoun	L	ML	L	Aziyeh	M	L	L
Baflaya	ML	M	VL	Barich	ML	M	L	Batouliyah	M	M	L
Bayad	M	M	VL	Bazouriyeh	M	M	L	Bediass	L	M	VL
Bestiyat	L	M	VL	Borj El Chemali	M	M	L	Borj En-Naqoura	M	M	L
Borj Rahhal	ML	M	L	Boustane	M	ML	VL	Btaychiyah	M	ML	L
Chaaitiye	M	M	L	Chameh	M	L	L	Chehabiye	ML	ML	VL
Chehour	L	L	VL	Chihine	M	ML	VL	Debaal Sour	M	M	L
Deir Amess	M	ML	VL	Deir Kifa	L	ML	VL	Deir Qanoun El-Ain	M	M	L
Deir Qanoun El-Naher	L	M	VL	Derdghaiya	L	ML	VL	Dhayra	M	ML	L
Halloussiyeh	L	M	VL	Hamoul	ML	L	VL	Hanaouey	M	M	L
Henniye	M	M	L	Hmairi Sour	L	M	VL	Iskandarouna Sour	M	L	VL
Jbal El Botom	M	ML	VL	Jebbin	M	ML	L	Jennata	L	M	VL
Jijim	M	L	VL	Jouaiya	M	M	L	Kneisset Sour	M	M	L

Maarake	ML	M	VL	Maaroub	L	M	VL	Majadel	M	M	VL
Majdalzoun	M	ML	L	Mansouri Sour	M	M	L	Marnba	L	L	VL
Marouahine	ML	L	VL	Mazraat El-Zalloutiy	M	M	L	Mazraat Mechref	M	M	VL
Mazraat Tayr Semhat	L	L	VL	Mheilib	L	M	L	Neffakhiyeh	L	ML	VL
Niha Sour	L	ML	VL	Ouadi Jilo	M	M	L	Qana	M	M	VL
Qolaileh Sour	M	M	L	Rechknany	M	ML	VL	Rmadiyah	M	M	L
Selha Sour	L	ML	VL	Siddiqine	M	M	VL	Sour	M	M	L
Srifa	L	ML	VL	Tayr Debbe	ML	M	L	Tayr Felsay	L	M	VL
Tayr Harfa	M	ML	L	Touayri	L	L	VL	Toura	L	M	VL
Yanouh Sour	M	M	L	Yarine	M	ML	L	Zebqine	ML	L	VL

Saida

Municipality	31-Dec	01-Jan	02-Jan	Municipality	31-Dec	01-Jan	02-Jan	Municipality	31-Dec	01-Jan	02-Jan
Aanqoun	M	M	L	Aaqtanit	M	M	L	Aarab Ej-Jall	ML	M	VL
Aarab Tabbaya	M	M	VL	Abra Saida	M	M	L	Adloun	M	M	VL
Adousiyeh	M	M	L	Ain-El-Deleb	M	M	L	Arzai	L	M	VL
Babliyah	ML	M	L	Barty	ML	ML	VL	Bissariyeh	M	M	L
Bnaafoul	M	M	L	Bqosta	M	M	L	Bramiyeh	M	M	L
Daoudiyeh	ML	M	L	Dareb El-Sim	M	M	L	Erkay	M	M	L
Ghassanieh	ML	M	L	Ghazieh	M	M	L	Hajjeh	M	M	L
Haret Saida	M	M	L	Hartiyeh	L	M	VL	Hlaliye Saida	M	M	L
Insariyat	M	M	VL	Jazira Saida	ML	M	L	Kafar Bit	ML	M	VL
Kaoutariyet El-Siyad	L	M	L	Kfar Chellal	ML	M	VL	Kfar Hatta Saida	ML	M	VL
Kfar Milke Saida	ML	M	VL	Khartoum	L	M	L	Khaziz	M	M	L
Khirbet Ed-Douair Sa	ML	M	L	Khirbet El-Bassal	M	M	L	Khrayeb Saida	L	M	VL
Loubieh	M	M	L	Maghdouche	M	M	L	Majdelyoun	M	M	L
Matariyet El-Choumar	L	M	VL	Matayriyeh	M	M	L	Mazraat 'Mseileh	M	M	L
Mazraat 'Snaiber	ML	M	L	Mazraat Aarab Soukka	ML	M	VL	Mazraat Deir Taqla	L	M	L
Mazraat El Yahoudiye	L	M	VL	Mazraat El-Housseini	M	M	L	Mazraat El-Mhaydaleh	L	M	VL
Mazraat El-Ouasta	L	M	VL	Mazraat Jamjim	L	M	VL	Mazraat Kaoutariyet	L	M	VL
Mazraat Kfar Badda	L	M	VL	Mazraat Oussamiyat	L	M	VL	Mazraat Sari	L	M	VL
Mazraat Sinai	L	M	VL	Meemariyeh	M	M	L	Merouaniyeh	ML	M	L
Miyeh ou Miyeh	M	M	L	Najjariyeh	M	M	L	Qaaqaiyat El-Snaouba	ML	M	L
Qnarit	M	M	L	Qraiye Saida	M	M	L	Saida Ed-Dekermane	M	M	L
Saida El-Oustani	M	M	L	Saida El-Qadimeh	M	M	L	Saida Kefraya	M	M	L
Saksakiyeh	M	M	VL	Salhie Saida	M	M	L	Sarafand	M	M	L
Sfenta	ML	ML	VL	Tafahta	L	M	L	Tanbourit	M	M	L
Tebna	ML	M	L	Zaghdraiya	M	M	L	Zeita	M	M	L
Zrariyeh	L	M	VL								

Jezzine

Municipality	31-Dec	01-Jan	02-Jan	Municipality	31-Dec	01-Jan	02-Jan	Municipality	31-Dec	01-Jan	02-Jan
Ain El-Mir (El Estab	M	M	L	Anane	M	L	VL	Aramta	L	ML	VL
Ariya	L	L	VL	Aychiyeh	L	L	VL	Azour	ML	L	VL
Baba	M	L	VL	Bayssour Jezzine	M	M	L	Benoueteh Jezzine	M	L	VL
Bhannine	L	L	VL	Bisri	ML	L	VL	Bkassine	ML	L	VL
Bouslaya	ML	L	VL	Btedine El-Leqech	M	L	VL	Chbail	VL	L	VL
Choualiq Jezzine	M	M	L	Dahr Ed-Deir	M	L	VL	Deir El Qattine	M	L	VL

Demachqiyeh	L	M	VL	Ghabbatiyeh	M	L	VL	Harf Jezzine	M	L	VL
Hassaniyeh	ML	M	VL	Haytouleh	ML	ML	VL	Haytura	ML	L	VL
Hidab	ML	L	VL	Homsiyeh	ML	L	VL	Jabal Toura	L	L	VL
Jarmaq	L	ML	VL	Jensnaya	M	M	L	Jernaya	ML	M	VL
Jezzine	ML	L	VL	Karkha	ML	ML	L	Kfar Falous	M	M	L
Kfar Houna	L	L	VL	Kfar Jarrah	M	M	L	Lebaa	M	M	L
Louayzet Jezzine	L	L	VL	Machmouche	ML	L	VL	Mahmoudiyeh Jezzine	L	ML	VL
Maknounye Jezzine	ML	L	VL	Maraat Ouazaiyeh	L	ML	VL	Mazraat Daraya	L	L	VL
Mazraat El-Aarqoub	L	L	VL	Mazraat El-Mathane	ML	L	VL	Mazraat El-Rahbane	ML	L	VL
Mazraat Khamlet Khaz	L	L	VL	Mazraat Louzid (Loua	L	L	VL	Mazraat Qrouh	L	ML	VL
Mazraat Tamra	L	M	VL	Mazraat Zighrine Jez	L	L	VL	Mazraat	L	L	VL
Mharbiyeh	ML	M	L	Midane Jezzine	M	L	VL	Mjeydel Jezzine	M	M	VL
Mlikh	L	L	VL	Mrah El-Hbasse	M	M	L	Ouadi Baanqoudaine	M	M	L
Ouadi El-Laymoun	ML	M	L	Ouardiyeh	L	L	VL	Qabaa Jezzine	ML	L	VL
Qatrani	L	L	VL	Qaytouleh	ML	L	VL	Qtaleh Jezzine	ML	L	VL
Rihane Jezzine	L	ML	VL	Rimat	M	L	VL	Roum	ML	L	VL
Roummanet	ML	ML	VL	Sabbah	ML	L	VL	Saydoun	ML	L	VL
Sfaray	M	L	VL	Snaya	L	L	VL	Sojoud	L	L	VL
Srayri	L	L	VL	Taaid	ML	L	VL	Wadi Jezzine	M	L	VL
Zhalta	ML	L	VL								

Bekaa

West Bekaa

Municipality	31-Dec	01-Jan	02-Jan	Municipality	31-Dec	01-Jan	02-Jan	Municipality	31-Dec	01-Jan	02-Jan
Aammiq BG	ML	L	VL	Ain El Tineh BG	L	L	VL	Ain Zebdeh	ML	L	VL
Ana	ML	L	VL	Aytanit	L	L	VL	Baaloul BG	L	L	VL
Bab Mareh	ML	L	VL	Chouberqiye Aammiq	ML	L	L	Dakoue	L	ML	L
Deir Ain El-Jaouze	ML	L	VL	Deir Tahniche	ML	L	VL	Ghaza	ML	ML	L
Harime El-Soughra	ML	L	L	Hoch Harimeh	ML	L	L	Jazira BG	ML	L	VL
Jib Jennine	ML	L	L	Kamed-El-Laouz	L	ML	L	Kefraya BG	ML	L	VL
Khiara El Atika	ML	ML	L	Khiara	ML	ML	L	Khirbet Qanafar	ML	L	VL
Lala	L	L	VL	Lebbaya BG	L	L	VL	Loussa	L	L	VL
Machghara	ML	L	VL	Manara (Hammara) BG	L	L	L	Mansoura BG	ML	L	L
Marej BG	ML	L	VL	Maydoun	L	L	VL	Ouaqf BG	ML	L	VL
Qaraaoun	ML	L	VL	Qelya	L	L	VL	Raouda (Istabel)	L	ML	L
Saghbine	ML	L	VL	Sohmor	L	L	VL	Soltan Yacoub el Ara	L	ML	L
Souairy	ML	L	L	Sultan Yaacoub	L	ML	L	Tal Znoun	ML	L	VL
Yehmor BG	L	L	VL	Zilaya	L	L	VL				

Zahle

Municipality	31-Dec	01-Jan	02-Jan	Municipality	31-Dec	01-Jan	02-Jan	Municipality	31-Dec	01-Jan	02-Jan
Aanjar (Haouch Mouss	L	ML	L	Ablah	L	L	VL	Ain Kfarzabad	L	L	VL
Ali-El-Nahri	L	L	VL	Bar Elias	L	L	VL	Bouarej	L	L	VL
Cheberqiyet Tabet	L	L	VL	Chtaura	L	L	VL	Deir El Ghazal	L	L	VL
Delhamiyet Zahle	L	L	VL	Ferzol	L	L	VL	Haouch El-Ghanam	L	L	VL
Haouch Es-Siyadeh	ML	L	VL	Haouch Hala	L	L	VL	Haouch Mandara	ML	L	VL

Haouch Qayssar	ML	L	VL	Hezerta	ML	L	VL	Hosh Moussa	L	L	VL
Jdita	L	L	VL	Kfarzabad	L	ML	L	Ksara	L	L	VL
Majdel Aanjar	L	L	L	Makssi	L	L	VL	Massa	L	L	VL
Mazraat Er-Remtaniye	ML	L	VL	Mrayjat Zahle	L	L	VL	Mzaraa Zahle	ML	L	VL
Nabi Ayla	L	L	VL	Nasriyet Rizk	L	L	VL	Nasriyet Zahle	ML	L	VL
Niha Zahle	ML	L	VL	Ouadi Ed-Deloum	L	L	VL	Ouadi El-Arayech	L	L	VL
Qaa El Rim	M	L	VL	Qab Elias	L	L	VL	Qousaya	L	L	L
Rhit	L	L	VL	Riyak	L	L	VL	Saadnayel	L	L	VL
Taal El-Akhdar	ML	L	L	Taalbeya	L	L	VL	Taanayel	L	L	VL
Talamara	L	L	VL	Tcheflik Edde Haouch	ML	L	VL	Tcheflik Qiqano	ML	L	VL
Terbol Zahle	L	L	VL	Touaite Zahle	ML	L	VL	Zahle Aradi	ML	L	VL
Zahle El-Berbara	L	ML	VL	Zahle El-Maallaqa	ML	ML	VL	Zahle El-Midane	ML	ML	VL
Zahle Er-Rassiye	ML	ML	VL	Zahle Haouch El-Ouma	L	L	VL	Zahle Haouch El-Ouma	L	L	VL
Zahle Haouch Ez-Zara	L	ML	VL	Zahle Maalaqa Aradi	L	L	VL	Zahle Mar Antonios	ML	ML	VL
Zahle Mar Elias	ML	ML	VL	Zahle Mar Gerios	ML	L	VL	Zahle Saydet En-Naja	ML	ML	VL
Zebdoul	L	L	VL								

Rachaiya

Municipality	31-Dec	01-Jan	02-Jan	Municipality	31-Dec	01-Jan	02-Jan	Municipality	31-Dec	01-Jan	02-Jan
Ain Arab Rachaiya	ML	L	L	Ain Ata	ML	L	VL	Ain Harche	ML	L	L
Aqabe Rachaya	M	L	L	Ayha	M	L	L	Ayta El Fokhar	ML	L	L
Bakifa Rachaya	M	L	L	Bakka	ML	L	L	Beit Lahya	ML	ML	L
Bireh Rachaiya	L	L	L	Daher El Ahmar	ML	L	L	Deir El-Achayer	ML	L	VL
Heloua Rachaiya	ML	L	VL	Hoch El Qannabeh Rac	ML	L	L	Kaoukaba Bou Arab	L	L	VL
Kfar Danis	ML	ML	L	Kfar Mechki	ML	L	L	Kfar Qouq	ML	L	L
Kherbet Rouha	ML	L	L	Majdel Balhiss	ML	L	VL	Mdoukha	L	L	L
Mhaydseh Rachaiya	ML	L	L	Nabi Safa	ML	L	VL	Rachaiya	ML	L	VL
Rafid Rachaiya	ML	L	L	Selsata (Mazraat Dei	ML	L	VL	Tannoura	ML	L	L
Yanta	ML	L	L								

Beyrouth

Beyrouth

Municipality	31-Dec	01-Jan	02-Jan	Municipality	31-Dec	01-Jan	02-Jan	Municipality	31-Dec	01-Jan	02-Jan
Achrafieh	M	M	L	Ain el-Mreisse	M	M	L	Bachoura	M	M	L
Beirut Central Distr	M	M	L	Marfai	M	M	L	Mazraa	M	M	L
Medaouar	M	M	L	Minet el-Hosn	M	M	L	Mwssaitbeh	MH	M	L
Ras Beirut	M	M	L	Rmeil	M	M	L	Saifi	M	M	L
Zqaq el-Blat	M	M	L								



نشرة الطقس الصادرة عن دائرة التقديرات في مصلحة الأرصاد الجوية

النشرة: الصباحية

الجمعة: ٣٠ كانون الأول ٢٠١٦

الحالة العامة: منخفض جوي متمركز فوق اليونان يؤثر على الحوض الشرقي للمتوسط مما يؤدي الى طقس متقلب وماطر خلال الأيام القادمة.

الطقس المتوقع في لبنان:

السبت: غائم اجمالاً مع أمطار تكون غزيرة خلال الفترة الصباحية واحتمال حدوث برق ورعد فجرأ ورياح ناشطة وانخفاض محدود بدرجات الحرارة، تخف حدة الامطار ابتداءً من بعد الظهر. تتساقط الثلوج على ارتفاع 1300 وما فوق وتندني ليل السبت /الاحد الى 1000م.

الأحد: غائم جزئياً الى غائم مع انخفاض طفيف بدرجات الحرارة واحتمال تساقط امطار محلية وثلوج اعتباراً من ارتفاع 1000 متر .

الأحد		السبت		الجمعة		درجات الحرارة المتوقعة	
١١/١٦		١٢/١٦		١٣/١٨		صور	الساحل
١٢/١٧	٨/١٧	١٢/١٧	٩/١٧	١٣/١٩	١٠/١٩	بيروت	
٨/١٧		٩/١٧		١٠/١٩		طرابلس	
٤/٨		٥/٩		٦/١٢		بيصور	الجبال
٣/٦	٣/٨	٤/٧	٤/٩	٦/١٠	٦/١٢	قرطبا	
٣-/٢		٢-/٣		١-/٦		الأرز	
٣/٨		٤/٩		٦/١١		مرجعيون	الداخل
٤/١٠	٣/١٠	٥/١١	٤/١١	٦/١٣	٦/١٣	زحلة	

الرياح السطحية: جنوبية الى جنوبية غربية، سرعتها بين ١٥ و ٤٠ كلم/س، تشتد احياتا لتصل الى ٦٥ كلم/س.

الانقشاع: جيد اجمالاً

الرطوبة النسبية على الساحل: بين ٥٥ و ٧٥ %.

حال البحر: متوسط ارتفاع الموج

الضغط الجوي: ١٠٢٠ HPA

ساعة شروق الشمس: ٠٦:٤٣

حرارة سطح الماء: ١٨°م.

أي ما يعادل: ٧٦٥ ملم زئبق

ساعة غروب الشمس: ١٦:٣٩