

# Lebanon Fire Risk Bulletin



CIVIL DEDEFENCE

*Refer to cadast condition.*

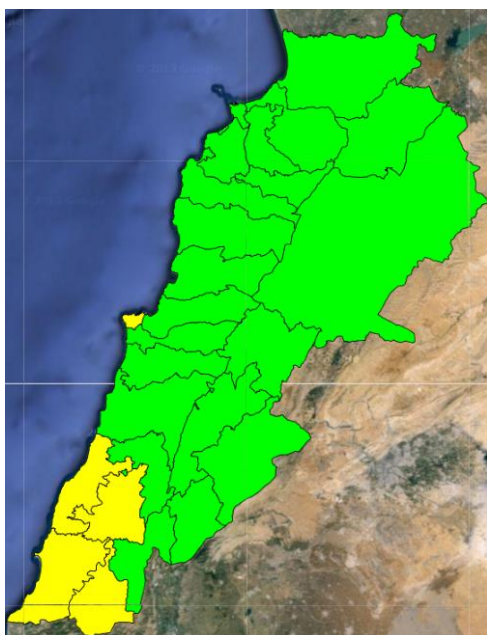
*General description of potential fire risk situation*

Symbol	Level of risk	Meaning and actions
VL	Very low	Very low fire risk. Controlled burning operations can be hardly executed due to high fuel moisture content. Normally wildfires self-extinguish.
L	Low	Low fire risk. Controlled burning operations can be executed with a reasonable degree of safety.
ML	Medium low	Medium-low fire risk. Controlled burning operations can be executed in safety conditions. All the fires need to be extinguished.
M	Medium	Medium fire risk. Controlled burning operations would be avoided. All the fires need to be very well extinguished.
M	Medium high	Controlled burning is not recommended. Open flame will start fires. Cured grasslands and forest litter will burn readily. Spread is moderate in forests and fast in exposed areas. Patrolling and monitoring is suggested. Fight fires with direct attack and all available resources.
H	High	Ignition can occur easily with fast spread in grass, shrubs and forests. Fires will be very hot with crowning and short to medium spotting. Direct attack on the head may not be possible requiring indirect methods on flanks. Patrolling and monitoring the territory is highly suggested.
E	Extreme	Ignition can occur also from sparks. Fires will be extremely hot with fast rate of spread. Control may not be possible during day due to long range spotting and crowning. Suppression forces should limit efforts to limiting lateral spread. Damage potential total. Patrolling and monitoring the territory is highly suggested.

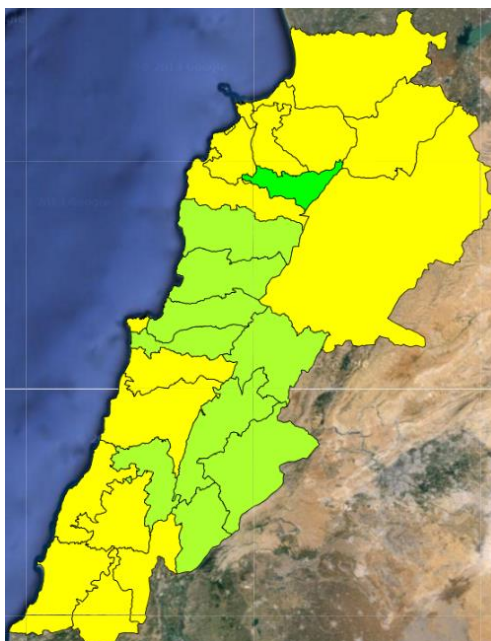
**Beirut, 6 January 2016**

# FIRE RISK INDEX

5 January



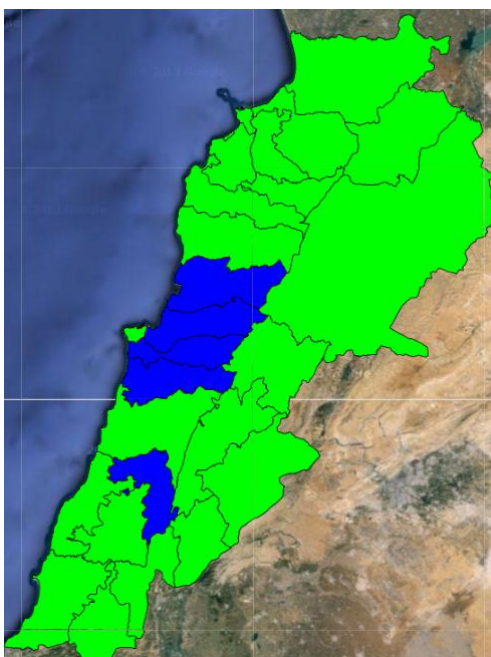
6 January



7 January



8 January



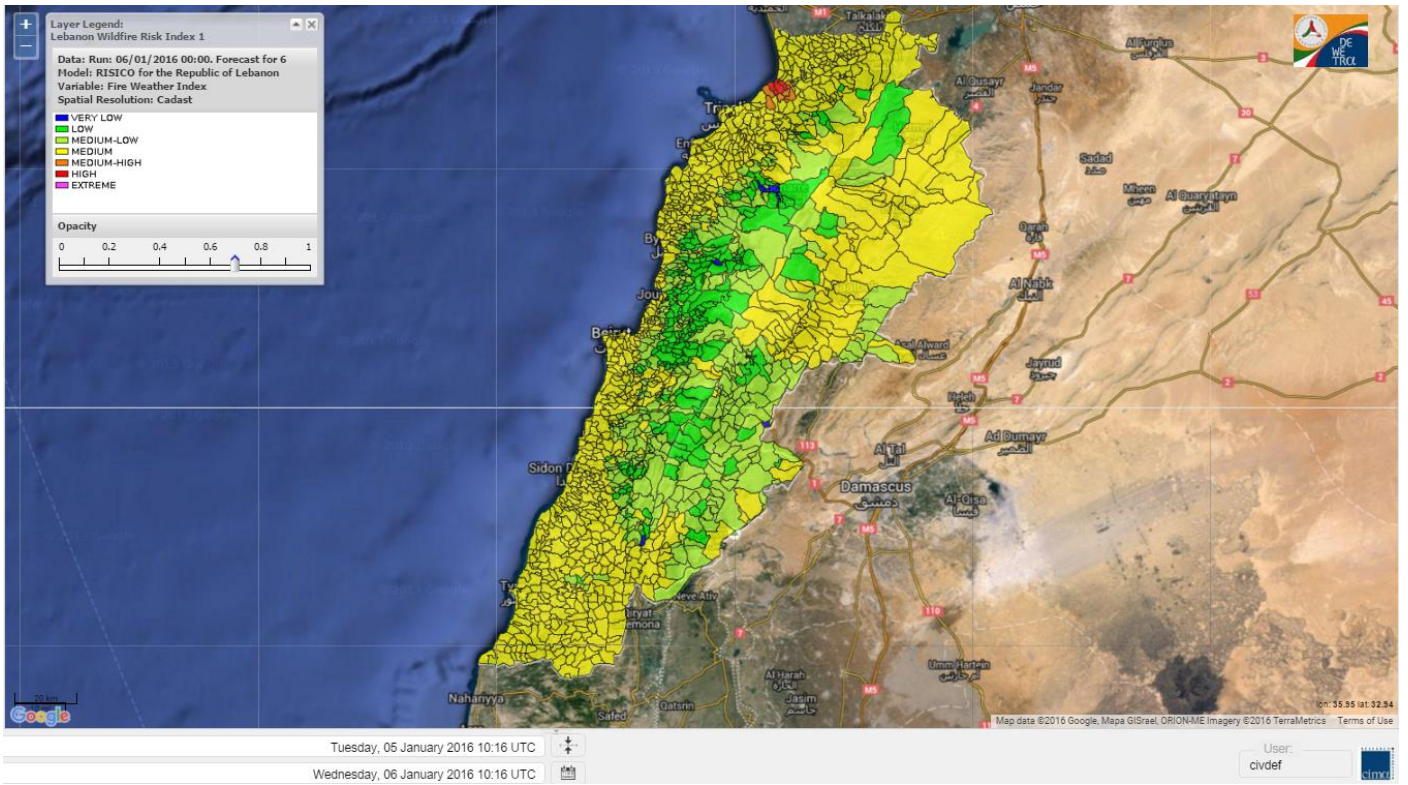
Layer Legend:  
Lebanon Wildfire Risk Index 1

Data: Run: 06/01/2016 00:00. Forecast for 6  
Model: RISICO for the Republic of Lebanon  
Variable: Fire Weather Index  
Spatial Resolution: Caza

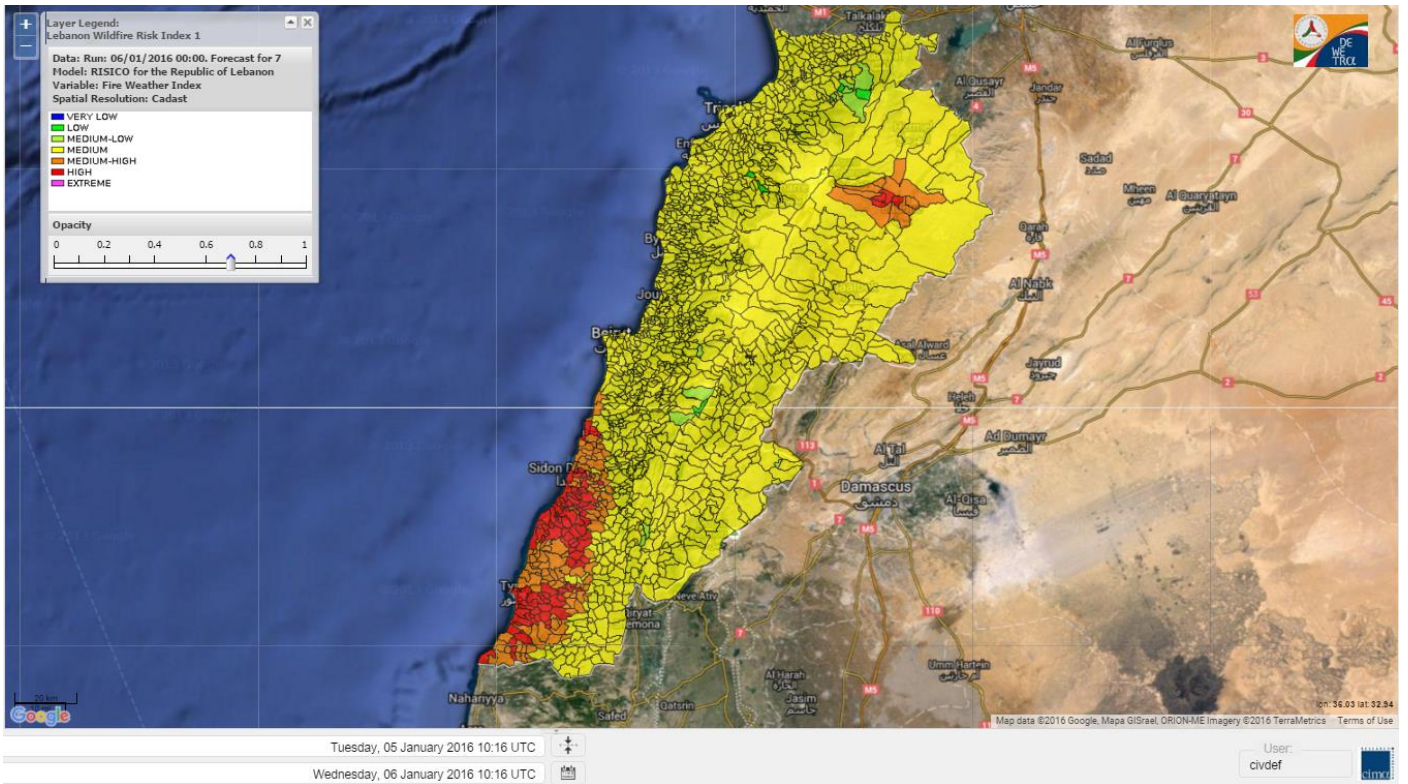
- VERY LOW
- LOW
- MEDIUM-LOW
- MEDIUM
- MEDIUM-HIGH
- HIGH
- EXTREME



# Lebanon 6 January 2016



# Lebanon 7 January 2016

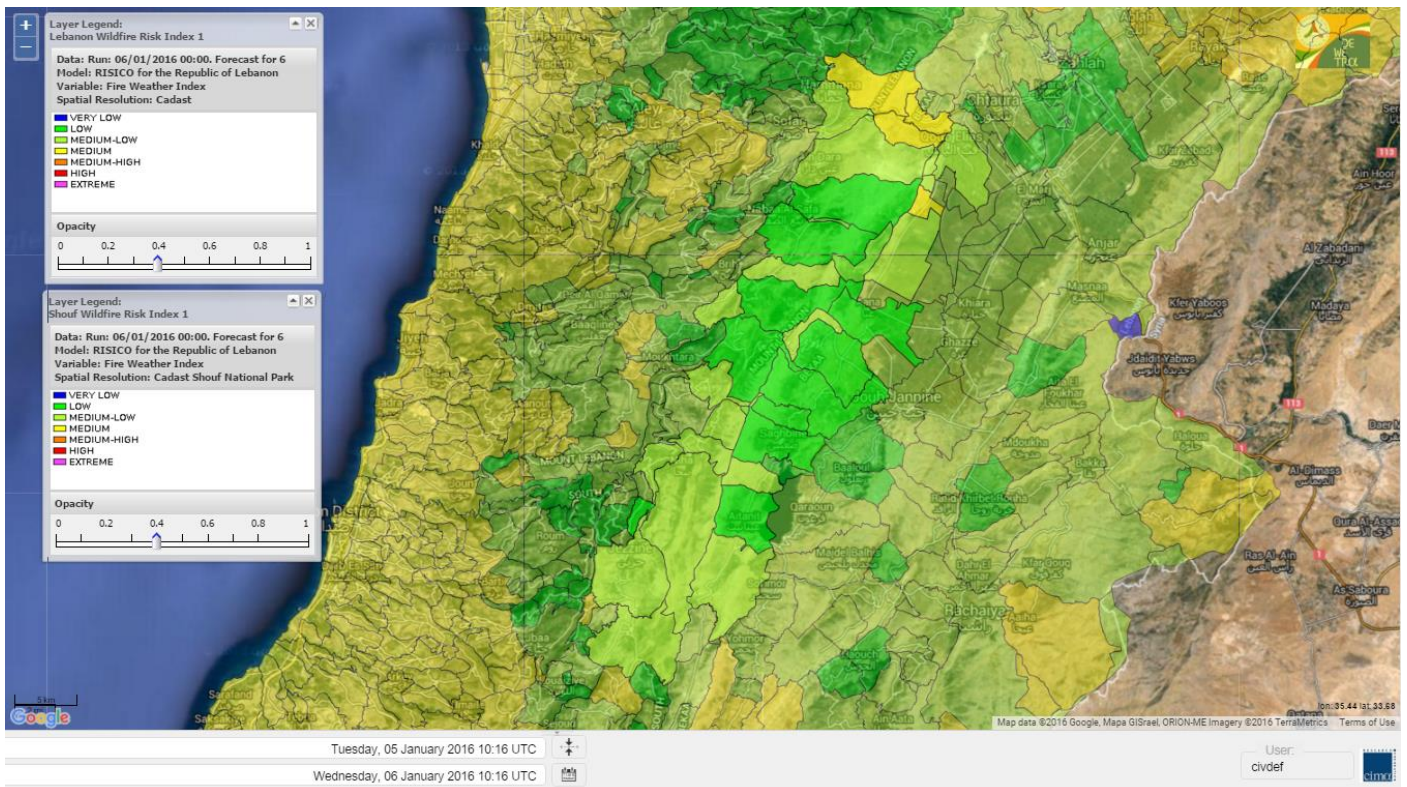




# Lebanon 8 January 2016

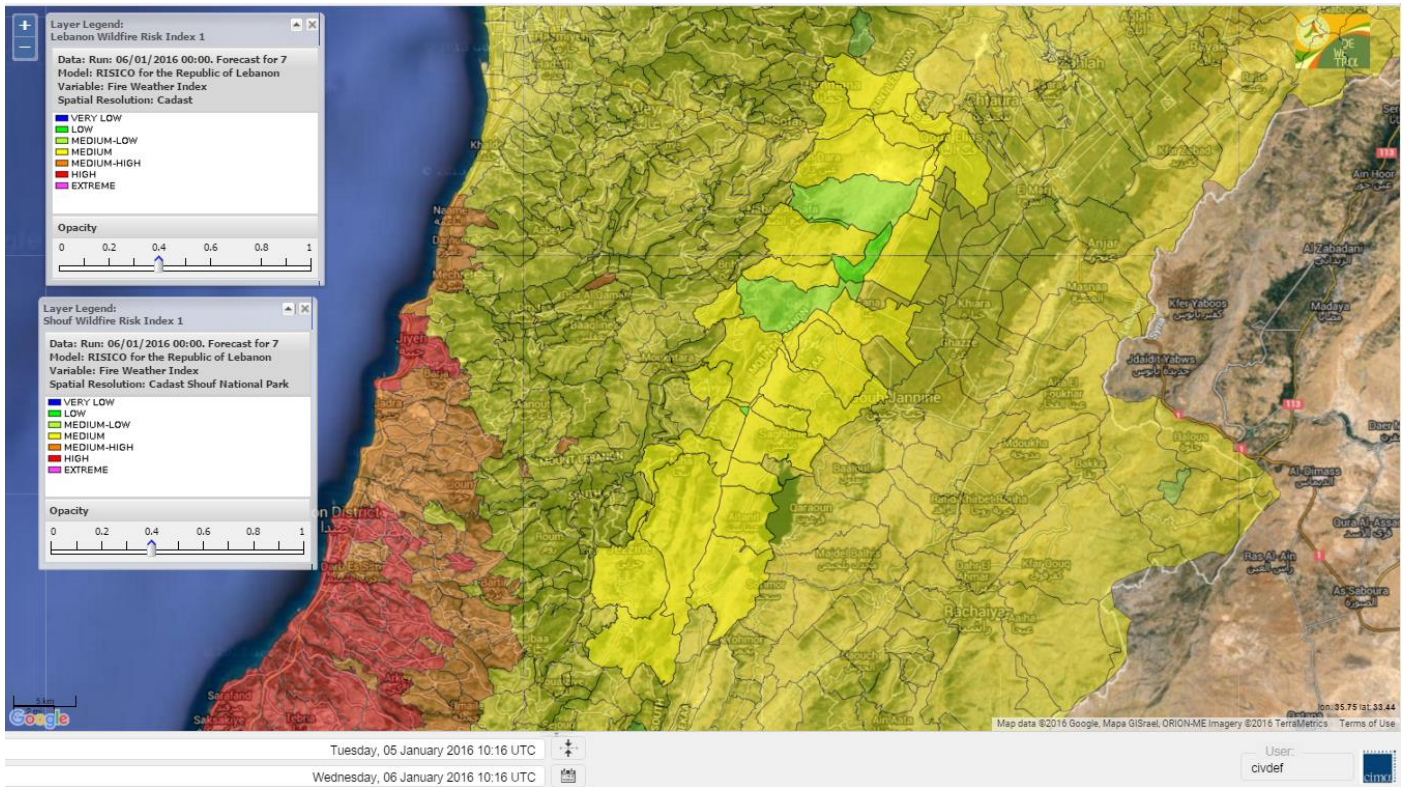


# Shouf Biosphere Reserve Forecast for 6 January 2016

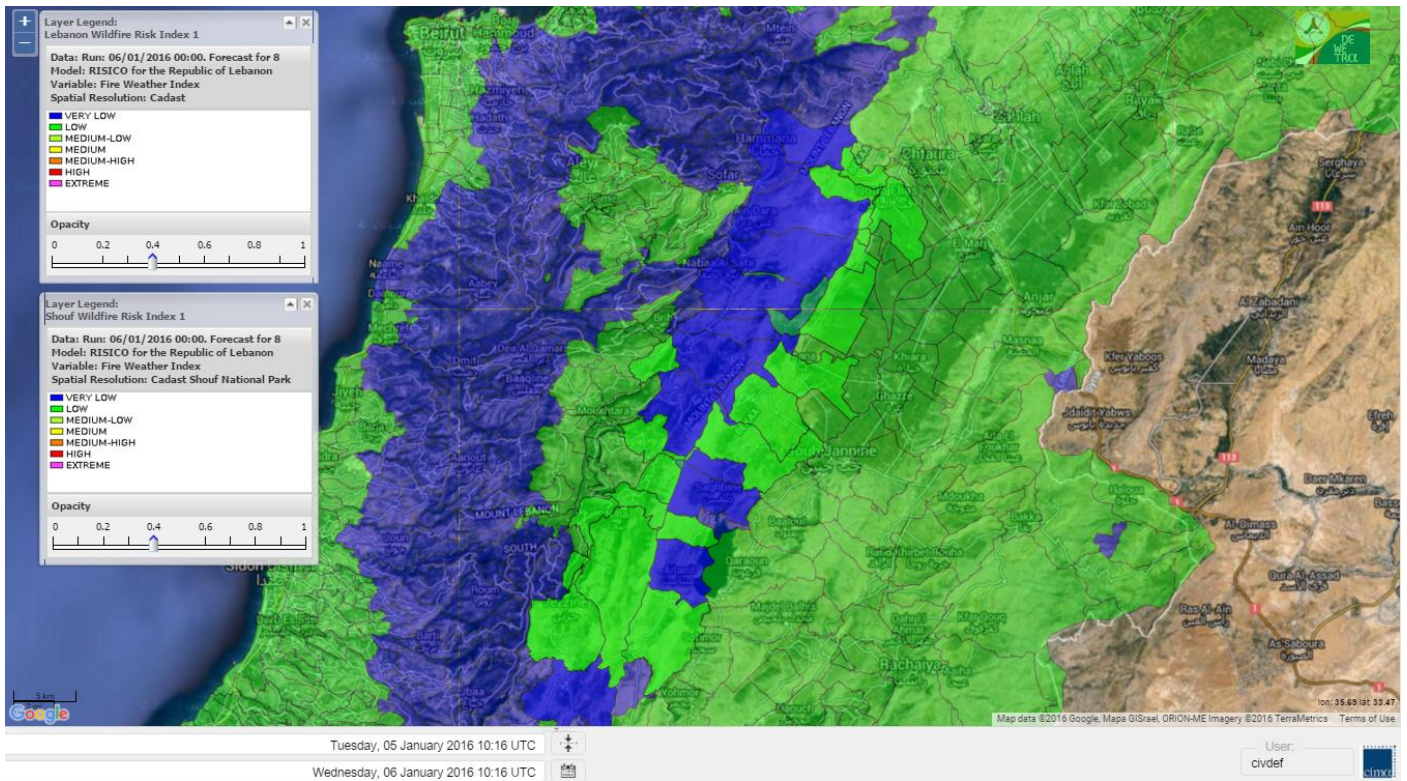




# Shouf Biosphere Reserve Forecast for 7 January 2016

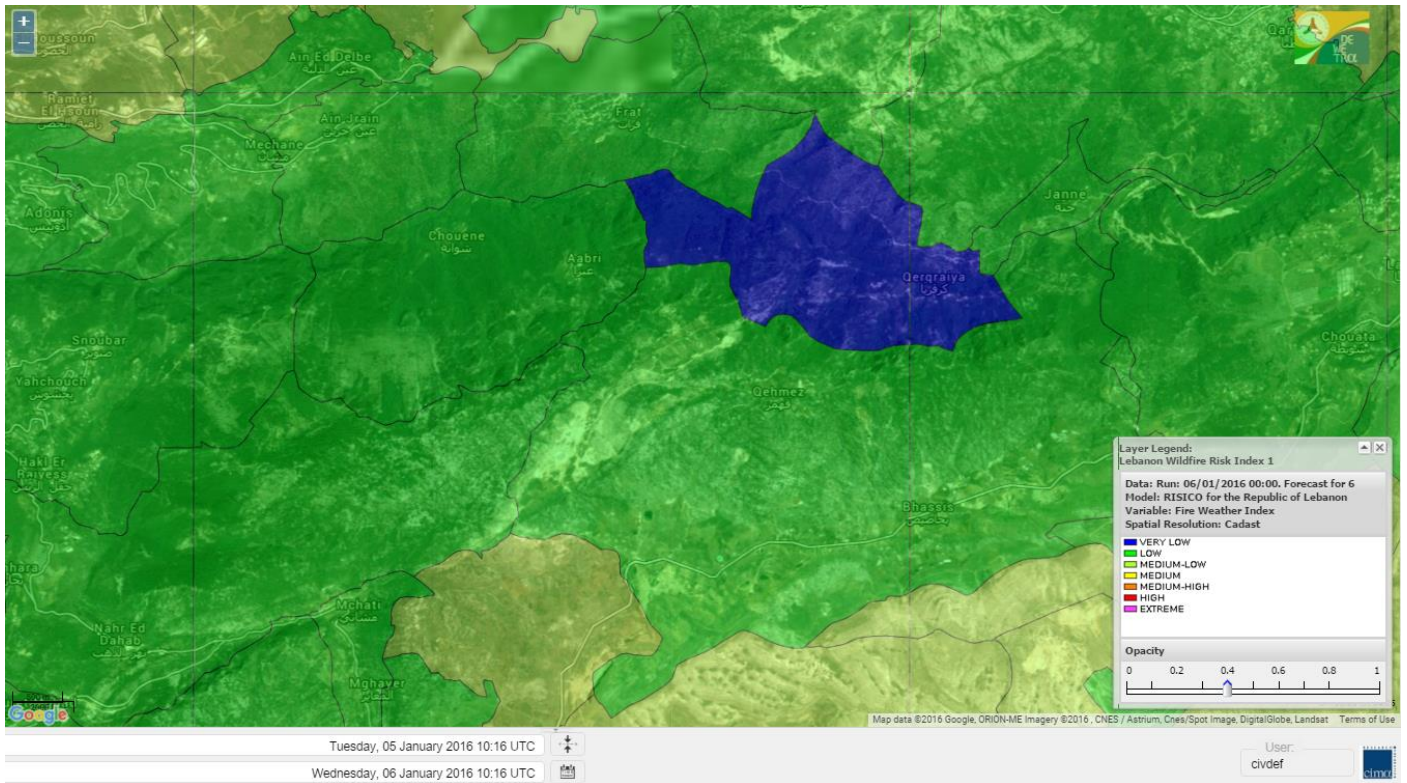


# Shouf Biosphere Reserve Forecast for 8 January 2016

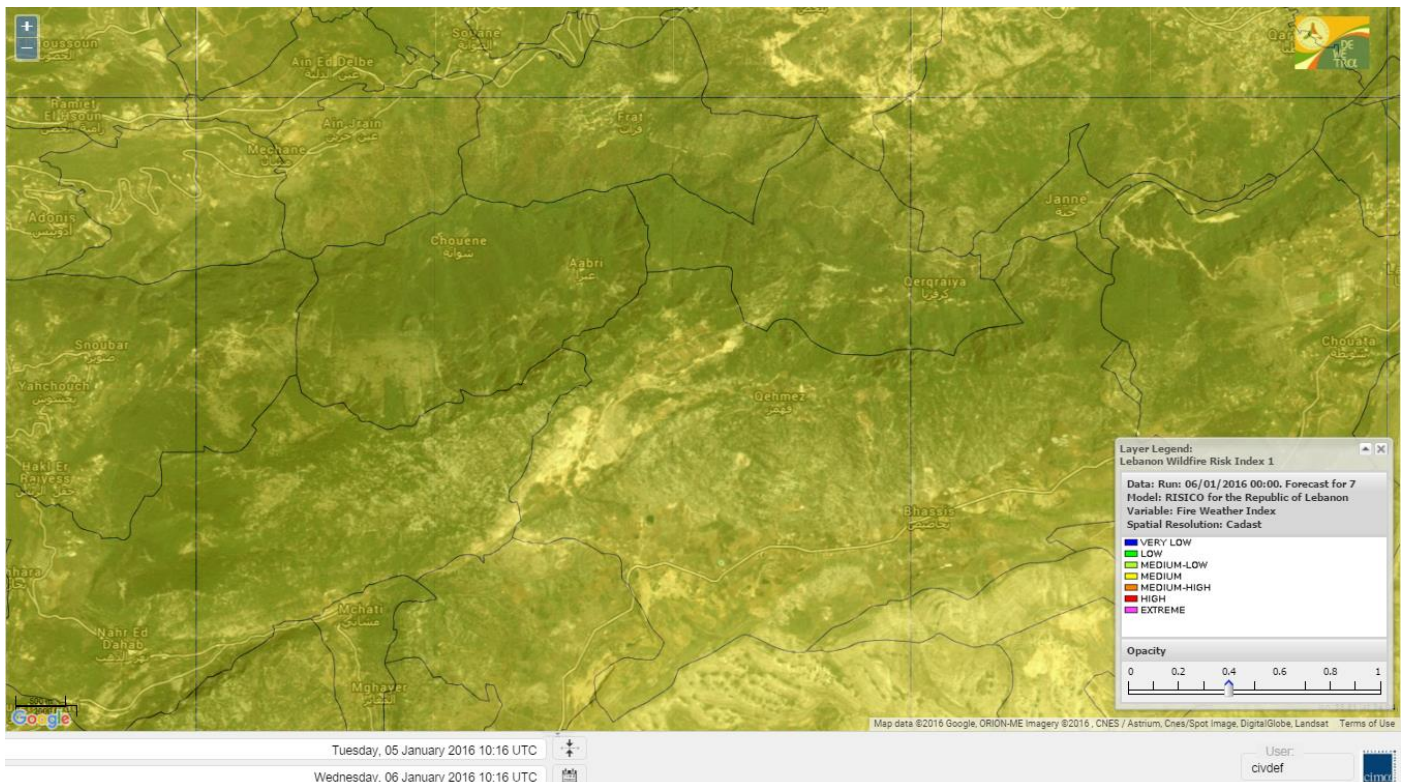




# Jabal Moussa Reserve Forecast for 6 January 2016

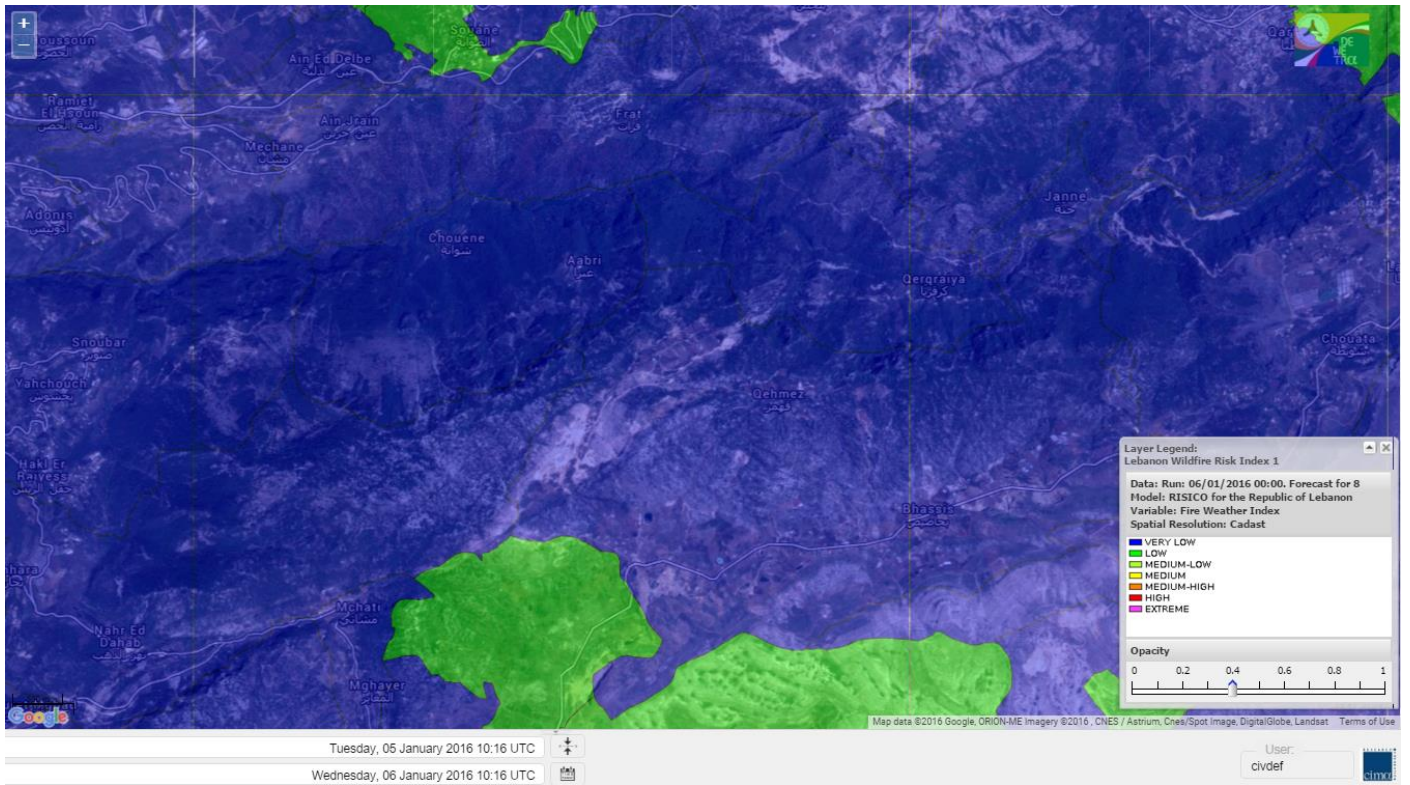


# Jabal Moussa Reserve Forecast for 7 January 2016





# Jabal Moussa Reserve Forecast for 8 January 2016



## Nord

### Koura

Municipality	06-Jan	07-Jan	08-Jan	Municipality	06-Jan	07-Jan	08-Jan	Municipality	06-Jan	07-Jan	08-Jan
Aaba	M	M	L	Afsaddiq	M	M	L	Ain Ekriane	M	M	L
Amioun	M	M	L	Anfeh	M	M	L	Badbhoun	M	M	L
Barghoun	M	M	L	Barsa	M	M	L	Batroumine	M	M	L
Bdebba	M	M	L	Bechmizine	M	M	L	Bednayeil El-Koura	M	M	L
Bhabbouch El-Koura	M	M	L	Bkeftine	M	M	L	Bnehran	M	M	L
Bqaiia El-Koura	M	M	L	Bsarma	M	M	L	Btaaboura	M	M	L
Bttram	M	M	L	Btouratij	M	M	ML	Bziza	M	M	L
Dar Beehtar	M	M	L	Dar Chmezzine	M	M	L	Deddeh	M	M	L
Deir El-Balamand	M	M	L	Fih	M	M	L	Hraiche	M	M	L
Ijdaabrine	M	M	L	Kaftoun	M	M	L	Kefraya El-Koura	M	M	L
Kfarakka	M	M	L	Kfarhata	M	M	L	Kfarhazir	M	M	L
Kfarkahel	M	M	L	Kfarsaroun	M	M	L	Kosba	M	M	L
Mejdel el-Koura	M	M	L	Nakhle	M	M	L	Qalhat	M	M	L
Ras Masqa	M	M	L	Rechdibbine	M	M	L	Zakroun	M	M	L
Zgharta El-Mtaouile	ML	M	L								

### Bcharre

Municipality	06-Jan	07-Jan	08-Jan	Municipality	06-Jan	07-Jan	08-Jan	Municipality	06-Jan	07-Jan	08-Jan
Aabdine	M	M	L	Bane	L	M	L	Barhelioun	ML	M	L
Bazooune	VL	M	VL	Becharre	L	M	L	Beit Menzer	L	M	L
Billa	ML	M	L	Blaouza	ML	M	L	Bqaa Kafra	L	M	VL
Bqerqacha	L	M	VL	Breissat	ML	M	L	Dimane	ML	M	L
Hadath El Jobbeh	ML	M	L	Hadchit	VL	M	L	Hasroun	L	M	VL
Mazraat Aassaf	L	M	VL	Mazraat Bani Saab	ML	M	L	Mchaa El-Jobbeh	L	M	L
Metrit	M	M	L	Moghr El-Ahoual	M	M	L	Ouadi Qannoubine	VL	L	VL
Qanat	L	M	L	Qnayer	L	M	L	Tourza	ML	M	L

### Batroun

Municipality	06-Jan	07-Jan	08-Jan	Municipality	06-Jan	07-Jan	08-Jan	Municipality	06-Jan	07-Jan	08-Jan
Aabrine	M	M	VL	Aalali	M	M	L	Aartiz	M	M	VL
Abdelli	M	M	VL	Ajdabra	M	M	VL	Assia	M	M	VL
Basbina	M	M	L	Batroun	M	M	L	Bcheleh	ML	M	L
Bechtoudar	M	M	VL	Beit Chlala	ML	M	L	Beit Kassab	L	M	VL
Bijdarfil	M	M	L	Bqesmaya	M	M	L	Chatine	ML	M	L
Chebtin	M	M	L	Chekka	M	M	L	Daael	M	M	VL
Dahr Abi Yaghi	M	M	VL	Daraya El-Batroun	M	M	L	Deir Billa	ML	M	L
Deir Kifane	M	M	L	Deir Mar Youhanna EL	ML	M	VL	Deir Mar Youssef Jra	M	M	VL
Douma	ML	M	L	Douq	M	M	VL	Eddeh El-Batroun	M	M	L
Ftihat El-Batroun	M	M	VL	Ghouma	M	M	L	Hadtoun	M	M	L
Hamat	M	M	L	Harbouna	M	M	VL	Hardine	L	M	VL
Helta	M	M	VL	Hery	M	M	L	Jebbla	M	M	VL
Jrabta El-Batroun	M	M	L	Jrane El-Batroun	M	M	L	Kfar Aabida	M	M	L
Kfar Halda	ML	M	VL	Kfarb Shlaimane	M	M	VL	Kfarhatna	M	M	L
Kfarhay	M	M	L	Kfarhelos	M	M	VL	Kfifane	M	M	L



Kfour El Arabi	ML	M	L	Koubba	M	M	L	Kour	M	M	L
Mar Mama	ML	M	VL	Masrah	ML	M	VL	Mehmarch	M	M	L
Mrah Chdid	M	M	L	Mrah El Ziyat	M	M	L	Mrah El-Hajj	M	M	VL
Nahle El-Batroun	M	M	L	Niha El-Batroun	ML	M	L	Ouajh El-Hajjar	M	M	L
Ouata Houb	L	M	VL	Qatnaaoun	M	M	L	Racha	M	M	L
Rachana	M	M	L	Rachkida	M	M	L	Ram El-Batroun	M	M	L
Ras Nahhach	M	M	L	Selaata	M	M	L	Sghar	M	M	L
Smar Jbayl	M	M	L	Sourat El-Batroun	M	M	VL	Tannourine El-Faouqa	L	M	L
Tannourine Et-Tahta	L	M	VL	Thoum	M	M	VL	Toula El-Batroun	M	M	L
Zan	M	M	L								

## Zgharta

Municipality	06-Jan	07-Jan	08-Jan	Municipality	06-Jan	07-Jan	08-Jan	Municipality	06-Jan	07-Jan	08-Jan
Aachach	M	M	ML	Aalma	M	M	ML	Aarde	M	M	L
Aintourine	M	M	L	Arabet Qozhaya	L	M	L	Arde	M	M	ML
Arjis	M	M	L	Asnoun	M	M	ML	Ayto	ML	M	L
Basloukit	M	M	L	Bchannine	M	M	L	Besebeel	M	M	L
Bhairret Toula	L	M	L	Bnachee	M	M	L	Boussit	M	M	L
Danha	M	M	ML	Daraiya Zgharta	M	M	L	Deir Jdeide	M	M	ML
Ehden	M	M	L	Halan	M	M	ML	Hariq Zgharta	M	M	ML
Houakir	M	M	L	Hraiqis	M	M	L	laal	M	M	ML
Ijbaa	M	M	L	Karm Saddeh	ML	M	L	Kfarchakhna	M	M	L
Kfardlaqous	M	M	ML	Kfarfou	M	M	L	Kfarhata Zgharta	M	M	ML
Kfarhoura	M	M	L	Kfarsghab	ML	M	L	Kfaryachit	M	M	ML
Kfarzaina	M	M	L	Khaldiye	M	M	ML	Mazraat Ajbeaa	M	M	L
Mazraat Et-Teffah	ML	M	L	Mazraat Jneid	M	M	ML	Mejdlaiya Zgharta	M	M	L
Merh Kfarsghab	M	M	L	Miryata	M	M	ML	Miziara	M	M	L
Mzraat Kefraya	M	M	ML	Qorah Bach	M	M	ML	Rachiine	M	M	ML
Ras Kifa	M	M	L	Sakhra	M	M	L	Sebhel Zgharta	M	M	L
Serhel	L	L	L	Tallet Zgharta	M	M	L	Toula Zgharta	ML	M	L
Zgharta	M	M	ML								

## Minieh-Denniye

Municipality	06-Jan	07-Jan	08-Jan	Municipality	06-Jan	07-Jan	08-Jan	Municipality	06-Jan	07-Jan	08-Jan
Aasaymout	L	M	L	Aaymar	M	M	L	Aazki	M	M	L
Ain El-Tineh-Miniyeh	L	ML	L	Assoun	M	M	L	Bakhaaoun	M	M	L
Bchennata	M	M	L	Bechehhara	M	M	L	Beddawi	M	M	L
Behouaita	ML	M	L	Beit El Foqss	ML	ML	L	Beit Haouik	M	M	L
Beit Zoud	M	M	L	Bekaasafrine	ML	M	L	Borj El Yahoudiyeh	M	M	L
Bqarsouna	ML	M	L	Btermaz	M	M	L	Debaael	ML	M	L
Deir Ammar	M	M	L	Deir Nbouh	M	M	L	Haouaret-Miniyeh	M	M	L
Haql el Azimeh	M	M	L	Harf El Siyad	M	ML	L	Hazmiye-Miniyeh	ML	ML	L
Izal	M	M	L	Jarjour	ML	M	L	Jayroun	ML	M	L
Kahf El-Malloul	M	M	L	Karm El-Moher	M	M	L	Kfar Binine	M	M	L
Kfarchalane	M	M	L	Kfarhabou	M	M	L	Kharroub-Miniyeh	M	M	L
Mazraat El-Kreme	ML	M	L	Mazraat Ketrane	M	M	L	Merkebta	MH	M	ML
Minyeh	M	M	L	Mrah El Sfirat	ML	M	L	Mrah Sraj	M	M	L
Mrebbine	M	M	L	Nabi Youcheaa	M	M	L	Nemrine	M	M	L

Qarhaiya	M	M	L	Qarne	L	M	L	Qarsita	L	M	L
Qattineh-Miniyeh	ML	M	L	Qemmamine	L	M	L	Qraine	M	M	L
Raouda-Aadoua	M	M	ML	Rihaniyet-Miniyeh	H	M	ML	Sfireh	M	M	L
Sir Ed-Danniyeh	M	M	L	Tarane	M	M	L	Terbol-Miniyeh	M	M	ML
Zaghartaghriine	M	M	L	Zouq Bhannine	MH	M	L				

## Nabatiye

### Nabatiye

Municipality	06-Jan	07-Jan	08-Jan	Municipality	06-Jan	07-Jan	08-Jan	Municipality	06-Jan	07-Jan	08-Jan
Aabba	M	H	L	Aazzi	M	MH	L	Adchit El-Chqif	M	H	L
Ain Bou Swar	M	M	VL	Ain Kana	M	M	VL	Ali El-TaHER	M	M	L
Ansar	M	MH	L	Arab Salim	M	M	L	Arnoun	M	M	L
Bfaroue	M	H	L	Breyqaah	M	H	L	Charqiyeh	M	H	L
Choukine	M	M	L	Deir El Zahrani	M	MH	L	Doueir El-Nabatiyeh	M	H	L
Habbouch El-Nabatiye	M	M	L	Hamra El-Nabatiyeh	M	M	L	Harouf El-Nabatiyeh	M	M	L
Hmaile	M	MH	VL	Houmin El Faouqa	M	M	VL	Houmin El Tahta	M	H	L
Jarjough	ML	M	L	Jbaah El-Nabatiyeh	ML	M	VL	Jebchit	M	MH	L
Kfar Djal El-Nabatiy	M	M	L	Kfar Remmane	M	M	L	Kfar Sir	M	MH	L
Kfar Tebnit	M	M	L	Kfarfila	M	MH	VL	Kfour El-Nabatieh	M	M	L
Mayfadoun	M	M	L	Mazraat Bsaffour	M	H	L	Mazraat Chalbaal	M	H	L
Mazraat Dmoul	M	H	L	Mazraat El Khreibeh	M	MH	VL	Mazraat El-Bayad El-	M	M	VL
Mazraat Kfarjaouz	M	M	L	Mazraat Qalaat Meiss	M	MH	L	Nabatiyeh El-Fawka	M	M	L
Nabatiyeh Et-Tahta	M	M	L	Namiriyyeh	M	H	L	Qaaqaaiyet El Jisr	M	MH	L
Qossaibeh El-Nabatiy	M	H	L	Roumine	M	MH	L	Sarba El-Nabatieh	M	MH	VL
Sir El-Gharbiyeh	M	MH	L	Toul	M	M	L	Yehmor El-Nabatiyeh	M	M	L
Zaoutar El Charkiyeh	M	M	L	Zaoutar El-Gharbiyeh	M	M	L	Zebdine El-Nabatiyeh	M	M	L
Zefta	M	H	L								

### Hasbaiya

Municipality	06-Jan	07-Jan	08-Jan	Municipality	06-Jan	07-Jan	08-Jan	Municipality	06-Jan	07-Jan	08-Jan
Aain Jarfa	ML	M	L	Abou Qamha	M	M	L	Ain Qania	ML	M	L
Bourghos	M	M	L	Chebaa	ML	M	L	Chouaya Hasbaya	ML	M	L
Dellafeh	M	M	L	Fardiss Hasbaiya	M	M	L	Hasbaya	M	M	L
Hbariyeh	ML	M	L	Kaoukaba Hasbaiya	M	M	L	Kfar Chouba	ML	M	L
Kfar Hamam	ML	M	L	Kfeir El-Zait	ML	M	L	Khalwat Hasbaya	L	M	L
Khreibet Hasbaiya	M	M	L	Majidiyeh Hasbaiya	M	M	L	Marj Ez-Zhour (Haouc	L	M	L
Meri	M	M	L	Mimass	M	M	L	Rachaiya El-Fokhar	M	M	L
Salaiyeb	M	M	L								

### Marjayoun

Municipality	06-Jan	07-Jan	08-Jan	Municipality	06-Jan	07-Jan	08-Jan	Municipality	06-Jan	07-Jan	08-Jan
Aalmane Marjaayoun	ML	M	L	Aamra	M	M	L	Adayseh Marjaayoun	M	M	L
Adchit El-Koussair	M	M	L	Ain Arab Marjaayoun	M	M	L	Bani Haiyann	M	M	L
Blatt Marjaayoun	M	M	L	Blida	M	M	L	Borj El-Moulouk	M	M	L
Boueyda Marjaayoun	M	M	L	Deir Mimass	M	M	L	Deir Siriane	M	M	L
Dibbine	M	M	L	Ebel El Saqi	M	M	L	Houla	M	M	L
Houra	M	M	L	Kfar Kila	M	M	L	Khiam Marjaayoun	M	M	L



Klayaa	M	M	L	Majdel Selem	M	M	L	Marjaayoun	M	M	L
Markaba	M	M	L	Mays El-Jabal	M	M	L	Mazraat Doumiat	M	M	L
Mazraat Sarada	M	M	L	Mhaibib	M	M	L	Qabrikha	M	M	L
Qantara	M	M	L	Rab El-Thalathine	M	M	L	Saouaneh Marjayoun	M	M	L
Taloussa	M	M	L	Taybeh Matjaayoun	M	M	L	Touline	M	M	L

## Bent Jbail

Municipality	06-Jan	07-Jan	08-Jan	Municipality	06-Jan	07-Jan	08-Jan	Municipality	06-Jan	07-Jan	08-Jan
Ain-Ebel	M	M	L	Aitaroun	M	M	L	Aynata Bint Jbeil	M	M	L
Ayta El-Chaeb	M	M	L	Ayta El-Jabal	M	M	L	Beit Lif	M	M	L
Beit Yahoun	M	M	L	Bint Jbeil	M	M	L	Borj Qalaway	M	MH	L
Braachit	M	M	L	Chakra	M	M	L	Debel	M	M	L
Deir Antar	M	MH	L	Froun	M	MH	L	Ghandouriyeh Bint Jb	M	M	L
Hanine	M	M	L	Hariss	M	M	L	Hdatha	M	M	VL
Jmeymeh	M	M	L	Kafra Bint Jbeil	M	MH	L	Kfar Dounine	M	MH	L
Khirbet Selm	M	M	L	Kounine	M	M	L	Maroun El Ras	M	M	L
Qalaway	M	MH	L	Qaouzah	M	M	L	Qatmoun	M	M	VL
Ramya Bint Jbeil	M	M	L	Rchaf	M	M	VL	Rmeich	M	M	L
Safad Al Battikh	M	M	L	Salhaneh	M	M	VL	Serbine	M	MH	L
Sultanieh Bint Jbeil	M	M	L	Tibnine	M	M	L	Tiri	M	M	VL
Yaroun	M	M	L	Yater	M	MH	L				

## Mont Liban

### Jbail

Municipality	06-Jan	07-Jan	08-Jan	Municipality	06-Jan	07-Jan	08-Jan	Municipality	06-Jan	07-Jan	08-Jan
Aabeydat	M	M	VL	Aalita	ML	M	VL	Aamchit	M	M	L
Aarab El-Lahib	L	M	L	Aarasta	L	M	VL	Adonis Jbeil	L	M	VL
Afqa Jbeil	L	M	VL	Ain El Delbeh Jbeil	L	M	VL	Ain El-Ghouayba	L	M	VL
Ain Jrain	L	M	VL	Ain Kfah	M	M	L	Almat El Chemaliyat	ML	M	VL
Almat El-Jenoubiya	L	M	VL	Aqoura	ML	M	L	Bayzoun	ML	M	VL
Bchille Jbeil	ML	M	VL	Bechtlida	L	M	VL	Behdaydat	M	M	L
Beit Habbaq	M	M	L	Bejjeh	M	M	L	Bekhaaz	M	M	L
Berbara Jbeil	M	M	L	Bintael	ML	M	L	Birket Hjoula	L	M	VL
Blatt Jbeil	M	M	L	Boulhos	L	M	VL	Breyj Jbeil	L	M	VL
Chamat	M	M	L	Chikhane	M	M	L	Chmout	M	M	VL
Eddeh Jbeil	M	M	L	Ehmej	L	M	VL	Fatre	L	M	VL
Ferhet	M	M	L	Fghal	M	M	VL	Frat	L	M	VL
Ghabat	L	M	VL	Ghalboun	M	M	L	Gharzouz	M	M	L
Ghofrine	M	M	L	Habil	L	M	VL	Halate	M	M	L
Haqel	ML	M	VL	Hbaline	M	M	L	Hboub	M	M	L
Hdeine	L	M	VL	Hema Er-Rehban	M	M	L	Hema Mar Maroun Aann	ML	M	VL
Hjoula	L	M	VL	Hosrayel	M	M	L	Hsarat	M	M	L
Hsoun	ML	M	VL	Jaj	ML	M	L	Janne	L	M	VL
Jbeil	M	M	L	Jeddeyel Jbeil	M	M	L	Jlisse	L	M	VL
Jouret El-Qattine	ML	M	VL	Kfar Baal Annaya	L	M	VL	Kfar Kidde	M	M	L
Kfar Kouas	ML	M	VL	Kfar Mashoun	M	M	L	Kfoun	M	M	VL

Kharbe Jbeil	M	M	L	Laqlouq	ML	M	L	Lassa	L	M	VL
Lehfed	M	M	VL	Maad	M	M	L	Mar Sarkis	ML	M	L
Mastita	M	M	L	Mayfouq	ML	M	VL	Mazraat El Siyad	ML	M	L
Mazraat El-Maaden	L	M	VL	Mechane	L	M	VL	Mechmech Jbeil	ML	M	VL
Mehrin	M	M	L	Mejdel El-Akoura	L	M	VL	Mghayreh Jbeil	L	M	VL
Mounsef	M	M	L	Nahr Ibrahim	M	M	L	Qahmez	L	M	VL
Qartaba	L	M	VL	Qartaboun	M	M	L	Qattara Jbeil	ML	M	VL
Qorqraya	VL	M	VL	Ramout	M	M	L	Ras Osta	L	M	VL
Rihane Jbeil	M	M	L	Sakiet El-Khayt	M	M	L	Saqi Richmaya	ML	M	L
Sebrine	L	M	VL	Seraita	L	M	L	Souane Jbeil	ML	M	L
Tadmor	ML	M	VL	Tartej	ML	M	L	Torzaiya	ML	M	L
Yanouh Jbeil	L	M	L	Zibidine Jbeil	ML	M	VL				

## El Metn

Municipality	06-Jan	07-Jan	08-Jan	Municipality	06-Jan	07-Jan	08-Jan	Municipality	06-Jan	07-Jan	08-Jan
Aain El-Qabu	L	M	VL	Aain El-Qach	ML	M	L	Aain El-Teffaha	ML	M	L
Aain el-Safssaf El-M	L	M	VL	Abou Mizane	ML	M	L	Ain Aar	M	M	L
Ain Alaq	ML	M	VL	Ain El-Kharroube	ML	M	L	Ain El-Sendiane	L	M	VL
Ain El-Zeitoune	L	M	VL	Ain Saadeh	ML	M	VL	Aintoura El-Matn	ML	M	L
Amaret Chalhoub	M	M	L	Antelias	M	M	L	Atchaneh	ML	M	VL
Ayroun	ML	M	L	Baabdat	L	M	VL	Baouchariyeh	M	M	VL
Baskinta	L	M	VL	Beit Chabab	L	M	VL	Beit El-Char	M	M	L
Beit El-Kekko	M	M	L	Beit Mery	ML	M	VL	Bhersaf	L	M	VL
Bikfaya	ML	M	L	Biyakout	M	M	L	Bnabil	L	M	VL
Bourj Hammoud	M	M	L	Bqennaya	M	M	L	Broummana El-Matn	ML	M	VL
Bsalim	M	M	L	Bsifrine	L	M	VL	Bteghrine	L	M	VL
Chaouiye	ML	M	L	Chouaya El-Matn	ML	M	L	Choueir	L	M	VL
Chrine	L	M	VL	Dahr El Sawan El-Mat	L	M	VL	Daychouniyeh	M	M	VL
Dbayeh	M	M	L	Deir Chamra	L	M	VL	Deir Mar Abda el Mch	ML	M	VL
Deir Mar Roukouz	M	M	VL	Deir Tamiche	M	M	L	Dik El-Mehdi	M	M	L
Dikwaneh	M	M	VL	Douar El-Matn	L	M	VL	Fanar	M	M	VL
Fraike	L	M	VL	Haret El-Ballaneh	M	M	L	Hbous	M	M	L
Himlaya	ML	M	L	Jal El Did	M	M	L	Jdeideh El-Metn	M	M	VL
Jouar El-Matn	L	M	VL	Jouret El-Ballout	ML	M	VL	Kaaqour	L	M	VL
Kfar Aaqab	L	M	VL	Kfertay El-Matn	L	M	VL	Khenchara	L	M	VL
Khillet El-Mtain	L	M	VL	Konnabat Broummana	ML	M	VL	Konnabat Salima	L	M	VL
Machraah El-Matn	L	M	VL	Majdel Tarchich	ML	M	L	Majzoub	M	M	L
Mansouriyeh El-Metn	M	M	VL	Mar Boutros Karm Et-	L	M	VL	Mar Chaya et Mzekke	ML	M	VL
Mar Moussa Ed-Douar	L	M	VL	Marjaba	L	M	VL	Masqa	L	M	VL
Mayasse	L	M	L	Mazraat Deir Aoukar	M	M	L	Mazraat El-Hadirat	M	M	L
Mazraat Yachouh	M	M	L	Mchikha	L	M	VL	Menqlet Mezher	M	M	L
Mhaydseh Matn	ML	M	L	Mkalles	M	M	VL	Mrouj	L	M	L
Mtain	ML	M	VL	Mtayleb	M	M	L	Nabay	ML	M	VL
Naccache	M	M	L	Ouadi Chahine	L	M	VL	Ouadi El-Karm El-Mat	L	M	VL
Ouata El-Mrouj	L	M	VL	Ouyoun El-Matn	L	M	VL	Qornet Chehwan	M	M	L
Qornet El-Hamra	ML	M	VL	Roumieh	ML	M	VL	Sfeilet Bikfaya	L	M	VL
Sinn El-Fil	M	M	VL	Zabbougha	L	M	VL	Zalqa	M	M	L



Zarouon	L	M	VL	Zekrite	M	M	VL	Zighrine El-Matn	ML	M	L
Zouk El-Khrab	M	M	L								

## Chouf

Municipality	06-Jan	07-Jan	08-Jan	Municipality	06-Jan	07-Jan	08-Jan	Municipality	06-Jan	07-Jan	08-Jan
Aalmane El-Chouf	M	MH	L	Aammq El-Chouf	ML	M	VL	Ain Ouzein	L	M	L
Ain Qani	ML	M	L	Ain Zhalta	L	M	VL	Ainbal	ML	M	VL
Amatour	ML	M	L	Anout	M	M	VL	Atrine	ML	M	VL
Baadarane	ML	M	L	Baaqline	ML	M	VL	Baasir	M	H	L
Barja	M	MH	L	Barouk	L	ML	VL	Bater	ML	M	L
Batloun	ML	M	L	Bayqoun	M	M	L	Bchetfine	M	M	VL
Beiteddine	ML	M	VL	Benouati Ech-Chouf	ML	M	VL	Berjein	M	M	VL
Bireh et Mtalleh	ML	M	L	Biret El-Chouf	M	M	L	Bkechtine Ouel Mchei	ML	M	VL
Bkifa El-Chouf	M	M	VL	Botme	L	M	L	Bqaiaa Ech-Chouf	M	M	VL
Bsaba El-Chouf	ML	M	VL	Chammis El-Chouf	M	MH	VL	Chehim	M	M	VL
Chemaarine	ML	M	VL	Chourit	L	M	VL	Daher El-Chouf	M	M	VL
Dalhoun	M	MH	VL	Damour	M	MH	L	Daraya El-Chouf	ML	M	VL
Deir El-Moukhalles	ML	M	VL	Deir Baba	ML	M	VL	Deir Dourit	ML	M	VL
Deir El-Qamar	ML	M	VL	Deir Kouche	M	M	VL	Dibbieh	M	M	VL
Dmit	M	M	VL	Fouara Jaafar	L	M	L	Fraidis El-Chouf	ML	M	VL
Ghabet Jaafar	M	M	VL	Gharife	ML	M	VL	Haret Jandal	ML	M	L
Hasrout	M	M	VL	Jadra	M	MH	L	Jahlieh	ML	M	VL
Jbeih El-Chouf	ML	M	L	Jdeidet El-Chouf	ML	M	L	Jiyeh	M	H	L
Jleilyeh	M	M	VL	Jmailiyeh	M	MH	L	Joun	M	MH	VL
Kahlounie El-Chouf	M	M	L	Ketermaya	M	MH	VL	Kfar Faqoud	ML	M	VL
Kfar Hamal	M	MH	VL	Kfar Him	M	M	VL	Kfar Katra	ML	M	VL
Kfar Niss	ML	M	VL	Kfar hay	ML	M	L	Kfarnabrakh	ML	M	L
Khirbet Bisri	L	M	VL	Knayse El-Chouf	ML	M	VL	Maaniyeh	M	MH	VL
Maasser Beiteddine	ML	M	L	Maasser El-Chouf	L	M	VL	Majdalouna	M	MH	VL
Majdel El-Meouch	ML	M	VL	Mazboud	M	MH	VL	Mazmoura	M	MH	VL
Mazraat El Chouf	ML	M	L	Mazraat El Daher	ML	M	VL	Mazraat El-Douair	L	M	VL
Mechref	M	M	VL	Mghairie	M	MH	VL	Mghayrie El-Chouf	M	M	VL
Moukhtara	ML	M	L	Mrusti	ML	M	L	Mtolle	M	MH	VL
Naameh	M	MH	VL	Niha El-Chouf	ML	M	L	Ouadi Abou Youssef	L	M	VL
Ouadi Ed-Deir	M	M	VL	Ouadi El-Sit	ML	M	L	Ouadi bnehlay	ML	M	VL
Qraibeh	ML	M	L	Qreiaa	L	M	VL	Rmayle El-Chouf	M	MH	L
Semqaniyeh	M	M	L	Sibline	M	MH	L	Sirjbeil	M	M	VL
Warhanieh	ML	M	VL	Werdaniyeh	M	MH	L	Zaarourieh	M	M	VL

## Baabda

Municipality	06-Jan	07-Jan	08-Jan	Municipality	06-Jan	07-Jan	08-Jan	Municipality	06-Jan	07-Jan	08-Jan
Abadiyeh	ML	M	L	Ain Mouaffaq	ML	M	L	Araiya	ML	M	VL
Arbaniyeh	L	M	VL	Arsoun	L	M	VL	Baabda	M	M	VL
Baalchmey	M	M	L	Bmaryam	L	M	VL	Bourj El-Brajneh	M	M	L
Boutchay	M	M	VL	Bsaba Baabda	M	M	VL	Btekhney	L	M	VL
Btibyat	L	M	VL	Bzebdine	L	M	VL	Chbeniyeh	ML	M	VL
Chiyah	M	M	L	Chmeisset Baabda	L	M	VL	Chouit	L	M	VL
Deir El-harf	L	M	VL	Deir Khouna	L	M	VL	Dlaybeh	L	M	VL

Falougha	M	M	VL	Furn El-Chebbak	M	M	VL	Hadath Beyrouth	M	M	VL
Halaliyeh Baabda	L	M	VL	Hammana	ML	M	VL	Haret El Sett	ML	M	VL
Haret Hamze	L	M	VL	Haret Hreik	M	M	L	Hasbaiya El-Metn	L	M	VL
Jouar El-Hoz	L	ML	VL	Jouret Arsoun	L	M	VL	Kfar Chima	M	M	VL
Kfar Selouane	L	M	VL	Khalouat Baabda	L	M	VL	Kneisset Baabda	L	M	VL
Laylakeh	M	M	VL	Louayzeh Baabda	M	M	VL	Merdache	M	M	VL
Mzairaa Baabda	L	M	VL	Ouadi Chahrour El Ol	M	M	VL	Ouadi Chahrour El So	ML	M	VL
Qalaa Baabda	L	M	VL	Qhraybe Baabda	L	M	VL	Qobbayaa	ML	M	VL
Qornayel	L	M	VL	Qortada	L	M	VL	Qrayeh Baabda	ML	M	VL
Qsaibeh Baabda	L	M	VL	Qtale Baabda	L	M	VL	Ras El Metn	L	M	VL
Ras El-Haref	ML	M	VL	Rouayset El-Ballout	L	M	VL	Salima Baabda	L	M	VL
Tahouitat El Ghadir	M	M	L	Tarchich	L	M	VL	Zandouqa	L	M	VL

## Aley

Municipality	06-Jan	07-Jan	08-Jan	Municipality	06-Jan	07-Jan	08-Jan	Municipality	06-Jan	07-Jan	08-Jan
Abey	M	M	VL	Aghmid	L	M	VL	Ain Dara	ML	M	VL
Ain Drafil	M	M	VL	Ain El Halazoun	M	M	L	Ain El-Rmmaneh	L	M	VL
Ain Jedideh	M	M	L	Ain Ksour	M	M	VL	Ain Onoub	M	M	VL
Ain Traz	M	M	VL	Ainab	M	M	VL	Aley	M	M	L
Aramoun	M	M	VL	Aytat	M	M	VL	Azouniyeh	ML	M	VL
Baawerta	M	M	VL	Badghan Oua Wadi Bad	ML	M	L	Bassatine	M	M	VL
Bayssour	M	M	VL	Bchamoun	M	M	VL	Bdadoun	ML	M	VL
Behouara	ML	M	L	Bennay	M	M	VL	Bhamdoun El-Dayaa	M	M	L
Bhamdoun El-Mhatta	M	M	L	Bkhechey	M	M	L	Bleibel	M	M	VL
Bmakine	M	M	VL	Bmehray	L	ML	VL	Bouzrid	ML	M	VL
Bserrine	M	M	L	Bsous	L	M	VL	Btalloun	M	M	L
Btater	M	M	L	Chanay	M	M	L	Charoun	ML	M	L
Chartoun	ML	M	VL	Chemlane	ML	M	VL	Chouifat El-Aamrous	M	M	L
Chouifat El-Oumara	M	M	L	Chouifat El-Quoubbe	M	M	L	Dakkoun	M	M	VL
Deir Qoubel	M	M	VL	Dfoun	M	M	VL	Douair El Remmaneh	L	M	VL
Ghaboun	ML	M	L	Habramoun	L	M	VL	Homs Oua Hama	ML	M	L
Houmal	M	M	VL	Jisr El Qadi	M	M	VL	Kehaleh	L	M	VL
Keyfoun	M	M	VL	Kfar Aamey	ML	M	VL	Kommatyeh	M	M	VL
Maasrati	ML	M	VL	Majdel Baana	M	M	L	Mansourieh et Ain El	M	M	L
Mazraat El-Nahr	ML	M	L	Mchakhte	L	M	VL	Mecherfeh	ML	M	L
Mejdaya	M	M	VL	Mrayjat	ML	M	VL	Ramliyah	L	M	VL
Rechmaya	M	M	L	Rejmeh	ML	M	L	Remhala	M	M	VL
Rouaysset El Neemane	ML	M	VL	Saoufar	ML	M	VL	Selfaya	M	M	VL
Sirhmoul	M	M	VL	Souq El Ghareb	M	M	VL	Taazanieh	M	M	L

## Kesrouane

Municipality	06-Jan	07-Jan	08-Jan	Municipality	06-Jan	07-Jan	08-Jan	Municipality	06-Jan	07-Jan	08-Jan
Achkout	L	M	VL	Adma Oua Dafneh	M	M	L	Ain Ed-Delbe Kesroua	L	M	VL
Ain El-Rihane	ML	M	VL	Aintoura Kesrouane	M	M	L	Ajaltoun	L	M	VL
Akaybeh Kesrouane	M	M	L	Aramoun Kesrouane	ML	M	VL	Azra ouel Ozor	ML	M	VL
Ballouneh	L	M	VL	Batha	L	M	VL	Bekaatat Achkout	L	M	L
Bekaatat Kanaan	L	M	VL	Bizhel	ML	M	VL	Bouar	M	M	L
Bqaatouta	L	M	VL	Bqaq Ed-Dine	M	M	L	Bzommar	ML	M	L



Chahtoul	ML	M	VL	Chnaniir	L	M	VL	Chouan	L	M	VL
Daraya Kesrouane	L	M	VL	Darououn	ML	M	VL	Deir Baqlouch	ML	M	VL
Dlebta	L	M	VL	Eghbeh	L	M	VL	Faraya	L	M	L
Fatka	ML	M	L	Feytroun	L	M	VL	Ghazir	ML	M	L
Ghbaleh Kesrouane	ML	M	VL	Ghedrass	L	M	VL	Ghosta	L	M	VL
Ghyneh	ML	M	L	Harharaya w Kattine	ML	M	VL	Harissa Kesrouane	M	M	VL
Hayata	L	M	VL	Hosein	L	M	VL	Hrajel	ML	M	L
Jdeideh Ghazir	ML	M	VL	Jeita	ML	M	L	Jounieh Ghadir	M	M	L
Jounieh Haret Sakhr	M	M	L	Jounieh Salel Alma	M	M	L	Jounieh Sarba	M	M	L
Jouret Bedrane	ML	M	VL	Jouret Mhad	L	M	VL	Jouret Termos	ML	M	L
Kfar Debiane	L	M	VL	Kfar Tay Kesrouane	L	M	VL	Kfar Yassine	M	M	L
Kfour Kesrouane	ML	M	L	Kharayeb Nahr Ibrahi	M	M	VL	Klayaat Kesrouane	L	M	VL
Maarab	L	M	VL	Maaysra Kesrouane	ML	M	VL	Mayrouba	ML	M	L
Mazraat Er-Ras	M	M	L	Mazraat Mrah El-Mir	L	M	VL	Mchaa El Ftouh	ML	M	VL
Mchaa Faraya	ML	M	VL	Mchaa Kfar Dibiane	L	M	VL	Mghaer	L	M	VL
Mradiyah	ML	M	VL	Nahr Ed-Dahab	L	M	VL	Nammoura Kesrouane	L	M	VL
Ouata El Jaouz	L	M	VL	Ouata Sillam	M	M	L	Raachine	L	M	VL
Rayfoun	ML	M	VL	Safra Kesrouane	M	M	L	Shayle Kesrouane	ML	M	VL
Tabarja	M	M	L	Yahchouch	L	M	VL	Zaaytreh	ML	M	VL
Zeytoun	ML	M	L	Zouk Mikael	M	M	L	Zouk Mosbeh	M	M	L

## Baalbek\_Hermel

### Baalbek

Municipality	06-Jan	07-Jan	08-Jan	Municipality	06-Jan	07-Jan	08-Jan	Municipality	06-Jan	07-Jan	08-Jan
Aadous	M	M	L	Aamchki	ML	M	L	Aarsal	M	M	L
Ain Baalbek	M	MH	L	Ain Bourday	M	M	L	Ain El-Benye	ML	M	L
Ain El-Jaouz Baalbek	ML	M	L	Ain El-Siya Chadoura	ML	M	L	Al Khodr Baalbek	M	M	L
Al Nabi Chit	M	M	L	Aynata Baalbek	ML	M	L	Baalbek	M	M	L
Bachwat	L	M	VL	Barqa	L	M	VL	Bednayel Baalbak	M	M	L
Beit Chama	M	M	L	Bijjaje	M	H	L	Bouday	L	M	L
Brital	M	M	L	Btadi	ML	M	L	Chaat	M	M	L
Chaibe	ML	M	L	Chlifa	M	M	L	Chmestar	M	M	L
Dar El-Oussa	L	M	VL	Deir El-Ahmar	M	M	L	Deir Mar Maroun Baal	M	M	L
Douris	M	M	L	Fakiha	M	MH	L	Hadath Baalbek	ML	M	L
Ham	ML	M	L	Haour Taala	M	M	L	Hizzine	M	M	L
Hlebta	M	MH	L	Hosh Barada	M	M	L	Hosh El Dahab	M	M	L
Hosh El Snid	M	M	L	Hosh El-Nabi	M	M	L	Hosh El-Rafiq	M	M	L
Hosh Tal Safiya	M	M	L	Hrebta	M	MH	L	laat	M	M	L
Jebaa	M	M	L	Jenta	M	M	L	Kfar Dabach	M	M	L
Kfar Dane	M	M	L	Khraibeh El-Hermel	M	H	L	Khreibet Baalbek	M	M	L
Kneisset Baalbek	M	M	L	Labueh	M	MH	L	Maarboun	ML	M	L
Majdaloun	M	M	L	Maqneh	M	M	L	Mazraat Beit Mcheik	M	M	L
Misraya	M	M	L	Moqraq	M	M	L	Nabha El-Damdoum	M	M	L
Nabi Chbay	M	M	L	Nabi Osman	M	MH	L	Nahleh baalbek	M	M	L
Ouadi El-Oss	M	MH	L	Qaa Baayoun	M	M	L	Qaa Jouar Maqiye	M	M	L
Qaa Ouadi El-Khanzir	M	M	L	Qah Baalbek	M	M	L	Qarha Baalbek	M	M	L

Qsarnaba	M	M	L	Ram Baalbek	ML	M	L	Ras Baalbek El Sahl	M	M	L
Ras Baalbek El-Charq	M	M	L	Riha	M	M	L	Saaide	M	M	L
Sbouba	M	H	L	Seriine El-Tahta	M	M	L	Slouqi	M	M	L
Taiba Baalbek	M	M	L	Talia	M	M	L	Taraiya	M	M	L
Temnin El Fawqa	M	M	L	Temnin El-Tahta	M	M	L	Tfail	M	M	L
Yahfoufa	M	M	L	Yammouneh	ML	M	L	Younine	M	M	L
Zboud	M	H	L								

## Hermel

Municipality	06-Jan	07-Jan	08-Jan	Municipality	06-Jan	07-Jan	08-Jan	Municipality	06-Jan	07-Jan	08-Jan
Charbine El-Hermel	L	M	L	Hermel Jbab	M	M	L	Hermel	M	M	L
Maaysra El-Hermel	M	MH	L	Michaa Mrajhine	M	M	L	Ouadi Faara	ML	M	L
Ras Baalbek - Ouadi	M	MH	L	Ras Baalbek El Gharb	ML	M	L	Zighrine	L	M	L

## Akkar

### Akkar

Municipality	06-Jan	07-Jan	08-Jan	Municipality	06-Jan	07-Jan	08-Jan	Municipality	06-Jan	07-Jan	08-Jan
Aain Tinta	M	M	ML	Aaiyat	M	M	L	Aakkar El-Aatiqa	M	ML	L
Aamar Akkar	M	M	L	Aamar El Baykat	M	M	ML	Aamayer	M	M	VL
Aamriyet Akkar	M	M	ML	Aandqet	M	M	L	Aarmeh	M	M	L
Aarqa	M	M	ML	Aawaynat	M	M	L	Aayoun Akkar	M	M	ML
Abboudiye	M	M	ML	Ain El-Zeit	M	M	ML	Ain Yaaqoub	M	M	L
Akroum	M	M	L	Aridet Cheikh Zennad	M	M	L	Baldek w Mazraat Bal	M	M	ML
Barcha	M	M	ML	Bardeh	M	M	L	Bebnine	H	M	ML
Beino	M	M	L	Beit Ayoub	M	M	L	Beit El-Haouch	MH	M	ML
Beit Mellat	M	M	ML	Beit Younes	M	ML	L	Berbara Akkar	M	M	ML
Berqayel	MH	M	ML	Bezbina	M	ML	L	Bireh Akkar	M	M	ML
Borj	M	M	L	Bqerezla	M	M	ML	Bzal	M	M	L
Chane	M	M	L	Chaqdouf	M	M	L	Charbila	M	M	ML
Cheikh Mohammad	M	M	ML	Cheikh Taba Es-Sahl	M	M	ML	Cheikh Taba	M	M	ML
Cheikh Zennad	M	M	L	Cheikhlar	M	M	L	Chir Hmairine	M	M	ML
Daghle	M	M	L	Dahr Laissine	M	M	ML	Darine	M	M	ML
Dawra	M	M	L	Dawsa w Baghdadi	M	M	ML	Dayret Nahr El-Kabir	M	M	L
Deir Dalloum	M	M	ML	Deir Jennine	M	M	ML	Denbou	M	M	L
Dibbabiyyeh	M	M	ML	Douair Aadwiyeh	M	M	ML	Fassikine	M	M	ML
Fnaydek	M	ML	L	Fraydes Akkar	M	M	L	Ghazayle	M	M	ML
Habchit	M	M	L	Hakour	M	M	ML	Halba	M	M	ML
Haouchab	M	M	ML	Hayssat	M	M	ML	Haytla	M	M	ML
Hayzouq	M	M	L	Hedd	M	M	ML	Hmaira Akkar	M	M	ML
Hmaiss Akkar	M	M	ML	Hnaider	M	M	VL	Hokr Ed-Dahri	M	M	L
Hokr Etti	M	M	ML	Hokr Jouret Srar	M	M	ML	Houaich	M	M	L
Hrar	M	M	L	Idbil	M	M	L	Ilal	M	M	ML
Janine	M	M	ML	Jdeidet El-Joumeh	M	M	ML	Jdeidet El-Kaiteh	M	M	ML
Jebrayel	M	M	ML	Kafr	M	M	L	Kafr	M	M	ML
Karm Asfour	M	M	L	Kfar Melki Akkar	M	M	L	Kfar Noun	M	M	L
Kfarharra	M	M	ML	Khalsa	M	M	L	Kharnoubet Akkar	M	M	ML

Khirbet Daoud Aakkar	M	M	ML	Khirbet El Remmane	M	M	L	Khirbet Shar	M	M	ML
Khoreybet El-Jindi	M	M	ML	Khreibet Aakkar	M	M	L	Kneisset Aakkar	M	M	L
Kneisset Hnaider	M	M	VL	Knisse	M	M	ML	Kroum El-Aarab	M	M	ML
Kwachra	M	M	ML	Kweykhat	M	M	ML	Machta Hammoud	M	M	L
Majdala	M	M	ML	Majdel Akkar	M	M	L	Mar Touma	MH	M	ML
Marlaya Melhem	M	M	L	Mashha	M	M	ML	Massoudiye	M	M	ML
Mazraat Beit Ghattas	M	M	L	Mazraat En-Nahriye	M	M	L	Mechmech	ML	M	L
Memneh	L	L	VL	Mhammara	H	M	ML	Mighraq Aakkar	M	M	L
Minyara	M	M	ML	Moqayteh	M	M	ML	Mounjez	M	M	L
Msalla	M	M	ML	Mzeihmeh	M	M	ML	Nfaiseh	M	M	L
Noura Et-Tahta	M	M	L	Ouadi El-Haour	M	M	ML	Ouadi El-Jamous	H	M	ML
Ouyoun El-Ghizlane	MH	M	ML	Qaabarine	M	M	ML	Qabaait	M	M	L
Qachlaq	M	M	ML	Qantara Aakkar	M	M	ML	Qarha Aakkar	M	M	VL
Qarqaf	MH	M	ML	Qboula	M	M	ML	Qleiaat Aakkar	M	M	L
Qloud El-Baqie	M	M	L	Qobaiyat Aakkar	M	M	L	Qobbat Chamrat	M	M	ML
Qorayat	M	ML	L	Qornet Aakkar	M	M	L	Qsair Aakkar	M	M	ML
Rahbe	M	M	L	Rihaniyet Aakkar	M	M	ML	Rmah	M	M	L
Rmoul	M	M	ML	Saadine	M	M	ML	Sadaqa	M	M	L
Saidnaya	M	M	ML	Sammouniye	M	M	ML	Sayssouq	M	M	L
Semmaqiye	M	M	L	Semmaqli	M	M	ML	Sfinet El-Dreib	M	M	ML
Sfinet El-Qaitaa	M	M	L	Sindyanet Zeidane	M	M	L	Souaisset Aakkar	M	M	ML
Srar	M	M	ML	Tal Abbas El Gharby	M	M	ML	Tal Abbas El-Chargy	M	M	ML
Tal Biret	M	M	ML	Tal Hmayra	M	M	ML	Tal Maayan Tal Kiri	M	M	L
Tal Sibel	M	M	ML	Tallet Chattaha	M	M	ML	Tikrit	M	M	L
Tleil	M	M	ML	Tshea	M	ML	L	Zawarib	M	M	ML
Zouq El Hosniyeh	M	M	L	Zouq El-Haddara	M	M	ML	Zouq El-Hbalsa	M	M	L
Zouq El-Moqachrine	MH	M	ML								

## Sud

### Sour

Municipality	06-Jan	07-Jan	08-Jan	Municipality	06-Jan	07-Jan	08-Jan	Municipality	06-Jan	07-Jan	08-Jan
Aaiyeh	M	H	L	Aalma El-Chaab	M	MH	L	Aaytit	M	H	L
Abbassiyeh Sour	M	MH	L	Abou Chech	M	H	L	Ain Abou Abdallah	M	MH	L
Ain Baal	M	H	L	Arzoun	M	H	L	Aziyeh	M	MH	L
Baflaya	M	MH	L	Barich	M	H	L	Batouliyeh	M	H	L
Bayad	M	MH	L	Bazouriyeh	M	H	L	Bediass	M	MH	L
Bestiyat	M	MH	L	Borj El Chemali	M	H	L	Borj En-Naqoura	M	H	L
Borj Rahhal	M	MH	L	Boustane	M	MH	L	Btaychiyeh	M	H	L
Chaaitiye	M	H	L	Chameh	M	H	L	Chehabiye	M	MH	L
Chehour	ML	M	L	Chihine	M	MH	L	Debaal Sour	M	H	L
Deir Amess	M	MH	L	Deir Kifa	M	MH	L	Deir Qanoun El-Ain	M	H	L
Deir Qanoun El-Naher	M	MH	L	Derdghaiya	M	H	L	Dhayra	M	MH	L
Halloussiyeh	M	MH	L	Hamoul	M	MH	L	Hanaouey	M	H	L
Henniye	M	H	L	Hmairi Sour	M	MH	L	Iskandarouna Sour	M	MH	L
Jbal El Botom	M	MH	L	Jebbin	M	MH	L	Jennata	M	MH	L
Jijim	M	MH	L	Jouaiya	M	H	L	Kneisset Sour	M	H	L



Maarake	M	H	L	Maaroub	M	MH	L	Majadel	M	MH	L
Majdalzoun	M	H	L	Mansouri Sour	M	H	L	Marnba	ML	M	L
Marouahine	M	M	L	Mazraat El-Zalloutiy	M	MH	L	Mazraat Mechref	M	H	L
Mazraat Tayr Semhat	L	M	VL	Mheilib	M	MH	L	Neffakhiyeh	M	MH	L
Niha Sour	M	H	L	Ouadi Jilo	M	H	L	Qana	M	H	L
Qolaileh Sour	M	H	L	Rechknay	M	MH	L	Rmadiyah	M	H	L
Selha Sour	M	MH	L	Siddiqine	M	H	L	Sour	M	H	L
Srifa	M	MH	L	Tayr Debbe	M	MH	L	Tayr Felsay	M	MH	L
Tayr Harfa	M	MH	L	Touayri	ML	MH	L	Toura	M	MH	L
Yanouh Sour	M	H	L	Yarine	M	MH	L	Zebqine	M	MH	L

## Saida

Municipality	06-Jan	07-Jan	08-Jan	Municipality	06-Jan	07-Jan	08-Jan	Municipality	06-Jan	07-Jan	08-Jan
Aanqoun	M	H	L	Aaqtanit	M	H	L	Aarab Ej-Jall	M	MH	VL
Aarab Tabbaya	M	MH	L	Abra Saida	M	H	L	Adloun	M	H	L
Adousiyeh	M	H	L	Ain-El-Deleb	M	MH	L	Arzai	M	MH	L
Babliyah	M	H	L	Barty	M	MH	VL	Bissariyeh	M	H	L
Bnaafoul	M	H	L	Bqosta	M	MH	L	Bramiy	M	MH	L
Daoudiyeh	M	H	L	Dareb El-Sim	M	MH	L	Erkay	M	H	L
Ghassanieh	M	H	L	Ghazieh	M	H	L	Hajjeh	M	MH	L
Haret Saida	M	H	L	Hartiyeh	M	MH	L	Hlaliye Saida	M	H	L
Insariyat	M	H	L	Jazira Saida	M	MH	L	Kafar Bit	M	MH	VL
Kaoutariyet El-Siyad	M	H	L	Kfar Chellal	M	MH	VL	Kfar Hatta Saida	M	MH	VL
Kfar Milke Saida	M	MH	VL	Khartoum	M	H	L	Khaziz	M	H	L
Khirbet Ed-Douair Sa	M	H	L	Khirbet El-Bassal	M	H	L	Khrayeb Saida	M	MH	L
Loubieh	M	H	L	Maghdouche	M	H	L	Majdelyoun	M	H	L
Matariyet El-Choumar	M	MH	L	Matayriyeh	M	H	L	Mazraat 'Mseileh	M	H	L
Mazraat 'Snaiber	M	H	L	Mazraat Aarab Soukka	M	MH	VL	Mazraat Deir Taqla	M	H	L
Mazraat El Yahoudiye	M	MH	L	Mazraat El-Housseini	M	H	L	Mazraat El-Mhaydaleh	M	MH	L
Mazraat El-Ouasta	M	MH	L	Mazraat Jamjim	M	MH	L	Mazraat Kaoutariyet	M	MH	L
Mazraat Kfar Badda	M	MH	L	Mazraat Oussamiyat	M	MH	L	Mazraat Sari	M	MH	L
Mazraat Sinai	M	H	L	Meemariyeh	M	H	L	Merouaniyeh	M	H	L
Miyeh ou Miyeh	M	MH	L	Najjariyeh	M	H	L	Qaaqiyat El-Snaouba	M	H	L
Qnarit	M	H	L	Qraiye Saida	M	H	L	Saida Ed-Dekermane	M	H	L
Saida El-Oustani	M	MH	L	Saida El-Qadimeh	M	H	L	Saida Kefraya	M	MH	L
Saksakiyeh	M	H	L	Salhie Saida	M	MH	L	Sarafand	M	H	L
Sfenta	ML	M	VL	Tafahta	M	H	L	Tanbourit	M	H	L
Tebna	M	H	L	Zaghdraiya	M	MH	L	Zeita	M	H	L
Zrariyeh	M	MH	L								

## Jezzine

Municipality	06-Jan	07-Jan	08-Jan	Municipality	06-Jan	07-Jan	08-Jan	Municipality	06-Jan	07-Jan	08-Jan
Ain El-Mir (El Estab	M	H	VL	Anane	ML	M	VL	Aramta	M	M	L
Ariya	L	M	L	Aychiyeh	ML	M	L	Azour	L	M	VL
Baba	L	M	VL	Bayssour Jezzine	M	MH	VL	Benoueteh Jezzine	ML	M	VL
Bhannine	ML	M	L	Bisri	L	M	VL	Bkassine	L	M	VL
Bouslaya	L	M	VL	Btedine El-Leqech	L	M	VL	Chbail	L	ML	VL
Choualiq Jezzine	M	MH	L	Dahr Ed-Deir	ML	MH	VL	Deir El Qattine	ML	M	VL

Demachqiyeh	M	M	L	Ghabbatiyeh	ML	M	VL	Harf Jezzine	L	M	VL
Hassaniyeh	M	MH	VL	Haytouleh	M	M	VL	Haytura	L	M	VL
Hidab	ML	M	VL	Homsiyeh	ML	M	VL	Jabal Toura	ML	M	VL
Jarmaq	M	M	L	Jensnaya	M	MH	L	Jernaya	M	MH	VL
Jezzine	ML	M	L	Karkha	M	M	VL	Kfar Falous	M	MH	VL
Kfar Houna	ML	M	VL	Kfar Jarrah	M	H	L	Lebaa	M	MH	VL
Louayzet Jezzine	ML	M	VL	Machmouche	L	M	VL	Mahmoudiyeh Jezzine	M	M	L
Maknounye Jezzine	L	M	VL	Maraat Ouzaïyeh	ML	M	L	Mazraat Daraya	L	M	VL
Mazraat El-Aarqoub	L	M	L	Mazraat El-Mathane	L	M	VL	Mazraat El-Rahbane	L	M	VL
Mazraat Khallet Khaz	ML	M	L	Mazraat Louzid (Loua	L	M	VL	Mazraat Qrouh	ML	M	L
Mazraat Tamra	M	M	L	Mazraat Zighrine Jez	ML	M	L	Mazraat	L	M	VL
Mharbiyeh	M	MH	L	Midane Jezzine	ML	M	VL	Mjeydel Jezzine	M	MH	L
Mlikh	ML	M	VL	Mrah El-Hbasse	M	MH	VL	Ouadi Baanqoudaine	M	MH	L
Ouadi El-Laymoun	M	MH	VL	Ouardiyeh	VL	ML	VL	Qabaa Jezzine	L	M	VL
Qatrani	ML	M	L	Qaytouleh	ML	M	VL	Qtaleh Jezzine	ML	M	VL
Rihane Jezzine	ML	M	L	Rimat	ML	M	VL	Roum	ML	M	VL
Roummanet	M	M	VL	Sabbah	L	M	VL	Saydoun	L	M	VL
Sfaray	ML	M	VL	Snaya	L	M	VL	Sojoud	ML	M	L
Srayri	ML	M	L	Taaïd	ML	M	VL	Wadi Jezzine	ML	M	VL
Zhalta	L	M	VL								

## Bekaa

### West Bekaa

Municipality	06-Jan	07-Jan	08-Jan	Municipality	06-Jan	07-Jan	08-Jan	Municipality	06-Jan	07-Jan	08-Jan
Aammiq BG	ML	M	L	Ain El Tineh BG	ML	M	VL	Ain Zebdeh	L	M	VL
Ana	L	M	L	Aytanit	L	M	VL	Baaloul BG	L	M	L
Bab Mareh	ML	M	L	Chouberqiye Aammiq	ML	M	L	Dakoue	ML	M	L
Deir Ain El-Jaouze	L	M	VL	Deir Tahniche	ML	M	L	Ghaza	ML	M	L
Harime El-Soughra	ML	M	L	Hoch Harimeh	ML	M	L	Jazira BG	ML	M	L
Jib Jennine	ML	M	L	Kamed-El-Laouz	ML	M	L	Kefraya BG	L	M	L
Khiara El Atika	ML	M	L	Khiara	ML	M	L	Khirbet Qanafar	L	M	L
Lala	L	M	L	Lebbaya BG	ML	M	L	Loussa	M	M	L
Machghara	ML	M	L	Manara (Hammara) BG	L	M	L	Mansoura BG	ML	M	L
Marej BG	ML	M	L	Maydoun	ML	M	L	Ouaqf BG	ML	M	L
Qaraaoun	ML	M	L	Qelya	M	M	L	Raouda (Istabel)	ML	M	L
Saghbine	L	M	VL	Sohmor	ML	M	L	Soltan Yacoub el Ara	ML	M	L
Souairy	ML	M	L	Sultan Yaacoub	ML	M	L	Tal Znoun	ML	M	L
Yehmor BG	ML	M	L	Zilaya	ML	M	L				

### Zahle

Municipality	06-Jan	07-Jan	08-Jan	Municipality	06-Jan	07-Jan	08-Jan	Municipality	06-Jan	07-Jan	08-Jan
Aanjar (Haouch Mouss)	ML	M	L	Ablah	M	M	L	Ain Kfarzabad	ML	M	L
Ali-El-Nahri	M	M	L	Bar Elias	ML	M	L	Bouarej	ML	M	L
Cheberqiyet Tabet	ML	M	L	Chtaura	ML	M	L	Deir El Ghazal	ML	M	L
Delhamiyet Zahle	ML	M	L	Ferzol	ML	M	L	Haouch El-Ghanam	M	M	L
Haouch Es-Siyadeh	ML	M	L	Haouch Hala	M	M	L	Haouch Mandara	ML	M	L

Haouch Qayssar	ML	M	L	Hezerta	ML	M	L	Hosh Moussa	ML	M	L
Jdita	ML	M	L	Kfarzabad	ML	M	L	Ksara	L	M	L
Majdel Aanjar	ML	M	L	Makssi	ML	M	L	Massa	M	M	L
Mazraat Er-Remtaniye	ML	M	L	Mrayjat Zahle	M	M	L	Mzaraa Zahle	ML	M	L
Nabi Ayla	ML	M	L	Nasriyet Rizk	M	M	L	Nasriyet Zahle	ML	M	L
Niha Zahle	M	M	L	Ouadi Ed-Deloum	M	M	L	Ouadi El-Arayech	ML	M	L
Qaa El Rim	M	M	L	Qab Elias	ML	M	L	Qousaya	ML	M	L
Rhit	M	M	L	Riyak	M	M	L	Saadnayel	L	M	L
Taal El-Akhdar	ML	M	L	Taalbeya	ML	M	L	Taanayel	L	M	L
Talamara	M	M	L	Tcheflik Edde Haouch	M	M	L	Tcheflik Qiqano	ML	M	L
Terbol Zahle	ML	M	L	Touaite Zahle	ML	M	L	Zahle Aradi	ML	M	L
Zahle El-Berbara	ML	M	L	Zahle El-Maallaqa	ML	M	L	Zahle El-Midane	ML	M	L
Zahle Er-Rassiye	ML	M	L	Zahle Haouch El-Ouma	L	M	L	Zahle Haouch El-Ouma	L	M	L
Zahle Haouch Ez-Zara	ML	M	L	Zahle Maalaga Aradi	L	M	L	Zahle Mar Antonios	ML	M	L
Zahle Mar Elias	ML	M	L	Zahle Mar Gerios	ML	M	L	Zahle Saydet En-Naja	ML	M	L
Zebdoul	L	M	L								

## Rachaiya

Municipality	06-Jan	07-Jan	08-Jan	Municipality	06-Jan	07-Jan	08-Jan	Municipality	06-Jan	07-Jan	08-Jan
Ain Arab Rachaiya	ML	M	L	Ain Ata	ML	M	L	Ain Harche	ML	M	L
Aqabe Rachaya	ML	M	L	Ayha	M	M	L	Ayta El Fokhar	ML	M	L
Bakifa Rachaya	ML	M	L	Bakka	ML	M	L	Beit Lahya	ML	M	L
Bireh Rachaiya	ML	M	L	Daheer El Ahmar	ML	M	L	Deir El-Achayer	M	M	L
Heloua Rachaiya	ML	M	L	Hoch El Qannabeh Rac	L	M	L	Kaoukaba Bou Arab	L	M	L
Kfar Danis	ML	M	L	Kfar Mechki	ML	M	L	Kfar Qouq	ML	M	L
Kherbet Rouha	L	M	L	Majdel Balhiss	ML	M	L	Mdoukha	ML	M	L
Mhaydseh Rachaiya	ML	M	L	Nabi Safa	ML	M	L	Rachaiya	ML	M	L
Rafid Rachaiya	ML	M	L	Selsata (Mazraat Dei	L	ML	VL	Tannoura	ML	M	L
Yanta	ML	M	L								

## Beyrouth

### Beyrouth

Municipality	06-Jan	07-Jan	08-Jan	Municipality	06-Jan	07-Jan	08-Jan	Municipality	06-Jan	07-Jan	08-Jan
Achrafieh	M	M	L	Ain el-Mreisse	M	M	L	Bachoura	M	M	L
Beirut Central Distr	M	M	L	Marfai	M	M	L	Mazraa	M	M	L
Medaouar	M	M	L	Minet el-Hosn	M	M	L	Mwssaitbeh	M	M	L
Ras Beirut	M	M	L	Rmeil	M	M	L	Saifi	M	M	L
Zqaq el-Blat	M	M	L								





## نشرة الطقس الصادرة عن مصلحة الأرصاد الجوية بالمديرية العامة للطيران المدني

**النشرة: الصباحية**

**الأربعاء: 6 كانون الثاني 2016**

**الحالة العامة:** طقس مستقر على الحوض الشرقي للمتوسط حتى مساء الخميس حيث يتأثر تدريجياً بمنخفض جوي يجلب معه أمطار غزيرة وعواصف رعدية ورياح ناشطة.

**الأربعاء:** غائم مع ارتفاع تدريجي بدرجات الحرارة خاصة على الجبال وفي الداخل، يتحول بعد الظهر الى غائم جزئياً.

**الخميس:** غائم جزئياً نهاراً مع ارتفاع اضافي بدرجات الحرارة التي تعود لتتخفض مساءً مع أمطار غزيرة أحياناً وعواصف رعدية متفرقة ورياح شديدة تقارب الـ 70 كم/س يرتفع معها موج البحر.

**الجمعة:** غائم مع أمطار غزيرة مترافقة بعواصف رعدية متفرقة ورياح شديدة تقارب الـ 70 كم/س مع انخفاض بدرجات الحرارة. تتساقط الثلوج على ارتفاع 1600 م وما فوق

الجمعة		الخميس		الأربعاء		درجات الحرارة المتوقعة	
20/13	20/13	22/16	22/16	21/14	21/14	صور	على الساحل
19/15		21/17		20/16		بيروت	
18/13		20/16		19/16		طرابلس	
11/6	11/5	15/10	15/9	12/8	12/8	بيصور	فوق الجبال
10/5		14/9		11/8		قرطبا	
-/-		-/-		-/-		فقرا	
3/0		7/3		5/2		الارز	
11/6	11/5	15/9	15/9	13/8	13/8	القرعون	في الداخل
10/5		13/10		12/9		الهامل	
9/6		13/9		11/8		زحلة	

الرياح السطحية: جنوبية الى جنوبية غربية، سرعتها بين 10 و 35 كلم/س.

الإنقشاع: متوسط الى جيد.

الرطوبة النسبية على الساحل: بين 55 و 75 %.

حال البحر: معتدل.

حرارة سطح الماء: 19 °م.

الضغط الجوي: 1021 hPa.

أي ما يعادل: 766 ملم زئبق

ساعة شروق الشمس: 06:43

ساعة غروب الشمس: 16:43

كمية الأمطار المسجلة حتى الساعة السادسة صباحاً (ت.ع)				
المحطات	خلال 24 ساعة	المجموع حتى اليوم	المعدل العام	السنة الماضية
بيروت - المطار	11 ملم	246.2 ملم	362 ملم	446.4 ملم
طرابلس	10 ملم	523.8 ملم	370 ملم	461.8 ملم
زحلة	10.8 ملم	174.2	243 ملم	288.7 ملم